

# **CITIZEN Mac OSX CUPS Driver Guide**

Ver. 1.00 Issued on August 12, 2011

**CITIZEN SYSTEMS JAPAN CO.,LTD.**

6-1-12 Tanashi-cho, Nishi-Tokyo-shi, Tokyo 188-8511 JAPAN

Tel 81-424-68-4631

Fax 81-424-68-4740

sales-op@systems.citizen.co.jp

<http://www.citizen-systems.co.jp/>

#### Caution

- (1) You are hereby notified that any dissemination, distribution or copying of this document without written consent is strictly prohibited.
- (2) The contents of this document are subject to change without prior notice.
- (3) We tried to ensure the content of this document but if you find any mistakes, please let us know.
- (4) Regardless of article (3), we cannot be responsible for any damages/influences caused by the use of this driver.
- (5) If you do not agree any of above, you are not allowed to use the driver.

#### Trade marks

Apple, Macintosh, OSX and CUPS are the trademarks or Apple Inc.

## **Introduction**

CUPS (Common Unix Printing System) is a standard printing systems of Mac OSX.  
The installation/setting can be done in the same way as other printers.

The target of this document is the environment that OS is installed correctly and printing systems works correctly.

The explanation of this document are tested in the environment of  
Mac OSX 10.6.8 (CUPS 1.4.7)  
Printer CT-S601 (USB) / CT-S281L (USB)

If there is environmental difference from above, it is necessary to read this document taking the difference into the consideration.

Supported OS by the driver are  
Mac OSX 10.4.11 [PPC/Intel]  
Mac OSX 10.5.8 [PPC/Intel]  
Mac OSX 10.6.8 [Intel]  
Mac OSX 10.7.0 [Intel]

# 1. Steps of CUPS driver installation

Driver installation takes following 2 steps.

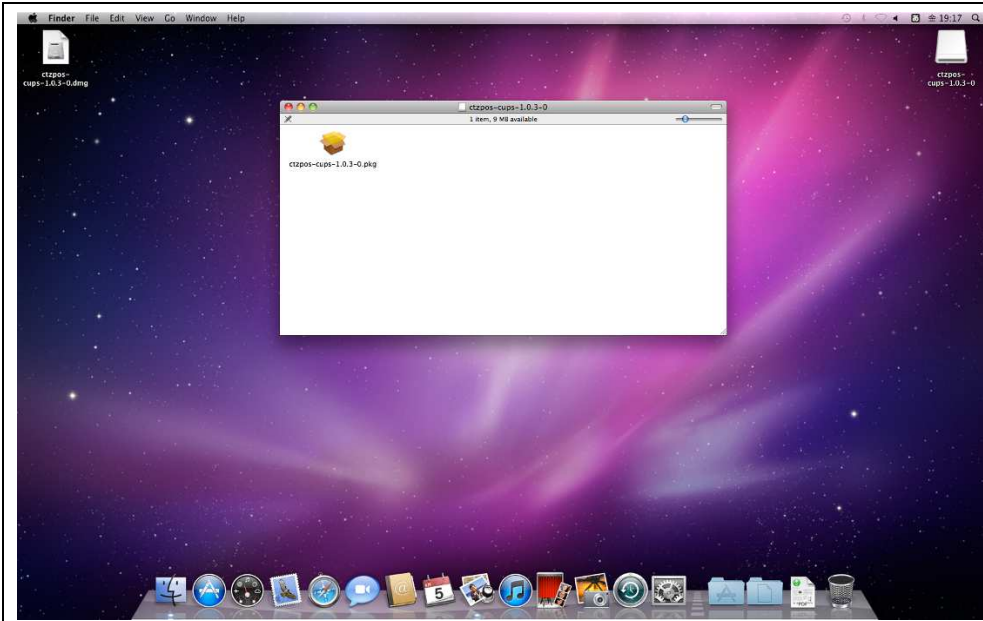
Step1: Installation of driver files by the installer (Explanation in section2)

Step2: Adding printer to CUPS (Explanation in section3)

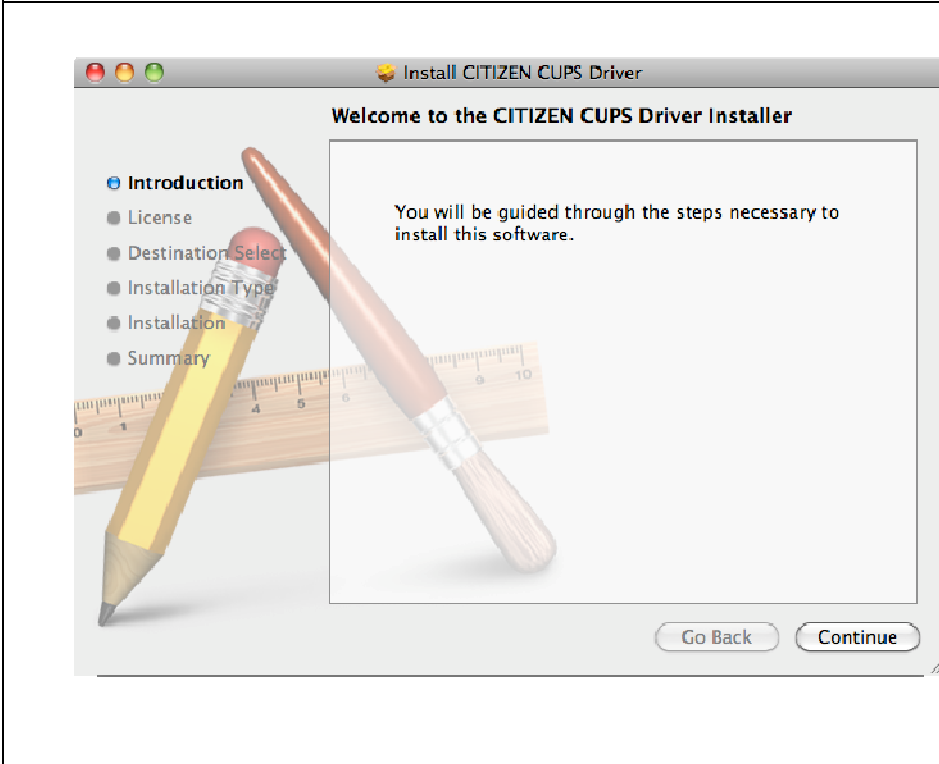
# 2. Printer driver file installation

By this installation job, files (PPD=definition file and filter file) in the package are copied.

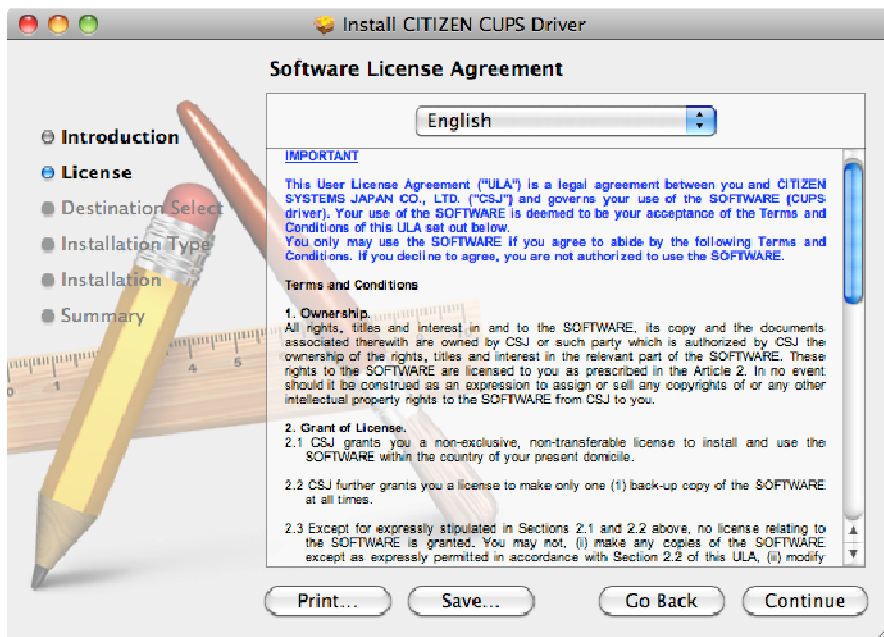
## 2.1 Steps of the installation



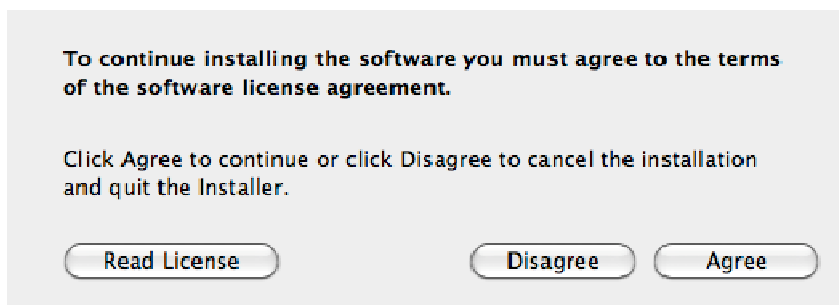
Double-click the disk image file (.dmg) to mount disk image. Then double-click the package file. It is not mandatory to put the file on the desktop like the picture.



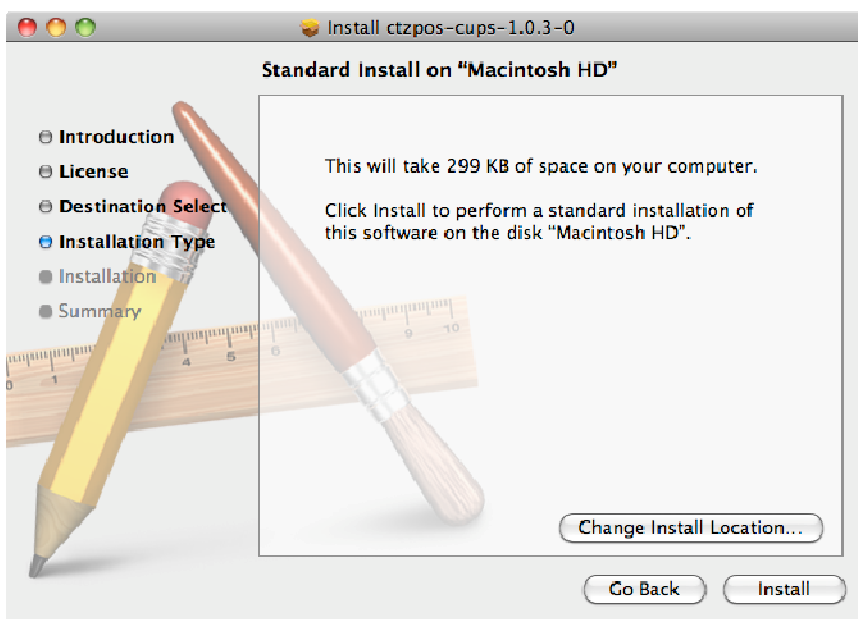
When the message like left picture comes up, press "Continue" button.



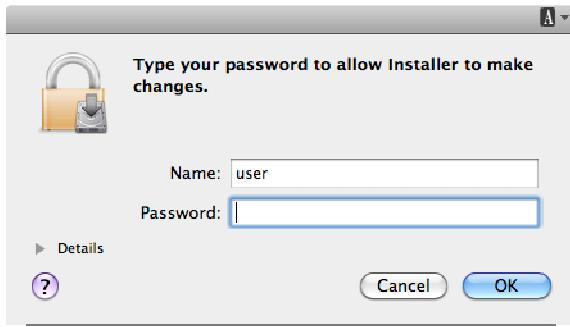
When the message like left picture comes up, press "Continue" button.



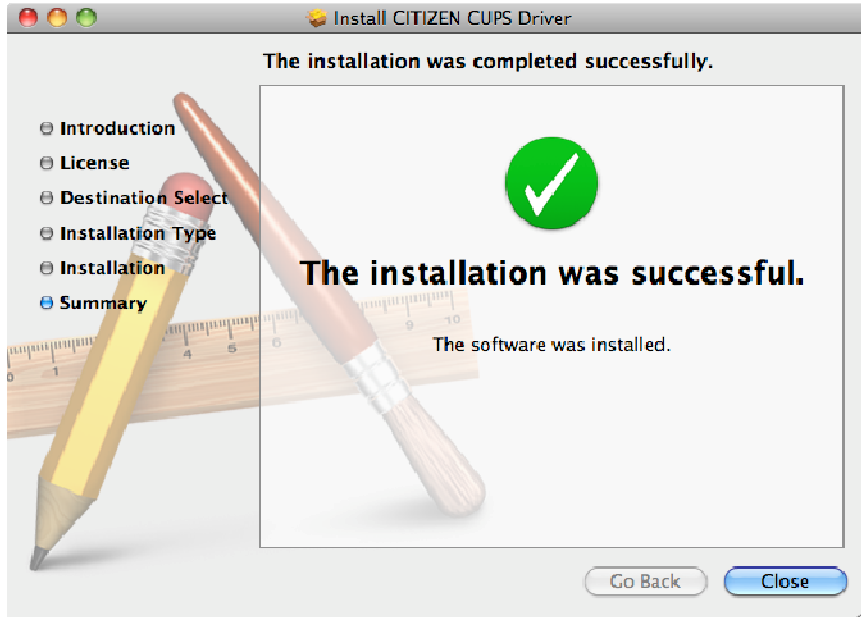
If you agree with the software license agreement, press "Agree" button.



When the message like left picture comes up, press "Install" button. Printer driver files are installed to boot volume.



Please enter the password. If you log-in as the user without administrator privileges, enter the name and password for administrator.

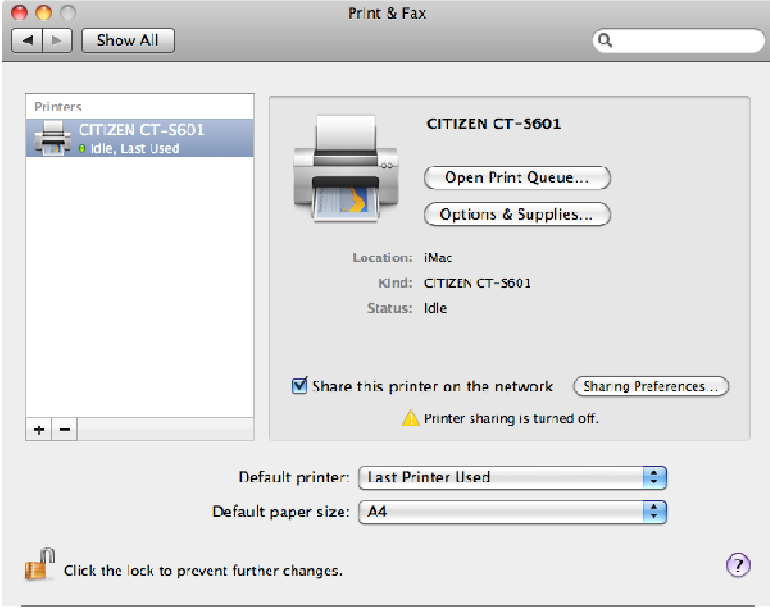


When installation is finished successfully, you can see the screen like this. Press "Close" button to finish installation.

### 3. Adding printer to CUPS

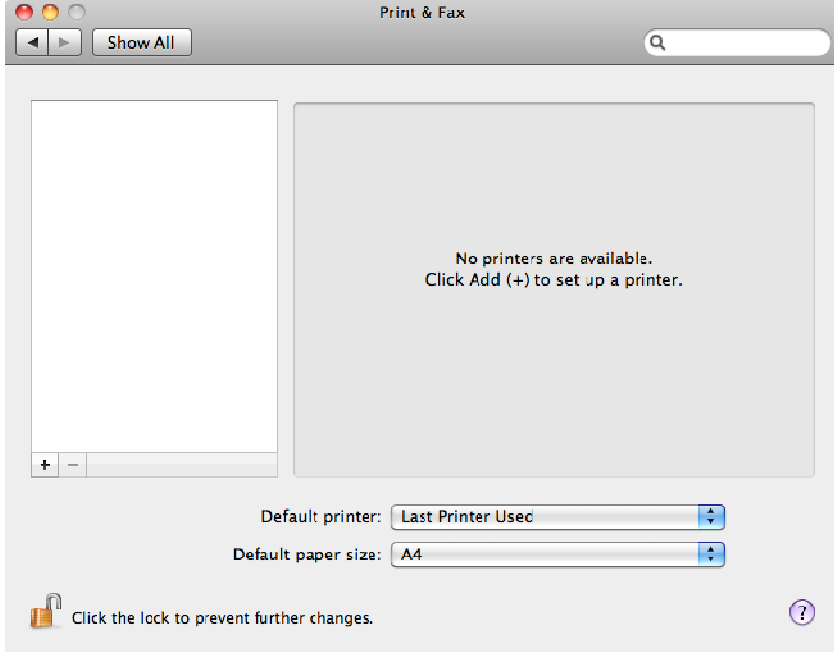
#### 3.1 Automatic installation

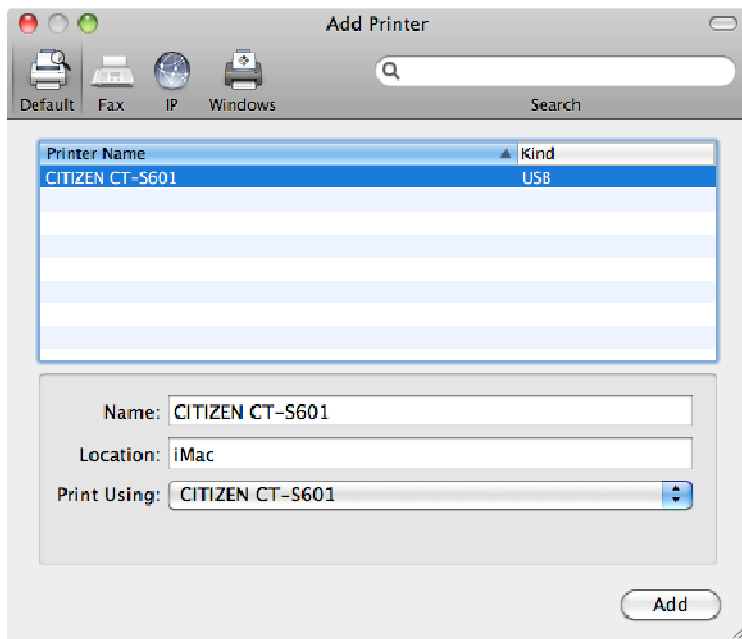
After the driver file installation is done, if the plug & Play function is effective for USB interface, printer driver is automatically added to CUPS by connecting USB interface printer.

	<p>Go to [System Preferences] -&gt; [Print &amp; Fax] to see "Print &amp; Fax" screen. You can see that the printer is added.</p>
---	---

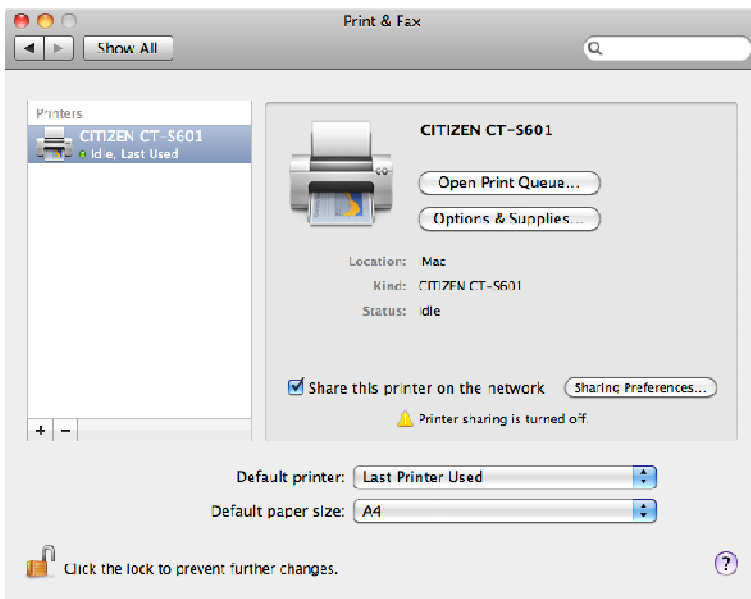
#### 3.2 Manual installation

This is the example to connect CT-S601 via USB interface.

	<p>Go to [System Preferences] -&gt; [Print &amp; Fax] to see "Print &amp; Fax" screen. Press "+" button at left.</p>
---	--



You can see the name of connected printer on the list.  
Choose the printer name to install and press "Add" button.

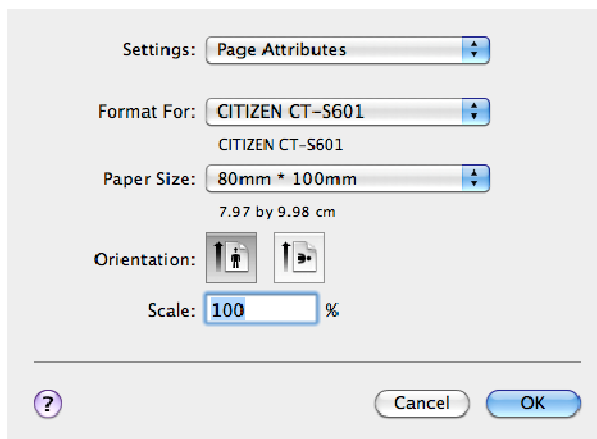


On "Print & Fax" screen, you can see that the printer is added.

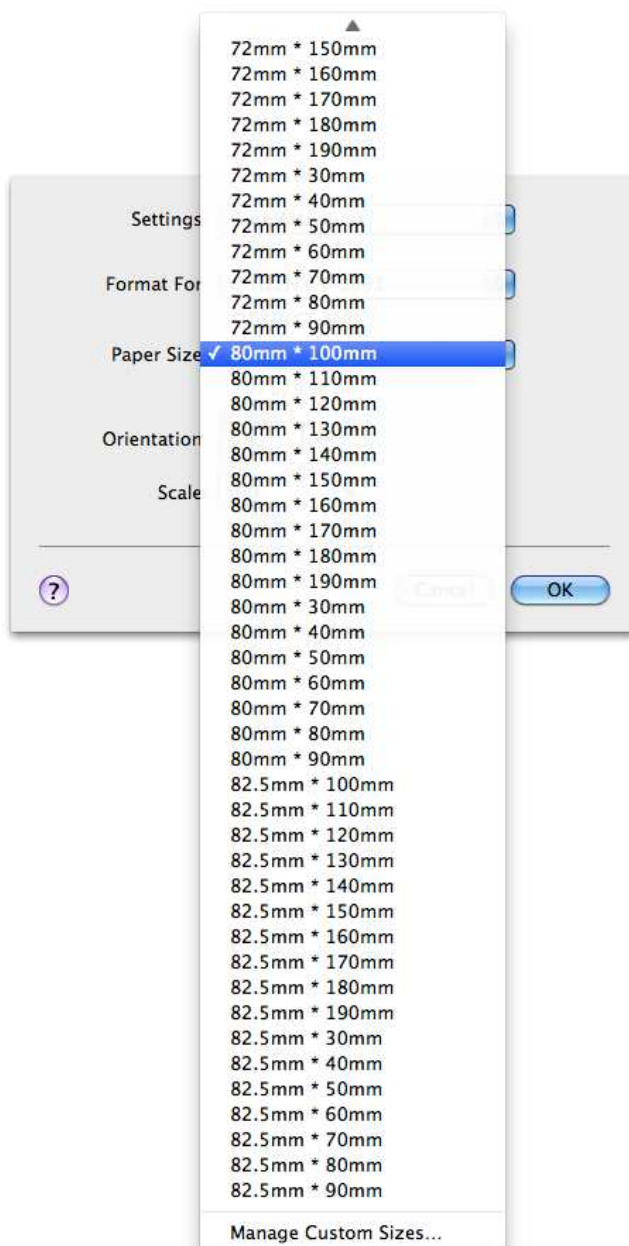
## 4. Driver function and settings

### 4.1 Paper size setting

This is the example of "TextEdit" which is standard application of the OS.



From application men, go to File] -> [Page Setup...]. Then Page Setup dialog shows up. Choose the printer to print on "Format For" menu.



Choose the combination of maximum print area width and print area length. Length is fixed length. Even if there is no data print, printer feed paper without any printing.

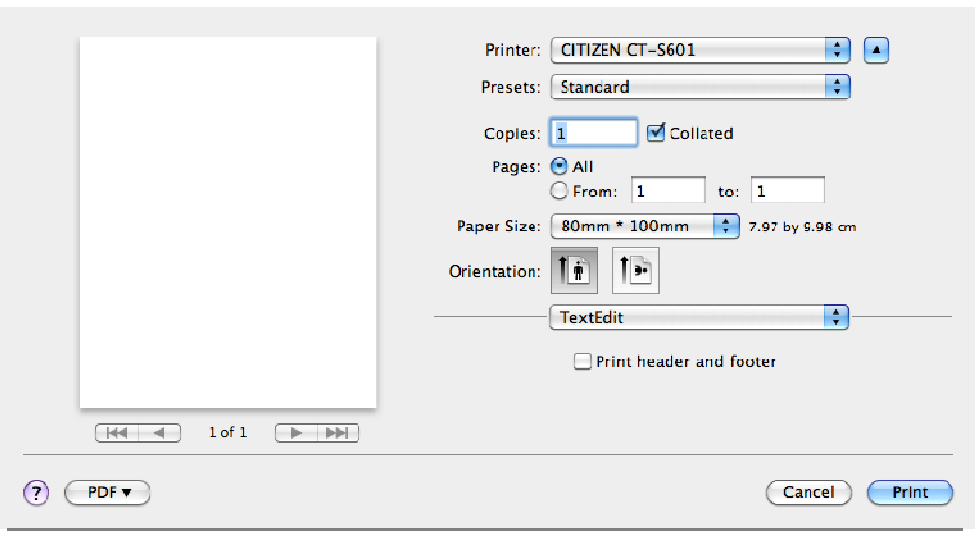
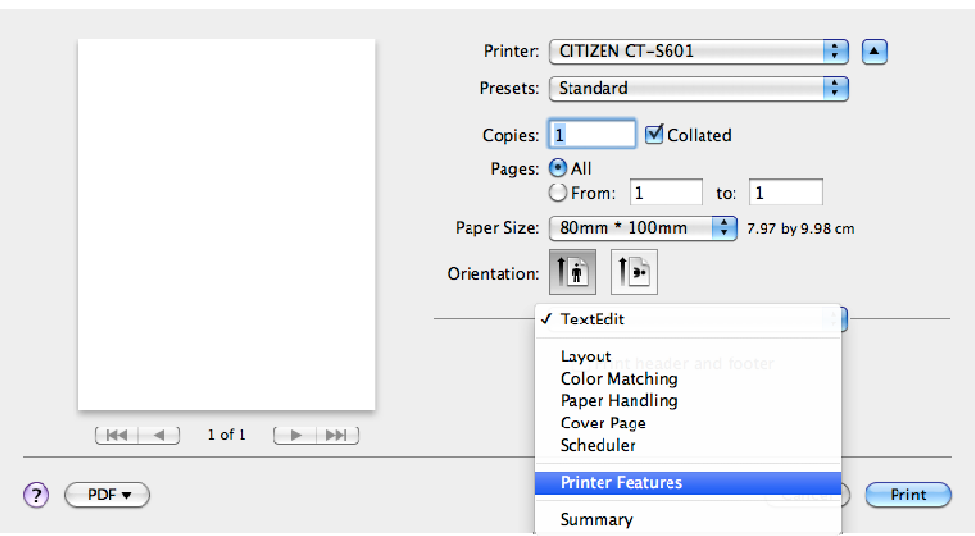
## 4.2 Setting the printer function

This section explains about "Drawer Options" and "Cut Options" which is the unique function of our printer. (Depending on the model, those options are not available or not effective.)

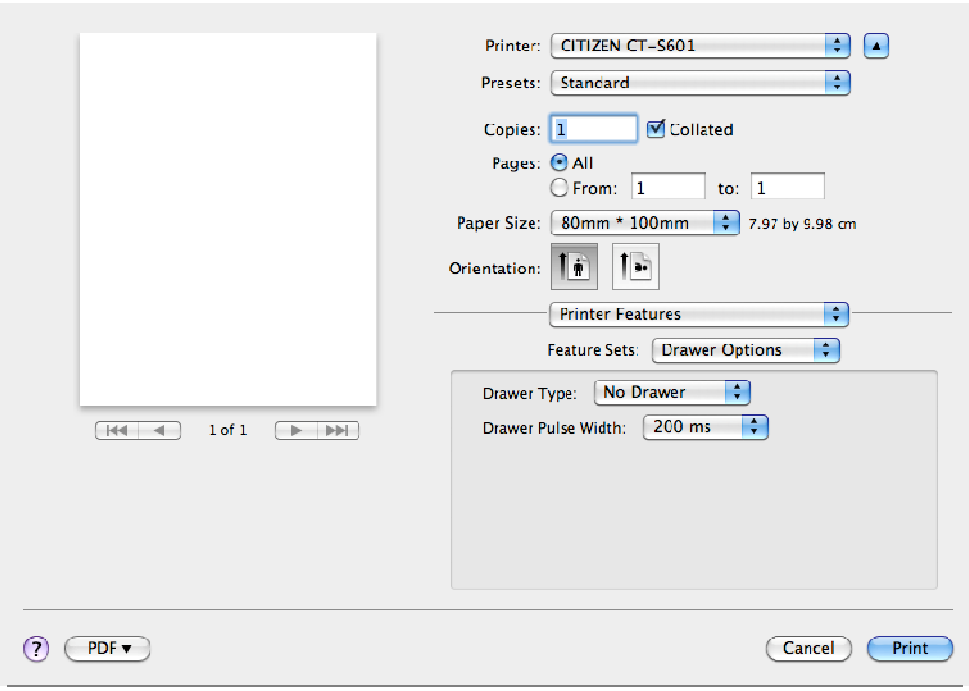
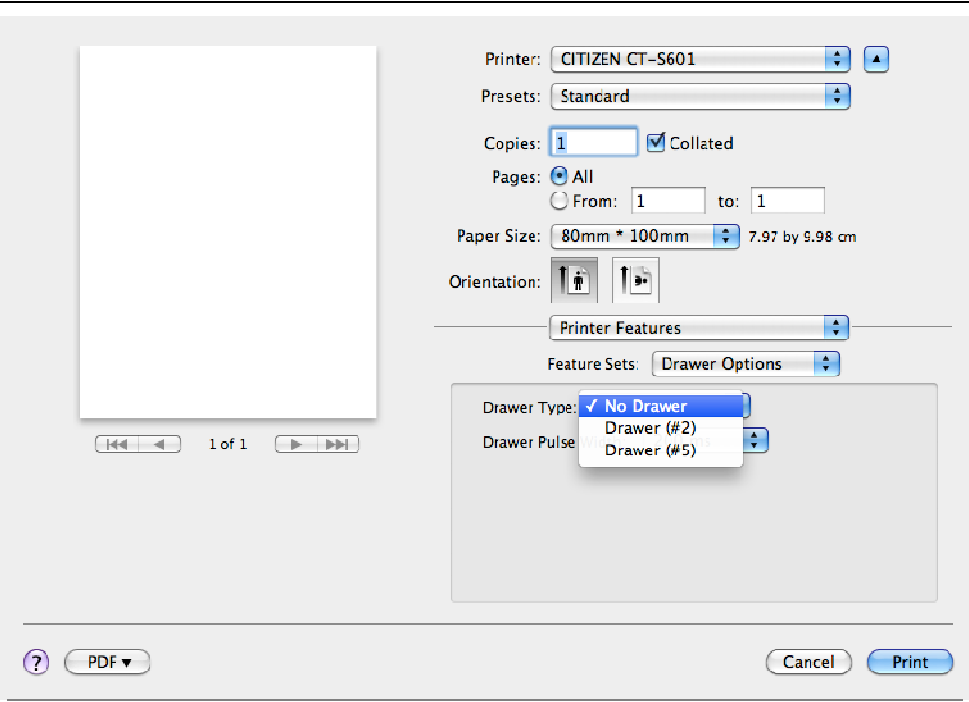
This explanation is based on the standard application "TextEdit".

### 4.2.1 Display "Printer Features"

From the application menu, choose [File] -> [Print...] to open print dialog.

	<p>On "Printer" menu, choose the printer to print.</p> <p>The screen is different depending on the application.</p>
	<p>Choose "Printer Features" in the menu like the left picture.</p>

## 4.2.2 Drawer Options

 <p>Printer: CITIZEN CT-S601 Presets: Standard Copies: 1 <input checked="" type="checkbox"/> Collated Pages: <input checked="" type="radio"/> All Paper Size: 80mm * 100mm 7.97 by 9.98 cm Orientation:  </p> <p>Printer Features Feature Sets: Drawer Options</p> <p>Drawer Type: No Drawer Drawer Pulse Width: 200 ms</p> <p>PDF Cancel Print</p>	<p>In "Printer Features" menu, choose "Drawer Options". "Drawer Options" is to set cash drawer type and pulse length to send to the cash drawer.</p>
 <p>Printer: CITIZEN CT-S601 Presets: Standard Copies: 1 <input checked="" type="checkbox"/> Collated Pages: <input checked="" type="radio"/> All Paper Size: 80mm * 100mm 7.97 by 9.98 cm Orientation:  </p> <p>Printer Features Feature Sets: Drawer Options</p> <p>Drawer Type: <input checked="" type="checkbox"/> No Drawer Drawer Pulse Width: 200 ms</p> <p>PDF Cancel Print</p>	<p>Choose Drawer (#2) for cash drawer 1 and choose Drawer (#5) for cash drawer 2.</p>

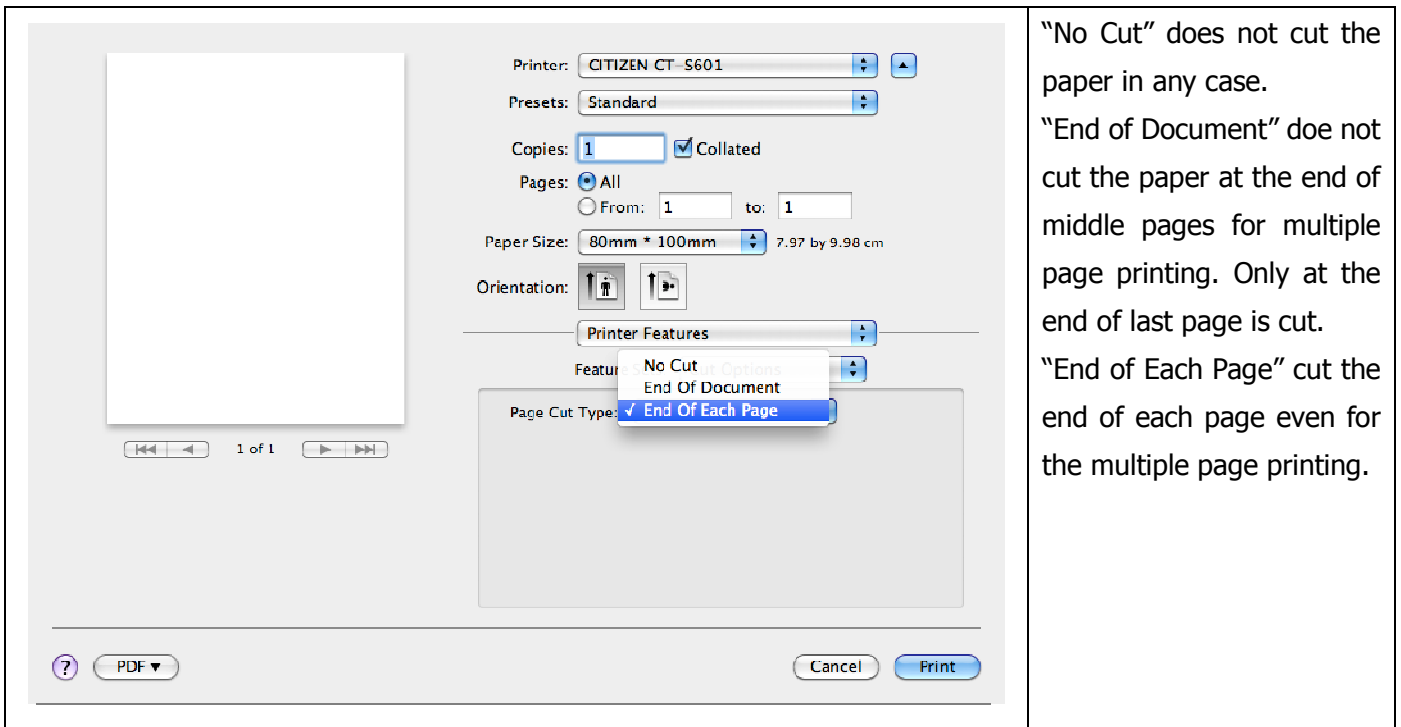
The screenshot shows a printer control panel for a CITIZEN CT-S601. The interface includes a printer icon, a page preview, and various settings. The 'Printer Features' menu is open, showing a list of pulse width options: 50 ms, 100 ms, 150 ms, 200 ms (selected), 250 ms, 300 ms, 350 ms, 400 ms, 450 ms, and 500 ms. Other settings include: Printer: CITIZEN CT-S601, Presets: Standard, Copies: 1 (checked), Collated: checked, Pages: All, Paper Size: 80mm \* 100mm (7.97 by 9.98 cm), and Orientation: Portrait. At the bottom, there are buttons for PDF, Cancel, and Print.

Usually, it is not necessary to adjust the pulse to send to cash drawer but when necessary, change the value.

### 4.2.3 Cut Options

The screenshot shows the same printer control panel as above, but with the 'Printer Features' menu set to 'Cut Options'. The 'Page Cut Type' is set to 'End Of Each Page'. The 'Drawer Pulse Width' menu is no longer visible. Other settings remain the same: Printer: CITIZEN CT-S601, Presets: Standard, Copies: 1 (checked), Collated: checked, Pages: All, Paper Size: 80mm \* 100mm (7.97 by 9.98 cm), and Orientation: Portrait. At the bottom, there are buttons for PDF, Cancel, and Print.

In "Printer Features" menu, choose "Cut Options". Cut option is to set cutting enabled/disable at the end of printing or to set cutting enabled/disabled at the end of middle pages for multiple page printing.



“No Cut” does not cut the paper in any case.  
 “End of Document” does not cut the paper at the end of middle pages for multiple page printing. Only at the end of last page is cut.  
 “End of Each Page” cut the end of each page even for the multiple page printing.

## 5. CUPS driver uninstallation

### 5.1 Deleting printer from CUPS

Refer to “Print & Fax” screen in section 3.2. Choose the printer to delete and press “-” button in the left.

### 5.2 Uninstallation of driver files by command line.

Installer installs the files in the addendum 1 in the next page.

If you want to delete the files, run “Terminal” and delete filter files and PPD files by “rm” command. Deleting file requires administration privileges. So use “sudo” command like “sudo rm [file]”

Also package information added by the installation can be deleted as follows.

Command to delete package information

[After OSX10.6]

```
sudo pkgutil --forget jp.co.citizen-systems.cupsdriver.pkg
```

[OSX10.4, 10.5]

```
sudo rm -r /Library/Receipts/ctzpos-cups-1.0.3-0.pkg
```

## Addendum1. Installed file list

### Filter files

Library	Printers	CITIZEN	Filter	rastertocbm1k
				rastertocds500
				rastertocts2kl

### PPD files

After OSX10.5					
Library	Printers	PPDs	Contents	Resources	
					CBM1000.ppd.gz
					CDS500.ppd.gz
					CTP29X.ppd.gz
					CTS2000.ppd.gz
					CTS280.ppd.gz
					CTS281.ppd.gz
					CTS281label.ppd.gz
					CTS2Klabel.ppd.gz
					CTS300.ppd.gz
					CTS310.ppd.gz
					CTS310II.ppd.gz
					CTS4000.ppd.gz
					CTS401.ppd.gz
					CTS601.ppd.gz
					CTS601label.ppd.gz
					CTS651.ppd.gz
					CTS651label.ppd.gz
					CTS801.ppd.gz
					CTS801label.ppd.gz
					CTS851.ppd.gz
					CTS851label.ppd.gz
					PPU700.ppd.gz
OSX10.4					
Library	Printers	PPDs	Contents	Resources	en.lproj
					CBM1000.ppd.gz
					CDS500.ppd.gz
					CTP29X.ppd.gz
					CTS2000.ppd.gz
					CTS280.ppd.gz
					CTS281.ppd.gz
					CTS281label.ppd.gz
					CTS2Klabel.ppd.gz
					CTS300.ppd.gz
					CTS310.ppd.gz
					CTS310II.ppd.gz
					CTS4000.ppd.gz
					CTS401.ppd.gz
					CTS601.ppd.gz
					CTS601label.ppd.gz
					CTS651.ppd.gz
					CTS651label.ppd.gz
					CTS801.ppd.gz
					CTS801label.ppd.gz
					CTS851.ppd.gz
					CTS851label.ppd.gz
					PPU700.ppd.gz