

CBM OPOS Driver Setup Guide

November 26, 2004 Rev. 2.3

Japan CBM Corporation

5-68-10 Nakano, Nakano-Ku, Tokyo 169-0001 JAPAN

Tel 81-3-5345-7540

Fax 81-3-5345-7541

info-sys@jcbm.co.jp

<http://www.jcbm.co.jp/eng/printer/>

1. INSTALLATION	2
2. INSTALLATION CONFIGURATION.....	6
3. UNINSTALLATION.....	7
4. PRINTER SETTING TOOL.....	8
5. ADDING A NEW PRINTER	9
6. ADDING NEW DRAWER	14
7. ADDING LOGICAL DEVICE.....	15
8. DELETING DEVICE	15
9. SETTING PRINTER	16
10. FIRMWARE VERSION OF PRINTER.....	18

1. INSTALLATION

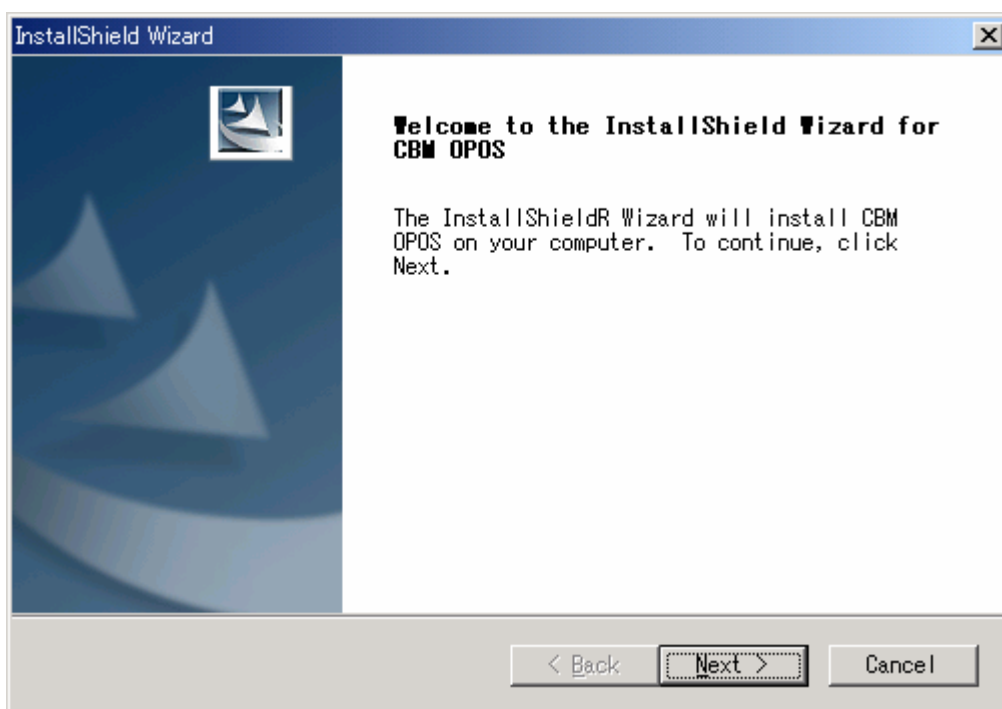
The following explains the installation procedure required for using this product.

Description is made by taking the installation procedure of CBM1000 as an example. This procedure applies to other CBM POS printers.

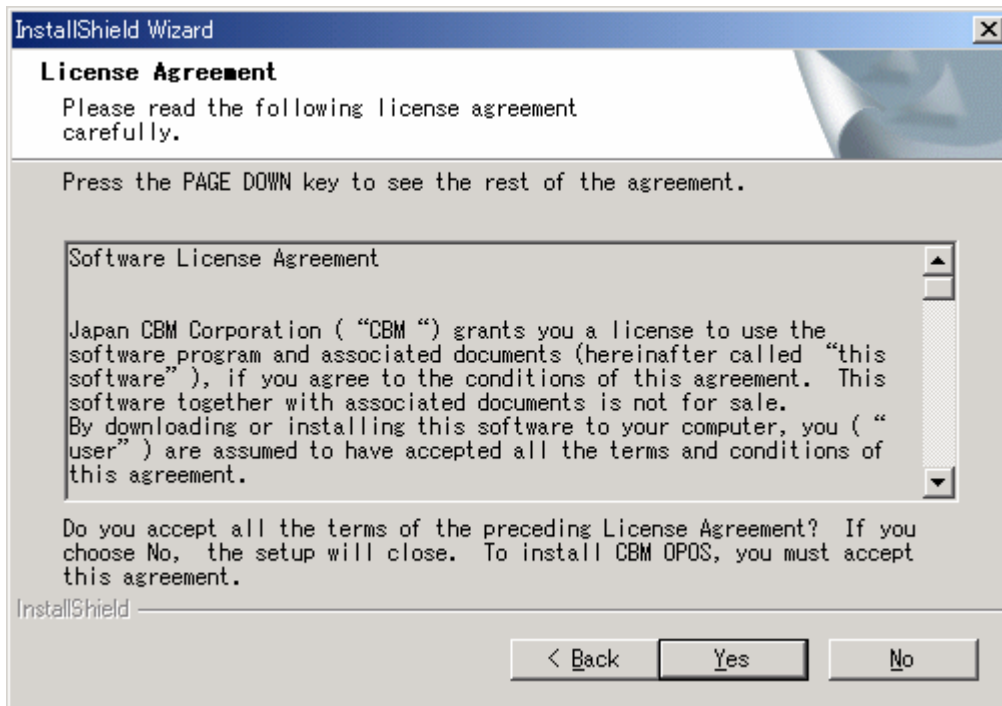
Note: For the printer DIP switch, refer to the description in "Setting Printer".

1. Before installation, be sure to close all other open applications.
2. Run Setup.exe on Setup Disk 1 supplied with the printer.

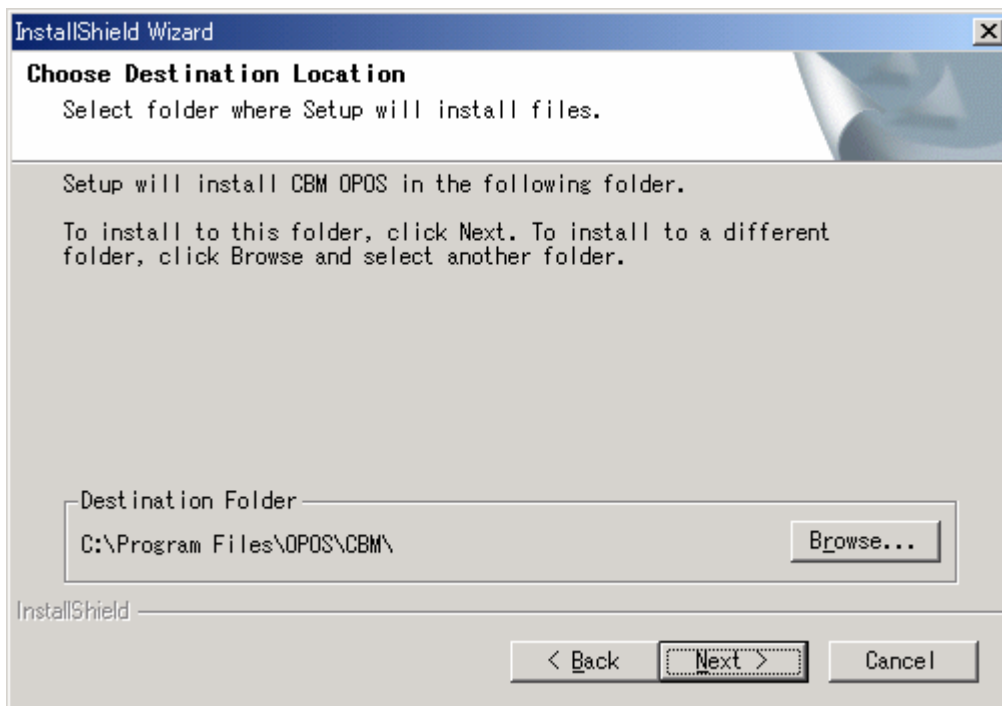
When the Setup.exe program is launched, the following message window appears.



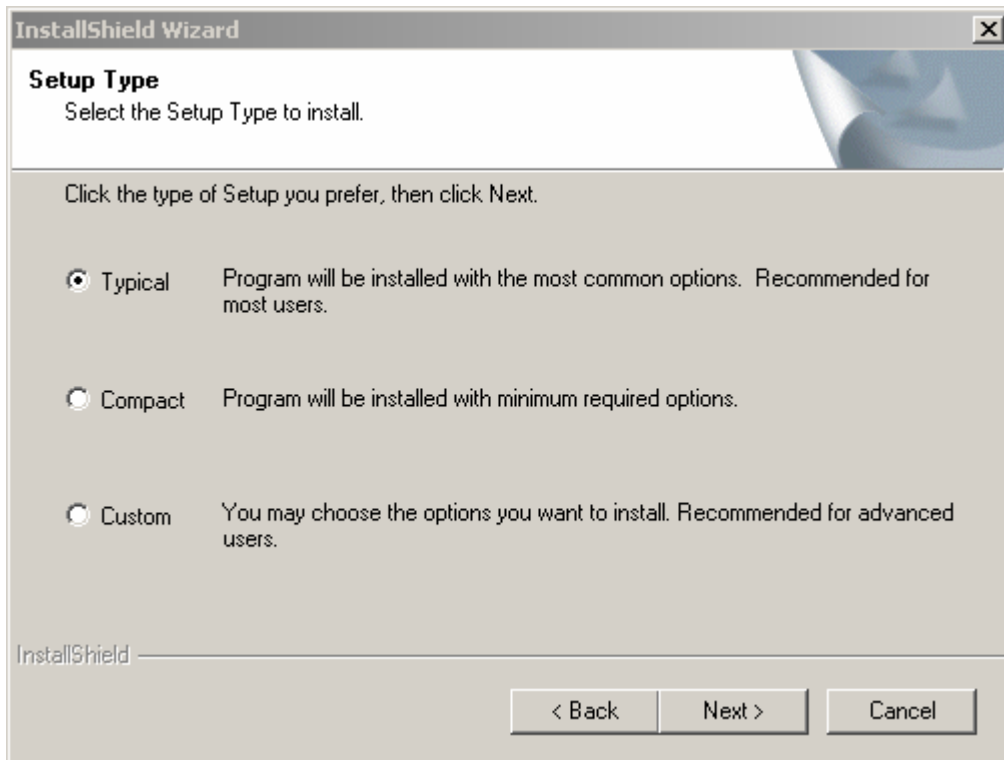
Click the [Next] button.



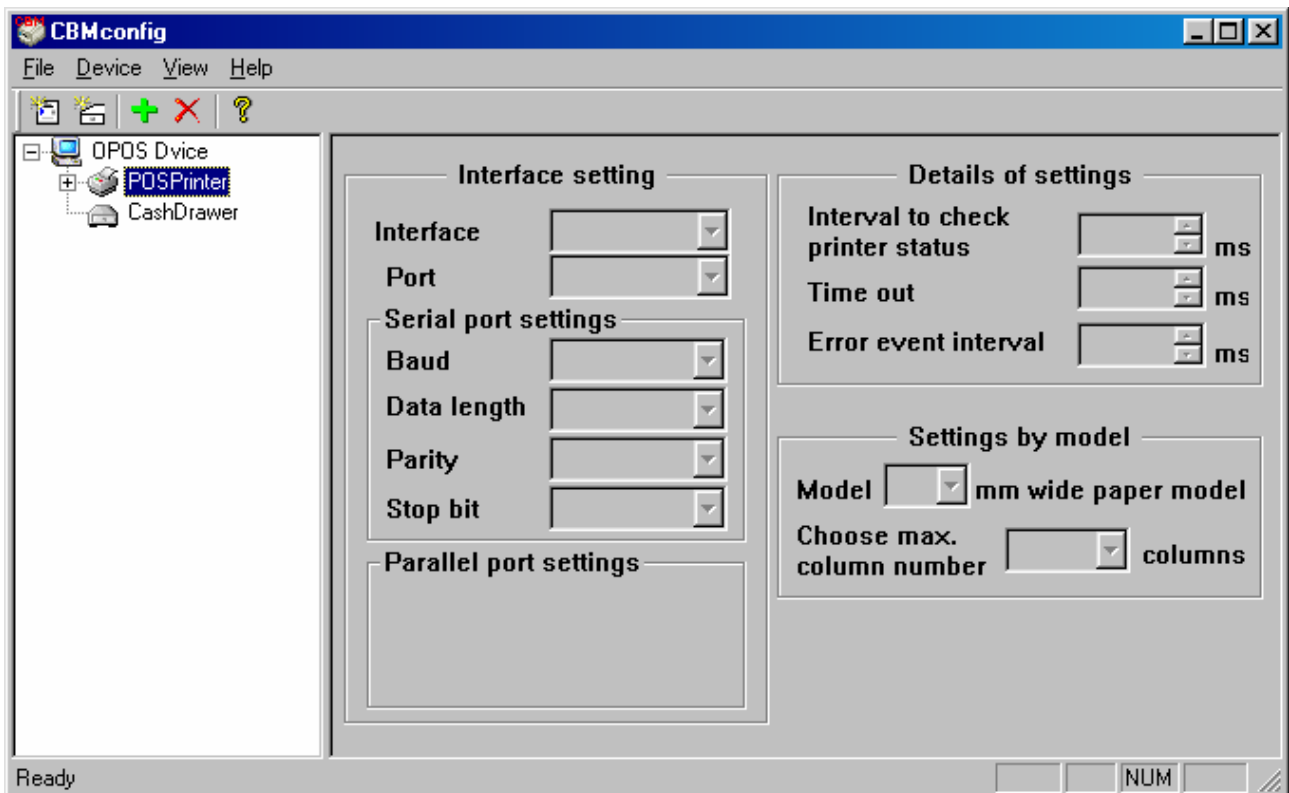
Carefully read the software license agreement and click [Yes].



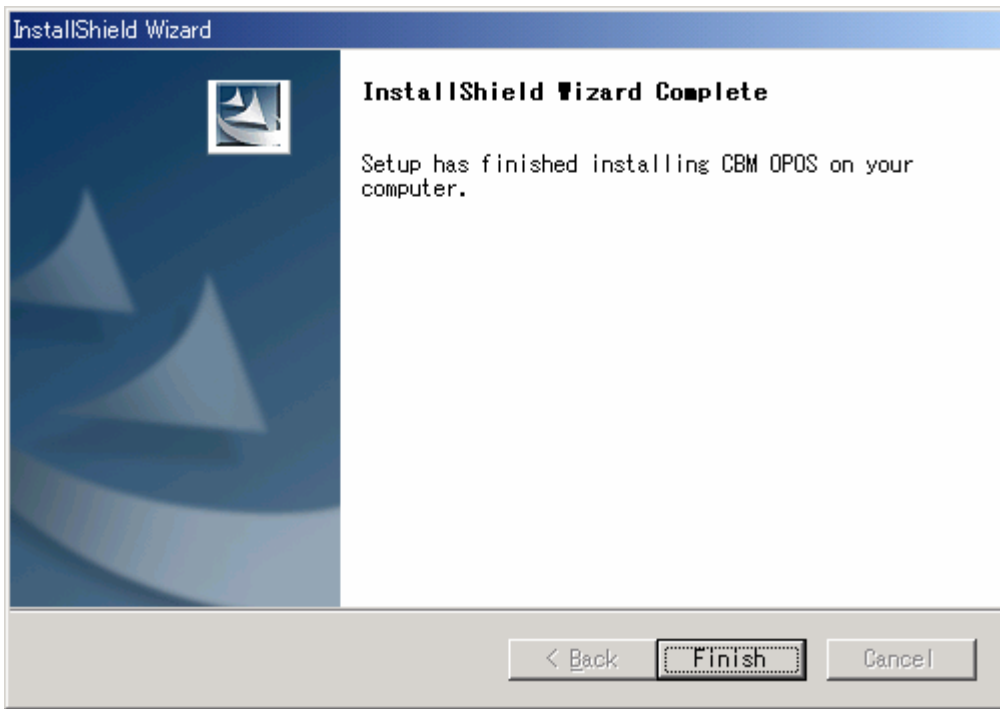
Choose the directory where you wish to place the application program. To change the destination folder, click the [Browse...] button.



Choose the setup type you want.
 Normally select “Typical”.
 Click [Next] to start copying files.



When copying files is completed, the setting tool starts automatically.
 Perform printer setting. (Refer to “Printer Setting Tool”.)



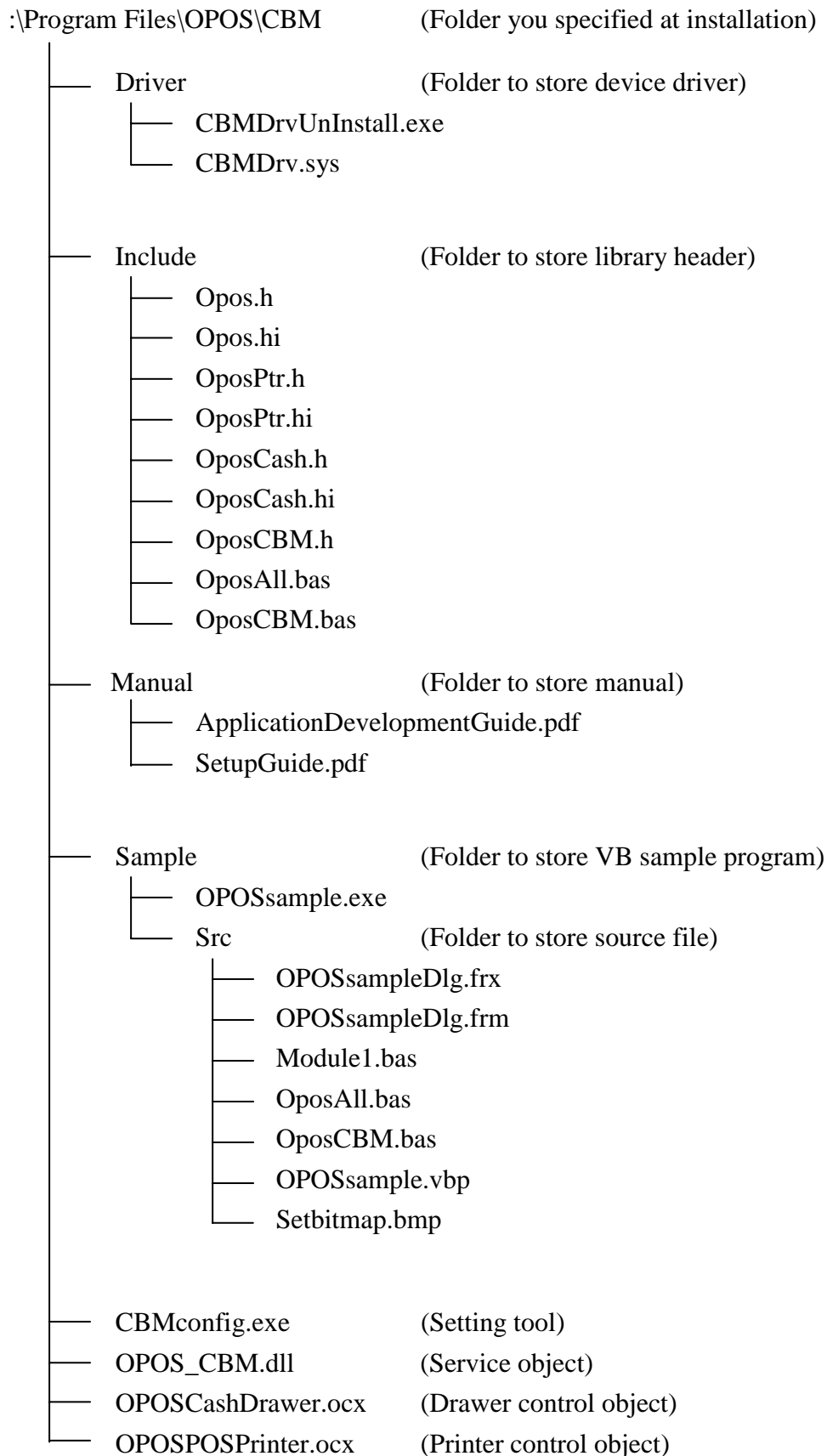
Installation has finished.
Click [Finish].

Remarks:

If the parallel interface printer is used, when the PC is started, it is required to install printer driver by driver install wizard. To stop the install wizard, it is necessary to install printer driver. Please refer to the manual that comes with driver for the details of printer driver.

2. INSTALLATION CONFIGURATION

The following describes the files to be installed with the product.



3. UNINSTALLATION

The following describes uninstallation of the product.

Delete registry

Delete printer and drawer using printer setting tool.

When you want to keep the printer setting, this step is not required.

(In the OPOS upgrading, keeping the printer setting is recommended.)

Delete OPOS

Choose CBM OPOS from “Adding and deleting application” of Control Panel and delete it.

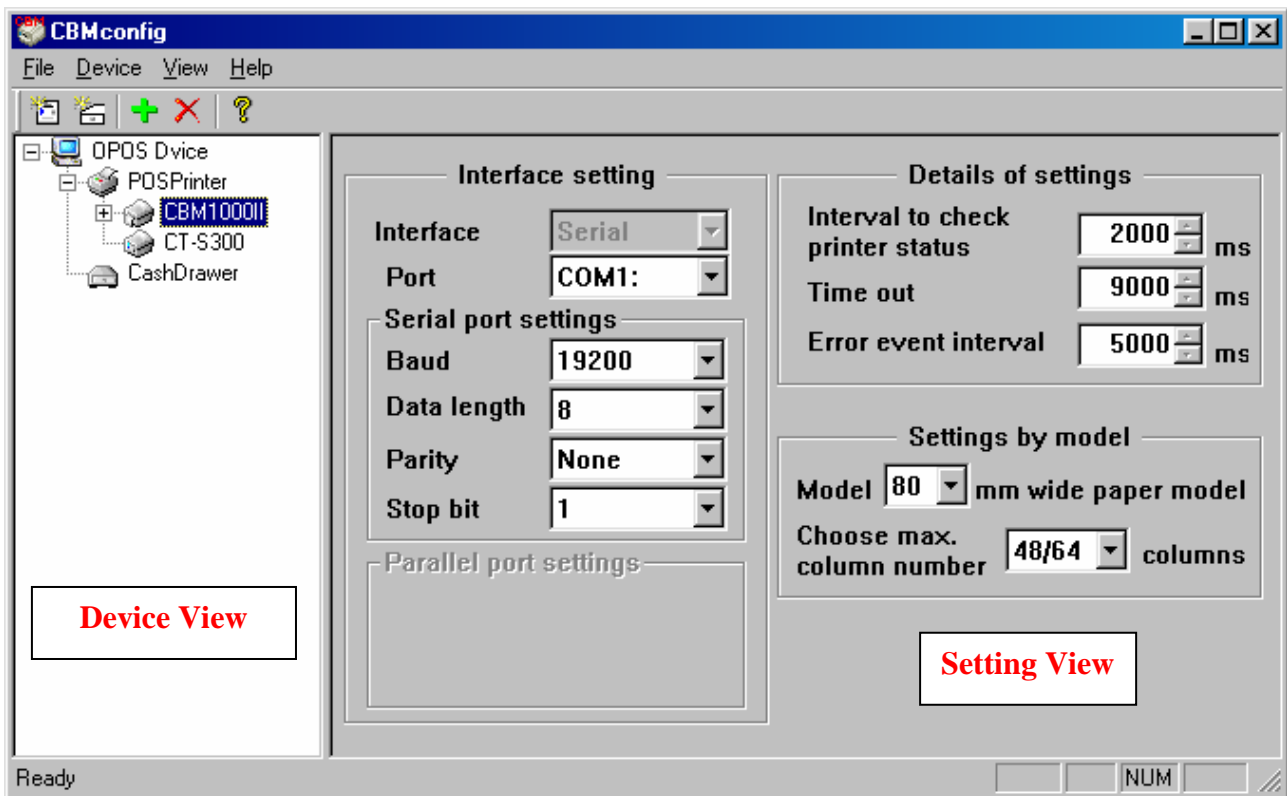
4. PRINTER SETTING TOOL

The following describes the printer setting tool (CBMconfig.exe).

The setting tool can be started by “CBMOPOS” - “CBMConfig” from the start menu.

This is automatically installed at the time of installation.

Main Screen



Device View

A list of added devices is shown.

It is displayed in tree structure of Physical device - Logical device.

Selects each device and changes the setting in the setting view.

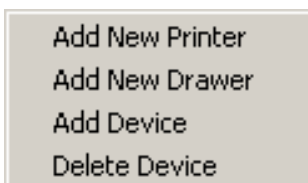
Setting View

Displays and changes current setting of each device.

Change is effected immediately.


Right-Click Menu

In Device View, Right-Click Menu is displayed.

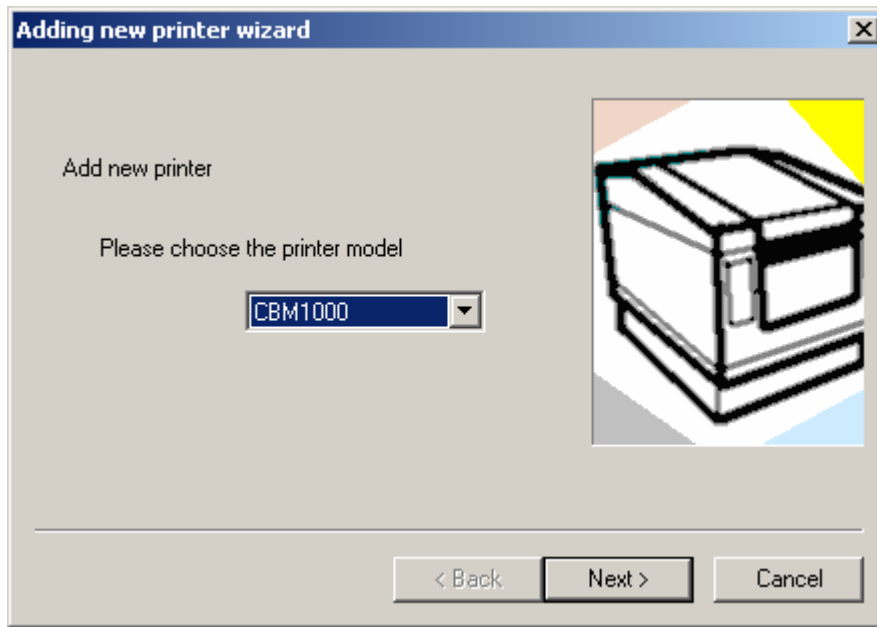


5. ADDING A NEW PRINTER

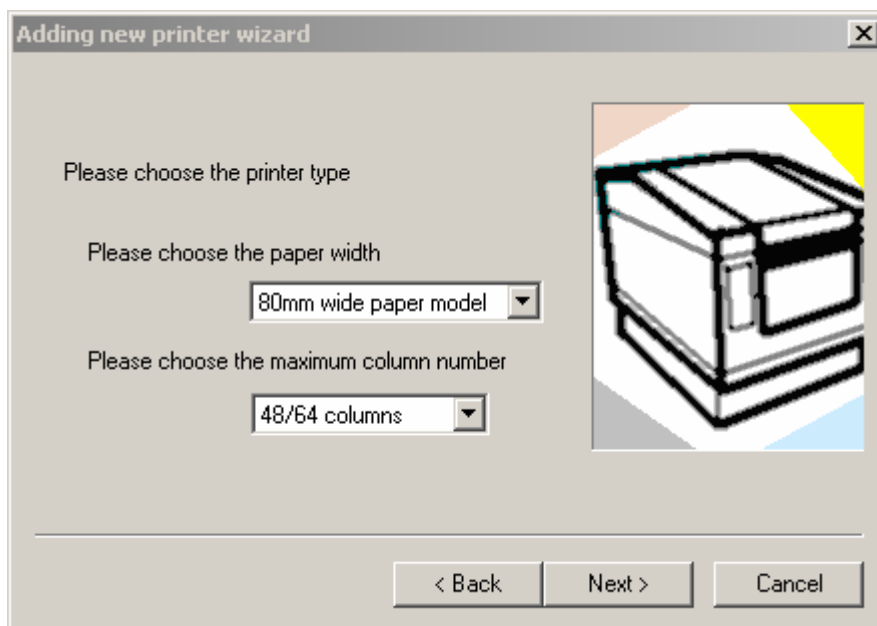
This procedure helps you add a new printer.

Select “Create new printer” button  , “Create new printer” in “Device” menu, or “Add New Printer” in “Right-Click Menu”.

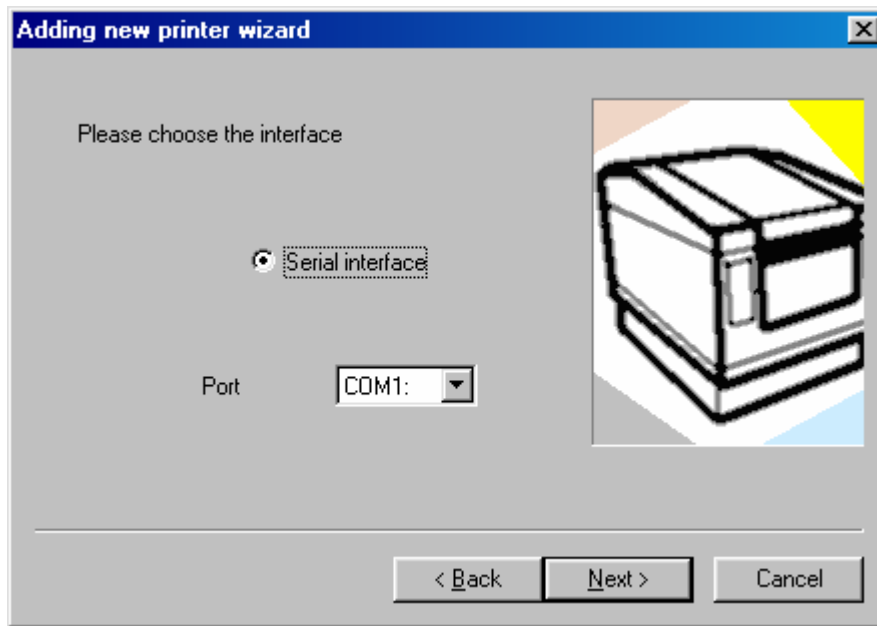
Adding new printer wizard starts.



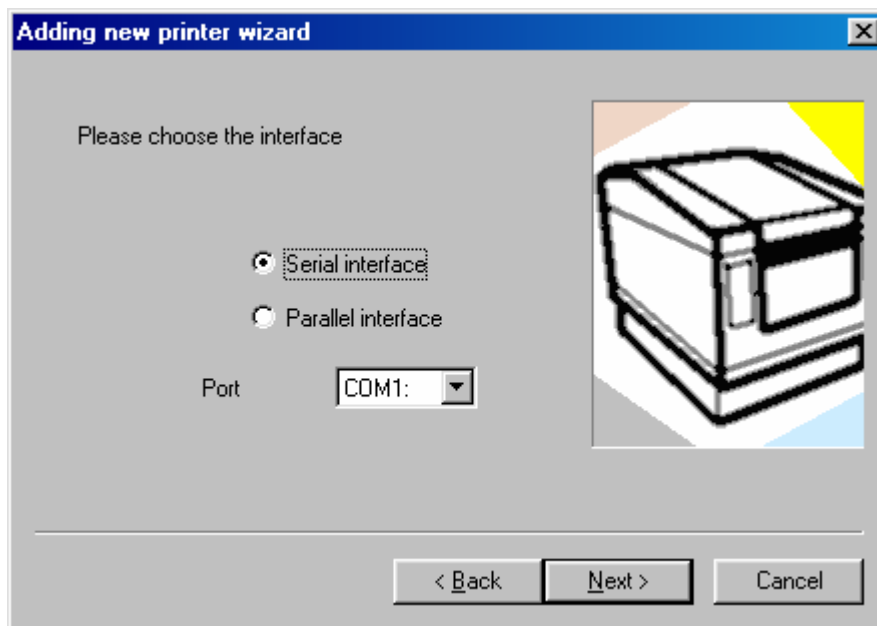
Selects the printer type you want to add and click [Next].



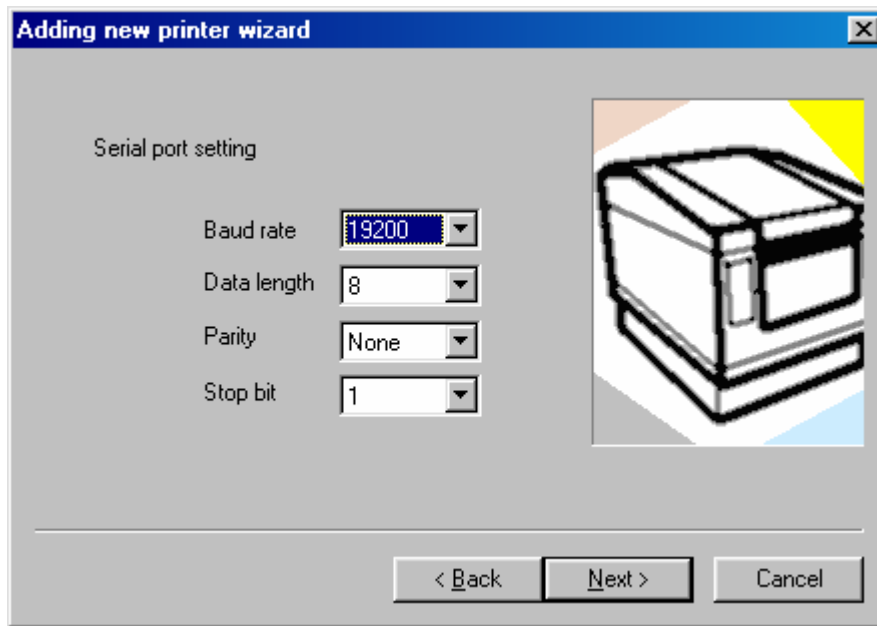
Referring to Printer’s manual, select paper size and maximum number of digits. After selection, click [Next].



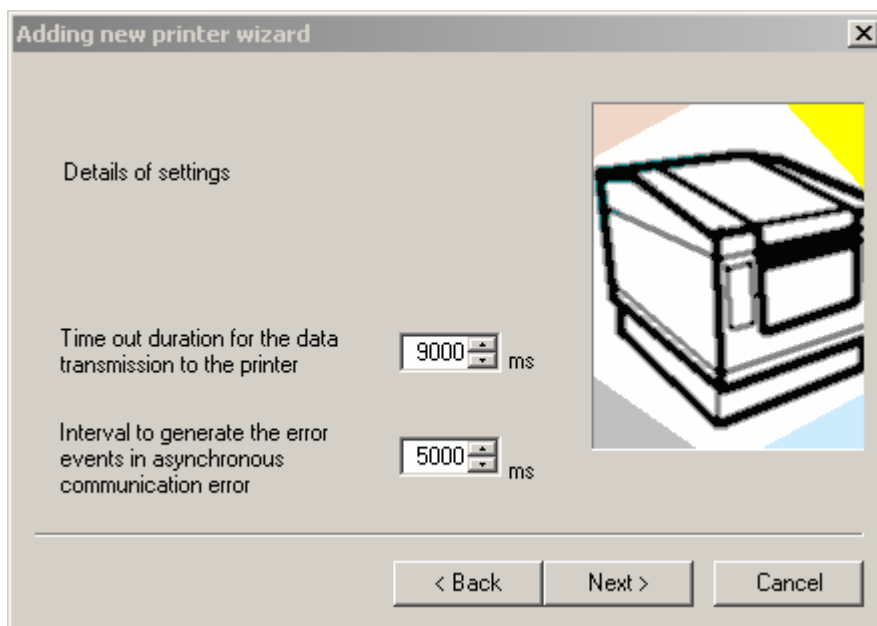
Select the port you want to use.
Click [Next].



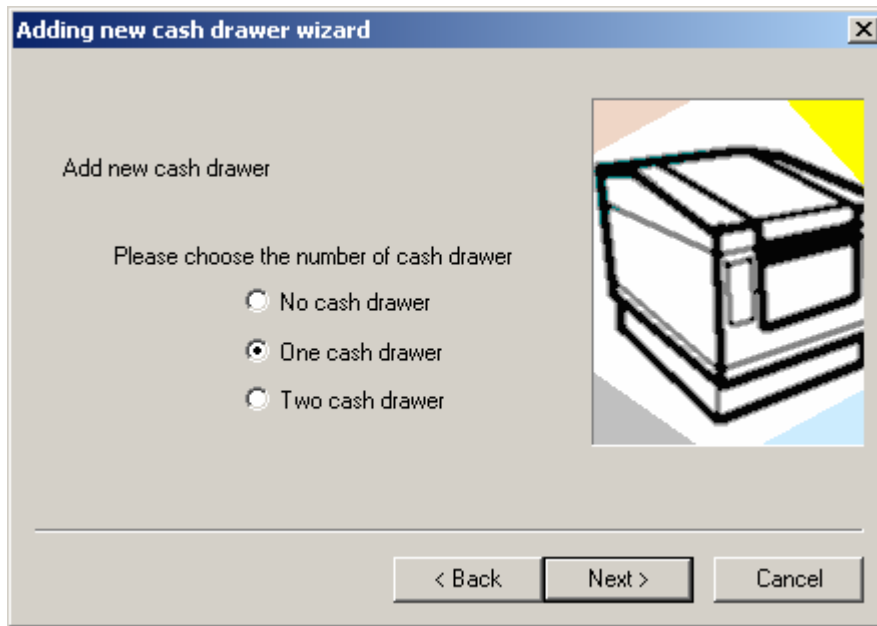
If parallel connection is available, selecting either Serial interface or Parallel interface is required.
Follow the interface setting referring to the printer's manual.
After setting, click [Next].



Referring to Printer’s manual, perform the setting of serial interface or the setting of parallel interface setting.
 After setting, click [Next].

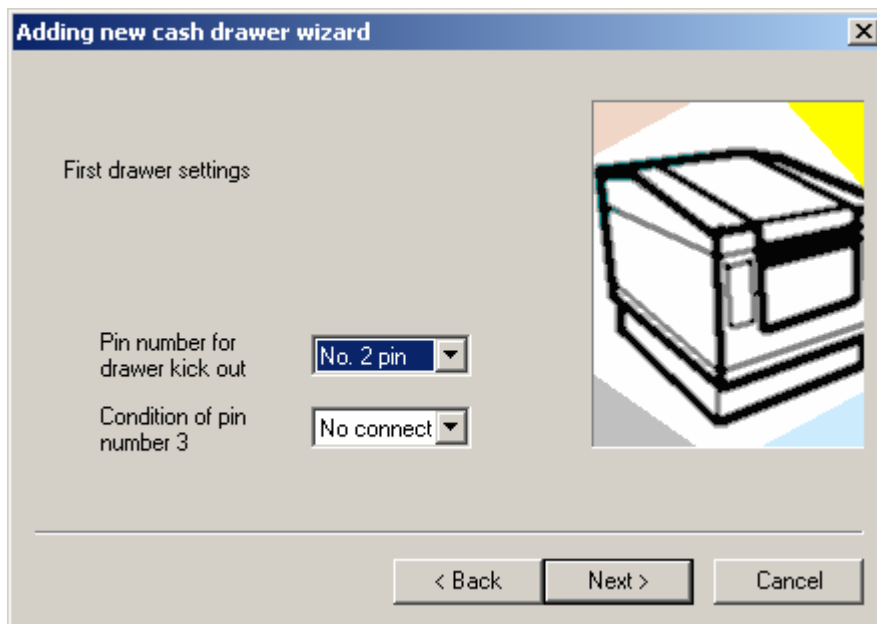


Perform details setting.
 Unless otherwise specified, keep the set value and click [Next].



Adding a drawer

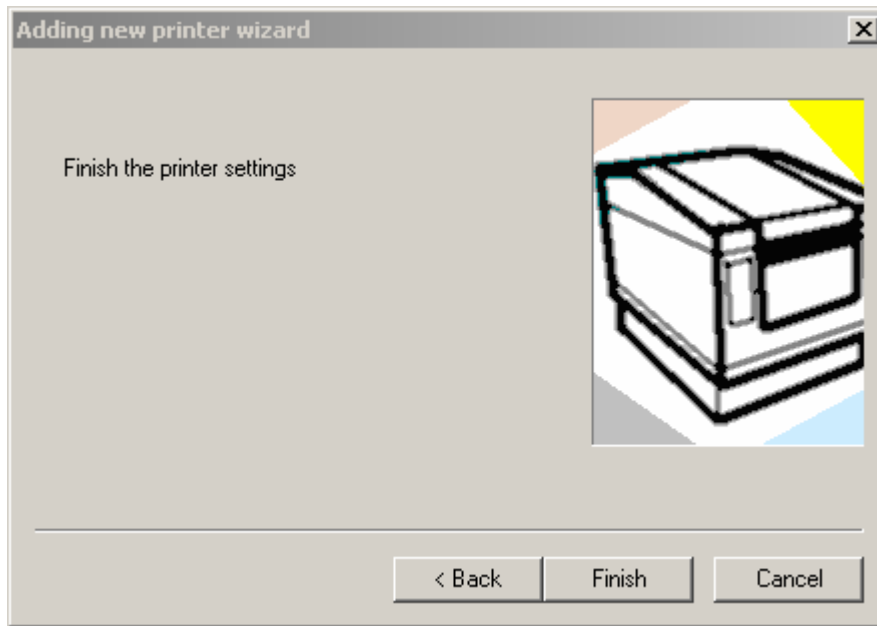
If you have any drawer you want to connect, select the number of drawers.
 If you have no drawer to be connected, the following step is omitted.



Setting 1st drawer

Referring to the manual, perform setting.


If you have two drawers to be connected, click [Next] and follow the same setting for 2nd drawer.



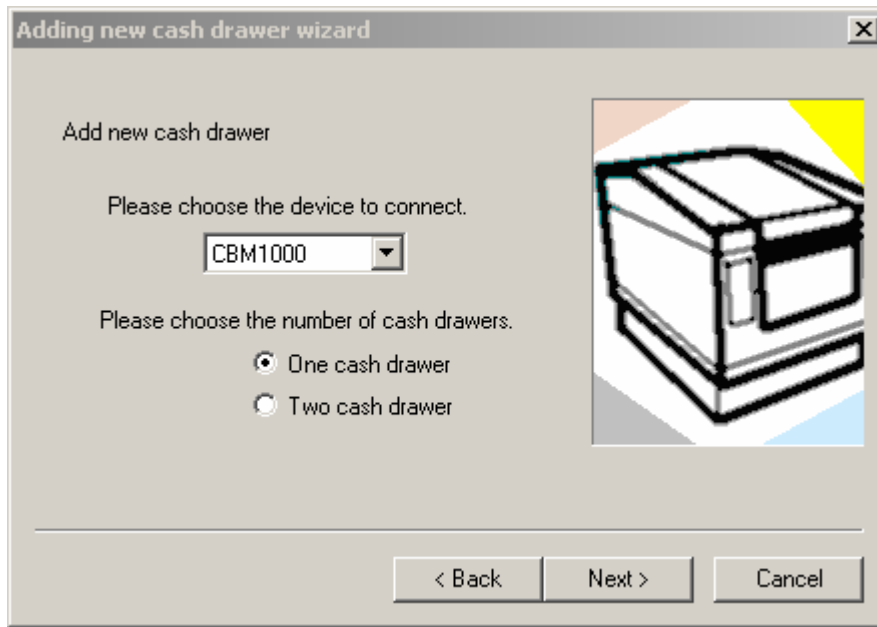
Click [Finish] to add a printer and a drawer.

6. ADDING NEW DRAWER

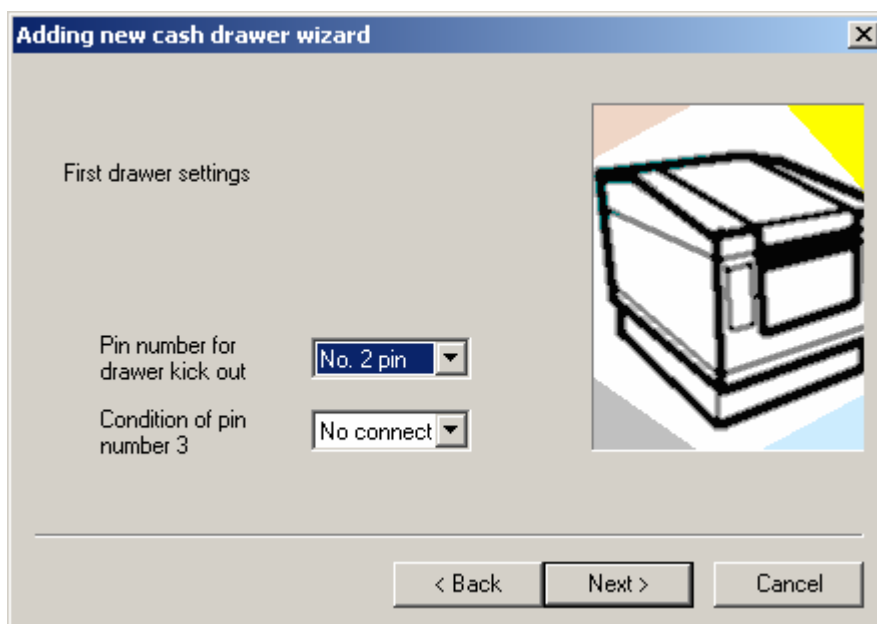
This procedure helps you add a drawer to the printer.

Select “Create new drawer” button , “Create new drawer” in “Device” menu, or “Add New Drawer” of “Right-Click Menu”.

Adding new cash drawer wizard starts.



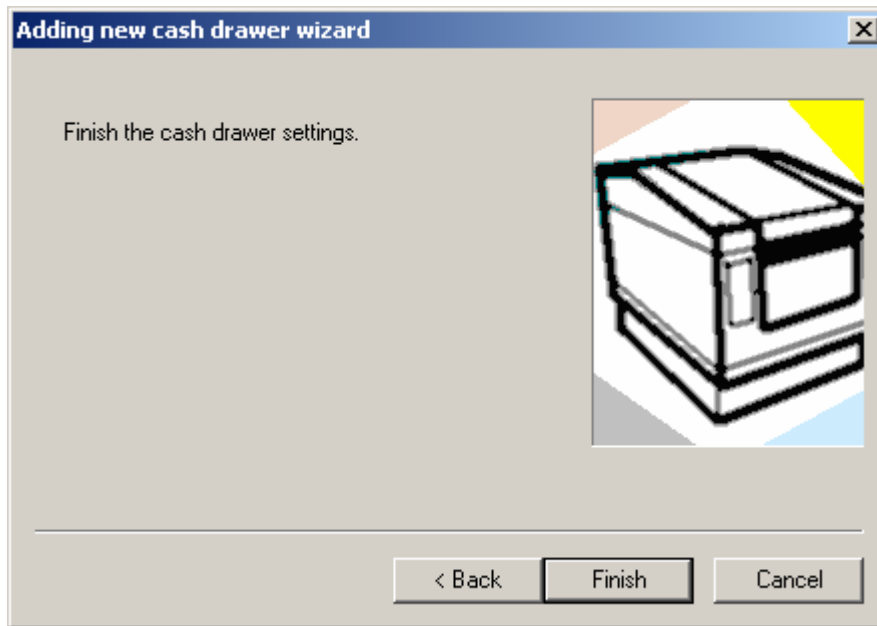
Select the printer to which the drawer is added and the number of drawers to be connected and click [Next].



Perform the setting on the 1st drawer.

Referring to the manual, perform setting.


If you have two drawers to be connected, click [Next] and follow the same setting for 2nd drawer.

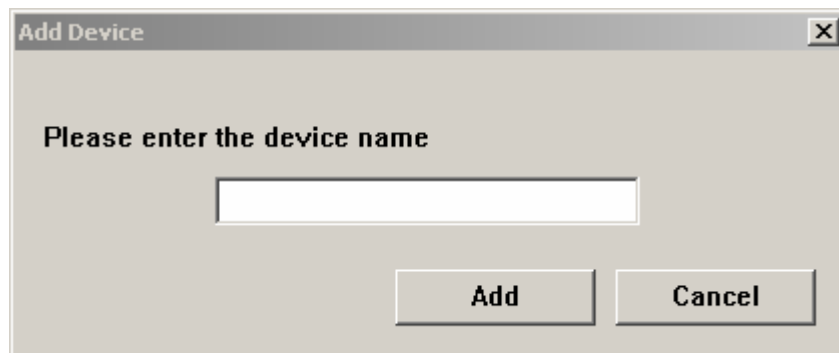


Click [Finish] to add a drawer.

7. ADDING LOGICAL DEVICE

This procedure helps you add a logical device to the printer and drawer.

Select the printer or drawer to which a logical device is added, select “Add device” button , “Add logical device” of “Device” menu, or “Add Device” of “Right-Click Menu”.



Enter a logical device name you want to add and click the [Add] button.

8. DELETING DEVICE

This procedure helps you delete a logical device or physical device

Select the device you want to delete and select “Delete device” button , “Delete device” of “Device” menu, or “Delete Device” of “Right-Click Menu”.

If you deleted physical devices, all logical devices added to the devices are deleted.

9. SETTING PRINTER

Please check DIP switch setting and memory switch setting of the printer follows followings. Please refer to User's manual for the details.

Setting List of DIP Switch

SW No.	CBM-1000-RF		CBM-1000II-RF		CBM-1000II-PF		CT-S300-RF		iDP-3240-RF		CBM-262II-RF		CBM-262II-PF		
1-1	Auto cutter	ON	Auto cutter	ON	Auto cutter	ON	Communicati on condition setting method	ON	Auto cutter	ON	Serial Interface Data Length	—	Bidirection	ON	
1-2	Print mode	—	Unused	OFF	Unused	OFF	Hand shake	OFF	Cover open	OFF	I/F Protocol	OFF	ACK	OFF	
1-3	Paper width	—	Paper width	—	Paper width	—	Bit length	—	Easy Loading	OFF	Parity	—	NOT USE	OFF	
1-4	Print columns	—	Print columns	—	Print columns	—	Parity check	—	Print columns	—		—		OFF	
1-5	CR mode	OFF	CR mode	OFF	CR mode	OFF	Parity selection	—	CR mode	OFF	Baud Rate	—	NOT USE	OFF	
1-6	Input buffer	OFF	Input buffer	OFF	Input buffer	OFF	Baud rate selection	—	Input buffer	OFF		—	NOT USE	OFF	
1-7	Print density	—	Print density	—	Print density	—	INIT	OFF	Print density	—	Unused	—	NOT USE	OFF	
1-8		—		—		—				—		—	OFF	—	OFF
2-1	Character code	ON	Character code	ON	Character code	ON			Character code	ON					
2-2		OFF		OFF		OFF				OFF					OFF
2-3		OFF		OFF		OFF				OFF					OFF
2-4		OFF		OFF		OFF				OFF					OFF
2-5	JIS/Shift JIS	—	Unused	OFF	Unused	OFF			JIS/Shift JIS	—					
2-6	Condition for BUSY to Occur	ON	Condition for BUSY to Occur	ON	Condition for BUSY to Occur	ON			Condition for BUSY to Occur	ON					
2-7	Unused	OFF	Paper	OFF	Paper	OFF			Unused	OFF					
2-8	Unused	OFF	Detection	OFF	Detection	OFF			Unused	OFF					
2-9			Label Length set	OFF	Label Length set	OFF									
2-10			Unused	OFF	Unused	OFF									
3-1	Bit length	—	Bit length	—	Bit length	—	Bit length	—							
3-2	Parity	—	Parity	—	Parity	—	Parity	—							
3-3	Odd/Even	—	Odd/Even	—	Odd/Even	—	Odd/Even	—							
3-4	Communicati on mode	OFF	Communicati on mode	OFF	Communicati on mode	OFF	Communicati on mode	OFF							
3-5			Baud rate	—	Baud rate	—									
3-6				—		—									
3-7				DSR		OFF	DSR	OFF							
3-8				INIT		OFF	INIT	OFF							
4-1	Baud rate	—					Baud rate	—							
4-2		—						—							
4-3	DSR	OFF					DSR	OFF							
4-4	INIT	OFF					INIT	OFF							

Setting List of Memory Switch

SW No.	CT-S300-RF		SW No.	CBM-262II-RF		CBM-262II-PF	
1-1	Power ON Info	OFF	1	Receipt print density	—	Receipt print density	—
1-2	Buffer Size	OFF	2	Journal print density	—	Journal print density	—
1-3	Busy Condition	OFF	3	Cover Opoen Sensor	Valid	Cover Opoen Sensor	Valid
1-4	Receive Error	OFF	4	Auto Cutter	Valid	Auto Cutter	Valid
1-5	CR mode	OFF	5	Auto Loading	—	Auto Loading	—
1-6	Reserved	OFF	6	Receipt Paper Near End	—	Receipt Paper Near End	—
1-7	DSR Signal	OFF	7	Journal Paper Near End	—	Journal Paper Near End	—
1-8	Init Signal	OFF	8	CR Control	Ignore	CR Control	Ignore
2-1	Reserved	ON	9	Reset by INIT	Invalid		
2-2	Auto Cutter	ON	10	Reset by DSR	Invalid		
2-3	Spool Print	OFF	11	Error Handshake	Invalid	Error Handshake	Invalid
2-4	Full Col Printing	ON	12	Input Buffer	8KB	Input Buffer	8KB
2-5	Resume aft PE	OFF	13	High Quality Print	—	High Quality Print	—
2-6	Paper width	—	14	Country	U.S.A	Country	U.S.A
2-7	Reserved	OFF	15	Caracter Set	—	Caracter Set	—
2-8	NPE Sensor	OFF	16	CBM262 Compatible	Invalid	CBM262 Compatible	Invalid
3-1	Resume Ctrr Err	OFF	17	Power On Data Set	Valid	Power On Data Set	Invalid
3-2	Resume Open Err	OFF	18	Stop Bit	—		
3-3	Parallel 31PIN	OFF					
3-4	Paper Select	OFF					
3-5	Column Number	—					
3-6	No use	OFF					
3-7	CBM1000 mode	OFF					
3-8	Open w/Printing	OFF					
4-1	Auto Length	OFF					
4-2	BM Sensor	OFF					
4-3	No use	OFF					
4-4	No use	OFF					
4-5	No use	OFF					
4-6	No use	OFF					
4-7	No use	OFF					
4-8	Full Cut Cmd	OFF					

10. FIRMWARE VERSION OF PRINTER

For CBM-1000II-PF(Parallel interface), please make sure the firmware version is later than V3.16000.
The firmware before V3.16000, OPOS driver does not work.