



# **Barcode Printer Utility**

---

Version 1.0.0.0

User's Manual

## Copyrights

CITIZEN is a registered trade mark of Citizen Holdings Co., Ltd.

Windows® is a registered trade mark of Microsoft Corporation.

Datamax® is a registered trade mark of Datamax-O'Neil.

Zebra® is a registered trade mark of Zebra Technologies Corporation.

All other trademarks are the property of their respective owners.

Specifications subject to change without notice.

Copyright © 2011, CITIZEN SYSTEMS JAPAN CO., LTD. All rights reserved.

[www.citizen-systems.co.jp](http://www.citizen-systems.co.jp)

## Revision History

<b>Date</b>	<b>Note</b>
July 2011	First publication

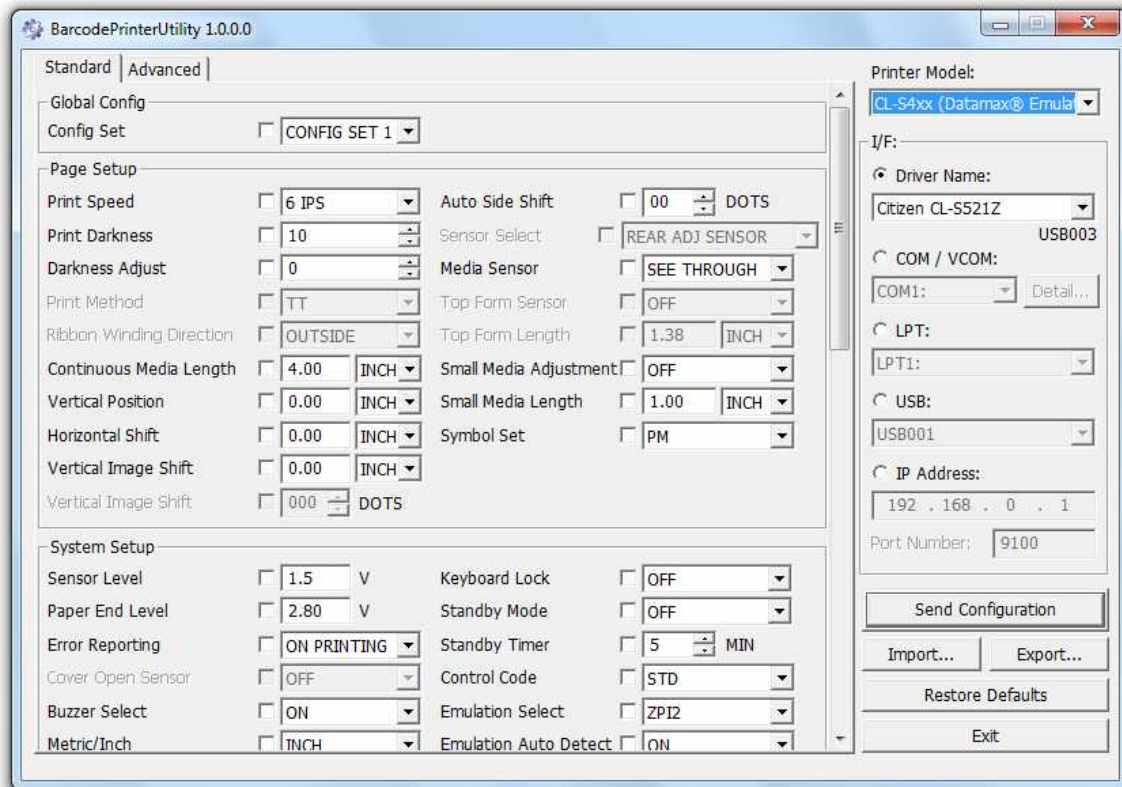
# CONTENTS

- 1. Getting Started ..... 5**
  - Utility Features Overview ..... 5
  - System Requirements and Languages ..... 5
  - Installing/Uninstalling the Utility ..... 6
  - Quick Start ..... 6
  
- 2. Interface ..... 7**
  - Printer Driver ..... 7
  - Serial (COM/VCOM) ..... 8
  - Parallel (LPT) ..... 8
  - USB ..... 8
  - LAN ..... 8
  
- 3. Sending Configuration ..... 9**
  - Printer Models and Emulations ..... 9
  - Standard and Advanced Menus..... 9
  
- 4. Import and Export ..... 10**
  - Configuration File ..... 10

# 1. Getting Started

## Utility Features Overview

Barcode Printer Utility is a utility software program that allows users to configure various functions on Citizen CL-S series with the use of Windows PC. It includes a file export feature so that users can use the same configuration repeatedly with or without this utility.



## System Requirements and Languages

This utility requires Windows XP Professional SP2 or greater operating system.

It automatically detects the language of your Windows PC and the user interface is shown in English in non-Japanese operating systems and in Japanese in Japanese operating systems.

It has been tested with,

- Windows 7 Ultimate x86 English
- Windows 7 Ultimate x86 Traditional Chinese
- Windows XP Professional SP3 x86 Japanese

## Installing/Uninstalling the Utility

Barcode Printer Utility is provided as an exe file. Simply place the exe file into your computer and run it.

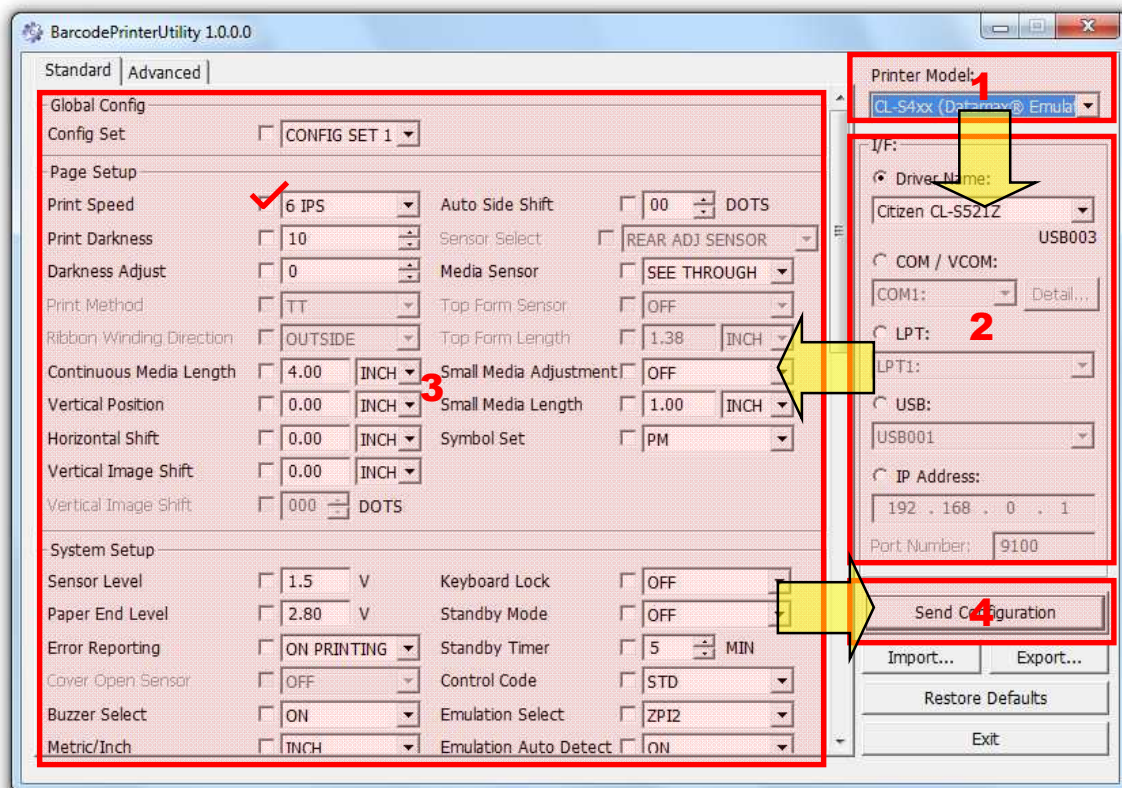


This utility tries to save an "ini" file which contains Printer Model and Interface information you currently used when exit. The utility starts up with the default settings without the ini file. If you run the utility from a CD or any non-writable media, it starts up with the default settings.

## Quick Start

Double click on "BarcodePrinterUtility.exe" to start up the utility, then,

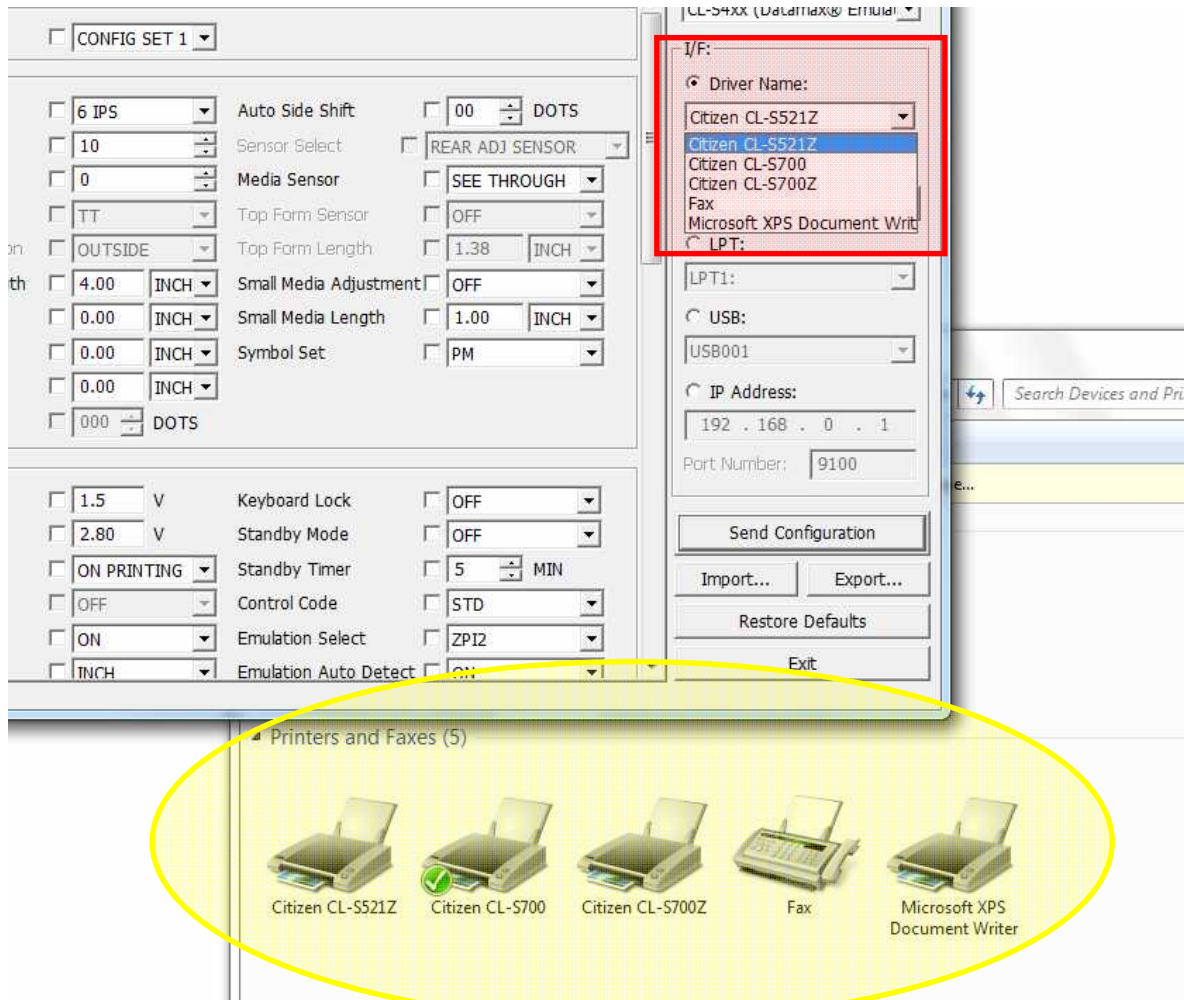
1. Select your printer model to configure.
2. Select the interface which you are using with the printer.
3. Select item(s) you wish to configure. Note that the utility only configures the item(s) with the checkbox "checked".
4. Press "Send Configuration". In most cases, the printer beeps and restarts when the configuration is successfully set.



## 2. Interface

### Printer Driver

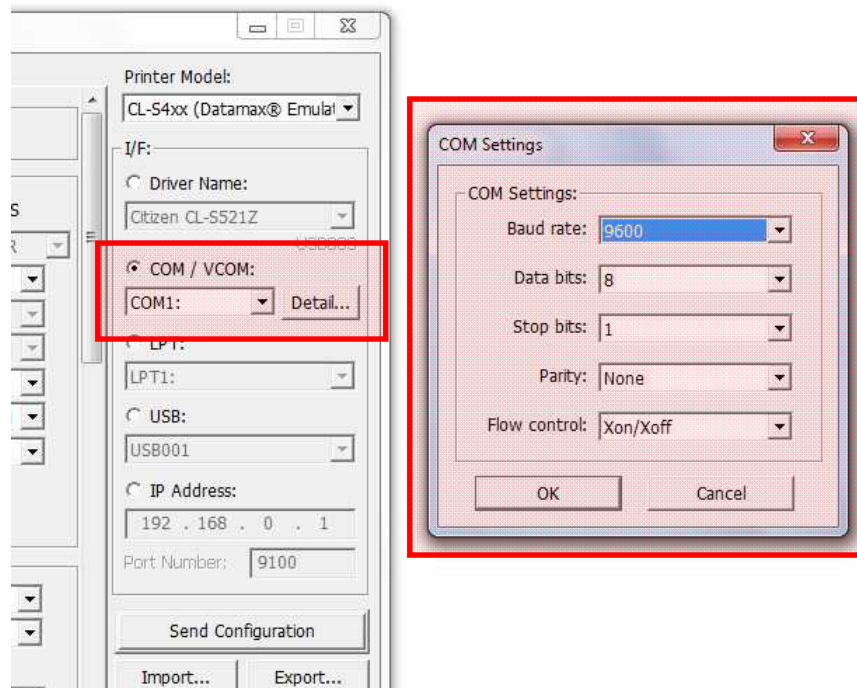
If you select a printer driver as interface, the utility uses the printer port of the printer driver. The drop down list shows the printer driver(s) you have in your Windows PC.



### Serial (COM/VCOM)

In case of Serial interface, select a correct COM port number, press “Detail” to set up a correct COM port setting. The current COM port setting should be shown in the current configuration print of the printer. Please refer the user’s manual of your printer model for the current configuration print.

If you are using the VCOM (Virtual COM) driver, the COM port for the VCOM (e.g. COM8) should show up in the drop down list.



### Parallel (LPT)

In case of Parallel interface, select a correct LPT port.

### USB

In most cases, a printer driver is installed with the use of USB connection. This selection also gives you an option to select a specific USB port.

### LAN

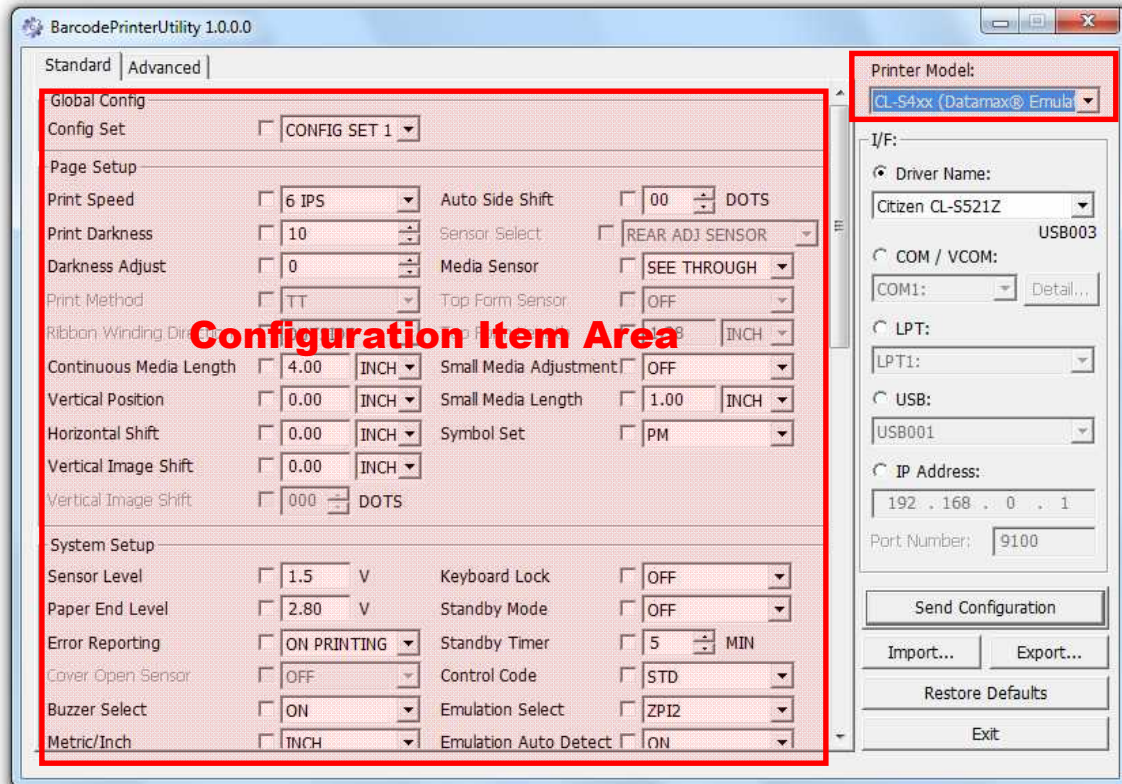
In case of LAN, please type in a correct IP address and port. Citizen Barcode Printer models usually use the port 9100.

### 3. Sending Configuration

#### Printer Models and Emulations

This utility supports the Citizen CL-S4xx, 5xx, 6xx, 7xx series.

The configuration item area shows the items which you are able to configure with the printer model/emulation you selected. Each item will be shown with its default value every time you select a different printer model/emulation.



Selectable items, values and initial values are different depending on your region. Please refer the user's manual of your printer model or consult with your vendor.

#### Standard and Advanced Menus

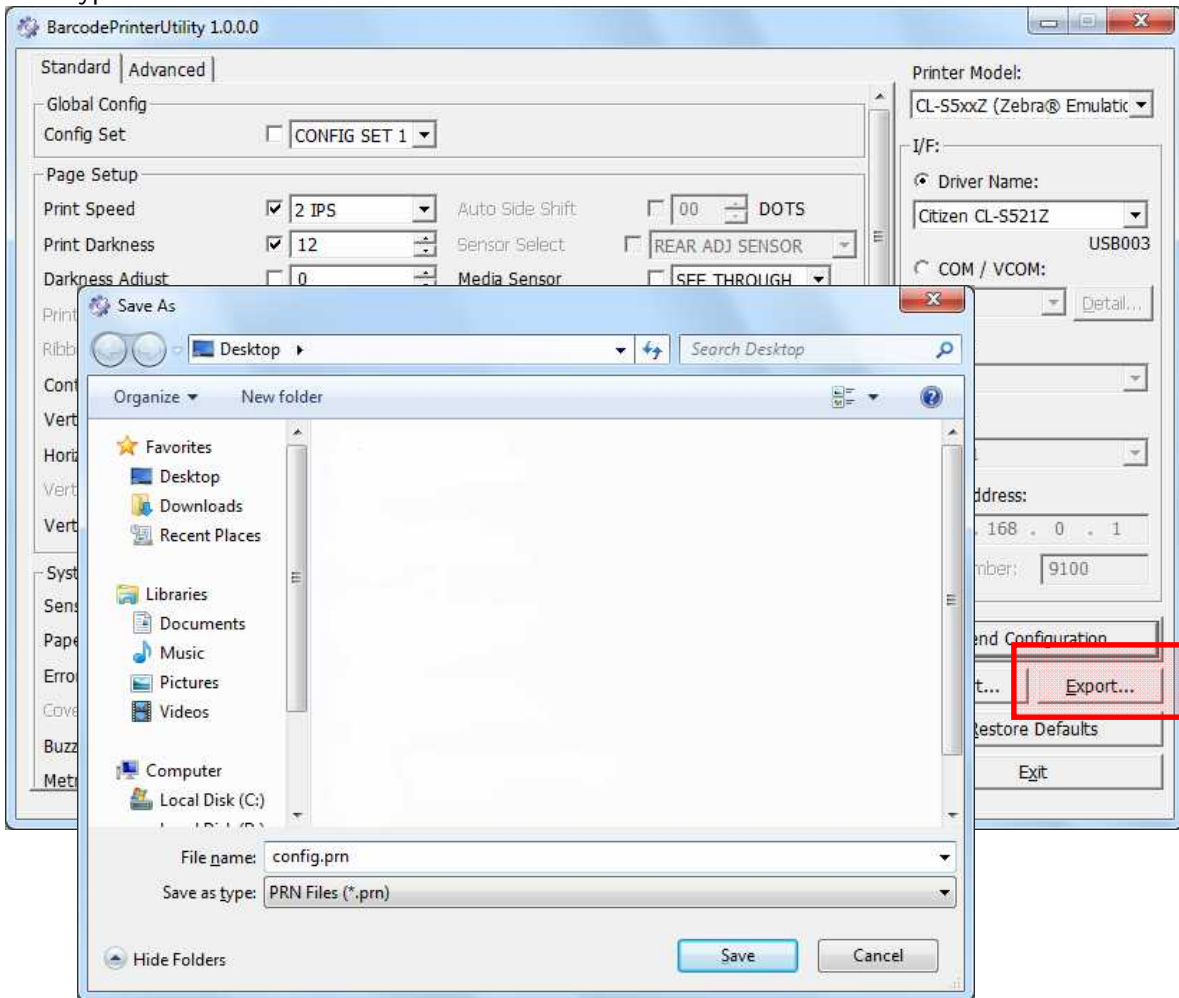
“Advanced” menu contains mechanically sensitive items. Please refrain from changing any values in it if you are not familiar with the item(s) otherwise the printer may get fatal damage.

## 4. Import and Export

### Configuration File

This utility has a functionality to import/export a configuration file. This allows you to keep the settings and use it for multiple printers to configure.

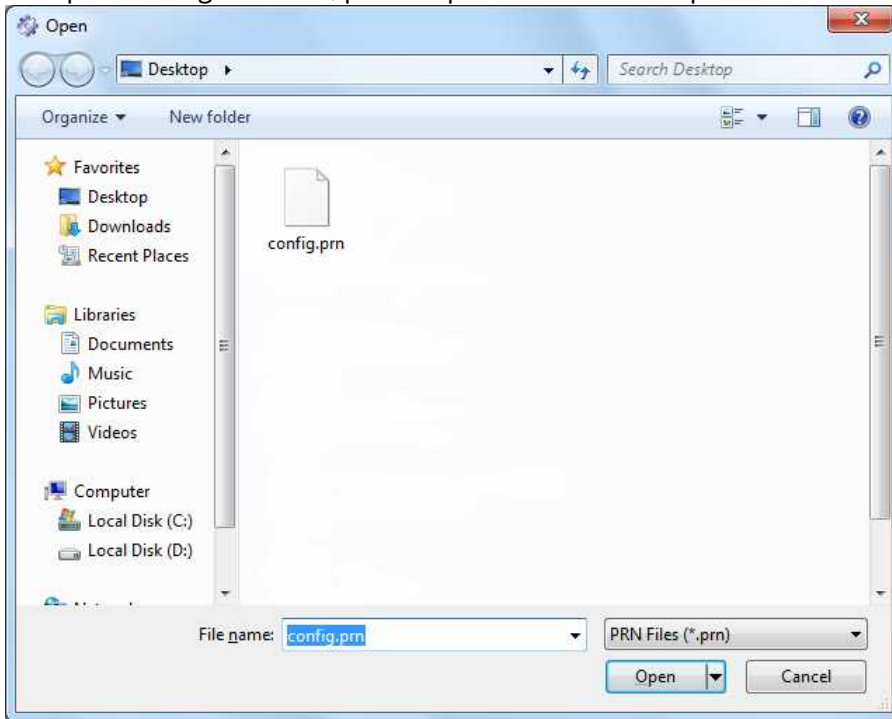
To export a configuration file, press “Export...” instead of “Send Configuration” after you set up items. Then type in a file name and save it.



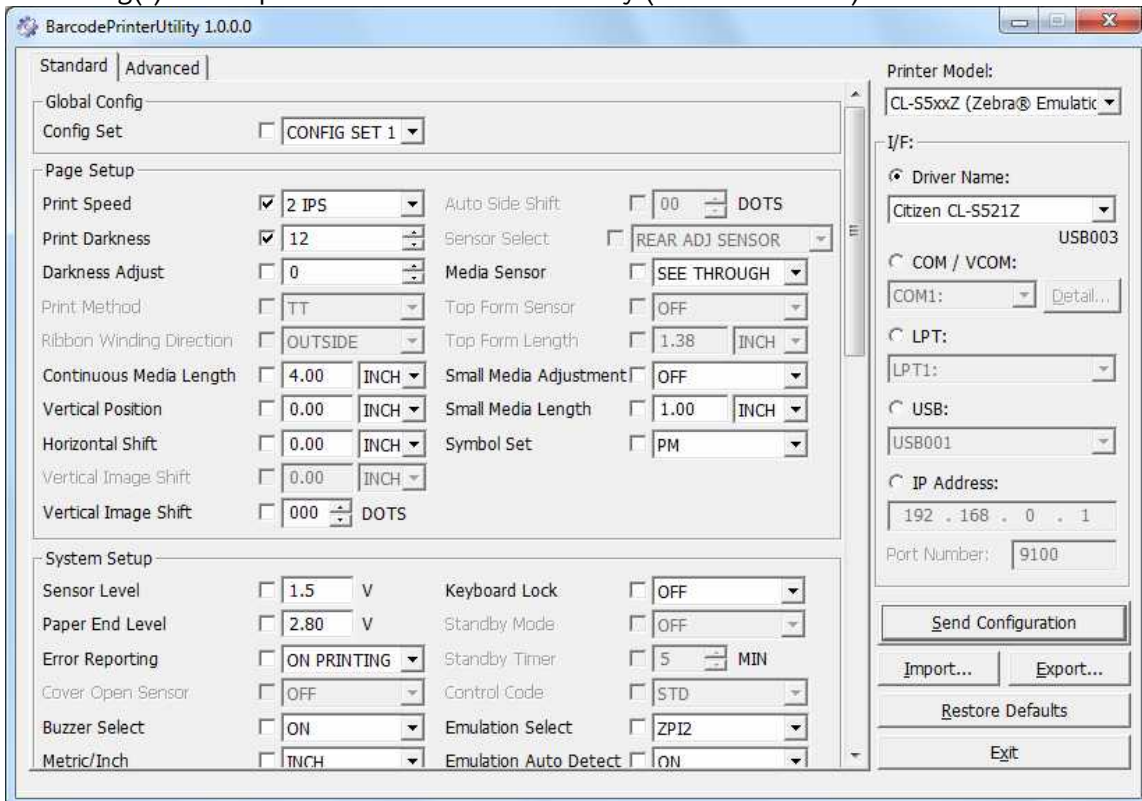
The file will be saved as “.prn” file.



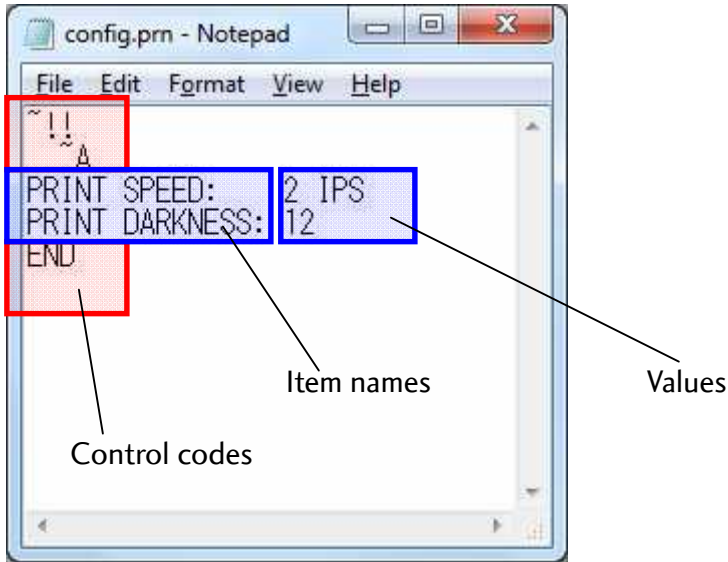
To import a configuration file, press “Import...” and select a “.prn” file.



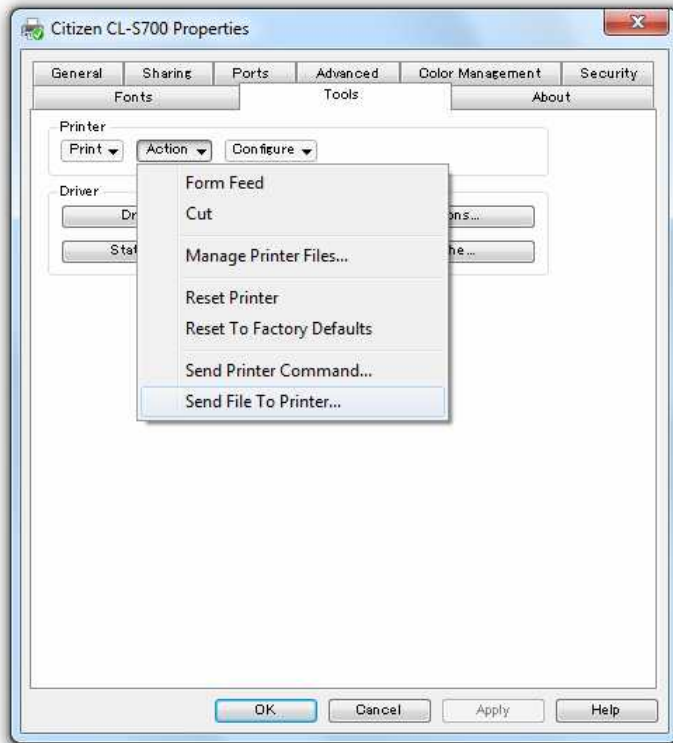
The setting(s) in the “.prn” will be reflected to the utility (if the data is valid).



The “.prn” file can be opened by a text editor however please do not change anything other than the item names or values. Changing control codes makes the configuration file broken (invalid for printer).



The configuration files are also able to be sent by Citizen printer drivers without using the utility.



## **CITIZEN SYSTEMS AMERICA CORPORATION**

363 Van Ness Way, Suite 404  
Torrance, CA 90501 USA  
Tel: (310) 781-1460  
Fax: (310) 781-9152  
<http://www.citizen-systems.com>

## **CITIZEN SYSTEMS EUROPE GmbH**

Mettinger Strasse 11	Park House, 643-651 Staines Road
D-73728, Esslingen	Feltham, Middlesex, TW14 8PA
Germany	United Kingdom
Tel: +49 (0) 711 3906 420	Tel: +44 (0) 20 8893 1900
Fax: +49 (0) 711 3960 405	Fax: +44 (0) 20 8893 0080
<a href="http://www.citizen-europe.com">http://www.citizen-europe.com</a>	

## **CITIZEN SYSTEMS JAPAN CO., LTD.**

6-1-12, Tanashi-cho, Nishi-Tokyo-shi  
Tokyo, 188-8511 Japan  
Tel: +81 (0) 42 468 4608  
Fax: +81 (0) 42 468 4996  
<http://www.citizen-systems.co.jp>