

How to use CT-S300Maintenance.exe

1. Preparation

Please check if following files are in the same folder

CT-S300Maintenance.exe

CT-S300Maintenance.ini

WinIO.DLL

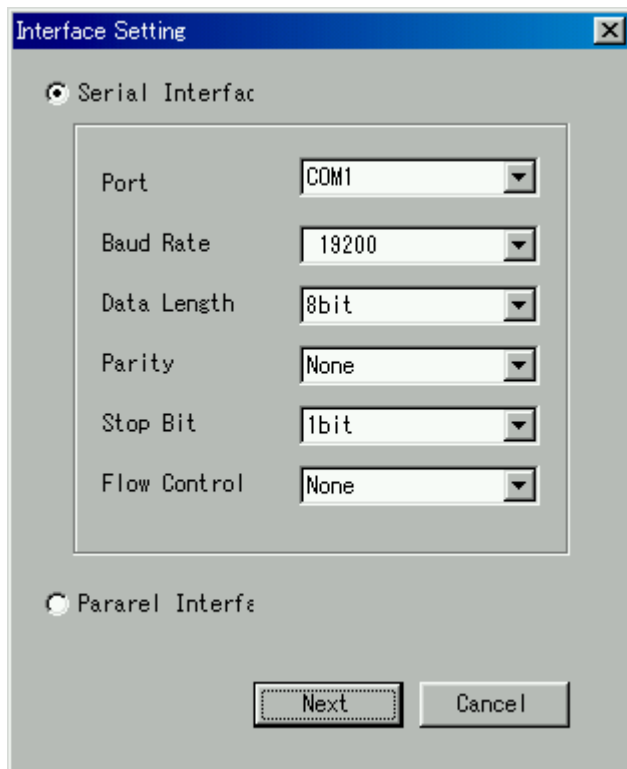
WinIO.SYS

WinIO.VXD

(Do not change any setting in “CT-S300Maintenance.ini” file)

2. Choosing Interface

Run “CT-S300Maintenance.exe” file.



Choose interface

In case of Serial Interface, set the communication condition according to the setting of printer.

Then press “Next”.

3. Firmware Loading

Usually, you do not need to use this function.

Please use it only when it is really necessary.

Set DIP switch for 2-OFF/3-OFF/4-OFF/5-OFF/6-ON/7-ON.

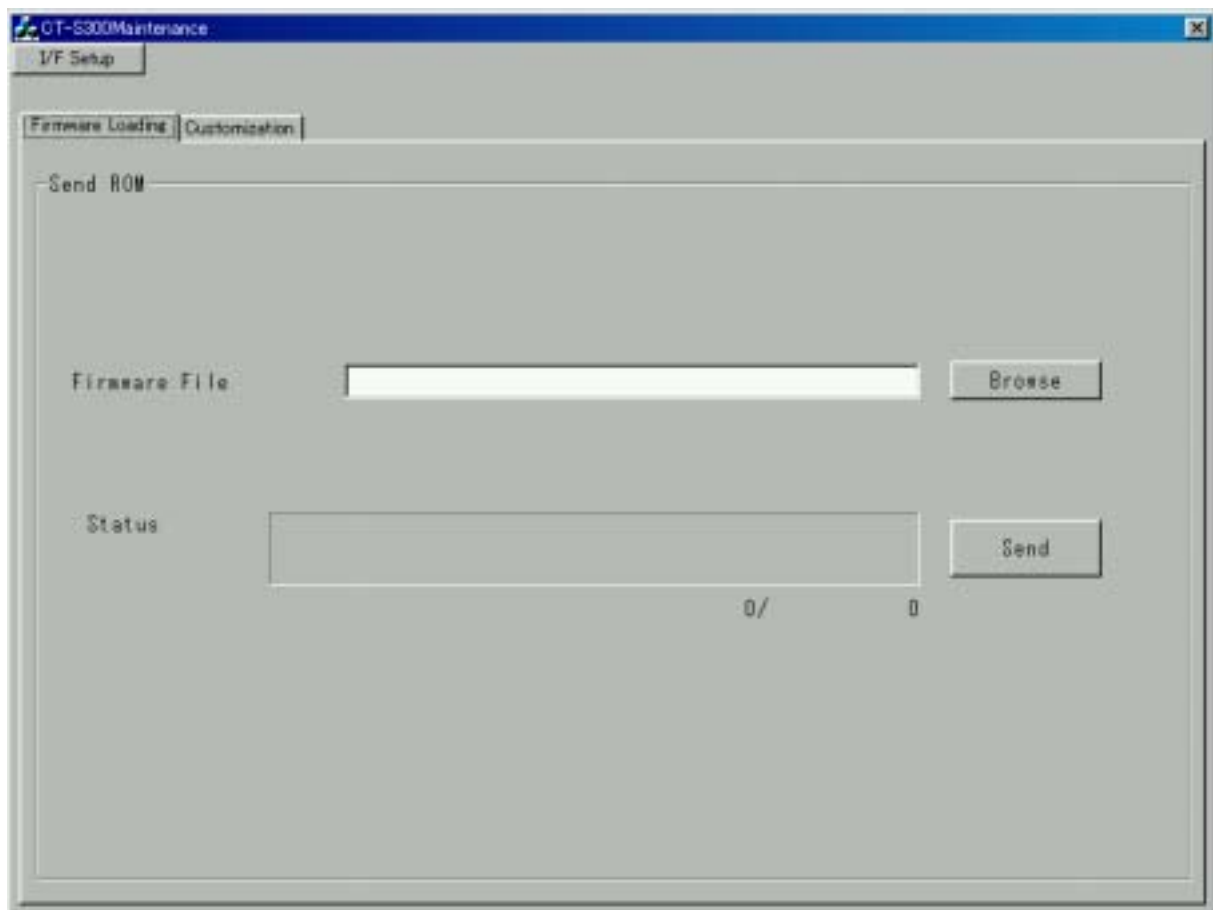
Make the printer go into Firmware Loading mode.

Open Paper cover.

Make the cutter blade out by rotating Cutter Motor Lock Release Screw

Power on while pressing LF switch.

Press LF switch twice.



Choose firmware file by pressing Browse button.

Press Send button

When loading is finished, turn off/on the printer.

If you load the firmware, NV bit image is erased.

Memory switch setting and customize values may be erased depending on the version of firmware.

4. Customization

4.1 Customization mode

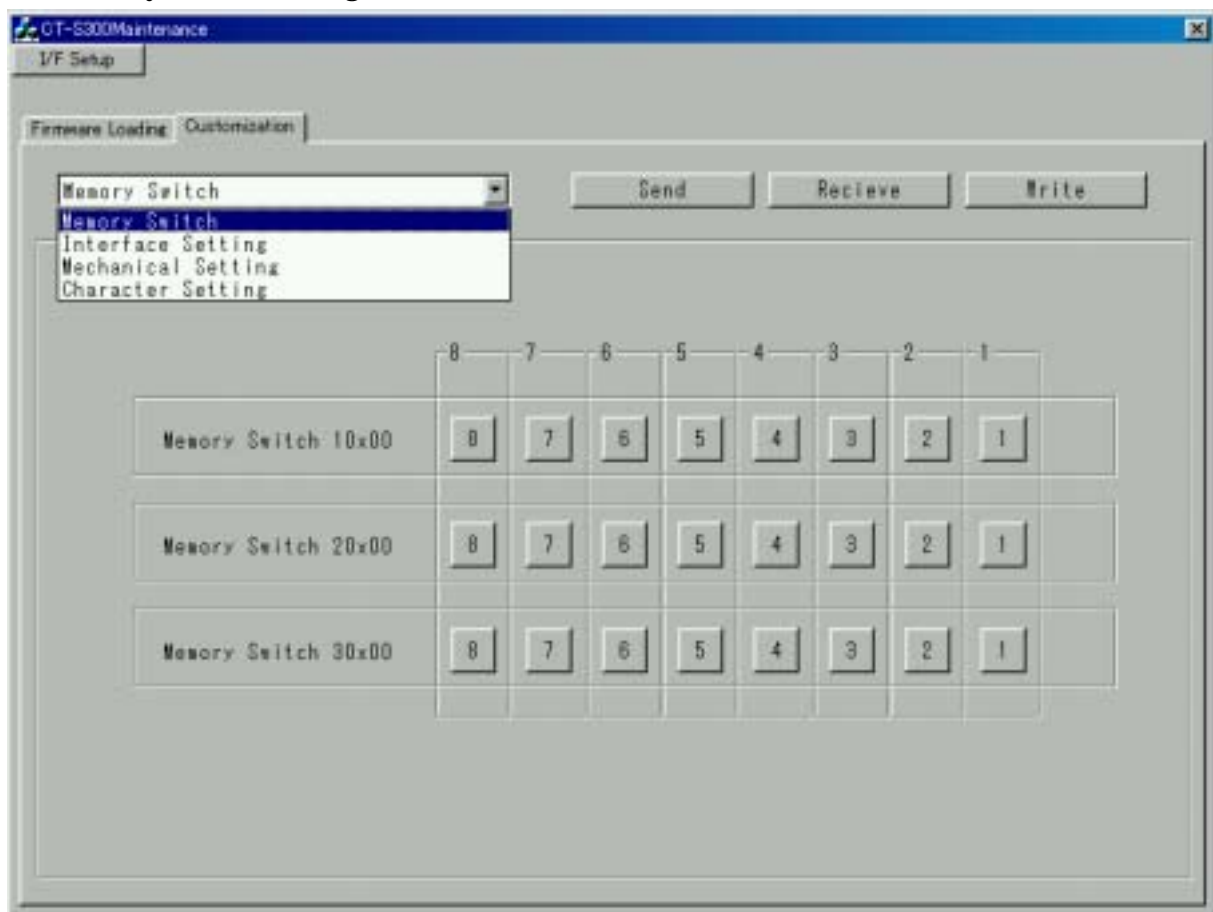
To use the function after this page, you need to make the printer go into Customization mode as per following steps.

- Open Paper cover.
- Power on while pressing LF switch.
- Press LF switch once.

There are 3 buttons for this function and each buttons works as follows.

- Send** Changed setting is sent to the printer. But new setting is not effective until pressing “Write” button.
- Receive** By pressing this button, current setting information can be sent from printer to this software and the values on this software is changed accordingly.
- Write** If this button is not pressed, new setting is not effective.

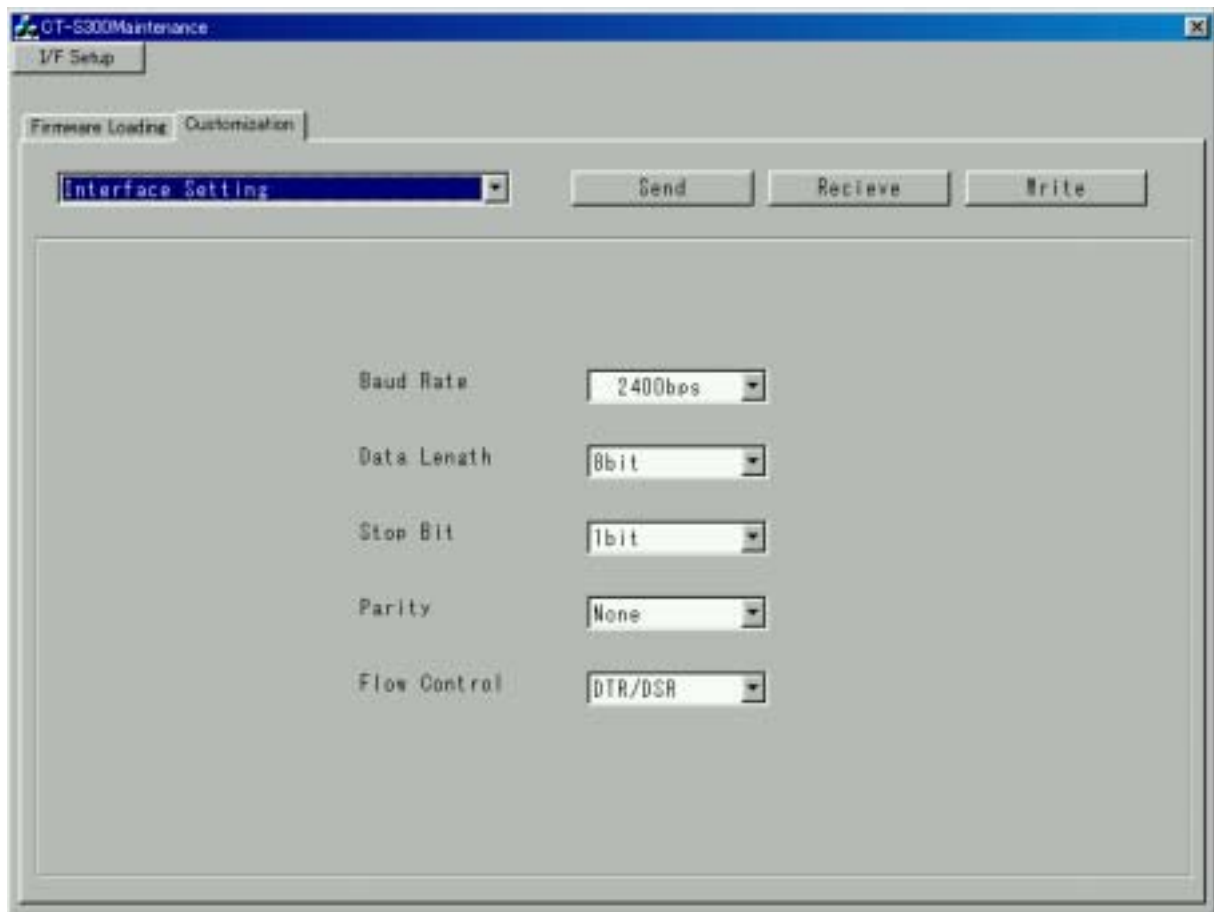
4.2 Memory Switch Setting



Choose the button of memory switch to make it ON.

Please refer to the last page of this document.

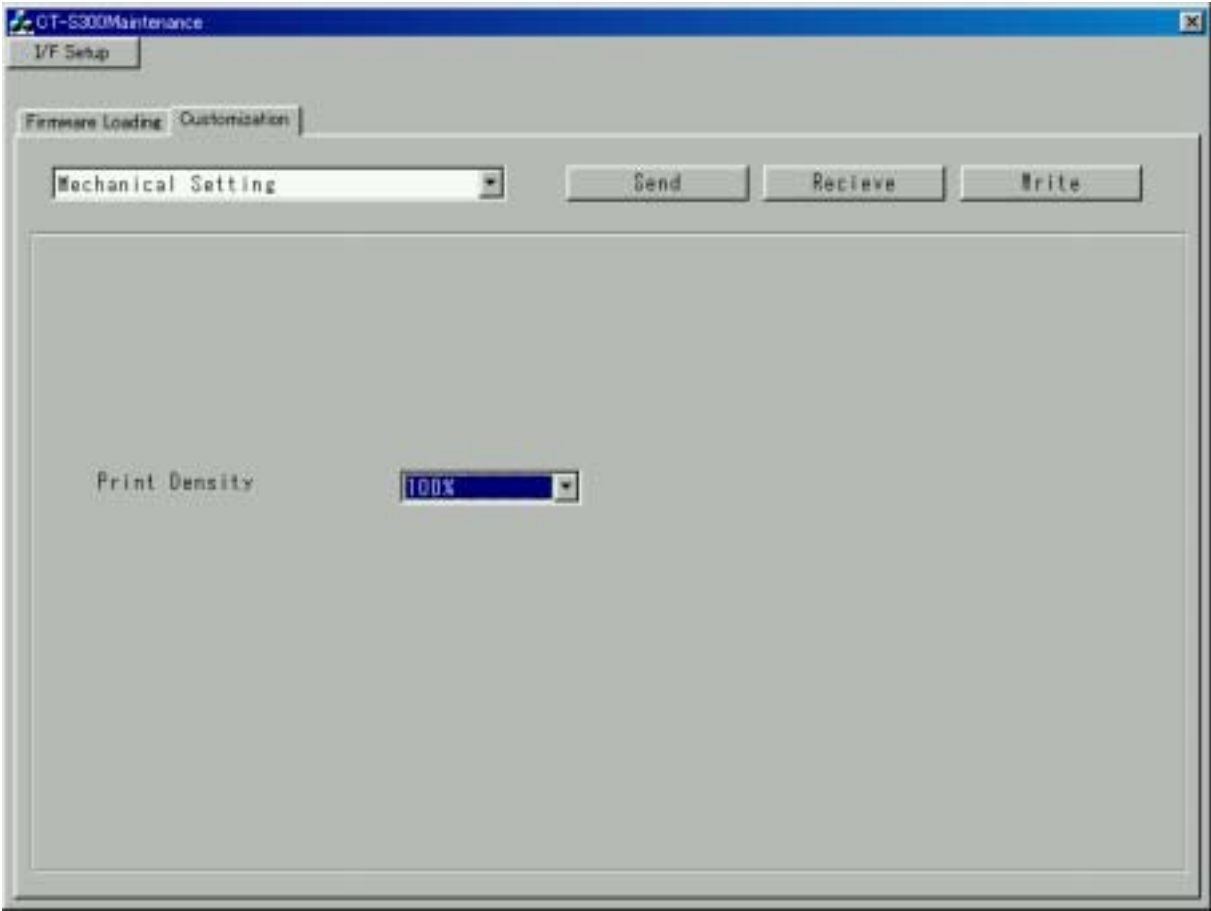
4.3 Interface setting



If DIP switch 1 is OFF, this setting can be effective.

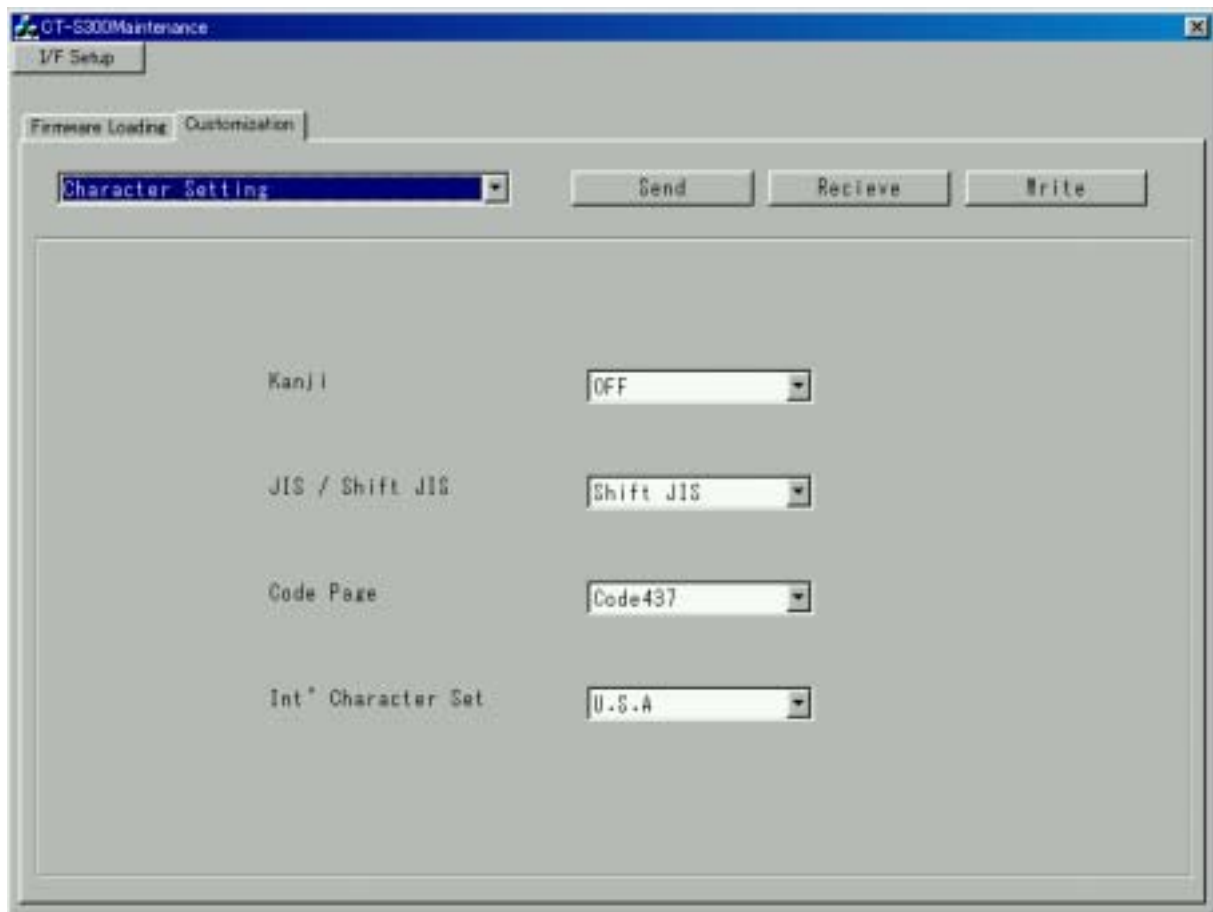
After changed condition is written to printer, this software will not communicate with printer properly.

4.4 Mechanism Setting



Print Density: Please adjust the density if printing results is light or too dark.

4.5 Character Setting



- | | |
|-----------------------------|--|
| Kanji: | Keep OFF |
| JIS / Shift JIS: | Do not change |
| Code Page: | Choose the code page you want to use. |
| Int'l Character Set: | Choose the international character set you want to use. |

4.6 Details of memory switches

Switch No.	Item name	0 Off	1 On	Function
MSW1-1	Power ON info	Send	Not send	Send status data at power on or not
MSW1-2	Buffer Size	4K bytes	45 bytes	Receive buffer size
MSW1-3	Busy Condition	Full/Err	Full	The condition to output Busy signal
MSW1-4	Receive Error	Print "?"	No Print	Print "?" at data receive error or not
MSW1-5	CR mode	Ignored	LF	Valid/invalid of CR code
MSW1-6	Reserved	Fixed	-	
MSW1-7	DSR Signal	Invalid	Valid	Use 6 Pin for reset signal or not
MSW1-8	Init Signal	Invalid	Valid	Use 25 Pin for reset signal or not
MSW2-1	Reserved	-	Fixed	
MSW2-2	Auto Cutter	Invalid	Valid	Auto cutter function enable/disable
MSW2-3	Spool Print	Invalid	Valid	The choice of print data spooling
MSW2-4	Full Col Print	CBM	EPSON	Spec of data handling at full column
MSW2-5	Resume aft PE	Next	Top	Transaction after cover close or PE
MSW2-6	Paper Width	80mm	58mm	Choice of paper width
MSW2-7	Reserved	Fixed	-	Spec of DLE DC4 fn=2 command
MSW2-8	No use	Fixed	-	
MSW3-1	Resume Ctrr Err	Feed S/W	Command	The way to resume from cutter motor lock error
MSW3-2	Resume Open Err	Close	Command	The way to resume from cover open error
MSW3-3	Parallel 31 Pin	Valid	Invalid	use Parallel 31 pin for reset signal or not
MSW3-4	Reserved	Fixed	-	Type of paper
MSW3-5	Column Number	48/36	42/30	Number of columns
MSW3-6	No use	Fixed	-	
MSW3-7	CBM1000 mode	Invalid	Valid	Compatibility with CBM1000 unique function
MSW3-8	Open w/Printing	Auto	Manual	The way to resume from cover open during printing