

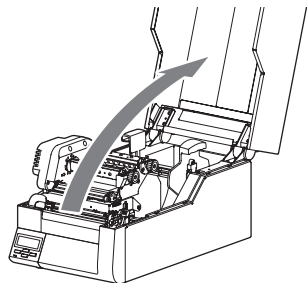
## CL-E700 SERIES AUTO-CUTTER INSTALLATION GUIDE FOR SERVICE REPRESENTATIVES

### ⚠ Caution

This document is intended for use by service representatives. Installation of the auto-cutter will be performed by a service representative, so please contact your supplier for assistance.

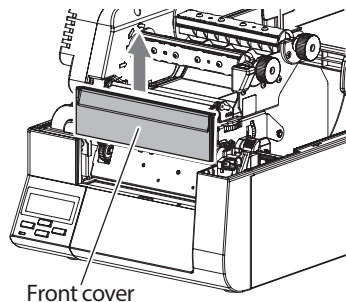
- 1 Check to make sure that the printer's power switch is turned off, then disconnect the power cord.

- 2 Open the top cover.



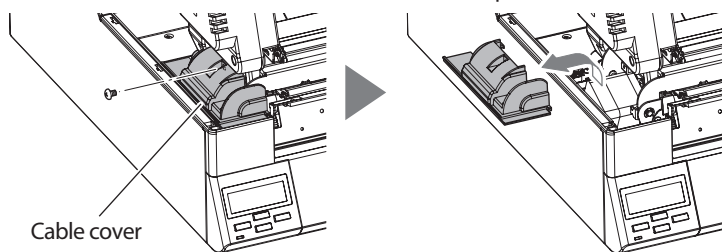
- 3 Lift and remove the front cover from the printer.

**Note** Keep the removed cover in a safe place, because it is used when the auto-cutter has been removed.



Front cover

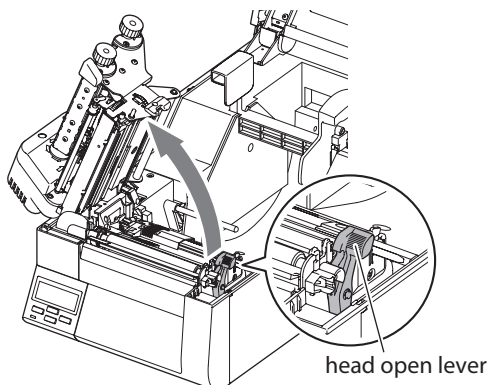
- 4 Remove the screw (1 screw) fastening the cable cover, and then lift and remove the cable cover. Take care that the screw does not fall inside the printer chassis.



Cable cover

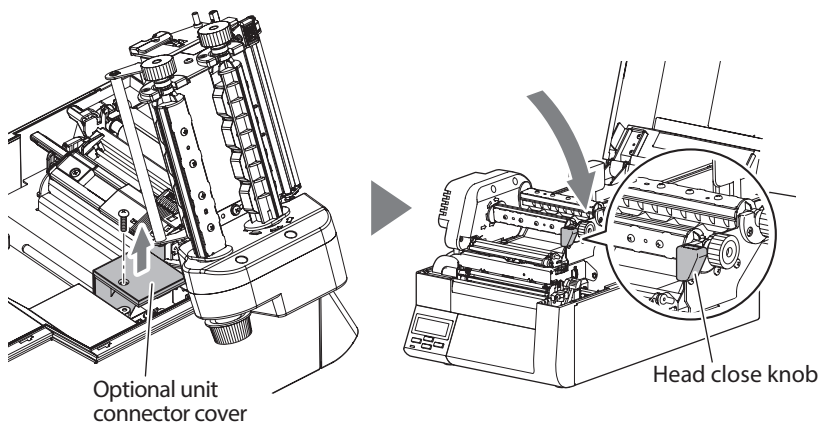
↓ Continued below

- 5 Push the head open lever to release the head unit.



head open lever

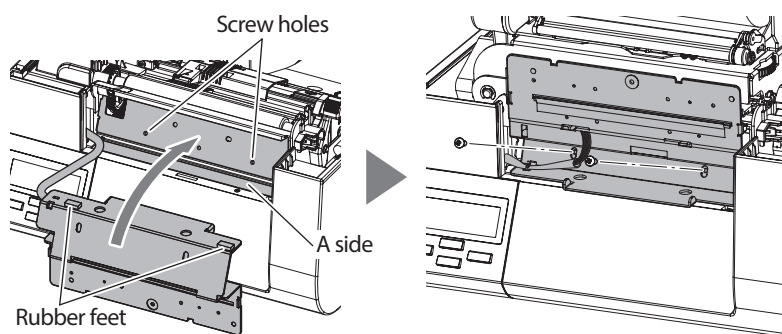
- 6 Remove the screw (1 screw) fastening the optional unit connector cover, and then remove the optional unit connector cover. And then, push the head close knob to lower and lock the head unit.



Optional unit connector cover

Head close knob

- 7 Attach the rubber feet (2 locations) at the L-shaped bend portion of the plate on the cutter stand unit to the plate (A side) on the printer, and then align the screw holes. Secure the cutter stand unit using the attached screws (2 screws).



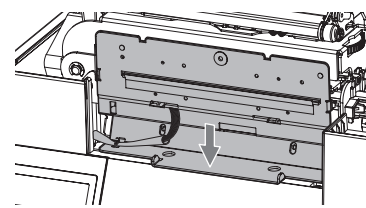
Screw holes

A side

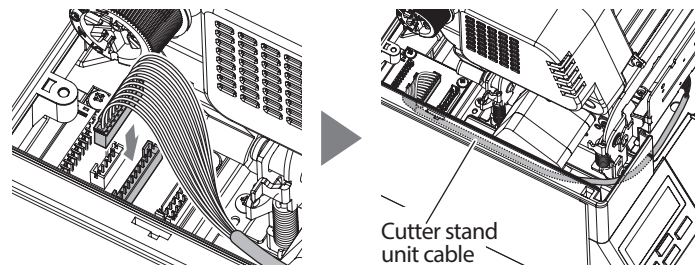
Rubber feet

### Note

To prevent the cutter stand unit from being attached in a tilted position, fix it by pressing it against the underside.



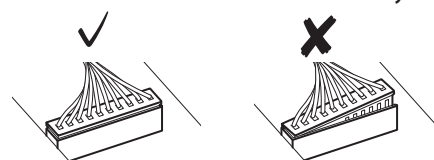
- 8 Plug the connector of the cutter stand unit cable into the optional connector on the printer. Feed the cable so that it lies along the printer's case.



Cutter stand unit cable

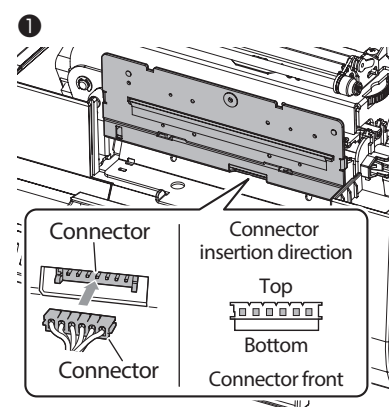
### Note

Make sure that the connector is inserted all the way in.



- 9 Attach the cutter unit to the printer.

- 1 Plug the connector of the cutter unit cable into the connector of the cutter stand unit cable.
- 2 Install the cutter unit by aligning the pins (2 locations) on the cutter stand unit with the alignment holes (2 locations) on the bottom of the cutter unit.
- 3 Secure the cutter unit by using the screw. Take care that the cutter unit does not pinch the cable.



Connector

Connector insertion direction

Connector

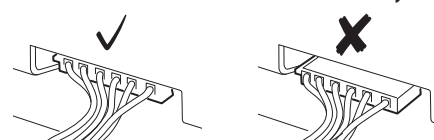
Top

Bottom

Connector front

### Note

Make sure that the connector is inserted all the way in.



↓ Continued below

- 10 Reinstall the cable cover and the optional unit connector cover on the printer. To reinstall the cable cover and optional unit connector cover, follow the removal steps in reverse order. Take care that the covers do not pinch the cable.

### Note

Be very careful as the motor may be hot.

- 11 Close the top cover.



- 12 Connect the power cord and turn on the power switch of the printer.

### Note

**Removing the cutter unit**

To remove the cutter unit from the printer, follow the installation steps in reverse order. If the screws that fasten the cutter unit are removed, the unit may fall from the printer, so hold the cutter unit with your hand while loosening the fastening screws.