

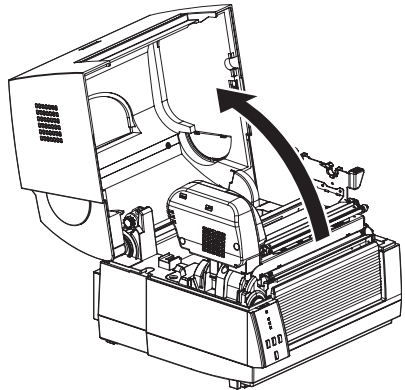
CL-S6621 AUTO-CUTTER INSTALLATION GUIDE
FOR SERVICE REPRESENTATIVES

⚠ Caution

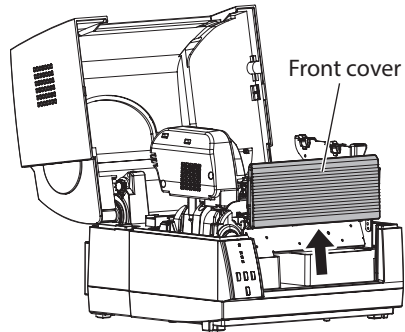
This document is intended for use by service representatives. Installation of the auto-cutter will be performed by a service representative, so please contact your supplier for assistance.

Installing the cutter stand unit

- 1 Check to make sure that the printer's power switch is turned off, then disconnect the power cord.
- 2 Open the top cover.

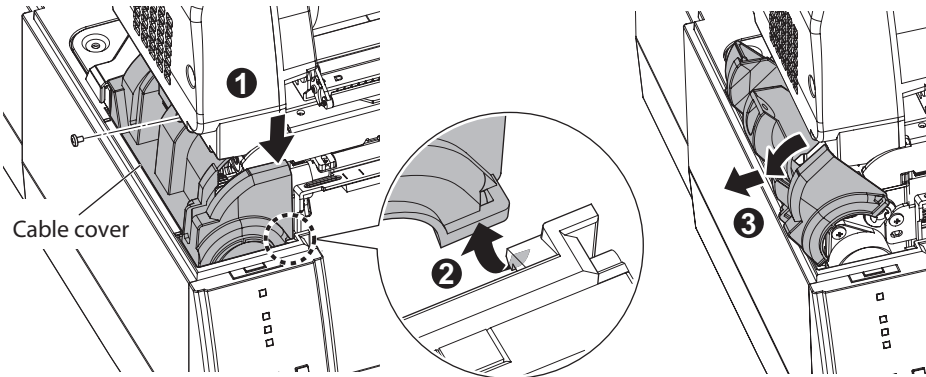


- 3 Lift and remove the front cover from the printer. (Keep the removed cover in a safe place, because it is used when the auto cutter has been removed.)

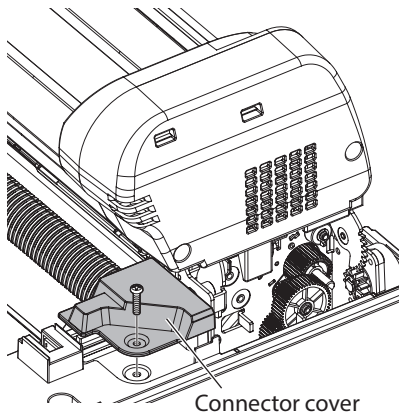


↓ Continued below

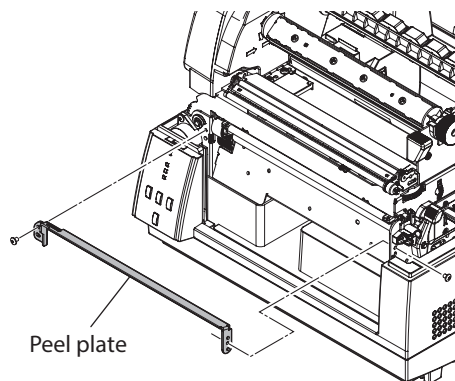
- 4 Remove the screw (1) fastening the cable cover, and push down the section indicated by the arrow (1). While holding the section down, push inward (toward the rear of the machine) to release (2), and then lift and remove the cable cover (3). Take care that the screw does not fall inside the printer chassis.



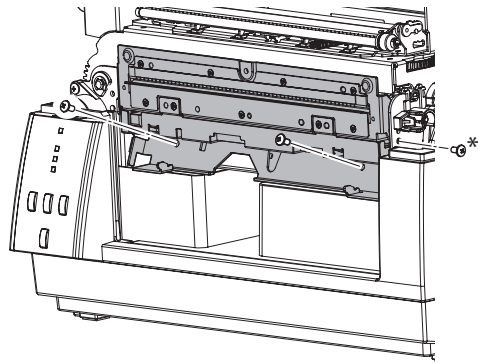
- 5 Remove the screw (1) fastening the optional unit connector cover, and then remove the optional unit connector cover.



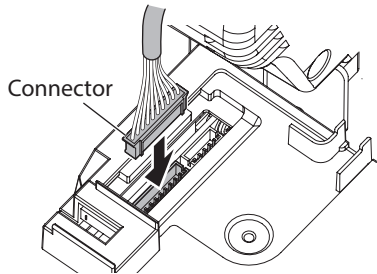
- 6 Remove the screws (2) holding the peel plate in place and then remove the peel plate.



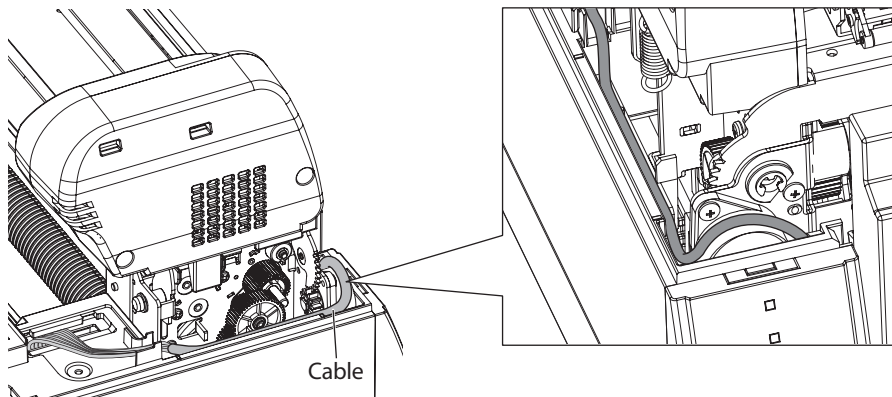
- 7 Line up the pins (2) on the back of the cutter stand unit with the boss holes on the printer, and fasten them in place using the included screws (2).
- * Use the M3×4 binding head machine screw used to hold the peeling plate in place to secure it on the side.



- 8 Plug the connector of the cutter-stand-unit cable into the optional connector on the printer.



- 9 Feed the cable, in 8, so that it lies along the printer's case. Push the cable down into the main unit, along the inner wall. When replacing the connector cover and the cable cover, take care that the covers do not pinch the cable.

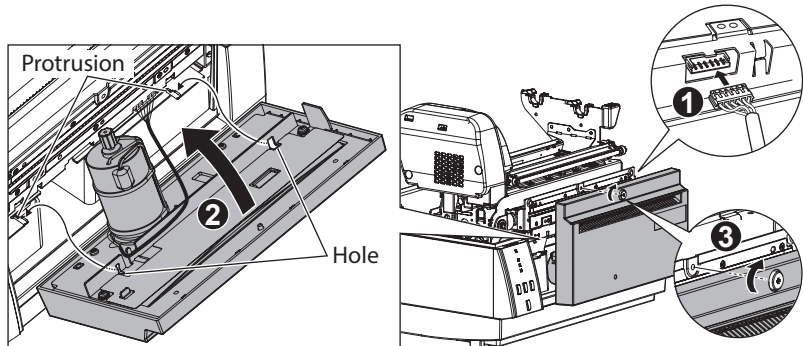


Installing the cutter unit

- 10 Plug the connector of the cutter-unit cable into the connector on the cutter stand unit. (1)

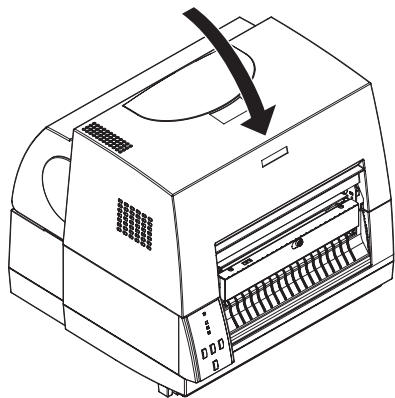
↓ Continued below

- 11 Align the holes (2) on the bottom of the cutter unit with the protrusions (2) on the cutter stand unit (2), and then fasten the slotted head screw on the cutter unit with a flat-blade screwdriver (3). Take care that the cutter unit does not pinch the cable.



- 12 After the cutter unit is installed, reinstall the cable cover and the optional unit connector cover on the printer. To reinstall the cable cover and connector cover, follow the removal steps in reverse order.

Note Be very careful as the motor may be hot.



- 13 Close the top cover.

- 14 Connect the power cord and turn on the power switch of the printer.

Note Removing the cutter unit

To remove the cutter unit from the printer, follow the installation steps in reverse order. Hold the end of the cutter unit by your hand in order that the cutter unit does not fall from the printer when removing the fastening screw.

CITIZEN SYSTEMS AMERICA CORPORATION

1411 West 190th Street, Suite 675
Gardena, CA 90248
Tel: (310) 781-1460
Fax: (310) 781-9152
<http://www.citizen-systems.com>

CITIZEN SYSTEMS JAPAN CO., LTD.

6-1-12, Tanashi-cho, Nishi-Tokyo-shi
Tokyo, 188-8511, Japan
Tel: +81 (0) 42 468 4608
Fax: +81 (0) 42 468 4687
<http://www.citizen-systems.co.jp>

CITIZEN is a registered trademark of CITIZEN WATCH CO., Japan.
CITIZEN es una marca registrada de CITIZEN WATCH CO., Japón.
Copyright © 2016 by CITIZEN SYSTEMS JAPAN CO., LTD.

CITIZEN SYSTEMS EUROPE GmbH

Otto-Hirsch-Brücken 17
70329 Stuttgart
Germany
Tel: +49 (0) 711 49032-0
Fax: +49 (0) 711 49032-45
<http://www.citizen-europe.com>

Elizabeth House, 56-60 London Road
Staines-Upón-Thames, TW18 4HF
United Kingdom
Tel: +44 (0) 20 8893 1900
Fax: +44 (0) 20 8893 0080