

CITIZEN

CT-S280 Virtual COM Driver Installation Guide

Sep 12, 2022

CITIZEN SYSTEMS JAPAN CO., LTD.

Caution

- (1) You are hereby notified that any dissemination, distribution or copying of this document without written consent is strictly prohibited.
- (2) The contents of this document are subject to change without prior notice.
- (3) We tried to ensure the content of this document but if you find any mistakes, please let us know.
- (4) Regardless of article (3), we cannot be responsible for any damages/influences caused by the use of this driver.
- (5) If you do not agree any of above, you are not allowed to use the driver.

Trade marks

Microsoft, Windows 2000, Windows XP, Windows Server 2003, Windows Vista, Windows 7, Windows8, Windows8.1, Windows10, Windows11, Visual Basic, Visual C++, Visual C#, .Net, Microsoft Word, Microsoft Access and TrueType are trademarks of Microsoft Corporation.

All other company names or product names are the trademarks or registered trademarks of their respective holders.

CITIZEN is a registered trademark of Citizen Watch Co., Ltd.

1. Operating systems

This installer is dedicated to install CT-S280 Virtual COM driver.

Install this driver prior to use CT-S280 USB interface model.

This installer works for following operating systems

- Microsoft Windows XP

- Microsoft Windows Vista

- Microsoft Windows 7

- Microsoft Windows 8, 8.1

- Microsoft Windows 10

- Microsoft Windows 11

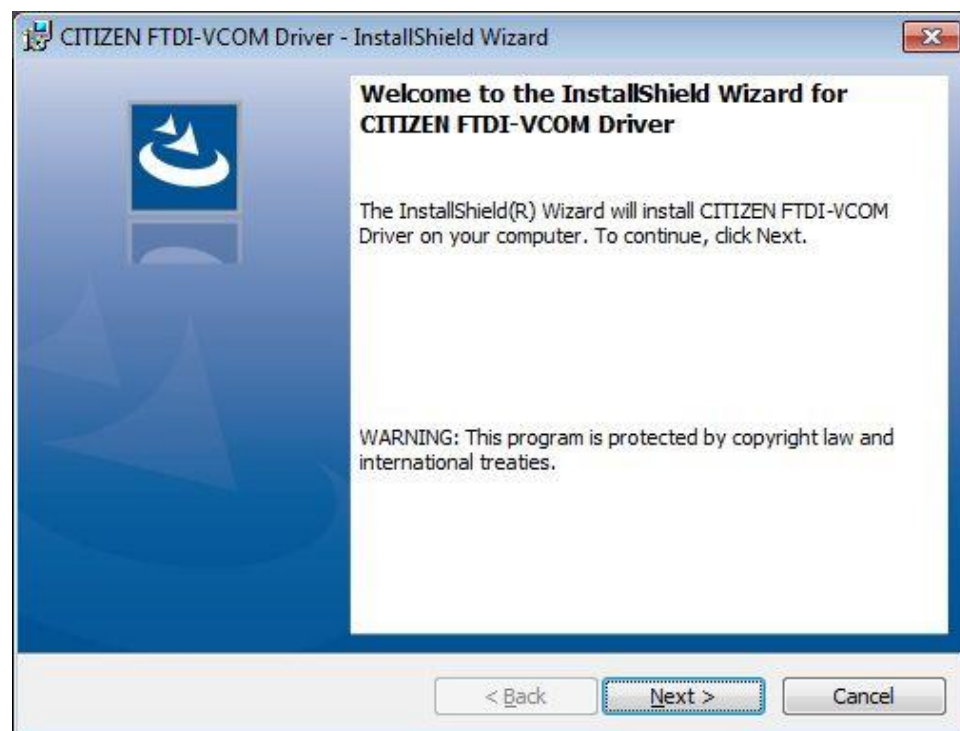
- Derived OS from the above such as Server OS

It is not necessary to think about 32bit/64bit because installer automatically detects it.

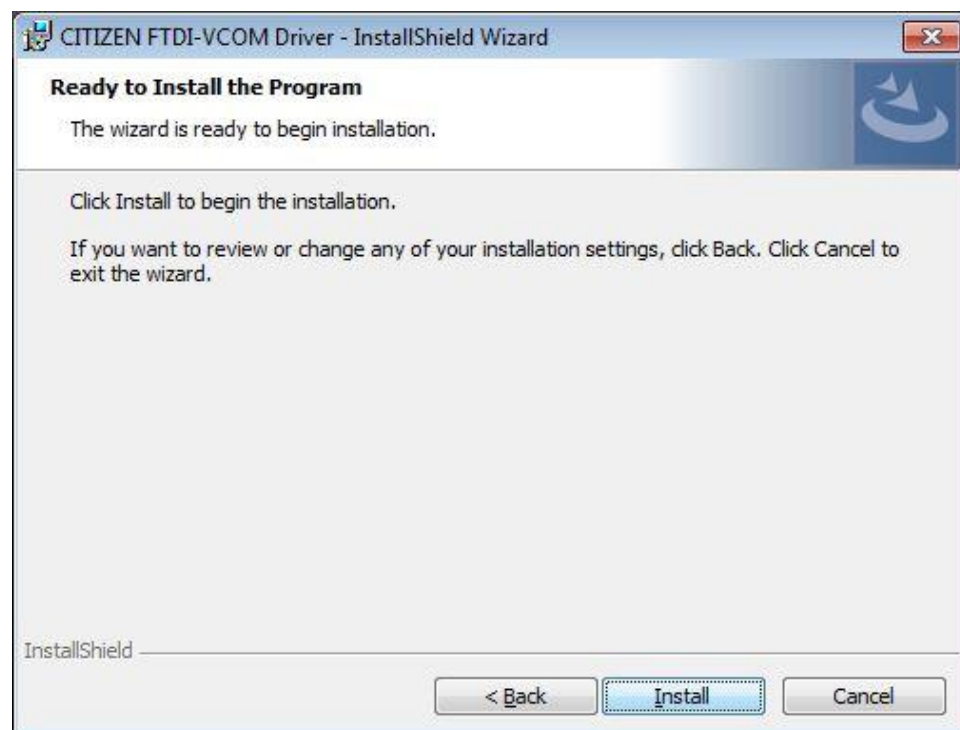
2. Installation procedure

Do not connect the CT-S280 to a PC and turn off the power.

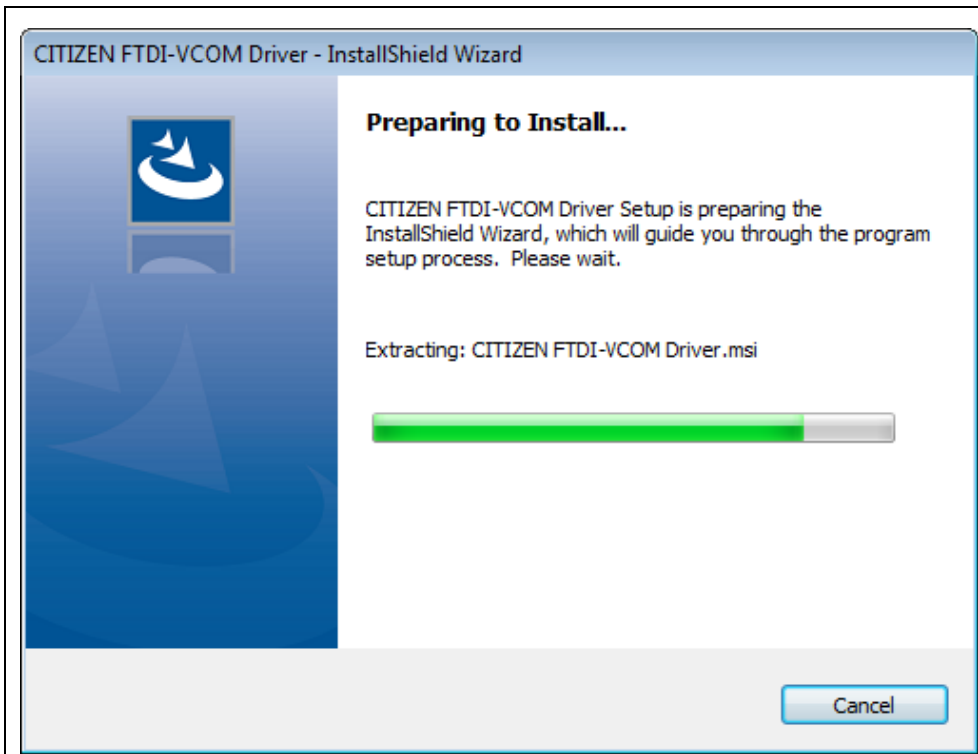
Execute the "CITIZEN FTDI-VCOM Driver J.exe" file.



Press "Next"



Press "Install".



Installation preparations will begin.

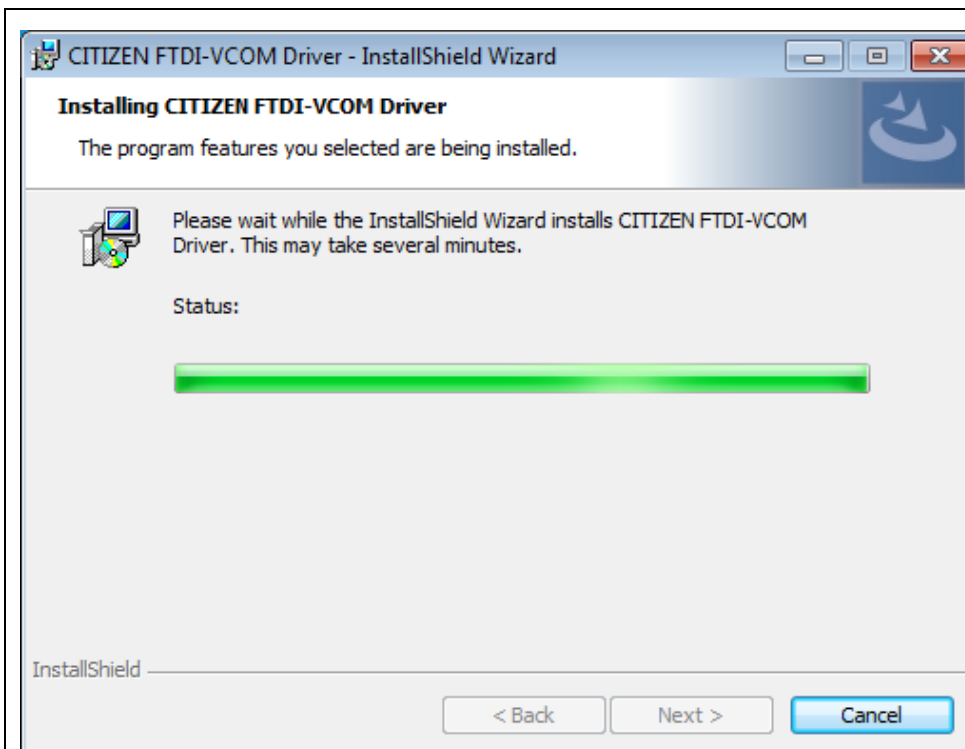
To cancel the installation, press Cancel.

(Drivers are not installed at this stage)

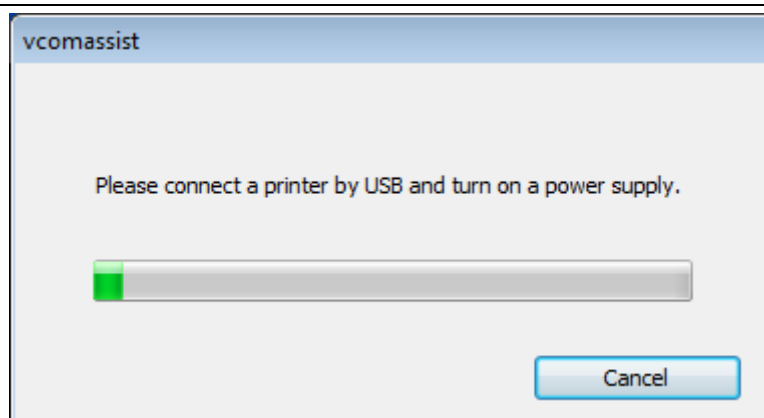


If the left window appears, continue the installation.

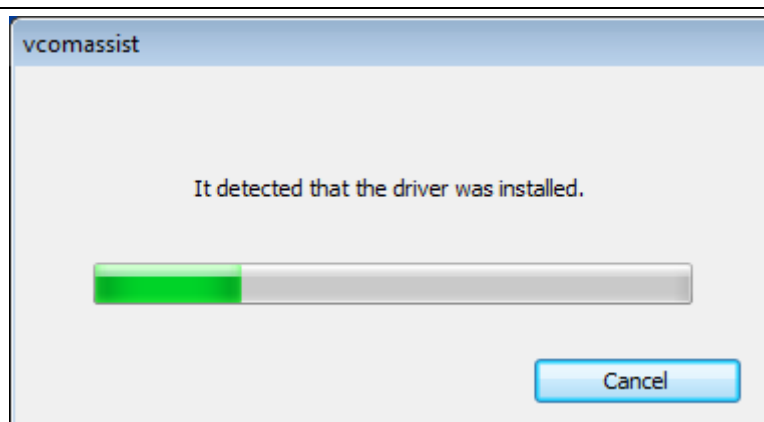
If the same window appears again, continue the installation again.



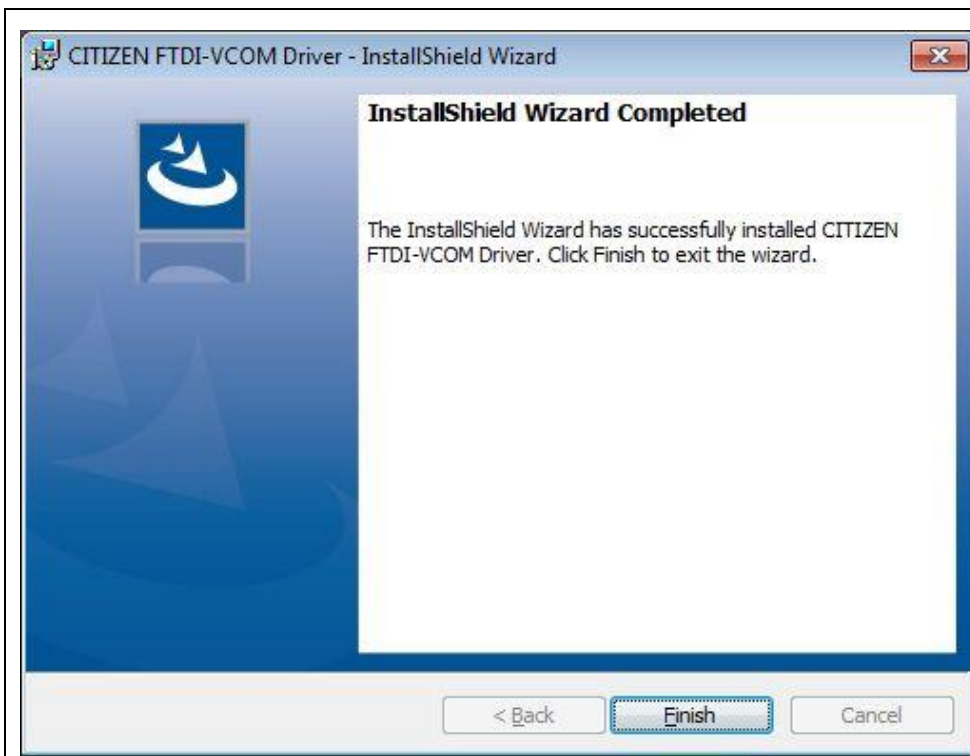
Installation will start.



When the window on the left appears, connect CT-S280 to PC and turn it on.
(If the installation is canceled at this point, please uninstall the program.)



After confirming the connection with the printer, install the USB virtual COM port driver.

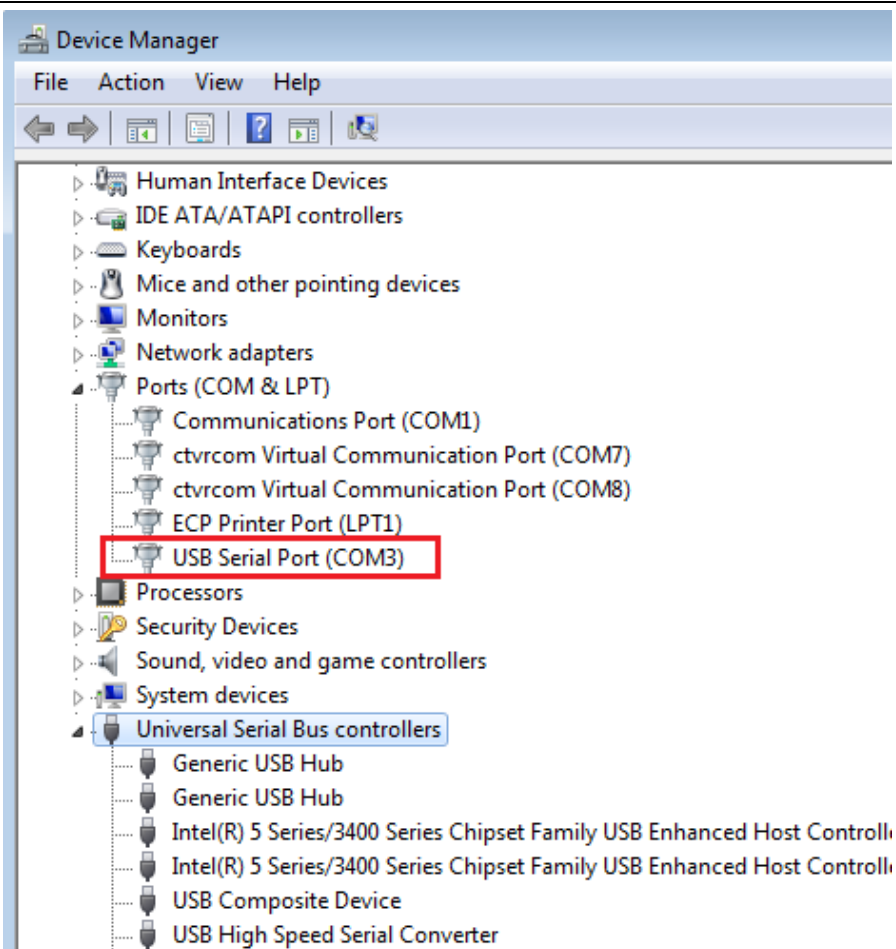


When the left window appears, installation of the virtual COM port driver is complete.

If necessary, the Windows printer driver must be installed separately. In that case, please select the COM port number specified in "USB Serial Port (COM*)" for the output COM port. For how to check the COM port, please refer to "2. How to check the port". If you want to change the port number arbitrarily, please refer to "3. Changing the port".

(Make sure that the printer is connected to the PC and the power is turned on.)

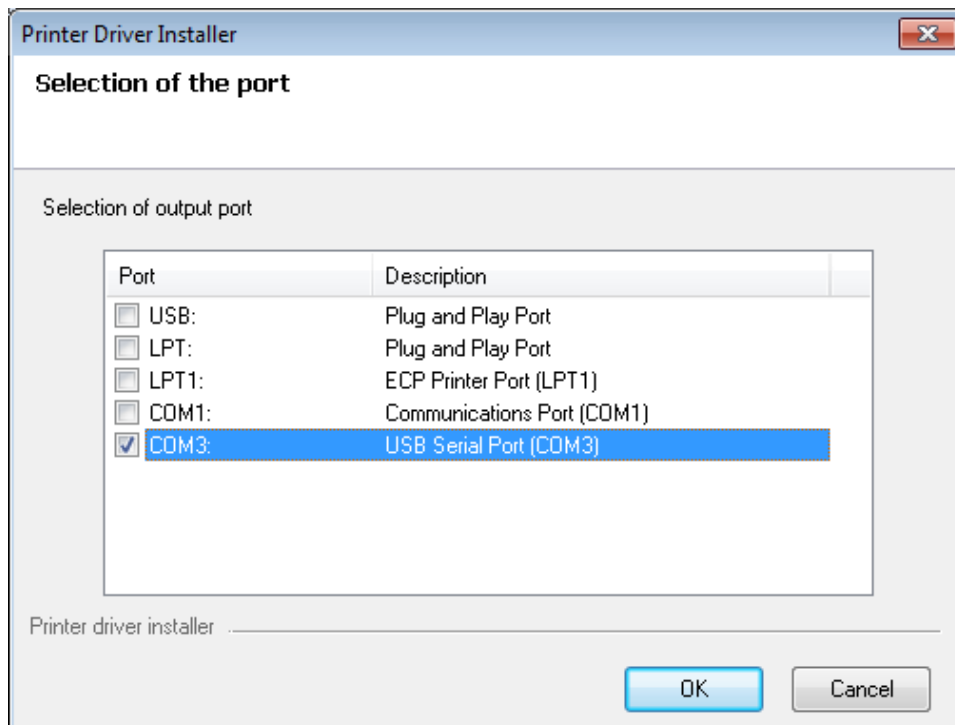
3. How to check the port



Open Device Manager and check Ports settings.
(with the printer connected)

"COM*" in USB Serial Port
(COM*) is the port number.

The sample screen on the left
is COM3.

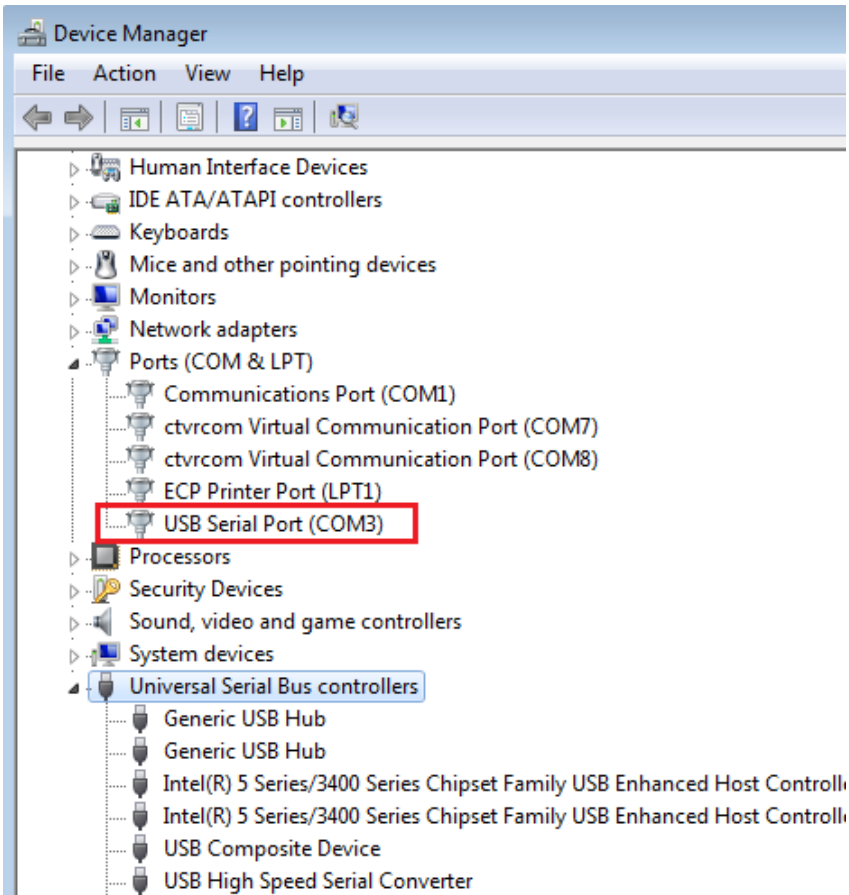


When the printer driver
installer is executed, the port
selection screen will be the
screen on the left.

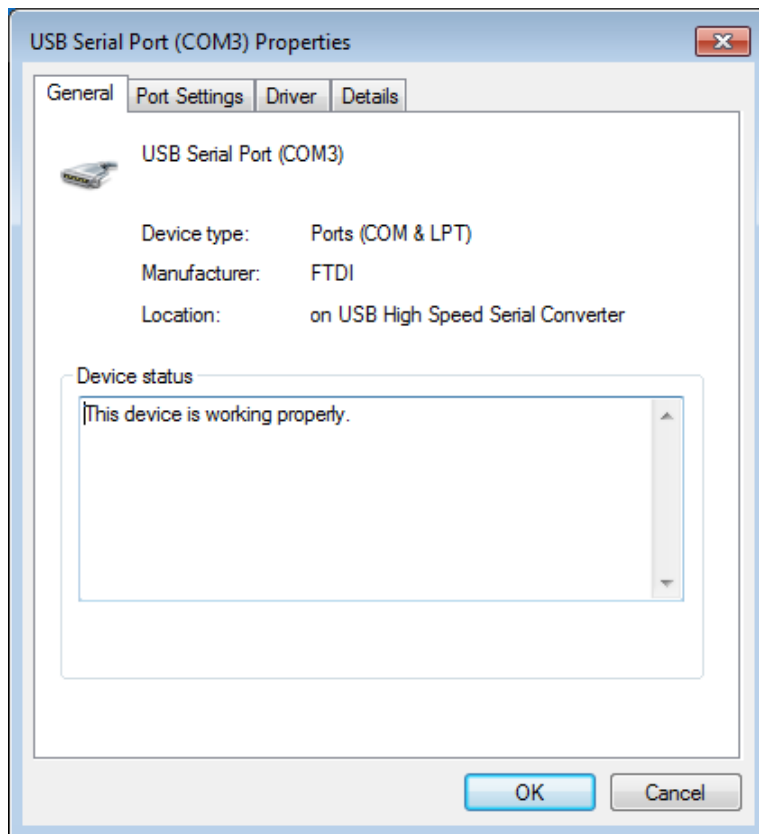
In this case, check the port
described as "USB Serial Port
(COM*)" in the description
column.

4. Changing the port

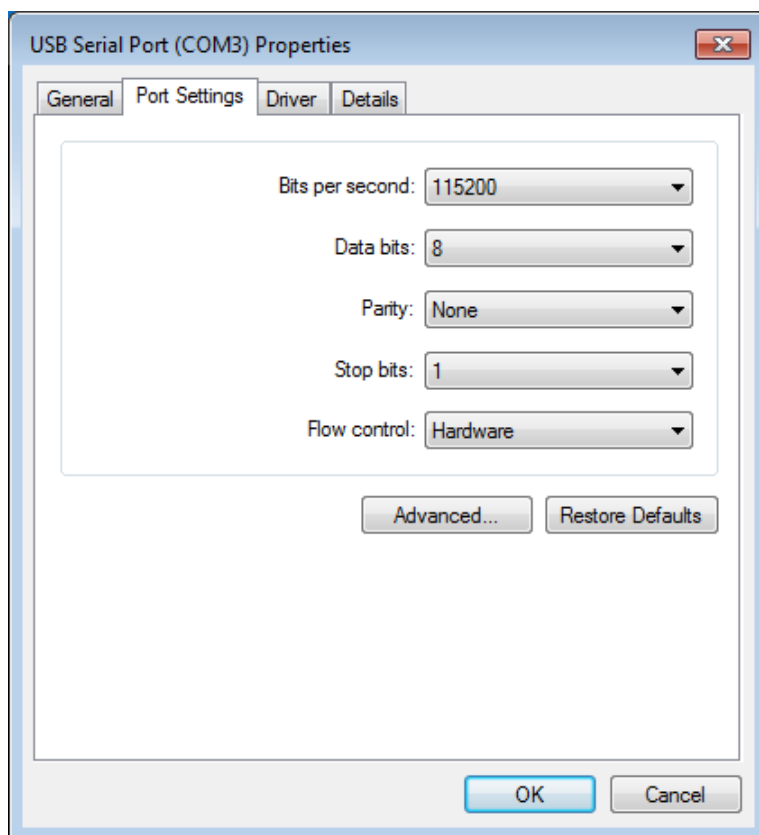
The COM port is 3 by default, but the method to change the port freely is as follows.



Select USB Serial Port in Device Manager and right-click. Select a property from the dropdown list.



Click the Port Settings tab.



Press Advanced.

Advanced Settings for COM3

COM Port Number: COM3

OK

Cancel

Defaults

USB Transfer Sizes

Select lower settings to correct performance problems at low baud rates.

Select higher settings for faster performance.

Receive (Bytes): 4096

Transmit (Bytes): 4096

BM Options

Select lower settings to correct response problems.

Latency Timer (msec): 16

Timeouts

Minimum Read Timeout (msec): 0

Minimum Write Timeout (msec): 0

Miscellaneous Options

Serial Enumerator ☒

Serial Printer ☐

Cancel If Power Off ☐

Event On Surprise Removal ☐

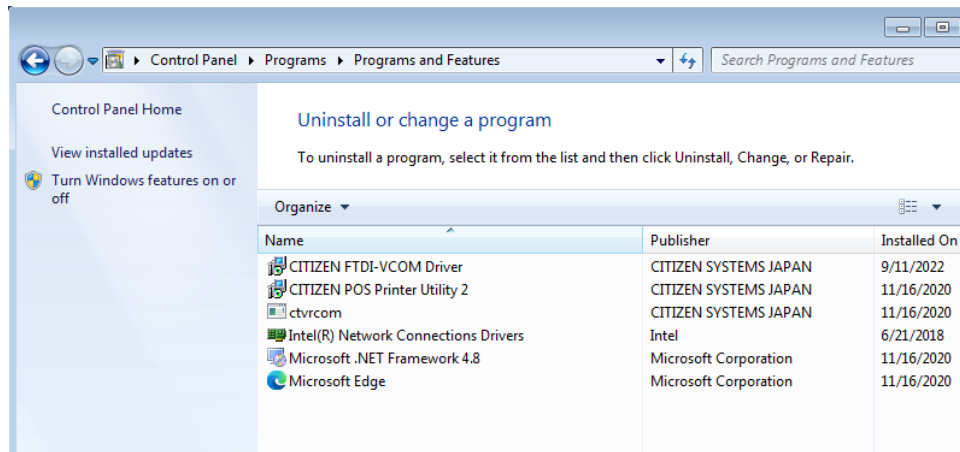
Set RTS On Close ☐

Disable Modem Ctrl At Startup ☐

You can select the number you want to change in COM Port Number. Depending on the PC environment, please note that it is not always possible to change.

Please do not change other items.

5. Uninstall



CITIZENFTDI-VCOM Driver to uninstall or change a program has been added, please execute and delete it.