

CBM Windows Driver Guide

Japan CBM Corporation

5-68-10 Nakano, Nakano-Ku, Tokyo 169-0001 JAPAN

Tel 81-3-5345-7540

Fax 81-3-5345-7541

info-sys@jcbm.co.jp

<http://www.jcbm.co.jp/eng/printer/>

Revision history

Revision 3.46	Oct. 10, 2000	Released for public
Revision 3.47	Nov. 7, 2000	CBM262 driver is corrected.
Revision 3.48	Feb. 28, 2001	Command path through function is added. Long page size problem on NT driver is corrected.
Revision 3.49	Mar. 14, 2001	The problem with "7.5 cpi [Ext.]" size 12 is fixed.
Revision 3.50	May 1, 2001	NT/2000 barcode problem is fixed.
Revision 3.61	July 18, 2001	Problem of white gap in TrueType font is solved. Graphic printing method for CBM1000/IDP3240 is changed to raster graphics. Following drivers are added. "IDP342x/355x/3545/3546 ESC/POS mode" "CBM231 Partial cut" "BD2-2860" "CBM253 (Label) cut" Graphic function is removed from CBM820 driver.
Revision 3.62	July 27, 2001	Custom size form can be added on NT/2000 driver.
Revision 3.63	Nov 20, 2001	Following drivers are added. "CBM1000 Label (Cut)" "CBM270 Label (Cut)" "CBM291 Partial Cut" "CBM293 Partial Cut" "BD2-2820 Full/Partial/No Cut" Minimum length of User Define paper is changed from 6 inch to 1 inch.
Revision 3.64	Jan 28, 2002	Cut problem on CBM253 (Label) for Win9x is solved. Additional font sizes are added for CBM253 (Label) Compressed printing drivers for CBM1000/IDP3240 are added.
Revision 3.65	March 4, 2002	58mm paper width is added to CBM1000 Label driver CBM231 and PPU231 graphic problem is solved.
Revision 3.66	July 18, 2002	Problem of CBM820 Text printing on NT driver is solved. Driver for CBM1000II is added. (Red color printing font) CBM1000(II) Label driver with small line pitch is added. CBM820 Graphic with special EPROM is added. Barcode problem in NT driver is fixed. Driver for CMP-10 is added.
Revision 3.66b	Oct 18, 2002	IDP3210/IDP3221 graphic printing problem is corrected.
Revision 3.66c	Nov 22, 2002	Hang-up problem by IDP355x ESC/POS NT driver is corrected.
Revision 3.66d	Dec 10, 2002	Wrong character assignment problem by IDP3210 NT driver is corrected.
Revision 3.66e	June 3, 2003	CT-S300 driver is added.
Revision 3.66f	Aug 6, 2003	USB driver is added.
Revision 3.66g	Oct 14, 2003	Inf files for NT/2000/XP is changed for PnP function.
Revision 3.67	Jan 15, 2003	CT-S300 driver is optimised for its unique function. (Font C etc) PPU-700 driver is added. BD2-1220 driver is added.

1. Operating system

CBM drivers are designed to work on any of following operating systems.

Microsoft Windows 95

Microsoft Windows 98

Microsoft Windows ME

Microsoft Windows NT 4.0

Microsoft Windows 2000

Microsoft Windows XP

2. Printer models and drivers.

Drivers for CBM printers are listed as follows.

Thermal printer

Model	Remarks
CBM1000 Partial Cut	58mm/80mm paper width can be used.
CBM1000 No Cut	Two different column numbers can be used.
CBM1000 Label	58mm/80mm paper width can be used.
CBM1000 Label Cut	Two different column numbers can be used.
CBM1000II Partial Cut	58mm/80mm paper width can be used.
CBM1000II No Cut	Two different column numbers can be used.
CBM1000II Label	58mm/80mm paper width can be used.
CBM1000II Label Cut	Two different column numbers can be used.
CBM1000 Reduce	A4 width data is printed in 1/3 reduced size.
CBM1000 Reduce (Cut)	Graphic printing only
CBM1000II Reduce	A4 width data is printed in 1/3 reduced size.
CBM1000II Reduce (Cut)	Graphic printing only
CBM230 No Cut	No cutter
CBM231 Full Cut	
CBM231 Partial Cut	
CBM232 No Cut	No cutter
CBM233 Full Cut	
CBM233 Partial Cut	
CBM253 (Paper)	
CBM253 (Label)	
CBM253 (Label) Cut	
CBM262 Partial Cut	Two station (Receipt/Journal)
CBM262 No Cut	Two station (Receipt/Journal)
CBM270	No cutter
CBM290 No Cut	
CBM291 Full Cut	
CBM291 Partial Cut	
CBM292 No Cut	No cutter
CBM293 Full Cut	
CBM293 Partial Cut	
CMP10	Mobile printer / No cutter
CT-S300 Partial Cut	
CT-S300 No Cut	
IDP3210 Partial Cut	6 dot/mm resolution
IDP3210 No Cut	6 dot/mm resolution

IDP3221 Partial Cut	180 DPI resolution
IDP3221 No Cut	180 DPI resolution
IDP3240 Partial Cut	
IDP3240 No Cut	
IDP3240 Reduce IDP3240 Reduce (Cut)	A4 width data is printed in 1/2 reduced size. Graphic printing only
PPU231	Presenter is supported.
PPU-700	Presenter is supported.
BD-1220 Full/Partial/No Cut	Control board for LT122x/132x
BD-2820 Full/Partial/No Cut	Control board for LT282
BD-2860 Full/Partial/No Cut	Control board for LT286

Impact printers

Model	Remarks
CBM-710	No cutter / No drawer
CBM-720	No drawer
CBM-750	No drawer
CBM-820	Slip printer / No red color printing
CBM-820 Graphic	Slip printer / No red color printing Graphic function for special firmware
CBM-910(24col)	No cutter / No drawer No Red color printing
CBM-910(40col)	No cutter / No drawer No Red color printing
CBM-920(24col)	No cutter / No drawer No Red color printing
CBM-920(40col)	No cutter / No drawer No Red color printing
IDP3110(24col)	No cutter / No drawer No Red color printing
IDP3110(40col)	No cutter / No drawer No Red color printing
IDP3111(24col)	No cutter / No drawer No Red color printing
IDP3111(40col)	No cutter / No drawer No Red color printing
IDP3420	CBM mode / No cutter
IDP3420 (ESC/POS)	ESC/POS mode + Graphic / No cutter
IDP3421	CBM mode
IDP3421 (ESC/POS)	ESC/POS mode + Graphic
IDP3423	CBM mode
IDP3423 (ESC/POS)	ESC/POS mode + Graphic
IDP3530	No cutter
IDP3540	No cutter
IDP3541	
IDP3545	CBM mode / No cutter
IDP3545 (ESC/POS)	ESC/POS mode / No cutter
IDP3546	CBM mode
IDP3546 (ESC/POS)	ESC/POS mode
IDP3550	CBM mode / No cutter
IDP3550 (ESC/POS)	ESC/POS mode / No cutter
IDP3551	CBM mode
IDP3551 (ESC/POS)	ESC/POS mode
IDP460	No cutter

[Note]

- * If your printer has auto cutter and you do not want to use the auto cutter function, please choose the model name with "No cut" or No cutter model. If you choose the model with cutter function, it cuts the paper at end of each page. However, cut style depends on the specification of the cutter.
- * IDP3420 / 3421 / 3423, IDP3545 / 3546, IDP3550 / 3551 have emulation mode for CBM, Star and ESC/POS. We have drivers for CBM mode and drivers for ESC/POS mode.
- * Older dot matrix printers do not have connector for cash drawer.
- * Drivers for all thermal printers support graphic printing and drivers for impact printers except "342x ESC/POS mode" do not support graphic printing.

3. DIP switch setting of printer and Port setting of Windows

PRINTER: Please choose bigger size of buffer, if the printer allows you to choose it.

PRINTER: Please choose CR=CR only, if the printer allows you to choose it.

BOTH: Serial communication conditions (Handshake, Baud rate, Data length, Parity) have to correspond between printer side and Windows side.

BOTH: XON/XOFF is recommended for handshaking.

If you have strange results on serial interface model, please try as follows.

From the property page of printer driver,

Details --> Port Setting --> Advanced

Then disable "use FIFO buffers"

or make Receive Buffer/Transmit Buffer at lowest label.

4. Installing the driver

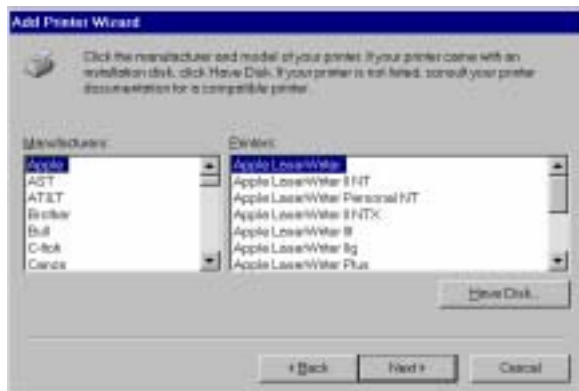
By executing the downloaded file, the several directories are made for each operating system. Make sure where drivers for your operating system are located.

Click **"Start"** button --> **"Setting"** --> **"Printer"**

(Or double-click **"My Computer"** --> **"Printer"**)

Then double-click **"Add Printer"** and follow the instructions.

When you are requested to choose manufacturer and model for the printer, please click **"Have Disk"** button



And specify the directory where you extracted the driver files. Then choose your printer after CBM printer models are listed.



And then follow the instructions again.

After the driver installation is finished, printer icon appears in Printer Windows and test page is printed. If anything is not printed, please check if you choose the correct port. If garbage characters are printed and you use the serial port, please check if correct baud rate is set.

5. Printer fonts

Following printer fonts can be selected by using Windows driver.

Printing by printer font is much faster than printing by Windows font. Therefore, we recommend using these printer fonts for faster printing.

Driver	Font	Font size
IDP3210	15 cpi	12 / 24
	15 cpi [Ext.]	
	7.5 cpi	12 / 24
	7.5 cpi [Ext.]	
	Control	12
IDP3221	10 cpi	12 / 24
	10 cpi [Ext.]	
	15 cpi	12 / 24
	15 cpi [Ext.]	
	20 cpi	12 / 24
	20 cpi [Ext.]	
	7.5 cpi	12 / 24
	7.5 cpi [Ext.]	
	Control	12
CBM1000 IDP3240	10 cpi	12 / 24
	10 cpi [Euro]	
	10 cpi [Ext.]	
	15 cpi	12 / 24
	15 cpi [Euro]	
	15 cpi [Ext.]	
	20 cpi	12 / 24
	20 cpi [Euro]	
	20 cpi [Ext.]	
	7.5 cpi	12 / 24
	7.5 cpi [Euro]	
	7.5 cpi [Ext.]	
	Control	12
CBM1000II	10 cpi	12 / 24
	10 cpi [Euro]	
	10 cpi [Ext.]	
	10 cpi (Red)	
	10 cpi (Red Euro)	
	10 cpi (Red Ext.)	
	15 cpi	12 / 24
	15 cpi [Euro]	
	15 cpi [Ext.]	
	15 cpi (Red)	
	15 cpi (Red Euro)	
	15 cpi (Red Ext.)	
	20 cpi	12 / 24
	20 cpi [Euro]	
	20 cpi [Ext.]	
	20 cpi (Red)	
	20 cpi (Red Euro)	
	20 cpi (Red Ext.)	

	7.5 cpi 7.5 cpi [Euro] 7.5 cpi [Ext.] 7.5 cpi (Red) 7.5 cpi (Red Euro) 7.5 cpi (Red Ext.)	12 / 24
	Control	12
CBM253 Label	10 cpi 10 cpi [Ext.]	8.5/ 12 / 17 / 24
	15 cpi 15 cpi [Ext.]	8.5 /12 / 17 / 24
	20 cpi 20 cpi [Ext.]	8.5 / 12 / 17/ 24
	7.5 cpi 7.5 cpi [Ext.]	8.5 / 12 / 17 /24
	Control	12
CBM270	10 cpi 10 cpi [Ext.] 10 cpi (Red) 10 cpi (Red Ext.)	12 / 24
	15 cpi 15 cpi [Ext.] 15 cpi (Red) 15 cpi (Red Ext.)	12 / 24
	20 cpi 20 cpi [Ext.] 20 cpi (Red) 20 cpi (Red Ext.)	12 / 24
	7.5 cpi 7.5 cpi [Ext.] 7.5 cpi (Red) 7.5 cpi (Red Ext.)	12 / 24
	Control	12
CMP-10	10 cpi	12 / 24
	15 cpi	12 / 24
	20 cpi	12 / 24
	7.5 cpi	12 / 24
	Control	12
CT-S300 PPU-700	10 cpi 10 cpi [Euro] 10 cpi [Ext.]	12 / 24
	13 cpi 13 cpi [Euro] 13 cpi [Ext.]	12 / 24
	15 cpi 15 cpi [Euro] 15 cpi [Ext.]	12 / 24
	20 cpi 20 cpi [Euro] 20 cpi [Ext.]	12 / 24
	25 cpi 25 cpi [Euro] 25 cpi [Ext.]	12 / 24

	7.5 cpi 7.5 cpi [Euro] 7.5 cpi [Ext.]	12 / 24
	Control	12
All other thermal printers	10 cpi 10 cpi [Ext.]	12 / 24
	15 cpi 15 cpi [Ext.]	12 / 24
	20 cpi 20 cpi [Ext.]	12 / 24
	7.5 cpi 7.5 cpi [Ext.]	12 / 24
	Control	12
IDP311x / CBM9xx 24 columns	13 cpi 13 cpi [Ext.]	12
	6.5 cpi 6.5 cpi [Ext.]	12
IDP311x / CBM9xx 40 columns	10.5 cpi 10.5 cpi [Ext.]	12
	21 cpi 21 cpi [Ext.]	12
IDP342x IDP355x	16 cpi 16 cpi [Euro] 16 cpi [Ext.]	12 24 – 342x only
	16 cpi (RED) 16 cpi (RED Euro) 16 cpi (RED Ext.)	12 24 – 342x only
	8 cpi 8 cpi [Euro] 8 cpi [Ext.]	12 24 – 342x only
	8 cpi (RED) 8 cpi (RED Euro) 8 cpi (RED Ext.)	12 24 – 342x only
	Control	12
CBM820	13.3 cpi 13.3 cpi [Euro] 13.3 cpi [Ext.]	12
	16 cpi 16 cpi [Euro] 16 cpi [Ext.]	12
	6.7 cpi 6.7 cpi [Euro] 6.7 cpi [Ext.]	12
	8 cpi 8 cpi [Euro] 8 cpi [Ext.]	12
	Control	12
All other impact printers	16 cpi 16 cpi [Ext.]	12
	16 cpi (RED) 16 cpi (RED Ext.)	12
	8 cpi 8 cpi [Ext.]	12

	8 cpi (RED)	12
	8 cpi (RED Ext.)	
	Control	12

[Note]

* The difference of "**xx cpi**", "**xx cpi [Euro]**" and "**xx cpi [Ext.]**" is characters/functions assigned to 80 ~ FF hex. The details of difference are as follows.

Font	Printer	80-9F(hex)	A0-FF(hex)
xxx cpi	CBM1000/CT-S300iDP3240/iDP342x/iDP355x/CBM820/PPU-700	Special function	Windows Code
	IDP311x/CBM9x0	No characters	Converted
	CMP-10	Windows code	Windows code
	Others	Special function	Converted
xxx cpi [Euro]	CBM1000/CT-S300/iDP3240/iDP342x/iDP355x/CBM820/PPU-700	Windows Code	Windows Code
xxx cpi [Ext.]	CBM1000/CT-S300/iDP3240/iDP342x/iDP355x/CBM820/PPU-700	Code Page 437	Code Page 437
	Others	Converted	Converted

Special function: Special functions are assigned.
(Refer to section 9 for the special functions.)

Windows Code: Characters from Windows code table are assigned.

No characters: No characters / No functions are assigned.

Converted: Characters from conversion table are assigned.
(Refer to next section for the conversion table.)

Code Page 437: Characters from code page 437 are assigned.

* Standard font and double width font are listed in different font name.

For example, "7.5 cpi" is double width font of "15 cpi".

* Font size 24 is double high font of font size 12.

* It is necessary to use Black/Red ink ribbon and proper printer to print red characters by "Red" color font for impact printers.

* It is necessary to use special paper to print Red font for thermal printers.

* If landscape (horizontal) orientation is selected, these fonts will not be printed.

* "Control" font is only for special functions and not for printing.

6. Character conversion table for 80 – FF (hex) characters

This is for “xx cpi”(A0-FF hex) and “xx cpi [Ext.]” (80-FF hex) for the printers except CBM1000 / CMP10 / CT-S300 / IDP3240 / IDP342x / IDP355x / CBM820 / PPU-700.

On some characters and some models, it is necessary to specify the international character setting by DIP switch to use this conversion table.

	Impact printers except IDP355x / 342x IDP3530 / 460 /		IDP3530 IDP460		Thermal printers except CBM1000 / 262 / CT-S300 IDP3221 / 3240 / PPU-700		IDP3221 CBM262
Character from Windows code	CBM(1)	International Character Setting	CBM(2)	International Character Setting	CP437	International Character Setting	CP850
Converted characters for each printer							
80	7F		7F		7F		D5
81	SP		SP		SP		SP
82	2C		2C		2C		2C
83	66*		66*		9F		9F
84	2C*		2C*		2C*		2C*
85	5F*		5F*		5F*		5F*
86	2B*		2B*		2B*		2B*
87	D8*		92*		XX		
88	5E*		5E		5E*		5E*
89	25*		25*		25*		25*
8A	53*		53*		53*		53*
8B	3C*		3C*		3C*		3C*
8C	43+45*		43+45*		43+45*		43+45*
8D	SP		SP		SP		SP
8E	SP		SP		SP		SP
8F	SP		SP		SP		SP
90	SP		SP		SP		SP
91	27*		27*		27*		27*
92	27*		27*		27*		27*
93	22*		22*		22*		22*
94	22*		22*		22*		22*
95	XX		C9		FA		FA
96	2D*		2D*		2D*		2D*
97	2D*		2D*		2D*		2D*
98	7E*		7E*		7E*		7E*
99	54+5D*		54+5D*		54+5D*		54+5D*
9A	73*		73*		73*		73*
9B	3E*		3E*		3E*		3E*
9C	63+65*		63+65*		63+65*		63+65*
9D	SP		SP		SP		SP
9E	SP		SP		SP		SP
9F	59*		59*		59*		59*
A0	SP		SP		SP		SP
A1	D7		7C*		AD		AD
A2	A8		XX		9B		9B
A3	A0		BD*		9C		9C
A4	24	Sweden/Norway	XX		24	Sweden/Norway	CF
A5	BA		59*		9D		9D
A6	7C		7C		7C		DD
A7	B2		5D	France	5D	France	F5
A8	XX		7E	France	XX		F9
A9	XX		XX		XX		B8
AA	B3		XX		A6		A6

AB	3C*		3C*		3C*		AE
AC	XX		E2*		AA		AA
AD	2E*		2E*		2E*		2E*
AE	XX		XX		XX		A9
AF	XX		XX		XX		EE
B0	B5		AE*		F9		FA
B1	AB		C4		F1		F1
B2	32*		D1		FD		FD
B3	33*		D2		33*		FC
B4	XX		XX		XX		EF
B5	A4		AB		E6		E6
B6	XX		XX		XX		F4
B7	XX		DD*		FA		FA
B8	2C*		2C*		2C*		2C*
B9	31*		D0		31*		FB
BA	30*		CF		30*		FA
BB	3E*		3E*		3E*		AF
BC	BB		CE		AC		AC
BD	B7		CD		AB		AB
BE	XX		XX		XX		F3
BF	D2		XX		A8		A8
C0	41*		41*		41*		B7
C1	41*		41*		41*		B5
C2	41*		41*		41*		B6
C3	BC		41*		41*		C7
C4	AE		5B	Germany	8E		8E
C5	D8		41*		8F		8F
C6	5B	Denmark/Norway	41+45*		92		92
C7	43*		5C	France	80		80
C8	45*		45*		45*		D4
C9	40	Swe / Nor / Den	45*		40	Swe / Nor / Den	90
CA	45*		45*		45*		D2
CB	45*		45*		45*		D3
CC	49*		49*		49*		DE
CD	49*		49*		49*		D6
CE	49*		49*		49*		D7
CF	49*		49*		49*		D8
D0	44*		44*		44*		D1
D1	D3		4E*		A5		A5
D2	4F*		4F*		4F*		E3
D3	4F*		4F*		4F*		E0
D4	4F*		4F*		4F*		E2
D5	4F*		4F*		4F*		E5
D6	AF		5C	Germany	99		99
D7	78*		78*		78*		9E
D8	5C	Denmark/Norway	4F*		5C	Denmark/Norway	9D
D9	55*		55*		55*		EB
DA	55*		55*		55*		E9
DB	55*		55*		55*		EA
DC	B0		5D	Germany	9A		9A
DD	59*		59*		59*		ED
DE	XX		XX		XX		E8
DF	B1		7E	Germany	E1		E1
E0	DD		40	France	85		85
E1	DC		61*		A0		A0
E2	DF		61*		83		83
E3	DE		61*		61*		C6

E4	DB		7B	Germany	84		84
E5	7D	Denmark/Norway	61*		86		86
E6	7B	Denmark/Norway	61 + 65*		91		91
E7	D1		36*		87		87
E8	BF		7D	France	8A		8A
E9	BE		7B	France	82		82
EA	C1		65*		88		88
EB	BD		65*		89		89
EC	C4		69*		8D		8D
ED	C3		69*		A1		A1
EE	C6		69*		8C		8C
EF	C2		69*		8B		8B
F0	64*		64*		64*		D0
F1	D4		6E*		A4		A4
F2	C9		6F*		95		95
F3	C8		6F*		A2		A2
F4	CB		6F*		93		93
F5	CA		6F*		6F*		E4
F6	C7		7C	Germany	94		94
F7	AC		XX		F6		F6
F8	7C	Denmark/Norway	B4*		7C	Denmark/Norway	9B
F9	CE		7C	France	97		97
FA	CD		75		A3		A3
FB	D0		75		96		96
FC	CC		7D	Germany	81		81
FD	79*		79*		79*		EC
FE	XX		XX		XX		E7
FF	79*		79*		79*		98

Remarks: *- similar character

SP – space

XX - even similar character does not exist

7. Barcode

Using following barcode font can print barcode.

Barcode font	Font size	Applicable driver
Codabar	20 / 42 / 64 / 84	All thermal printers
Code128	20 / 42 / 64 / 84	CBM23x / IDP3210
Code39	20 / 42 / 64 / 84	All thermal printers
Code93	-	-
JAN13 (EAN)	20 / 42 / 64 / 84	All thermal printers
JAN8 (EAN)	20 / 42 / 64 / 84	All thermal printers
ITF	20 / 42 / 64 / 84	All thermal printers
UPC-A	20 / 42 / 64 / 84	All thermal printers
UPC-E	20 / 42 / 64 / 84	All thermal printers

[Note]

* Size of barcode can be selected by choosing font size.

The Barcode size is vertical size. It is calculated as follow:

Printing size (in inches) = Barcode size divide 72

* HRI characters can be added by special functions.

* Each barcode has limitation of characters to use. Please refer to the user's manual for the details of limitations.

* These fonts will not be shown correctly.

8. Graphic printing function

Following printer drivers support graphic printing.

Windows fonts (TrueType fonts) can be printed by these drivers as well.

	Resolution (DPI)
CBM1000(II)	203 x 203
CBM230/231/232/233	203 x 203
CBM253	203 x 203
CBM262	203 x 203
CBM270	203 x 203
CBM290/291	203 x 203
CBM292/293	203 x 203
CBM820 with special firmware	80 x 72
CMP-10	203 x 203
CT-S300	203 x 203
IDP3210	154 x 156
IDP3221	180 x 180
IDP3240	203 x 203
IDP3420/3421/3423 ESC/MODE	144 x 72
PPU231	203 x 203
PPU-700	203 x 203
BD2-2820	203 x 203
BD2-2860	203 x 203

* The printer mechanism must be special one for graphic printing.

9. Special functions

To use special function of printer, it is necessary to send specified character in "Control" font or to send specified character in "xx cpi" font. Both "xx cpi [Euro]", "xx cpi [Ext.]" font and Windows font (TrueType font) do not work for the special functions.

Model	Printer Function	"Control"		"xx cpi"
		ASCII Character	Hex Value	Hex Value
All drawer models	50ms pulse to drawer #1	A	41	81
All drawer models	100ms pulse to drawer #1	B	42	82
All drawer models	150ms pulse to drawer #1	C	43	83
All drawer models	200ms pulse to drawer #1	D	44	84
All drawer models	250ms pulse to drawer #1	E	45	85
All drawer models	50ms pulse to drawer #2	a	61	89
All drawer models	100ms pulse to drawer #2	b	62	8A
All drawer models	150ms pulse to drawer #2	c	63	8B
All drawer models	200ms pulse to drawer #2	d	64	8C
All drawer models	250ms pulse to drawer #2	e	65	8D
CBM262	Print to journal	1	31	91
CBM262	Print to receipt	2	32	91
CBM262	Print to both journal and receipt	3	33	93
All Models	Horizontal Tab (HT)	5	35	95
All Models	Line Feed (LF)	6	36	96
All Models	Carriage Return (CR)	7	37	97
All thermal models	Select no HRI with barcode	p	70	98
All thermal models	Select Font A HRI above barcode	q	71	99
All thermal models	Select Font A HRI below barcode	r	72	9A
All thermal models	Select Font B HRI above barcode	s	73	9B
All thermal models	Select Font B HRI below barcode	t	74	9C
All cutter models	Receipt paper Full Cut	F	46	9D
All cutter models	Receipt paper Partial Cut	P	50	9E
CBM1000 type **	NV Bitmap data ID:1 Normal printing	G	47	
CBM1000 type	NV Bitmap data ID:2 Normal printing	H	48	
CBM1000 type	NV Bitmap data ID:3 Normal printing	I	49	
CBM1000 type	NV Bitmap data ID:4 Normal printing	J	4A	
CBM1000 type	NV Bitmap data ID:5 Normal printing	K	4B	
CBM1000 type	NV Bitmap data ID:1 Double Width printing	Q	51	
CBM1000 type	NV Bitmap data ID:2 Double Width printing	R	52	
CBM1000 type	NV Bitmap data ID:3 Double Width printing	S	53	
CBM1000 type	NV Bitmap data ID:4 Double Width printing	T	54	
CBM1000 type	NV Bitmap data ID:5 Double Width printing	U	55	
CBM1000 type	NV Bitmap data ID:1 Double Height printing	V	56	
CBM1000 type	NV Bitmap data ID:2 Double Height printing	W	57	
CBM1000 type	NV Bitmap data ID:3 Double Height printing	X	58	
CBM1000 type	NV Bitmap data ID:4 Double Height printing	Y	59	
CBM1000 type	NV Bitmap data ID:5 Double Height printing	Z	5A	
CBM1000 type	NV Bitmap data ID:1 Quadruple printing	[5B	
CBM1000 type	NV Bitmap data ID:2 Quadruple printing	}	5D	
CBM1000 type	NV Bitmap data ID:3 Quadruple printing	^	5E	
CBM1000 type	NV Bitmap data ID:4 Quadruple printing	_	5F	
CBM1000 type	NV Bitmap data ID:5 Quadruple printing	`	60	

** CBM1000type=CBM1000/CBM1000II/CT-S300/IDP-3240/PPU-700

10. Paper sizes and recommended margins

A) Length

Followings paper length can be chosen.

	Paper length	Supporting OS
a)	A4 length (297 mm)	All
b)	B5 length (257 mm)	All
c)	6 in Page (6 in)	All
d)	Letter length (11 in)	All
e)	Executive length (10.5 in)	All
f)	Continuous -Control Only	Win9x, ME
g)	3240 mm *** This is default setting	All
h)	User-Defined size	All

[Note]

Size a – e, g) Printing will stop before the specified length if the print data is finished before reaching end of the page. If the print data is more than specified length, the printer will cut on paper length that pre-set. 3240mm length cannot be used from MS-Word97/2000.

Size f) Printer will stop printing after the last line of print, wait for further print command instead of leading out six lines of blank paper after the final print line and then cutting. This function allows you to print a lengthy document with no gaps when printing. It also can open the cash drawer without feeding too much paper. (Only a one line feed) If you select this paper size, please select Paper Source is "Continuous -Control Only" too.

Size h) Print method is the same as Size a) but the user can set the paper length.

On 9x/ME, you can choose User Define from list of paper size.

On NT/2000, please make custom form as follows.

From Start button

Start -> Setting -> Printers

Then from menu of printer window,

File -> Server Property

Then check "Create A New Form" on Form tab and enter the settings for the new form.

And click "Save Form" or OK.

Exception) Slip printer CBM820 supports "A4 length", "Letter length" and "User Defined" only.
Driver for (Label) supports 25mm and "User Defined" only.

B) Width and margin

Paper width depends on the printer and the setting.

	Width or Size (W x L)	Top (mm)	Bottom (mm)	Left (mm)	Right (mm)
CBM1000(48 col)	80mm(3.15 in)	0	0	4	4
CBM1000(42 col)	80mm(3.15 in)	0	0	8.5	8.5
CBM1000(36 col)	58mm(2.88 in)	0	0	2	2
CBM1000(30 col)	58mm(2.88 in)	0	0	2	11
CBM1000II(48 col)	80mm(3.15 in)	0	0	4	4
CBM1000II(42 col)	80mm(3.15 in)	0	0	8.5	8.5
CBM1000II(36 col)	58mm(2.88 in)	0	0	2	2
CBM1000II(30 col)	58mm(2.88 in)	0	0	2	11
CBM253 (Paper)	60mm(2.36 in)	0	0	2	2.1
CBM253 (Label)	56 x 25 mm	0	0	3.5	3.6
CBM262	58mm(2.28 in)	0	0	2	2
CBM270	58mm(2.28 in)	0	0	4	6
CBM290/291	58mm(2.28 in)	0	0	3	3.1
CBM292/293	80mm(3.15 in)	0	0	4	4
CBM7x0	76mm(2.99 in)	0	0	6.3	6.4
CBM820	80 x 297(mm)	0	69.8	1	5.4
	3.15 x 11 in	0	69.9	1	5.4
CBM9x0 (24 columns)	58mm(2.25 in)	0	0	5.3	5.3
CBM9x0 (40 columns)	58mm(2.25 in)	0	0	3.9	3.9
CMP-10	58mm(2.28 in)	0	0	4	6
CT-S300(48 col)	80mm(3.15 in)	0	0	4	4
CT-S300(42 col)	80mm(3.15 in)	0	0	8.5	8.5
CT-S300(32 col)	58mm(2.28 in)	0	0	5	5
CT-S300(30 col)	58mm(2.28 in)	0	0	6.5	6.5
IDP311x (24 columns)	58mm(2.25 in)	0	0	5.3	5.3
IDP311x (40 columns)	58mm(2.25 in)	0	0	3.9	3.9
IDP3210	80mm(3.14 in)	0	0	3	7.8
IDP3221	80mm(3.14 in)	0	0	4	4
IDP3240(69 col)	112mm(4.41 in)	0	0	4	4
IDP3240(60 col)	112mm(4.41 in)	0	0	11	11
IDP342x	76mm(2.99 in)	0	0	6.3	6.4
IDP35xx	76mm(2.99 in)	0	0	6.3	6.4
IDP460	76mm(2.99 in)	0	0	6.3	6.4
PPU231	80mm(3.14 in)	0	0	4	4
PPU-700(48 col)	80mm(3.15 in) *1	0	0	4	4
PU-700(42 col)	80mm(3.15 in)	0	0	8.5	8.5
PPU-700(32 col)	58mm(2.28 in)	0	0	5	5
PPU-700(30 col)	58mm(2.28 in)	0	0	6.5	6.5
BD2-2820	58mm(2.25 in)	0	0	3	3.1
BD2-2860	58mm(2.25 in)	0	0	4	6

*1 PPU-700 supports more paper width. For other paper width, use need to define the paper size.

11. Example of usage by Microsoft Word

This is the sample to use printer font on MS-Word.

From the menu, click

File--> Print --> Printer Name

Choose the printer to use then click Close button. Then

File --> Page setting --> Paper size

Choose the paper size to use. Then

File --> Page setting --> Margin

Set the proper margins. (If you set the margins to zero, it will be corrected to minimum number automatically after the error message.)

Choose the printer font in the font list box

Choose the printer font size 12 or 24 in the font size list box.

Step from here is important.

Make the print data ready and from the menu, click

Tool --> Option --> Compatibility

Then choose "Microsoft Word 6.0/95". Then

File --> Print --> OK

If you skip this step shown in red, the data is either printed in graphics or printer just feed few empty lines.

12. Example of program by Visual Basic

Following program list is for "CBM1000 Partial Cut".

```
'Set "CBM1000 Partial Cut" as default printer driver
Dim X As Printer
For Each X In Printers
    If X.DeviceName = "CBM1000 Partial Cut" Then
        Set Printer = X
        Exit For
    End If
Next

'Printing Windows font"
Printer.FontSize=10
Printer.FontName="Ariel"
Printer.Print "Font Ariel / Size 10"

'Printing Printer font
Printer.FontSize=12
Printer.FontName="15 cpi"
Printer.Print "15 cpi / Size 12"

'Printing Barcode
Printer.FontSize=12
Printer.FontName="Control"
Printer.Print "t" 'HRI character under barcode with Font B
Printer.FontSize=42
Printer.FontName="Code39"
Printer.Print "ABC123456"

'Opening cash drawer
Printer.FontSize=12
Printer.FontName="Control"
Printer.Print "A" 'Drawer 1 at 50ms

'Cutting paper"
Printer.FontSize=12
Printer.FontName="Control"
Printer.print "P" 'Partial cut

'Printing graphic data from NV memory
Printer.FontSize=12
Printer.FontName="Control"
Printer.print "G" 'Print #1 graphic data in NV memory

Printer.EndDoc
```

Also you can send commands through driver but it is necessary to choose printer font first.

```
Printer.FontSize=12
Printer.FontName="15 cpi"
Printer.Print CHR$(&H1B) + "V" + CHR$(1) '90 degrees right turned.
Printer.Print "15 cpi / Size 12"
Printer.EndDoc
```

13. Remarks

- * It is not possible to receive status data of printer.
- * In case of serial interface, it could happen that printer does not print correctly due to the

combination of PC and printer. If you find the problem only on specific PC, please try to decrease FIFO buffer level or disable the FIFO. Then it would solve the problem.

Microsoft, Microsoft Windows. Microsoft Word and TrueType are trademarks of Microsoft Corporation.

ESC/POS is a trademark of SEIKO EPSON Corporation.

Star is a trademark of Star Micronics Co.Ltd.