

CITIZEN

Windows Driver Specifications

(Function, Setting, Specifications)

For Ver.3.610

CITIZEN SYSTEMS JAPAN CO., LTD.

Index

Index.....	- 1 -
Revision history (3.xx/2.xx).....	- 3 -
1. Installing the driver and setting up the printer	- 6 -
2. Operating conditions of the driver.....	- 6 -
3. Supported printer models and driver functions.....	- 6 -
4. Driver setting	- 8 -
4.1 "General" tab.....	- 8 -
4.1.1 Paper Size.....	- 9 -
4.1.2 Grayscale printing	- 10 -
4.1.3 NV Logo Process	- 11 -
4.1.4 Paper Type	- 12 -
4.1.5 Paper Media.....	- 12 -
4.1.6 Paper Feed	- 13 -
4.1.7 Cutter Mode.....	- 13 -
4.1.8 Cash Drawer #1, #2	- 14 -
4.1.9 Buzzer.....	- 15 -
4.1.10 Bar Code Printing	- 16 -
4.1.11 Logo Printing	- 16 -
4.1.12 Print Position	- 17 -
4.2 Driver Advanced Functions	- 17 -
4.3 Electronic Journal Data	- 19 -
4.3.1 Journal Viewer.....	- 23 -
4.4 Watermark	- 25 -
4.5 Upside Down Printing	- 27 -
4.6 Coupon printing	- 29 -
4.7 File Sender	- 32 -
4.8 POS Printer Utility	- 33 -
4.9 Reprint	- 35 -
4.11 Status Monitor Library.....	- 41 -
4.12 Version list.....	- 42 -
5. Printer fonts.....	- 43 -
6. Barcode.....	- 47 -
7. 2D Barcode	- 48 -
7.1 Format of the 2D barcode font	- 48 -
7.2 2D Barcode Font Usage	- 49 -
8. Graphic printing function	- 51 -
9. Special functions.....	- 52 -
10. Paper sizes.....	- 53 -

10.1 Conventional models.....	- 53 -
10.2 New standard of paper size	- 55 -
10.3 User defined paper sizes.....	- 56 -
11. Printer Status.....	- 58 -
11.1 Getting Printer Status	- 58 -
11.2 Enable/Disable Bi-directional Communication.....	- 60 -
12. Example of Usage for specific software	- 60 -
12.1 Example of usage by Microsoft Word	- 61 -
12.2 Example of program by Visual Basic.....	- 62 -
12.3 Example of program by Visual C++	- 63 -
12.4 Example of program by Visual Basic.Net.....	- 65 -
12.5 Example of program by Visual C#.Net	- 69 -

Revision history (3.xx/2.xx)

Date	Version	Details
2009/06/25	V2.00	Issued
2009/010/29	V2.01	Added CT-S601
2009/12/15	V2.02	Added CT-S281 and CT-S4000 Windows7 is supported Status function is supported on all the drivers. Driver port setting function is added. Status monitor library is added.
2010/05/20	V2.02 (modified)	Added CT-S651 and CT-S851
2010/5/27	V2.23	Version number is changed to same version as driver itself. Status monitor is updated to Ver2.2.4.0. Online/Offline can be detected correctly... USB data transfer time out value of status monitor is changed to 8 seconds to avoid the communication error caused by bi-directional communication via USB on Windows7. (32-bit)/(64-bit) are added to File Description of DLLs. Windows7 device icon for CT-S60, 651, 801 and 851 are added.
2010/11/25	V2.24	Ethernet is added for supported interface Explanation about printer status is added Source code sample for VC++ programming is modified. POS Printer Utility is updated to Ver1.8.3 (Wrong setting values are corrected.) Status Monitor Library is updated to Ver1.3.1 (The time to get status is shortened.)
2011/4/13	V2.25/1.660	CT-S310II driver is added. 2 dimensional barcode fonts are added. "Label/BM" function is changed to "Paper Media" function. "Cutter Mode" is refined to support Label/BM paper cutter mode. "Paper Feed" function is newly added for the adjustment of paper feeding before the cut. File sender garbage character problem is fixed. Changes to show/hide buttons and tabs are added. Status monitor is updated to Ver2.2.5.2 for minor changes. POS Printer Utility is updated to 2.0 and is excluded from driver installer. Document for Ver1.660 is integrated.
2012/6/15		Explanation about TCP/IP port is added.
2013/3/1	V2.27/1.680	Windows8 is supported. Version dialog function is added. The problem of cutting in the middle of watermark is fixed. The problem of reprint and coupon print from client PC to shared printer is fixed. Status monitor is updated to 2.2.5.3. Win8/Win Server2012 are supported. Log file function is improved. Setting to accept/reject Offline status is added. Setting to enable/disable notification of printing completion is added. Status inquiry command sequence for each interface except parallel is changed. Unit of status monitor setting is changed from driver base to model base. Driver port setting tool is updated.
2013/7/22	V2.28/V1.690	Installation failure on non-English Windows is fixed. Problem to get printer status with LAN/WLAN is fixed. Problem of PMU2xxxIII presenter status is fixed. "X" mark is removed from the icon for software un-installation list
2014/1/21	V2.281/1.691	Support of CT-S281BD is added.
2014/10/17	V3.000	Windows2000 is deleted from support OS CT-S251/S8xxII/6xxII is added. Gray shade logo and water mark are added for CT-S251/S8xxII/6xxII.
2014/12/15	V3.100	Added 4.1.2 Grayscale printing.
2015/02/27	V3.101	Problem of landscape grayscale printing with user defined paper size is fixed.
2015/08/20	V3.200	Windows10 is supported. 1.xx / 2xx drivers are integrated to 3.xx by having function to enable/disable "Driver Advanced Functions".
2017/3/1	V3.300	Installer is improved to have less trouble during installing. Stream of installation is improved. Time for installation is shorter and file size is smaller. Related tool is installed/uninstalled together with the driver. Even printer is connected via USB, final installation can be done by power recycle of printer. TCP/IP port monitor installed together. Status function for LAN interface is improved not to have offline status easily. Driver itself has function of settings like port time out which was done by external tool. Added CT-SD150/151/E351/651 support New standard is applied for CT-D150/151/E351/651 page size.
2018/7/17	V3.4.0.0	There is no change in the driver body. The status acquisition method by SNMP can be selected. Improved handling when Bluetooth connection is broken. The installation procedure has been slightly improved.
2018/12/28		Added CT-S751 support

2019/3/15	V3.5.0.0	Added CT-S4500 ETW is implemented for deeper analysis at the trouble. Descriptions about 1.6 drivers are deleted.
2020/11/17	V3.6.0.0	Adjusted to avoid duplicating the contents with Windows driver installation guide. Added the function of "Automatic reprinting on error". Added "Package-Aware" function which solves various remote driver installation problems Paper jam status is added for CT-E601(2021/2/9) Fixed a bug that prevented the combination of standard TCP/IP port and status driver from causing an exception error. Fixed a bug that prevented the status function of (Copy 1) driver from being enabled immediately after PnP.
2021/5/17	V3.6.1.0	Added support for CT-D101, CT-E301 and CT-E601. Changed the timeout value when using SNMP for status monitor. Added a new method to add the print port of CITIZEN TCP/IP Port Monitor in batch. The function of the drawer has been drastically changed and activating patterns for the external buzzer has been added. Changed to send an initialization command at the end of the print data so that the code page is not retained after printing. Other minor fixes and feature additions.
2022/8/17		Windows11 is supported. Added support for CT-S280II and CT-S281II.
2023/6/1		Windows XP and Windows Vista are removed from target OS.
2023/11/21		Added support for CT-S081III and CT-S851III.

Caution

- (1) You are hereby notified that any dissemination, distribution or copying of this document without written consent is strictly prohibited.
- (2) The contents of this document are subject to change without prior notice.
- (3) We tried to ensure the content of this document but if you find any mistakes, please let us know.
- (4) Regardless of article (3), we cannot be responsible for any damages/influences caused by the use of this driver.
- (5) If you do not agree any of above, you are not allowed to use the driver.

Trade marks

Microsoft, Windows 2000, Windows XP, Windows Server 2003, Windows Vista, Windows 7, Windows 8, Windows8.1, Windows10, Windows11, Visual Basic, Visual C++, Visual C#, .Net, Microsoft Word, Microsoft Access and TrueType are trademarks of Microsoft Corporation.

All other company names or product names are the trademarks or registered trademarks of their respective holders.

1. Installing the driver and setting up the printer

To install the driver and configure the printer follow the "Windows Driver Installation Guide".

2. Operating conditions of the driver

Follow the "Windows Driver Installation Guide" for the operating conditions of the OS (operating system), printer interface (port), and other driver requirements.

3. Supported printer models and driver functions

Each printer has different function and driver functions are different depending on the printer model.

	Driver Advanced Functions				File Sender	Bi-directional Communication	
	Grayscale printing	Watermark		Electronic Journal / Upside Down Printing / Coupon Printing / Reprint		Driver Port Setting	Status Monitor Library
		NV Logo	Image				
CT-D151 CT-E601 CT-E651 CT-S751 CT-S4500 CT-S251 CT-S601III CT-S651II CT-S801II CT-S851II CT-S801III CT-S851III	✓	✓	✓	✓	✓	✓	
CT-D101 CT-D150 CT-E301 CT-E351 CT-S2000 CT-S281 CT-S310 CT-S310II CT-S4000 CT-S601 CT-S651 CT-S801 CT-S851 CT-S280II CT-S281II			✓	✓	✓	✓	
CT-P29x PPU-700II PMU3300			✓	✓	✓	✓	
CT-S280 CT-S300 PPU-700			✓	✓	✓		
PMU2xxx PMU2xxxIII Presenter					✓	✓	✓
BD2-222x BD2-428x CBM1000II CD-S500 CD-S501/503					✓		

"Driver Advanced Functions" can be disabled by driver settings.

Hereafter, (II) means Type I and Type II, and (III) means Type I, Type II, and Type III.

Following drivers are available for derived model and derived function

CT-E651 Label

CT-D151 Label

CT-S281 Label

CT-S310 Black Mark

CT-S2000 Label

CT-S4000 Label

CT-S4000 Compress

CT-S4500 Label

CT-S4500 Compress

CT-S801 Label

CT-S801 II Label

CT-S851 II Black Mark

CT-S851 Black mark

CT-S651 II Black Mark

CT-S651 Black mark

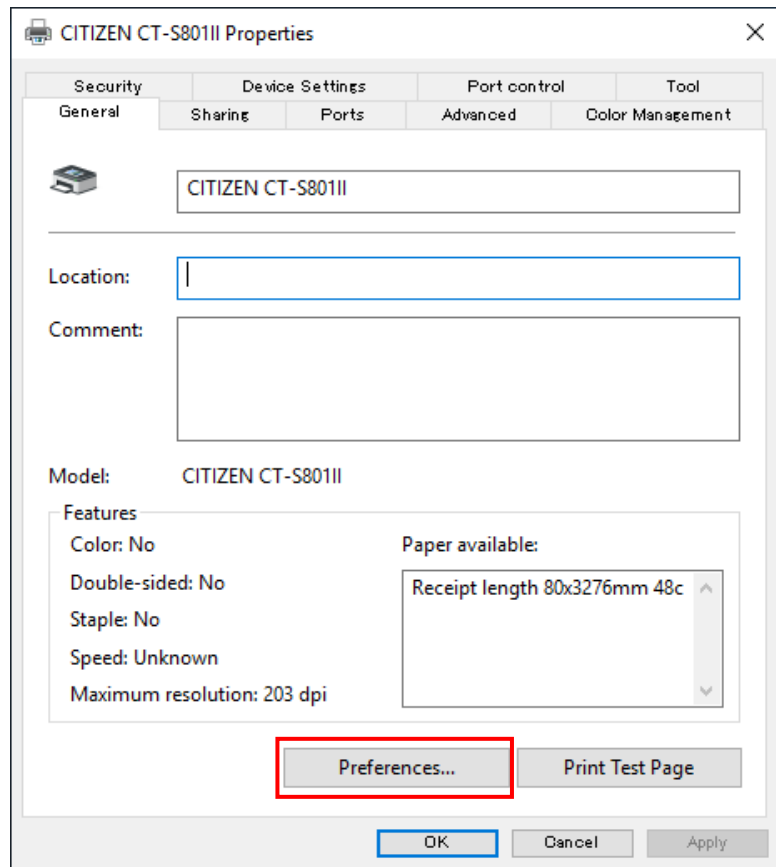
CT-S281II Label

4. Driver setting

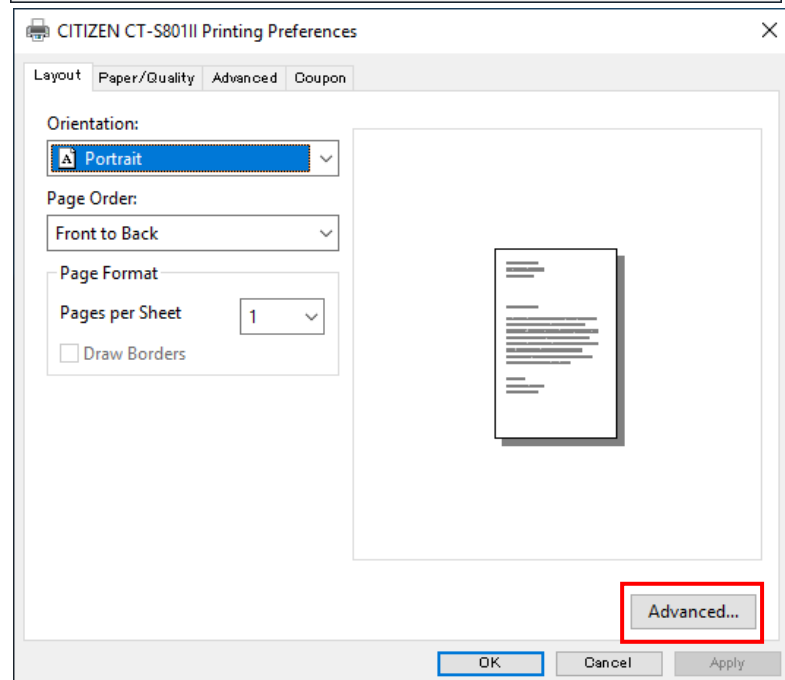
Follow the steps below to access our unique function to change the printer driver settings

4.1 "General" tab

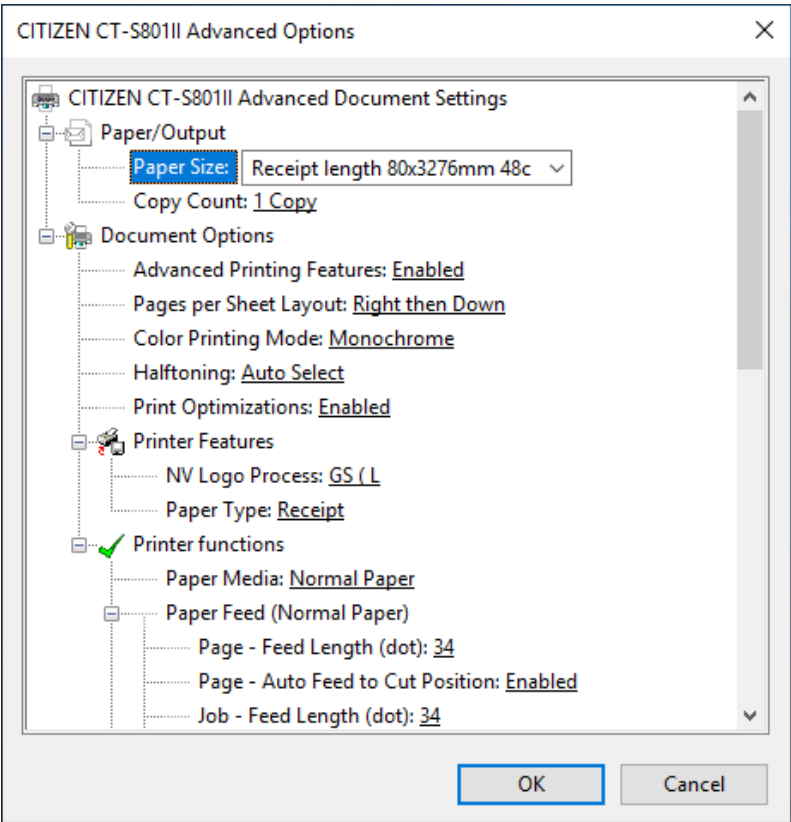
Select the printer properties for the printer driver by right clicking on the printer icon.
Then Press the "Preferences" button in the General Tab.



Then press the "Advanced" button.



There are some items for the printer setting.

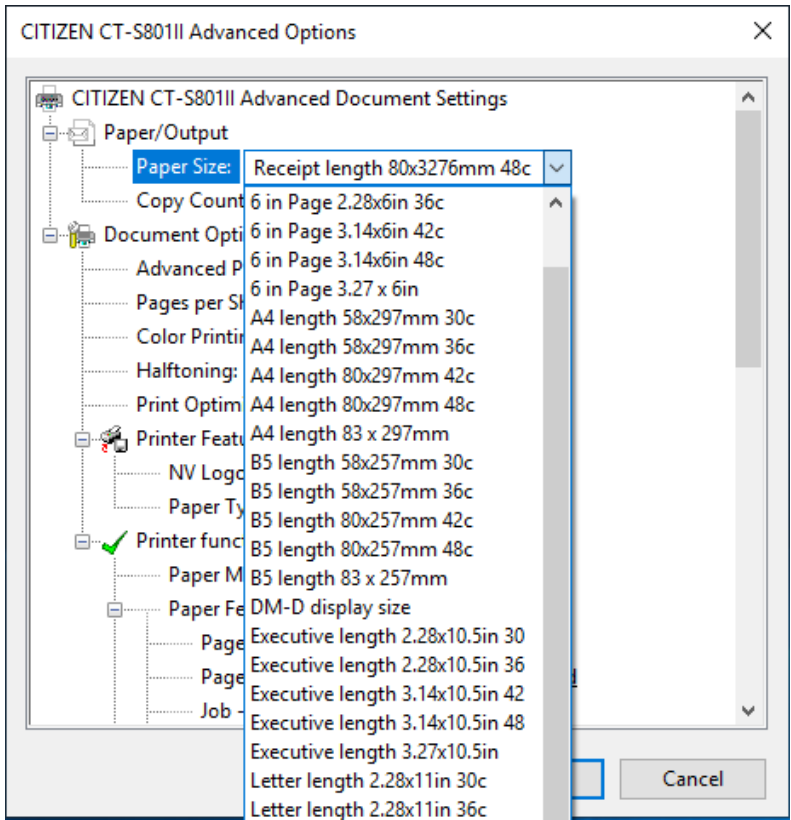


4.1.1 Paper Size

You can choose the paper size. Listed paper size depends on the printer driver.

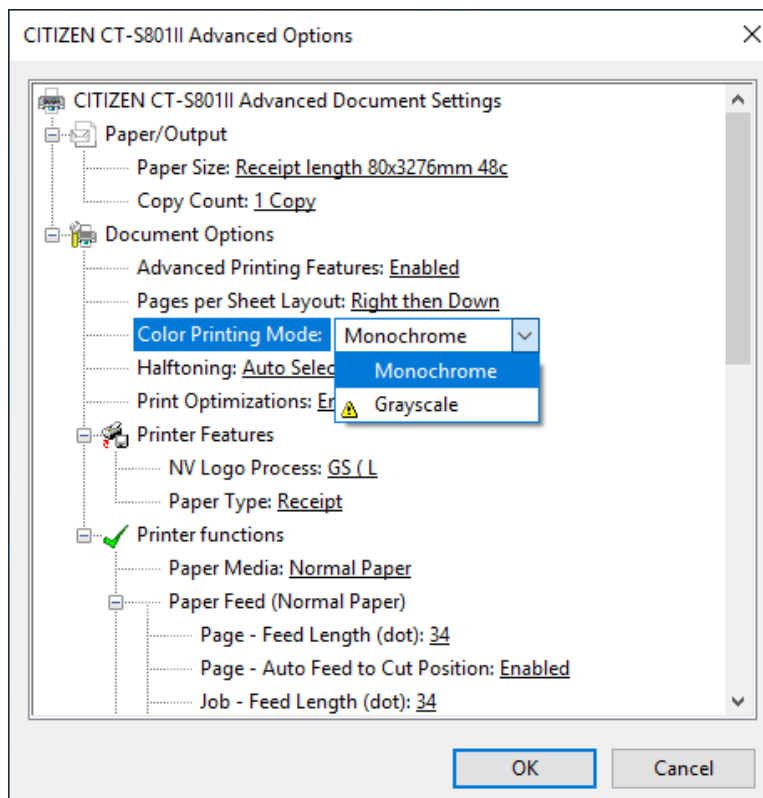
Default paper size depends on printer driver.

* Custom paper can be used. Please refer to the explanation of paper width and paper length in this document.



4.1.2 Grayscale printing

When "Grayscale" is chosen on "Color Printing Mode", Grayscale printing can be performed.

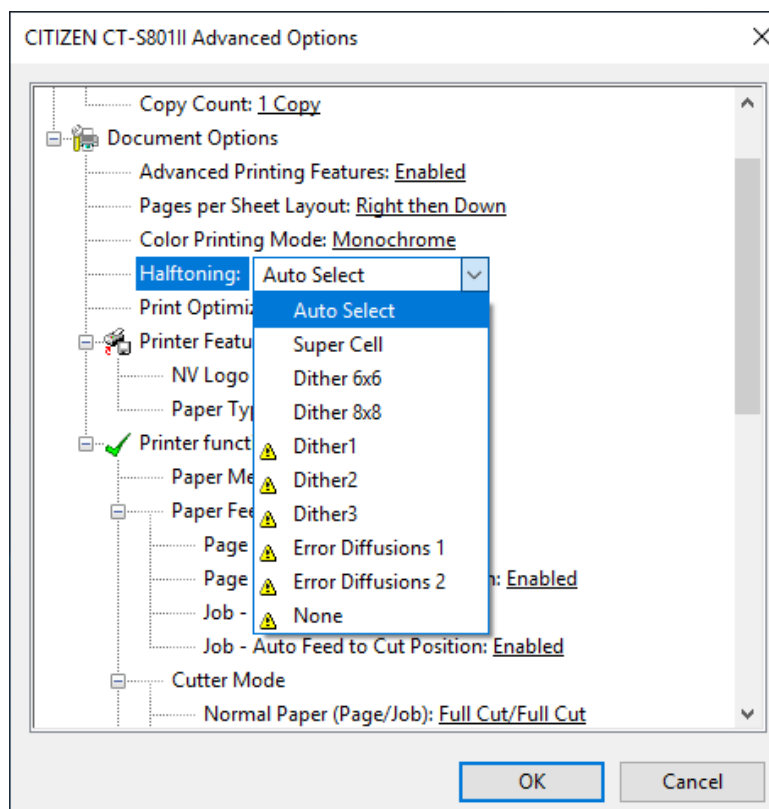


The dithering method can be chosen at "Halftoning". Following 6 methods are available.

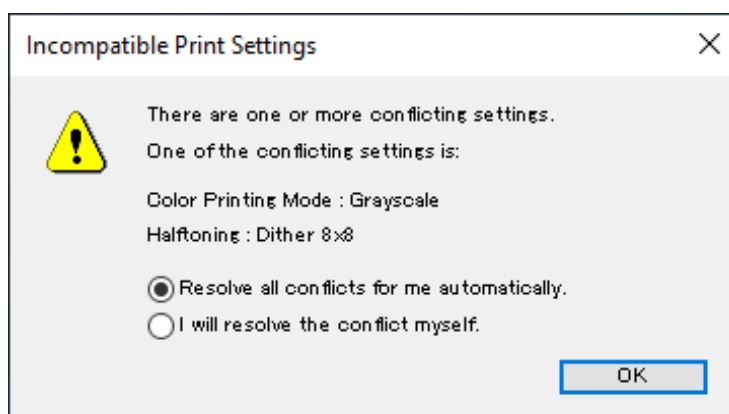
- Dither1
- Dither2
- Dither 3
- Error Diffusions 1
- Error Diffusions 2
- None

The selectable methods in "Grayscale" and "Monochrome" are different.

In the case of wrong combination, "!" mark appears. If you see it, review the choices.



Even if you press "Apply" button with "!" mark, right message is shown and appropriate combination can be selected automatically.



4.1.3 NV Logo Process

NV logo registration method can be chosen here. When printing logo function is used as mentioned in section 4.1.10 Logo Printing, the chosen method is used.

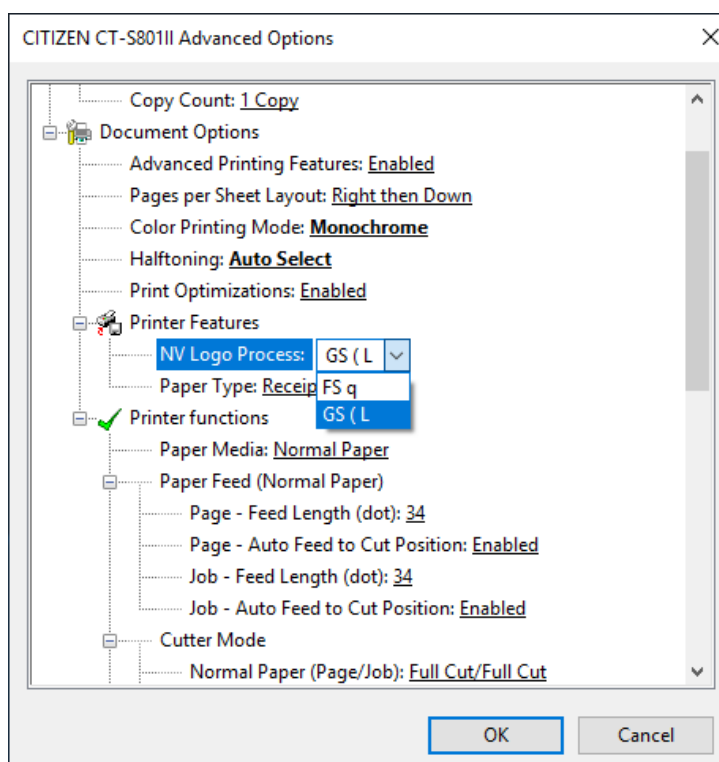
"FS q" is old way

"GS (L" is new.

Default is basically

"GS (L".

If you want to print grayscale logo, choose GS (L.



NV logo registration by "FS q" is done altogether for multiple logo data and ID numbers are added sequentially. NV logo registration by "GS (L" can be done for each logo data individually and key code with 2 characters can be added by user. It is possible to access registered logo data by this key code.

If you use the function of NV logo grayscale printing, choose "GS (L". Please use POS Printer Utility for NV logo registration of grayscale.

The function to support "GS (L" depends on the model.

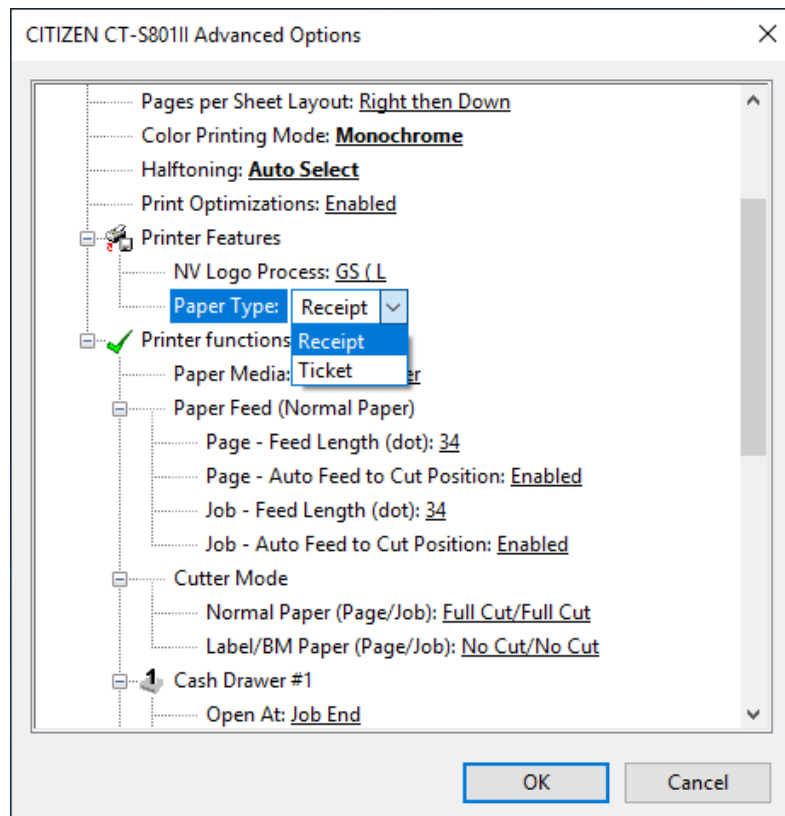
If "Paper Type" is not shown, it means that the printer driver does not support "GS (L" function and only "FS q" is supported.

If Logo function of CITIZEN POS Printer Utility work for a model, default of NV Logo Process for the model is GS (L.

4.1.4 Paper Type

You can choose Receipt or Ticket as paper types. Receipt allows flexible paper length according to the data length to avoid waste of paper. Ticket print in fixed length even the print data is short.

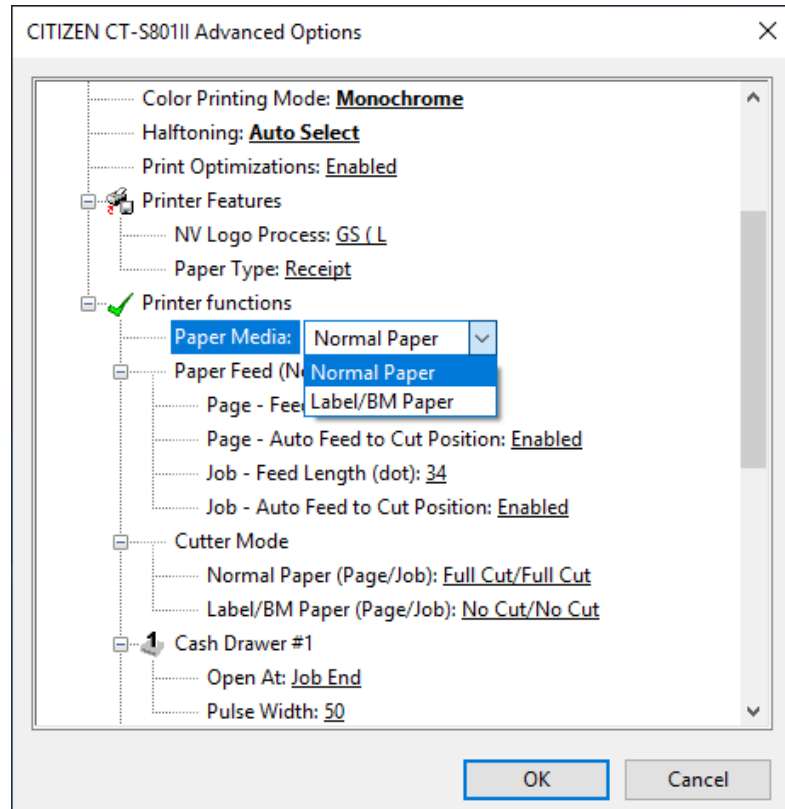
Default setting is "Receipt"



4.1.5 Paper Media

Choose the type of the paper to use from either normal paper or label/BM paper.

*If Label/Black Mark paper is not supported for the model, you cannot choose Label/BM Paper.



* If you use Label/Black mark, 4.1.3 Paper Type needs to be set for Receipt.

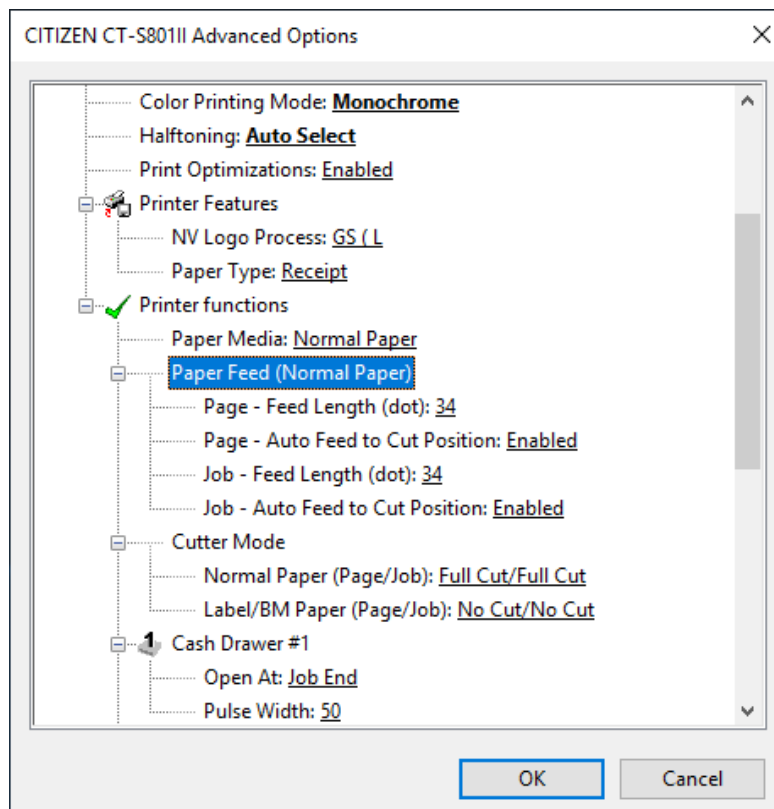
4.1.6 Paper Feed

Behavior and paper feeding length can be set for end of middle page (Page) and end of last page (Job).

Feed Length (dot) :

It can be set from 0 to 406 dots.

Auto Feed to Cut Position :
Automatic paper feeding for the cut can be set for valid/invalid.



*If Auto Feed to Cut Position is set for valid and Feed Length is specified, paper feed to cut position is done first then specified paper feed is performed.

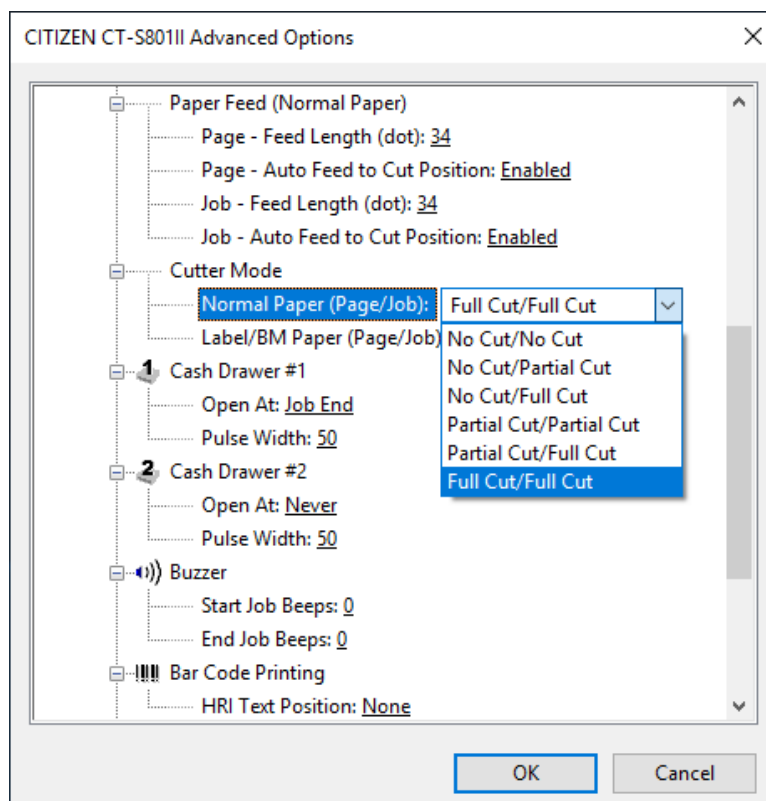
4.1.7 Cutter Mode

Cutting method for middle page end (Page) and cutting method for receipt end (Job) can be chosen.

For the normal paper, there can be maximum 6 different cutting method combinations by partial cut, full cut and no cut.

For the label/black mark paper, cut or no cut can be chosen.

Default setting depends on the driver.



- * Partial cut mean that cutter leaves one tab by the cut.
- * This menu is not shown on the driver model where the cutter is not equipped.
- * There is "Partial only" in the memory switch setting. If this setting is valid, "Full Cut" works only as "Partial Cut" automatically. Please refer User's manual for the details of memory switches.

4.1.8 Cash Drawer #1, #2

This function opens the cash drawer or sounds the external buzzer by sending a signal (Pulse) to the drawer or external buzzer connected to the cash drawer connector. The cash drawer connector has a circuit that can connect two cash drawers or an external buzzer. (#1 and #2)

In "Open/Output Timing", set the timing for opening the cash drawer and sounding the external buzzer.

Select from No (do not use this function), Job Start (when printing starts), Job End (when receipt ends), and Page End (when page ends). The initial value is No.

In "Output Pulse Pattern" set the pattern of the signal sent to the drawer and external buzzer.

There are two types of external buzzers.

A: Buzzers that sound an internal melody or other sound with a single signal. (e.g., our CBZ-100),

B: Buzzers that emit the same sounds according to the signal ON/OFF pattern (e.g., our CBZ-20).

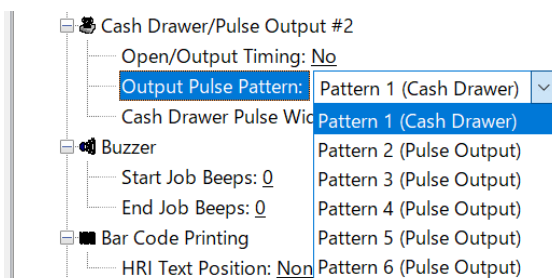
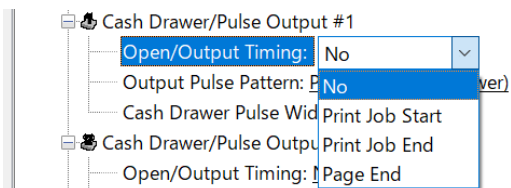
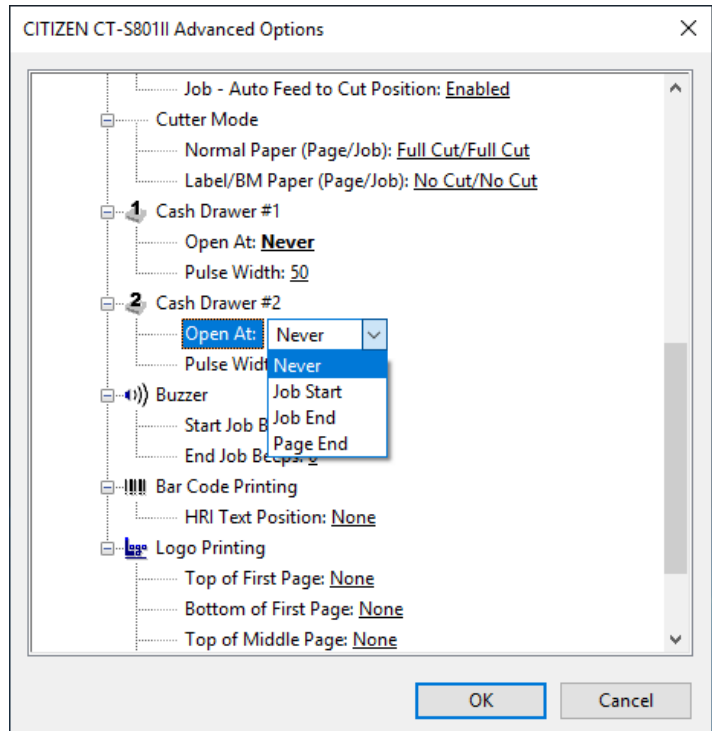
In "Output Pulse Pattern", make the following choices depending on the connected cash drawer/external buzzer.

Cash drawer: Pattern 1 (Cash Drawer)

Type A buzzer: Pattern 2 (Pulse Output)

Type B buzzer: Patterns 3-6 (Pulse Output)

(*Pattern3-6 can be selected only with drawer #2)



In "Cash Drawer Pulse Width" set the length of the signal sent to the cash drawer between 50ms and 250ms when Pattern 1 is selected in Output Pulse Pattern.

Caution

- *No signal can be output from the drawer kick connector during printing.
- *The default value of Pulse Width for Pattern1 (Cash Drawer) is 50ms. If the cash drawer does not open with this value, please adjust the value of the Cash Drawer Pulse Width.
- *The driver's Buzzer function will not sound the external buzzer. Also, the built-in buzzer will not sound with the Cash Drawer/Pulse Output function.

Warning

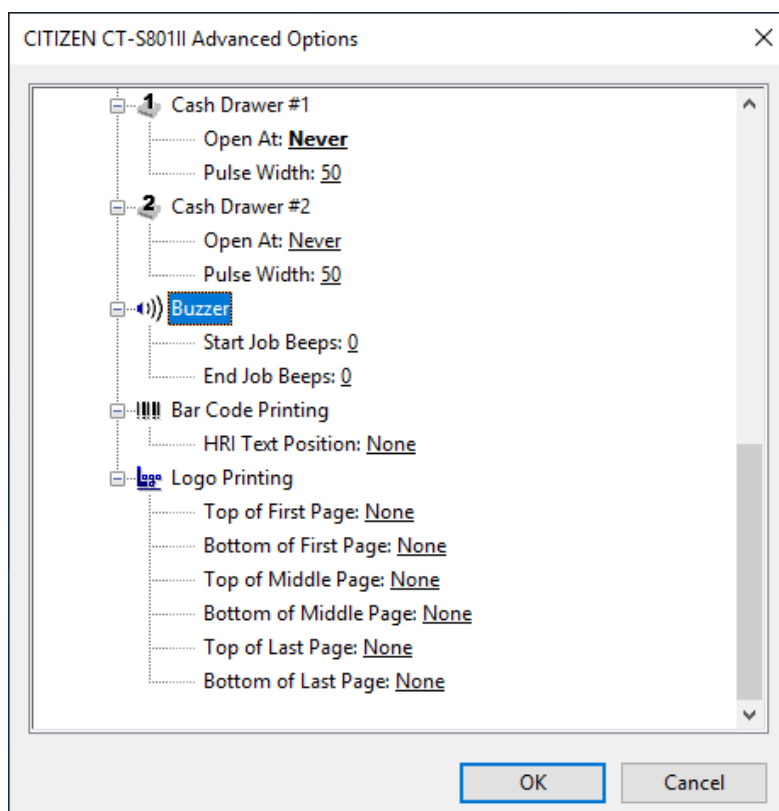
The following uses may cause system errors or malfunctions in the printer.

- *Simultaneous drive of #1 and #2
- *Wrong combination of drawer/external buzzer
- *Too long Pulse Width setting

4.1.9 Buzzer

Buzzer function of printer can be utilized from the driver. The timing of buzz can be selected from top of receipt (Job Start) or end of receipt (Job End). Number of buzz can be selected from 1 to 9.

Default setting is no buzz.



* Driver model which does not have buzzer does not show this menu.

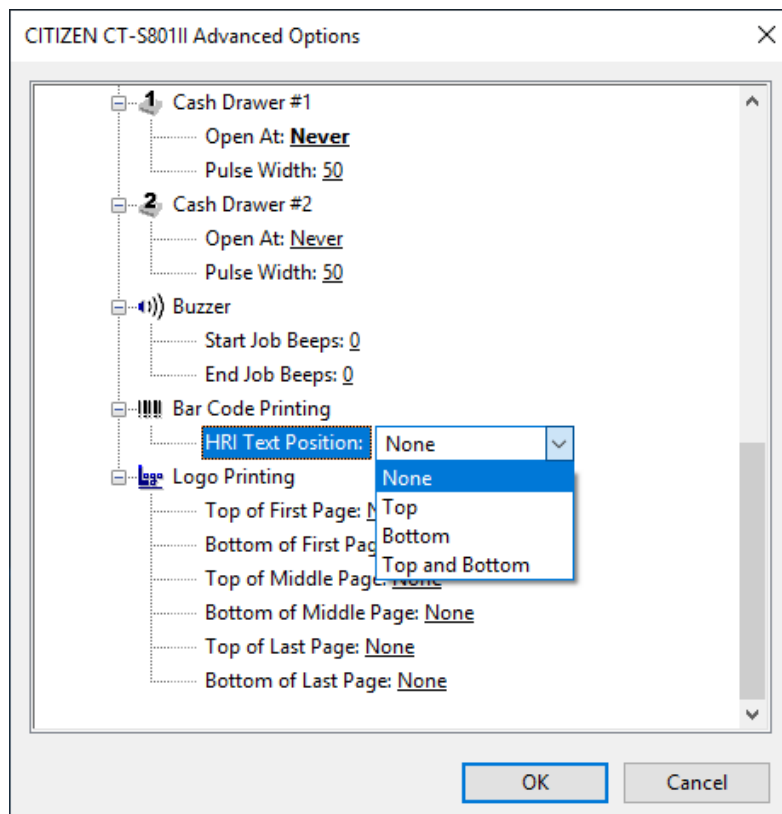
4.1.10 Bar Code Printing

HRI character setting can be changed. (HRI character is the character which comes with barcode.)

No HRI, Top, Bottom or both (Top and Bottom) can be selected.

Default is not HRI characters.

Please refer to section of Barcode in this document for the details



* Driver model which does not have barcode function does not show this menu.

4.1.11 Logo Printing

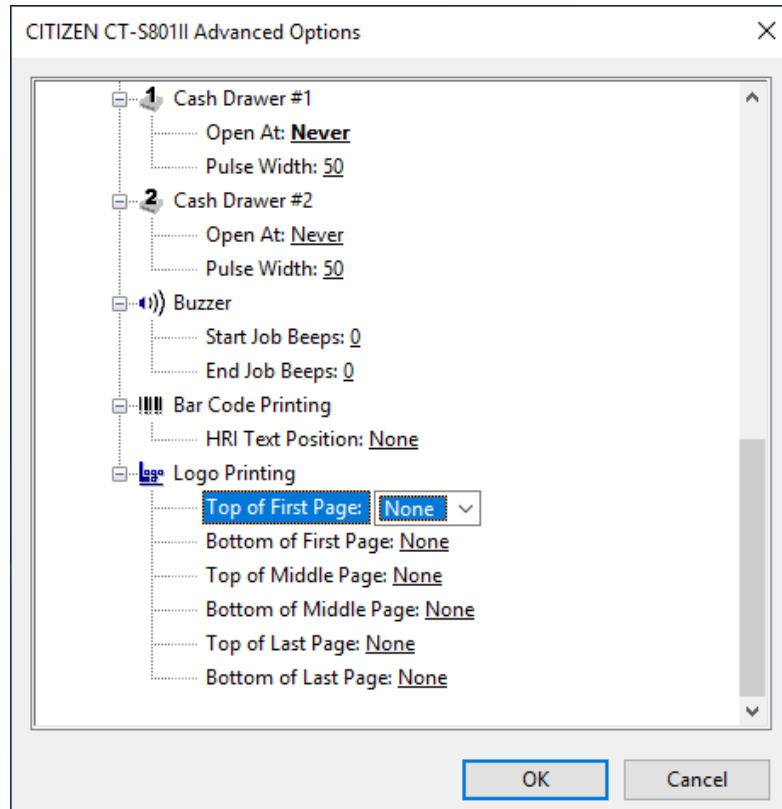
The setting of NV logo printing function can be changed.

The position to print NV logo can be chosen from top of page or end of page.

The page to print logo can be chosen from first page, middle page, or last page.

NV logo data to print can be chosen from logo1 to logo9.

Default setting is set for printing no NV logo



- * As mentioned in section "4.1.2 NV Logo Process", there are 2 different commands to register logo data. Please make sure if the NV logo data is registered by FS q command or GS (L command. Please refer to command reference for the details of the command.
- * NV logo registration can be done easily by CITIZEN POS Printer Utility.
- * If you register GS (L style NV logo data by CITIZEN POS Printer Utility, any of predefined key code "L1", "L2", "L3", "L4", "L5", "L6", "L7", "L8" or "L9" need to be assigned.
- * If "FS q" command is used, each logo data is recognized as follows.
 - logo1:Firstly registered NV logo
 - logo2:Secondly registered NV logo
 - logo3:Thirdly registered NV logo
 - logo4:Fourthly registered NV logo
 - logo5:Fifthly registered NV logo
 - logo6:Sixthly registered NV logo
 - logo7:Seventhly registered NV logo
 - logo8:Eighthly registered NV logo
 - logo9:Ninethhly registered NV logo
- * If "GS (L" command is used, the each logo data is recognized as follows.
 - logo1:NV logo saved as key code "L1"
 - logo2:NV logo saved as key code "L2"
 - logo3:NV logo saved as key code "L3"
 - logo4:NV logo saved as key code "L4"
 - logo5:NV logo saved as key code "L5"
 - logo6:NV logo saved as key code "L6"
 - logo7:NV logo saved as key code "L7"
 - logo8:NV logo saved as key code "L8"
 - logo9:NV logo saved as key code "L9"

4.1.12 Print Position

This is a function only for the CT-4500 driver.

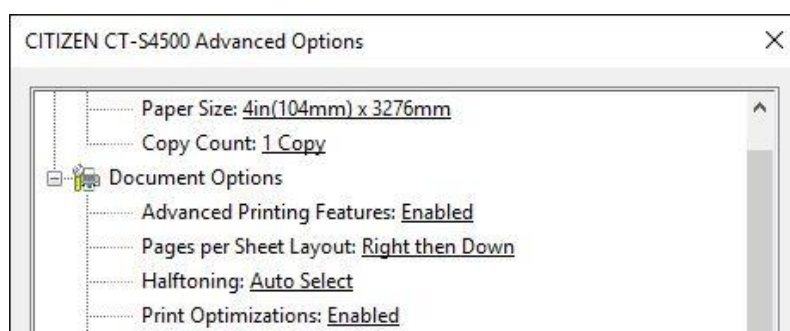
Print Position

- Ignore printer setting (MSW8-1)

Driver specifies the print start position regardless of the paper width setting of the printer.

- Follow printer setting(MSW8-1)

Driver does not specify the print start position, and printing is performed according to the paper width setting of the printer.



4.2 Driver Advanced Functions

Driver advanced function can be disabled by the setting of "Driver Advanced Function".

If there is no reason, keep the setting as Valid.

If it is set for Invalid, those function cannot be used but printing speed becomes little faster.

The functions covered as Driver Advanced Functions are as follows.

Grayscale printing

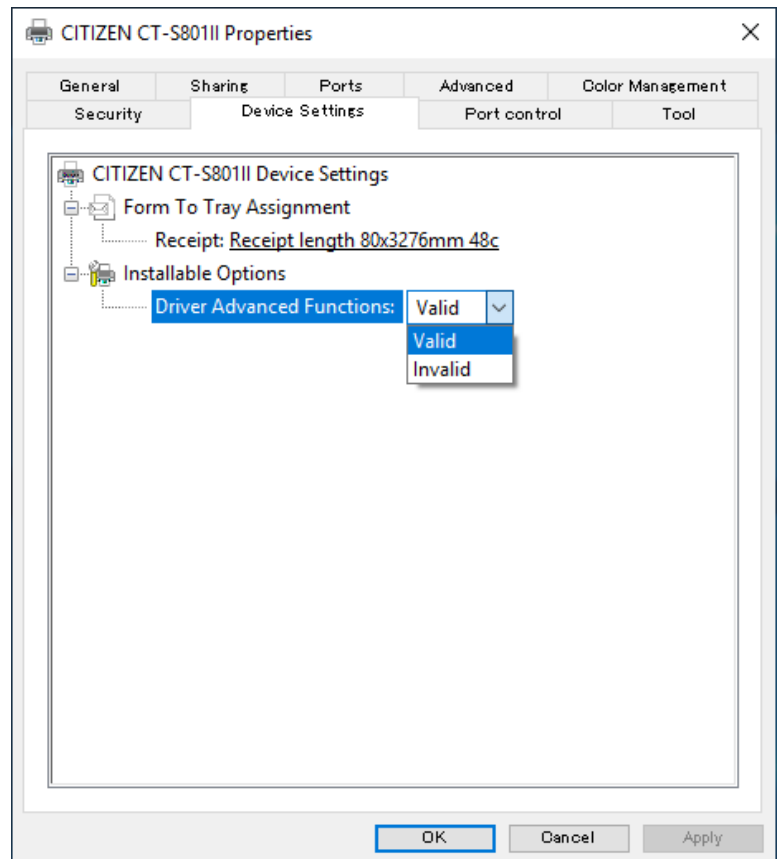
Watermark

Electronic Journal

Upside Down Printing

Coupon Printing

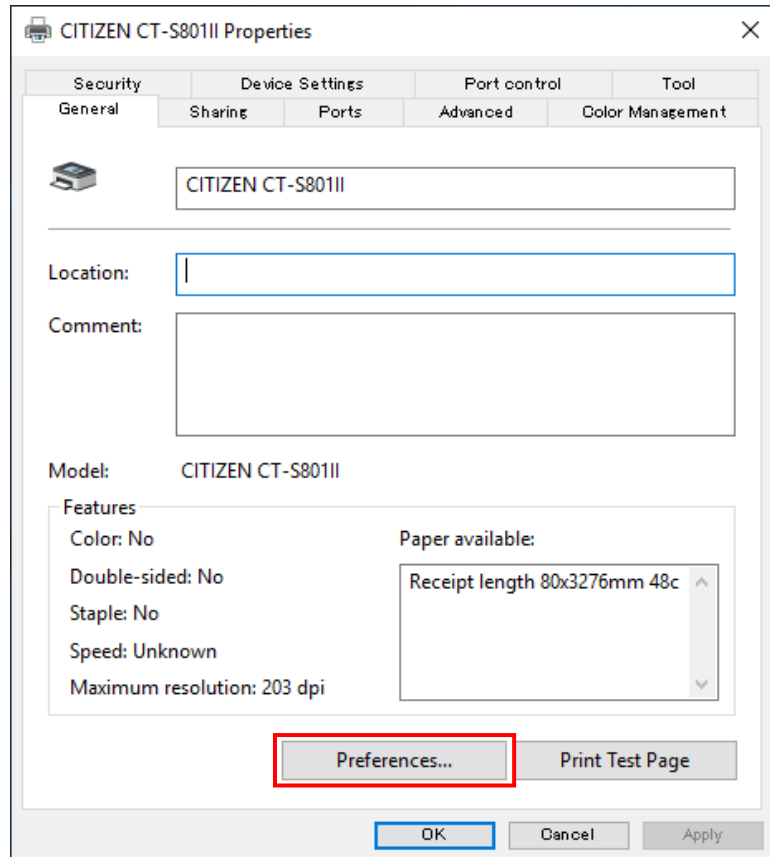
Reprint



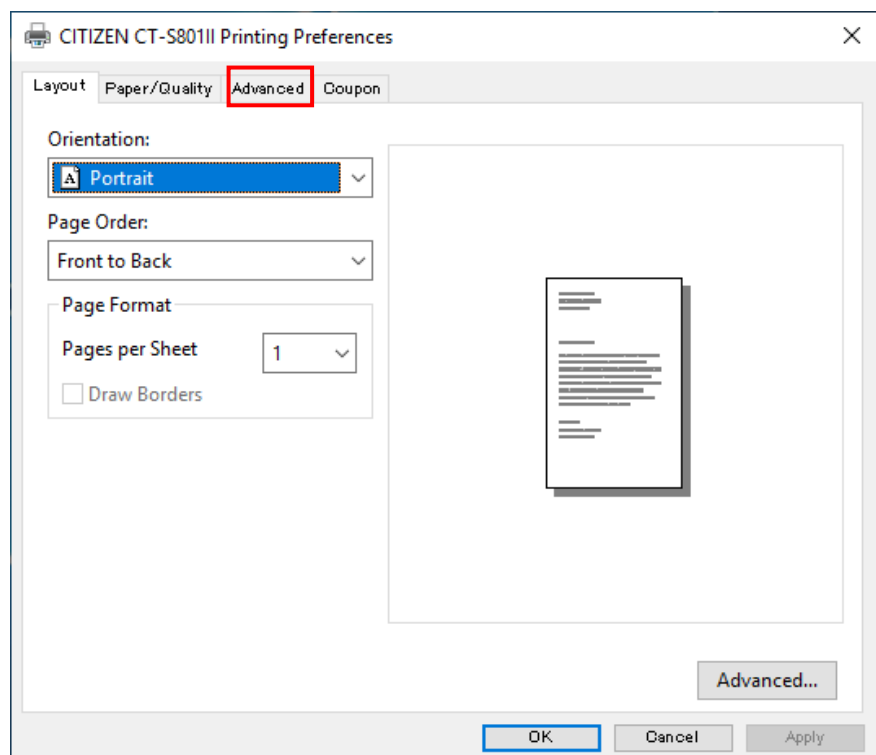
4.3 Electronic Journal Data

Electronic journal is the function to save printed data in the PC. The setting for this function can be done as follows.

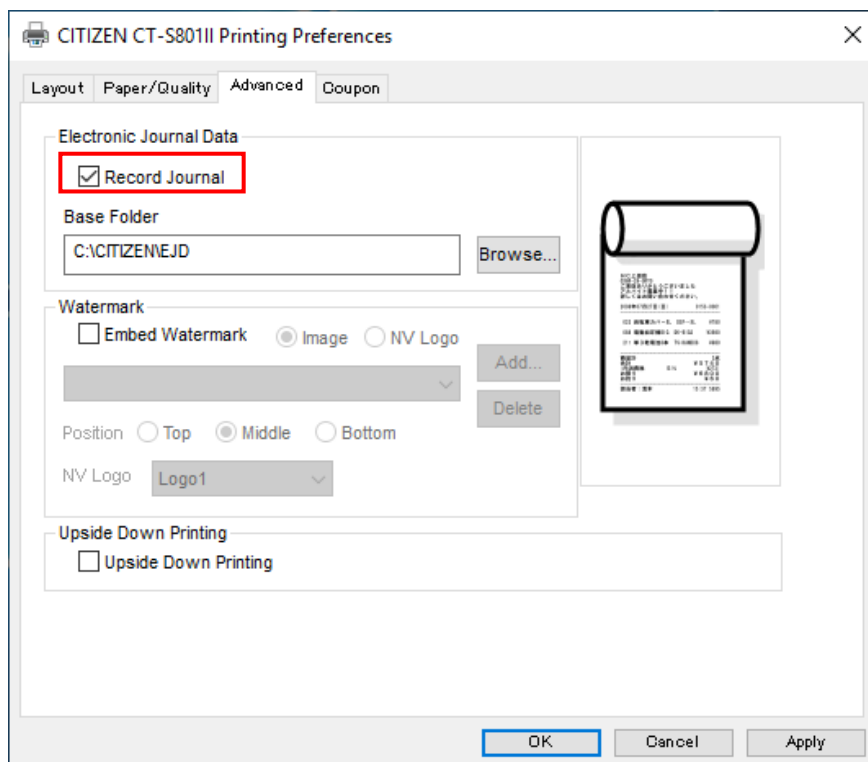
From the Properties of printer driver, choose "Preferences".



Choose "Advanced" tab.



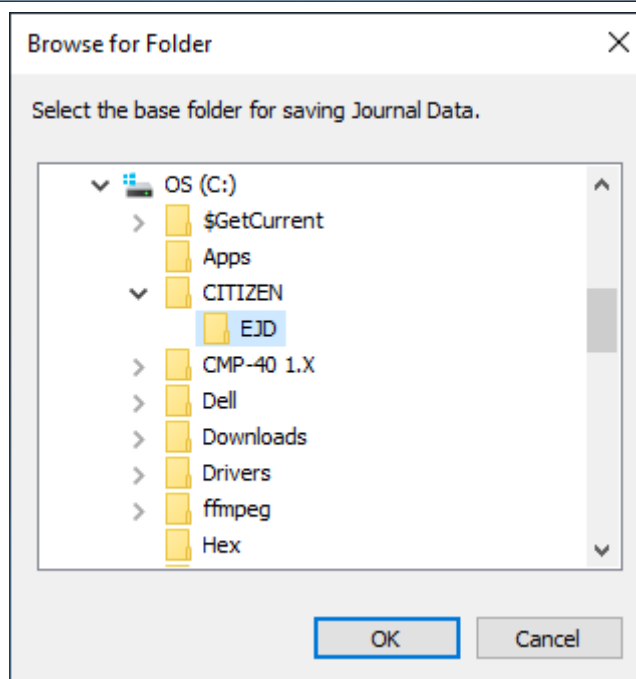
To enable Electronic Journal Viewer function, put the check mark in "Record Journal".



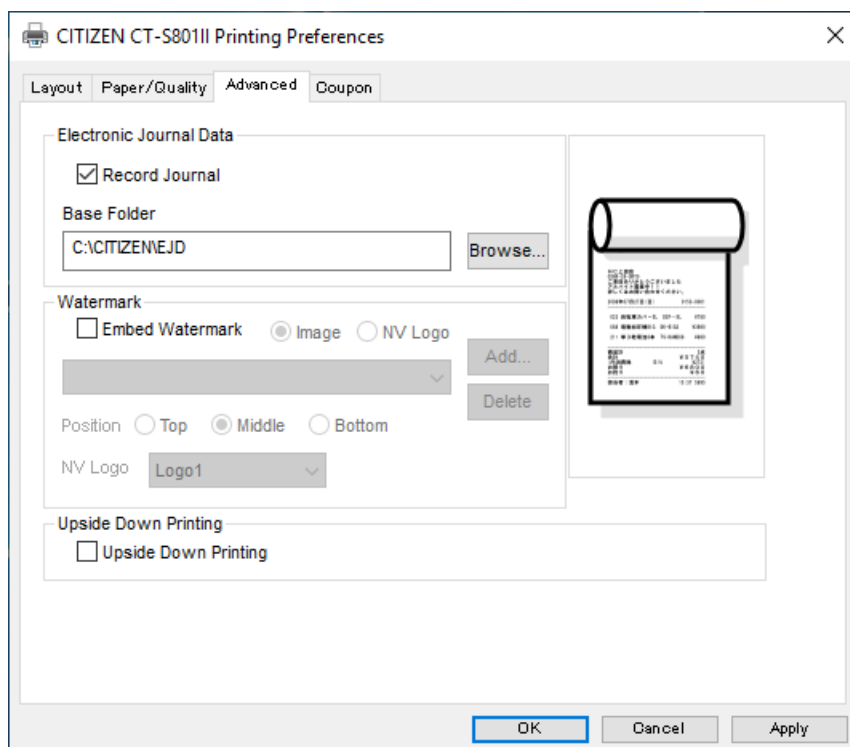
Press "Browse" of Base Folder then you can specify the folder to store the journal data.

Default folder is "c:\CITIZEN\EJD".

If you want to change the folder, please make the folder in advance.

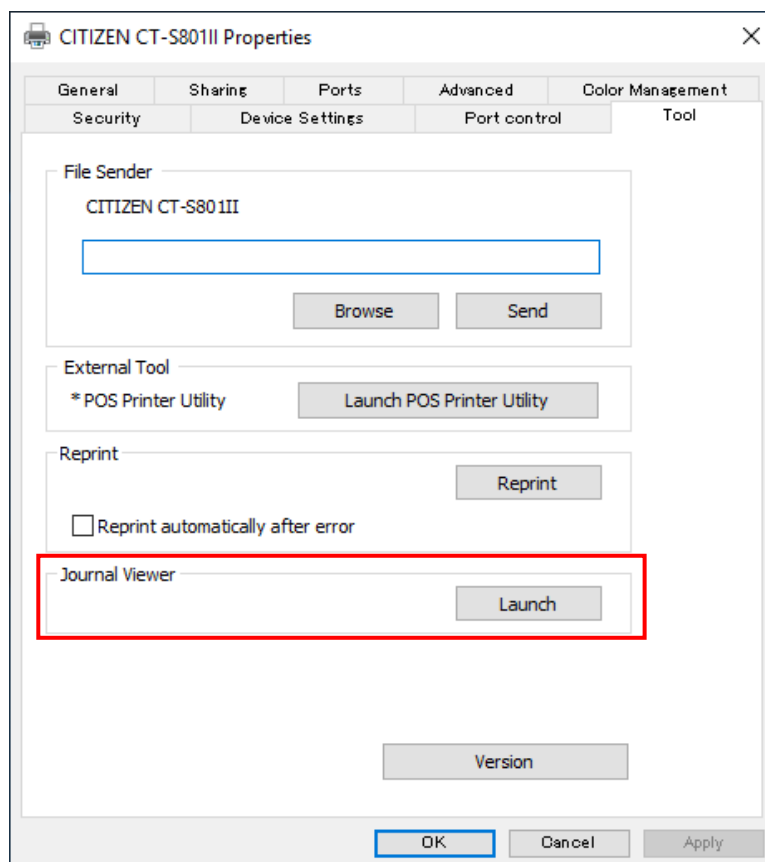


Press "Apply" or "OK" to finish the setting.

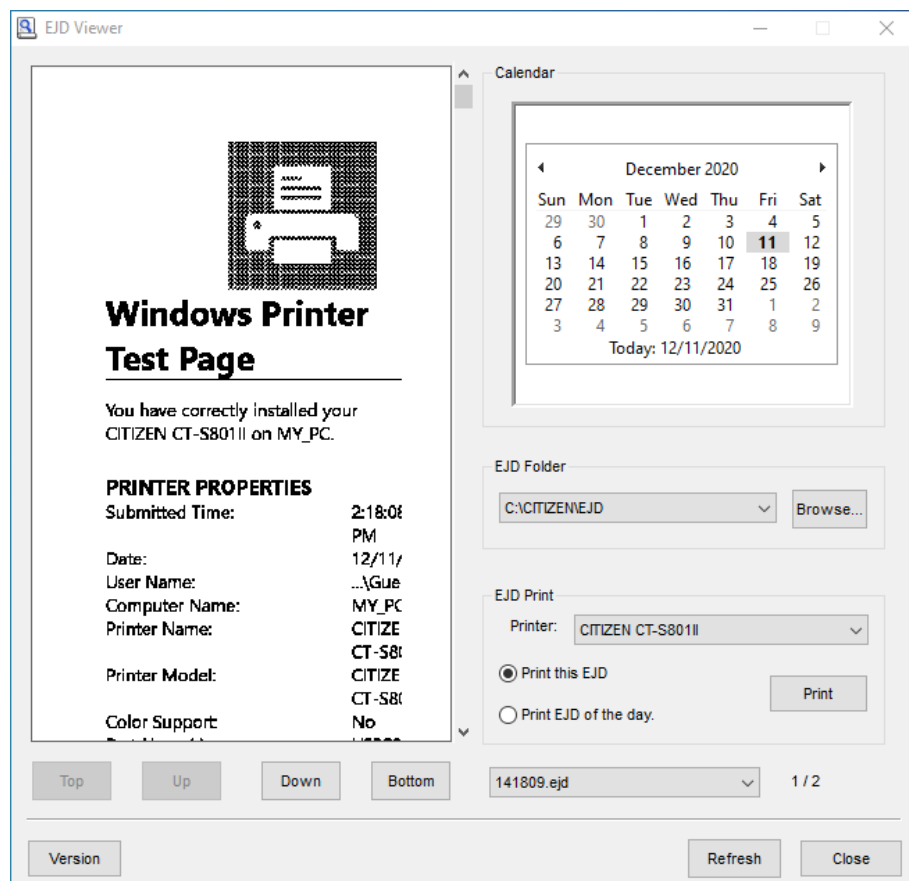


It is possible to display/print electronic journal data from journal viewer.

Choose "Tool" tab and press "Launch" of Journal Viewer



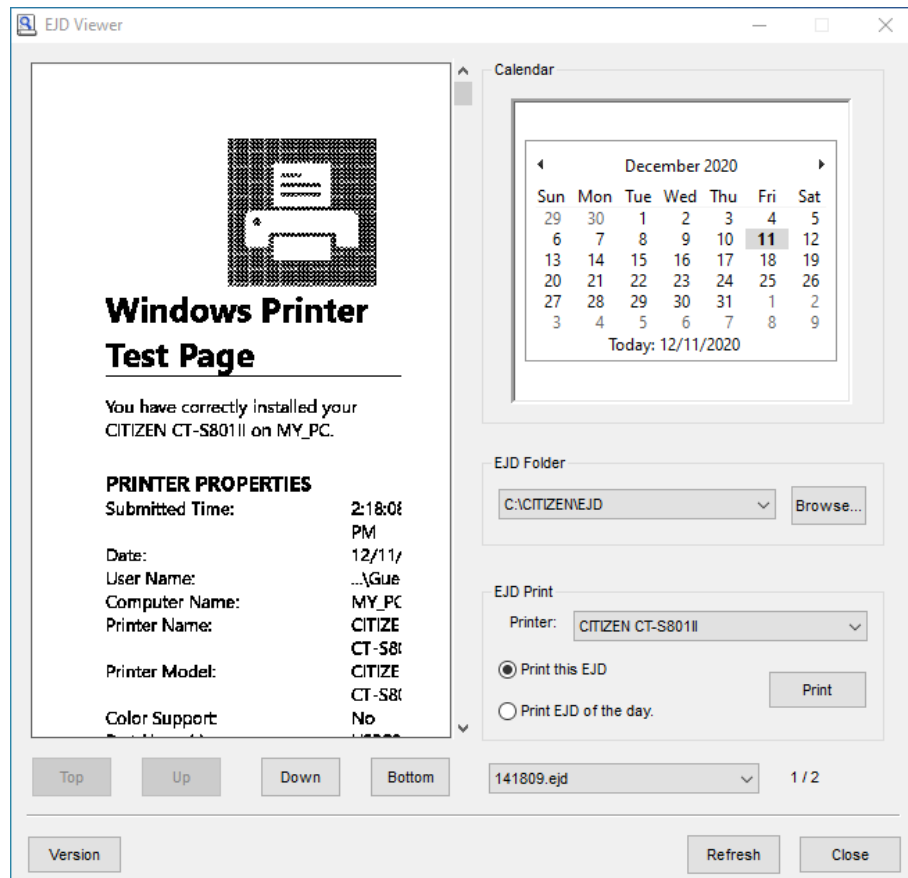
Journal Viewer shows up and you can see journal data in the viewer and the data can be printed from viewer



- * Under the specified folder to save journal data, folders are generated with the name of data in "yymmdd" format and journal data files are saved in the folder with the name of time in "hhmmss.ejd" format.
- * Each print job is saved as individual journal data file.

- * The path length of folder to save journal data must be within 100 characters (Unicode).
- * Do not use network driver for destination folder to save journal data.

4.3.1 Journal Viewer



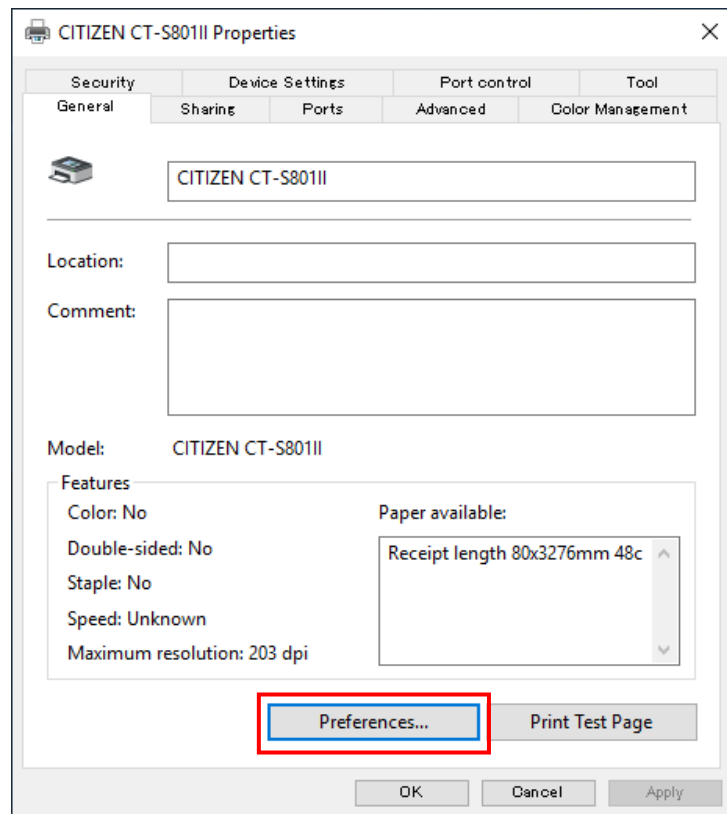
- * Journal data is grouped by folder by the date. It is possible to display or print the journal data of the specified day in "Calendar". There are journal data on the date which is shown in bold in the Calendar.
- * By right-click on the Calendar, the menu to go back today is shown.
- * "EJD Folder" is the folder that the journal data is stored. Usually, it should be same folder as the one that printer driver specifies for saving the journal data. You can choose other folder from drop down list for up to 7 used folders or press "Browse"
- * The image of journal data is shown in the viewer area in the left. By pressing "Top", "Up", "Down" or "Bottom" button, the data shown on the viewer moves to other data in the same day.
- * It is possible to choose the file data directly in the list of the bottom.
- * "Printer" of "EJD Print" shows the printer driver that launches the Journal Viewer.
- * To print journal data, press "Print". There are 2 choices to print journal data. If "Print this EJD" is selected, the data shown on the viewer is printed. If "Print EJD of the day" is selected, all the journal data of the day will be printed altogether without cut between each data.

- * NV logo, printer font and barcode font cannot be shown correctly on the viewer because those are realized by the function of printer side. Substitute image of NV logo, barcode or 2D barcode will replace NV logo data, barcode data and 2D barcode. And generic font replaces printer font on the viewer. Therefore, the impression on the viewer is different from actual printing results.
- * Journal data which include special function like Control font may show garbage character on the viewer.
- *** Please refer to the other section for the details of printer font, barcode font, 2D barcode font or special function.
- * Journal data does not include attribute of upside down printing. It is affected by the setting of the driver to print the journal data.
- * When journal data is generated, cut, drawer and buzzer setting are not included as well. Setting at the printing from journal viewer is applied.
- * The data printed by Reprint function is not recoded as journal data.
- * Data sent to printer by "File Sender" function is not recoded as journal data.
- * Journal viewer shows the data made by other printer driver. If a journal data is printed to different printer driver from original driver that made the journal data, it may not print correctly.

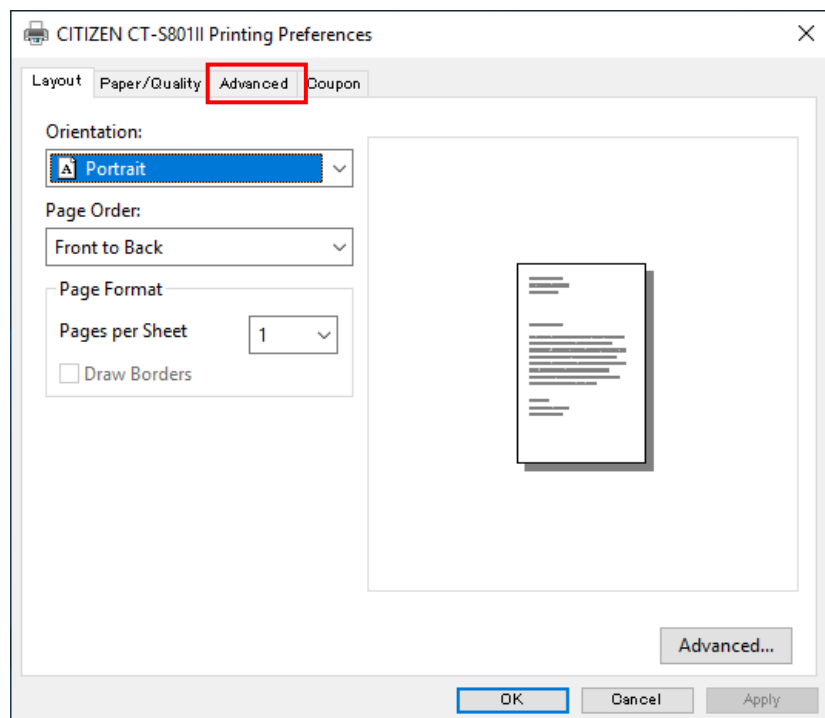
4.4 Watermark

It is possible to print data with overlapping the image data which is specified in advance.

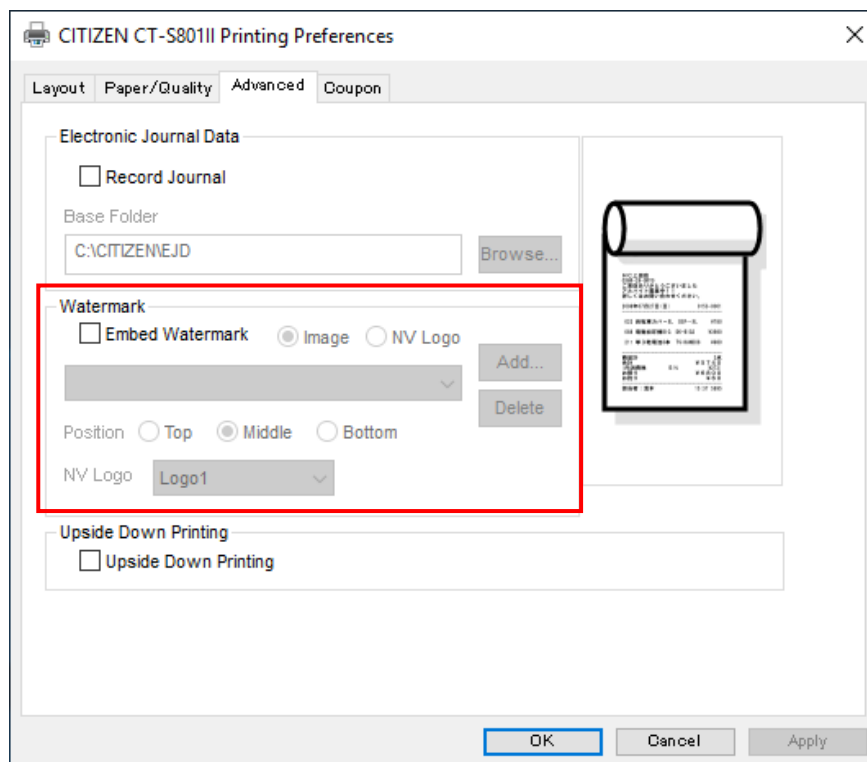
From the Properties of printer driver, choose "Preferences".



Choose "Advanced" tab.



To enable Water mark function, put check mark in "Embed Watermark" and choose either "Image" or "NV Logo". If you choose "Image", press "Add" to specify the watermark image data. Then specify the position of overlapping from "Top", "Middle" or "Bottom". If you choose "NV Logo", choose registered NV logo data (logo1 to logo9). The print data will be overlapped with the logo data.



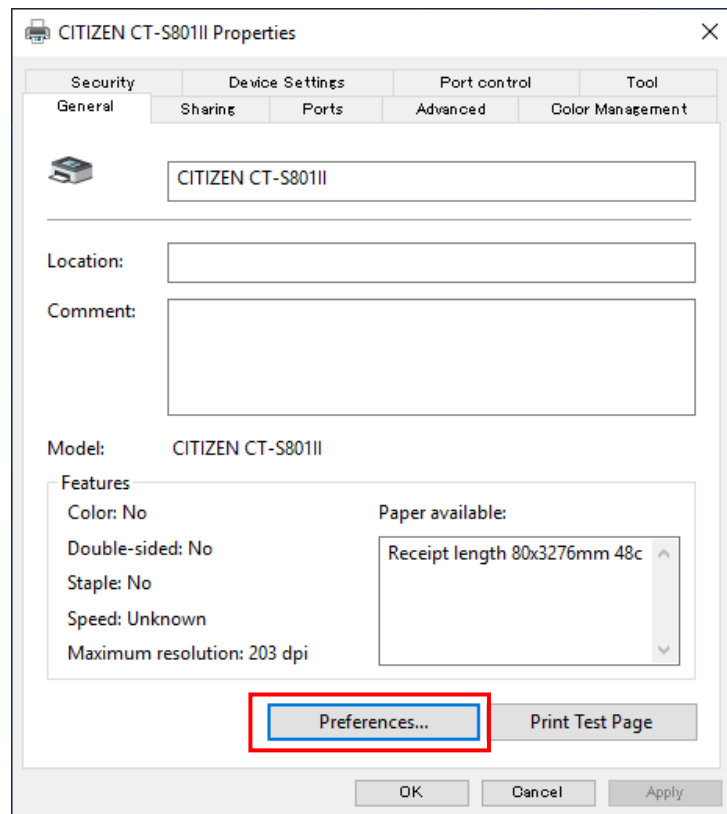
- * The watermark image data to use for overlapping is black/white bitmap format data only.
Gray bitmap (4bpp) can also be registered for grayscale print about Ver. 3.00 or later.
- * Size of watermark image data is limited in horizontally 1023 pixels width. There is no limit for vertical size. Paper size limitation of driver is effective for watermark image size as well.
- * Up to 5 watermark image data can be specified in advance. If you want to more, remove existing data by pressing "Delete" and "Add" new one.
- * For nicer-looking watermark printing, please use the Grayscale printing with both "Image selection" and "NV logo".
- * There is no position of NV logo printing. NV logo water mark will be repeatedly printed.

- * Please note about the limitation of this Watermark function.
- * Based on 24 vertical dots, image block from Windows and watermark image is overlapping、
 - (1) If the received image block is taller than 24 pixels, white gap is generated in the watermark image. Especially, it can be seen in the case to use tall printer font.
 - (2) If the received image block is shorter than 24 pixels, image block is expanded automatically in vertical direction.
- * Barcode font and image data cannot be overlapped.

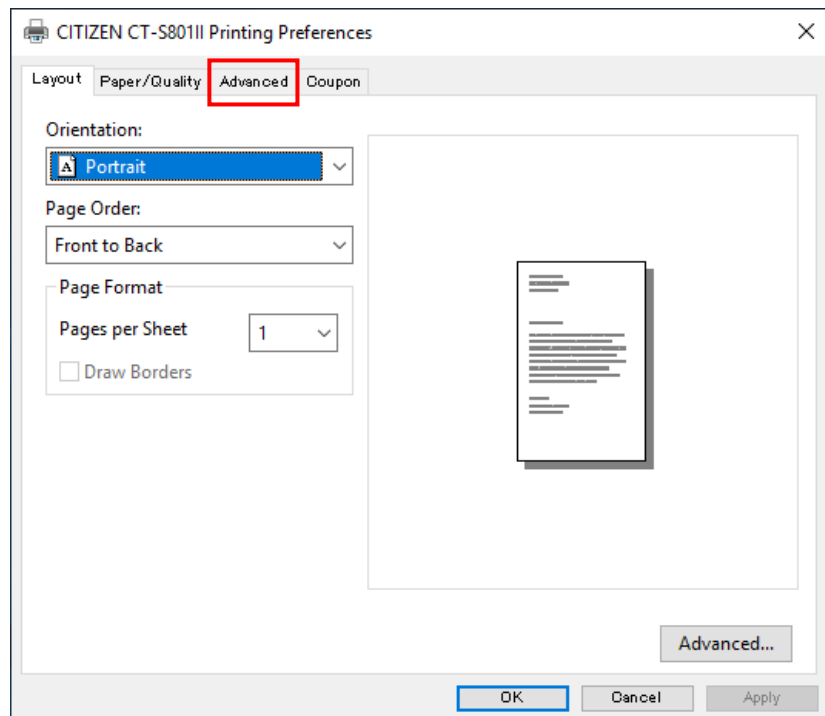
4.5 Upside Down Printing

Printing data in upside down can be done by this function.

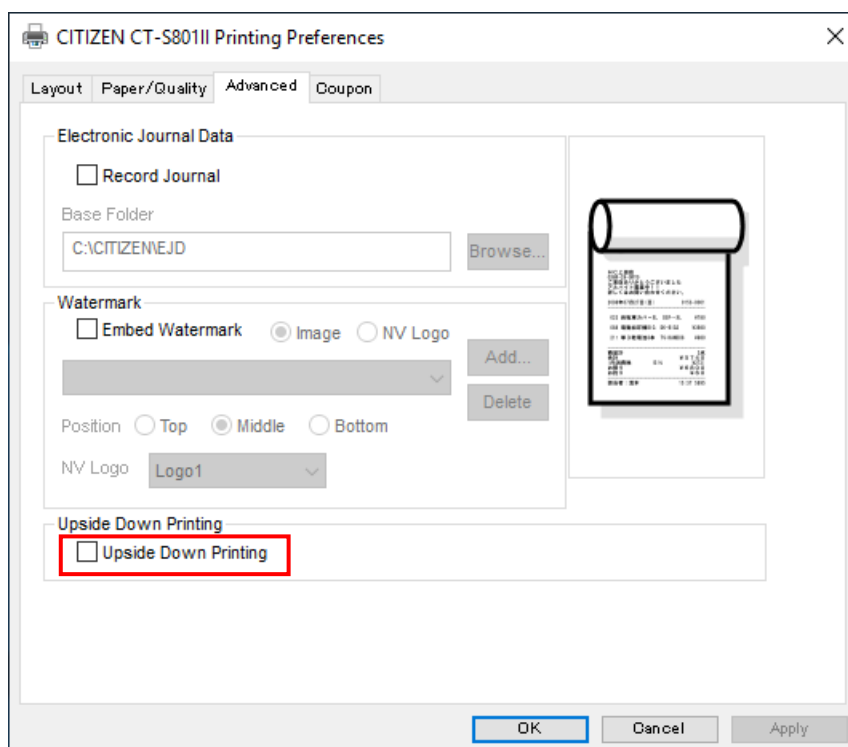
From the Properties of printer driver, choose "Preferences".



Choose "Advanced" tab.



To enable upside down printing, put check mark in "Upside Down Printing".



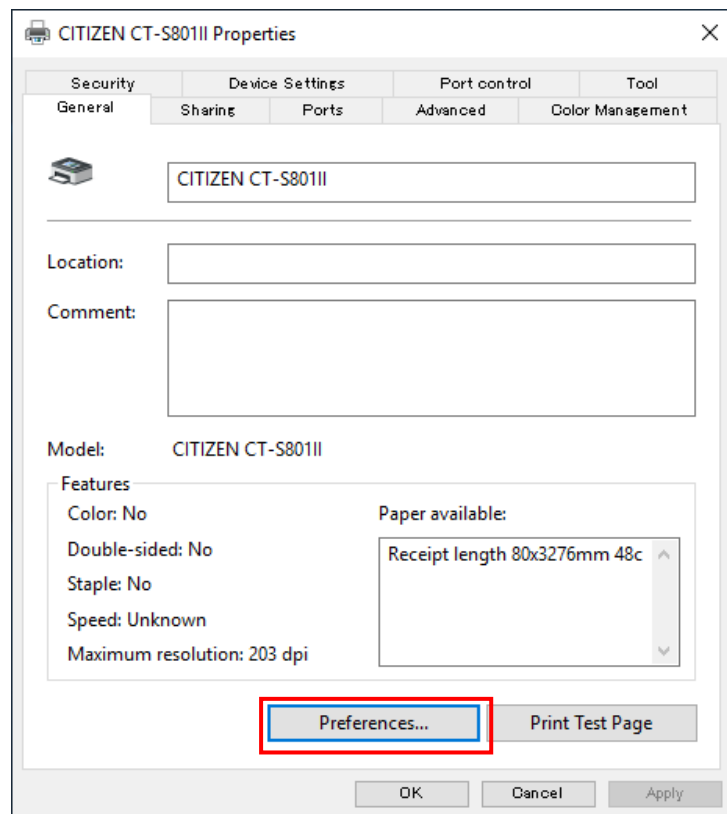
* Printer font is printed upside down as well.

* NV logo saved by "GS (L)" command cannot be printed upside down. Please save the upside down data in advance.

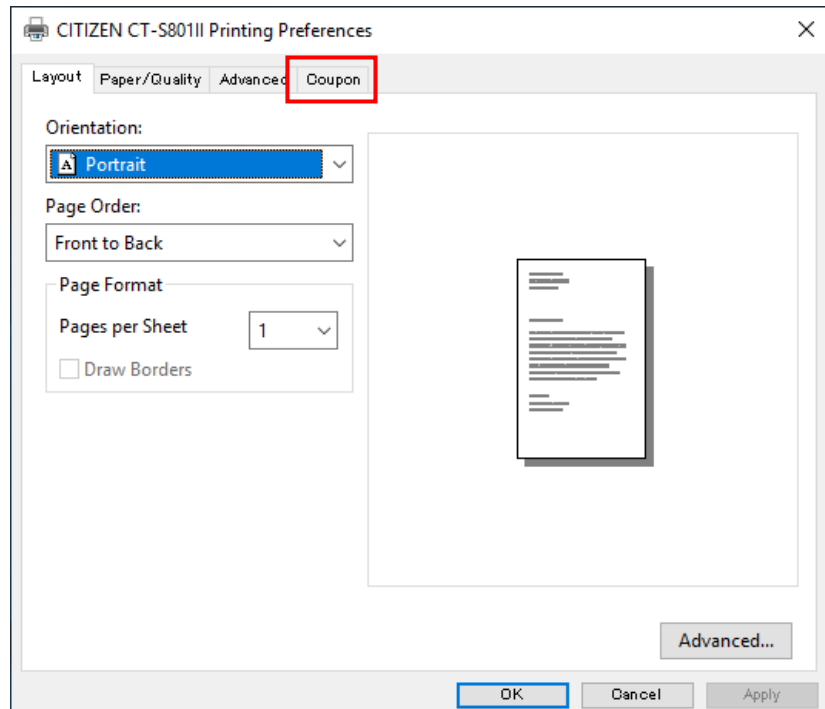
4.6 Coupon printing

Coupon printing is the function like this. Coupon image data is specified to link with a keyword and if the keyword is found in the print data, the coupon image data is printed automatically.

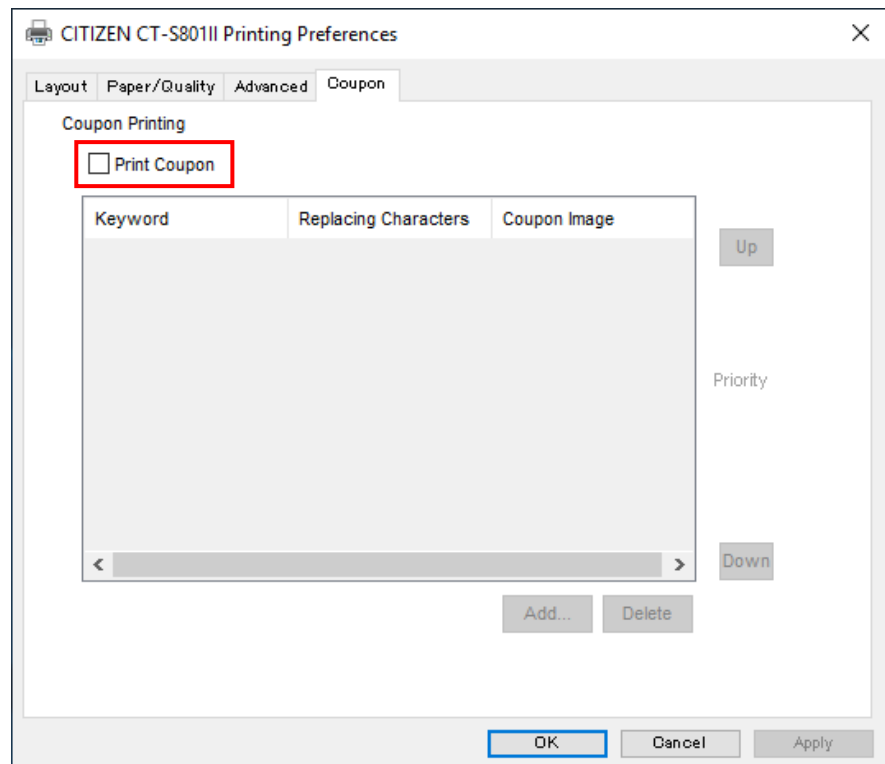
From the Properties of printer driver, choose "Preferences".



Choose "Coupon" tab.



To enable coupon function, check mark in "Print Coupon".



Add "Coupon" information

- * To register the information of the coupon, press "Add". "Add Coupon Information" dialogue shows up. "Keyword", "Replacing Characters" and "Coupon Image" need to be registered on it as a set.
- * Coupon information up to 10 can be registered. Coupon information has to be aligned in priority order. Upper information in the list has higher priority and lower information has lower priority. The order can be changed by "Up" and "Down". Searching Keyword, "Replacing Characters and printing coupon image are done in the priority order.
- * The image data to use for coupon must be in black/white bitmap format but gray (4bpp) bitmap can also be used for gray scale print with the driver Ver. 3.00 or later. Its width must be up to 1023 pixels.
- * If "Keyword", "Replacing Characters" and "Coupon Image" are same, it cannot be registered. If any of them is different, it is handled as new coupon information and can be registered.

Behavior of coupon printing

- * First, characters to correspond with "Keyword" are searched in the print data. When the characters are found, the coupon image data linked with the keyword is set to be printed at the end of print data. Then corresponding characters are replaced by "Replacing Characters"
 - * If multiple coupon information exists, jobs are separated to "Coupon image printing" and "Character replacing".
 - * First, the routine of "Coupon image printing" is performed.
- "Keyword" searching of first coupon information starts from top of print data. If the corresponding characters are found, linked coupon image is printed at the end of printing. Then same routine is repeated from 2nd coupon information to last coupon information. Then the routine of "Replacing character" is performed. "Keyword" searching of first coupon information starts from top of print data.

When the corresponding characters are found, characters are replaced by “Replacing characters” of first coupon information. The same routine is repeated from 2nd coupon information to last coupon information.

- * Because of the above routine flow, the replaced characters in higher priority coupon information can be re-replaced by the low priority coupon information.

*** Limitation of coupon printing function

Limitation of character

- * Character replacing does not work for TrueType font. Choose printer font to replace characters.
- * Character replacing does not work barcode font.
- * Character replacing does not work for “Control” font.
- * Character data with mixed font or with mixed font size cannot be recognized as continuous characters. Therefore, it cannot be found by searching keyword.
- * Characters extending 2 lines cannot be found by searching keyword.
- * Symbol font of TrueType (such as Webdings, MS Extra) cannot be found by searching keyword
- * If the character length of keyword and replacing characters is different
 - "Keyword" > "Replacing Characters": Characters after replaced character moves forward
 - "Keyword" < "Replacing Characters": The characters beyond print width are ignored.

Limitation for the application

- *MS-Word may separate the data even if they are in the same line and using same font and font size. If the character is separated, it cannot be found by searching keyword.
- *AutoCorrect function of MS-Word may change the character such as quotation mark automatically. In such case, it cannot be found by searching keyword.
- *Notepad does not handle device font. Printer font cannot be used for Notepad. Only TrueType can be used. Therefore, replacing characters do not work for Notepad.
- *If left/right margin is set for zero, the characters in margin area may not be printed or deleted. Therefore, such characters may not be found by searching keyword.
- * From VB or VC, it is possible to send more character than print width using method or API. The data beyond print width is ignored and it cannot be found by searching keyword.

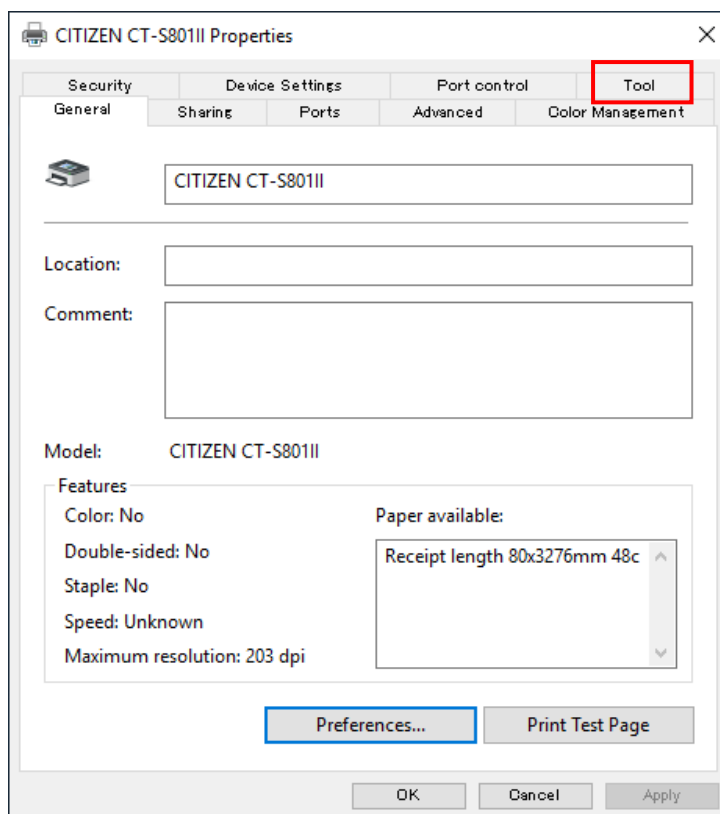
Limitation of coupon printing

- *If the NV log is set to print at the end of print job, coupon is printed after NV logo.
- * In case of multiple page printing, the coupon printing set in the middle page is done after the last page printing.
- *In case of multiple copy printing, coupon is printed at the end of each copy.
- *If the “Ticket is set for Paper Type, coupon is printed after reaching fixed length.
- *If the print direction is set for horizontal, coupon is not printed in horizontal direction.

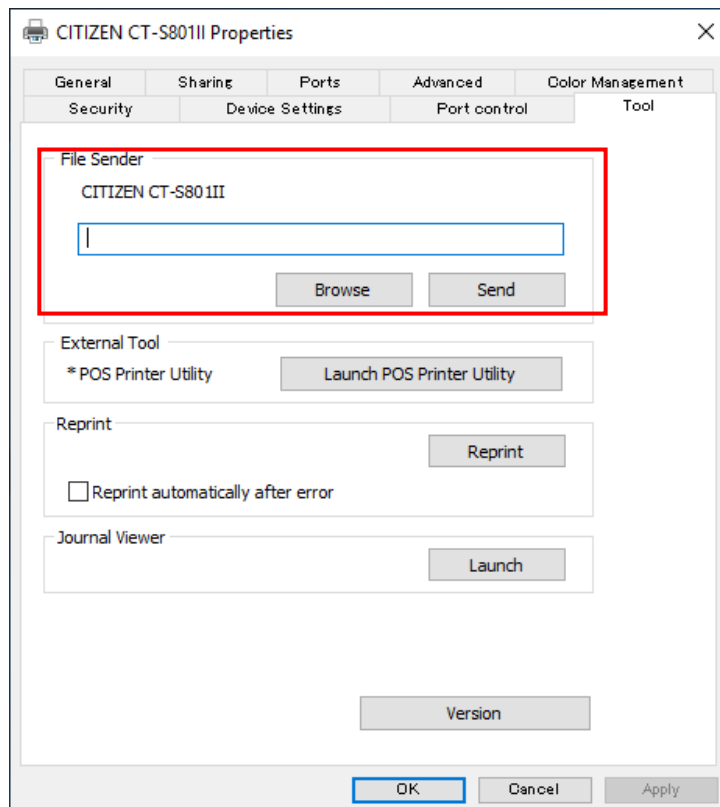
4.7 File Sender

The data file to send to printer can be transmitted to the printer using this function. There is no data added by the driver and the data file itself is simply transmitted to the printer.

From the Properties of printer driver, choose "Tool" tab.



Press "Browse of "File Sender" and specify the file to send to the printer. The data is sent to printer by pressing "Send".

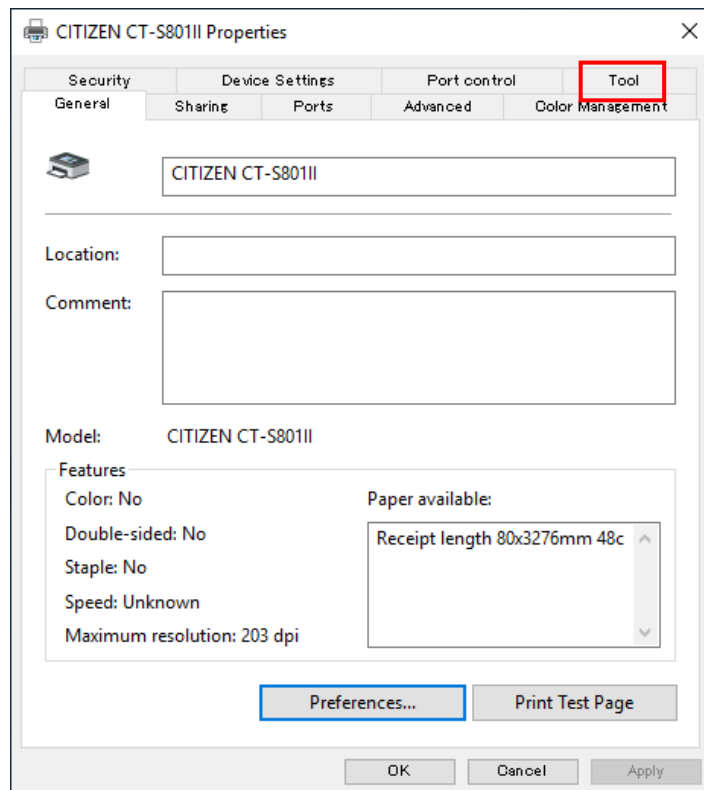


* This function can be used for the purpose such as loading firmware data.

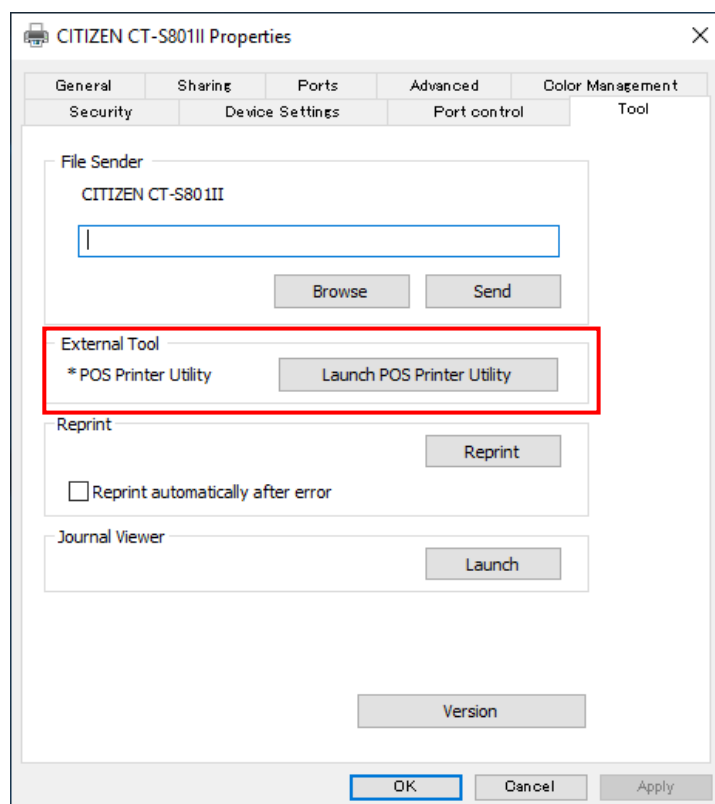
4.8 POS Printer Utility

If the utility software is installed, it can be launched as follows.

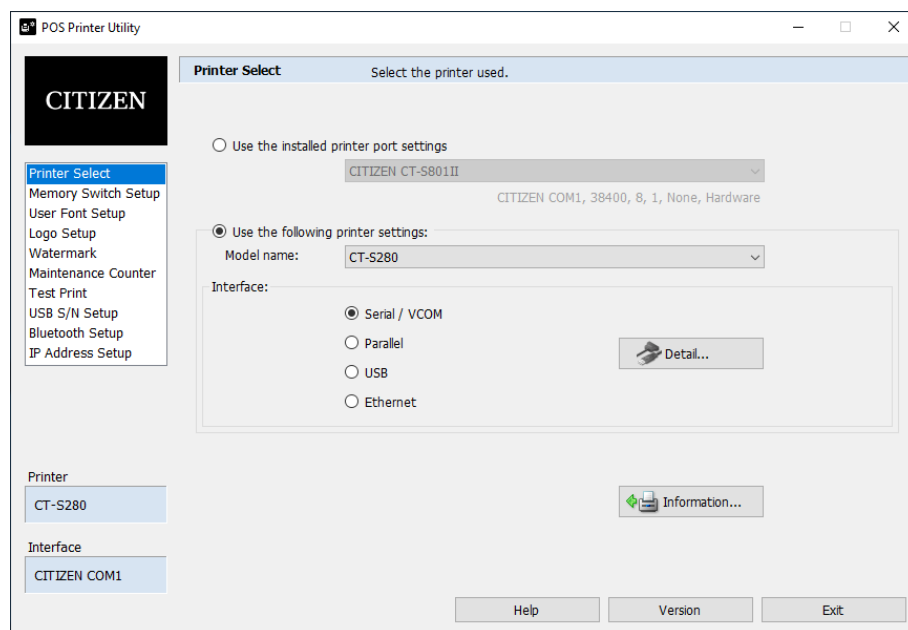
From the Properties of printer driver, choose "Tool" tab.



Press "Launch POS Printer Utility" of "External Tool".



This is the launched screen.
Please refer to the HELP file
of POS Printer Utility for the
details of POS Printer
Utility.



- * Remarks: If the status monitoring function is active, the communication between PC and printer takes longer time.
- * If the driver is installed with status monitoring function enabled through Plug & Play, interface such as parallel or USB, the communication right after the diver installation may fail. In such case, please reboot PC then the communication becomes stable.

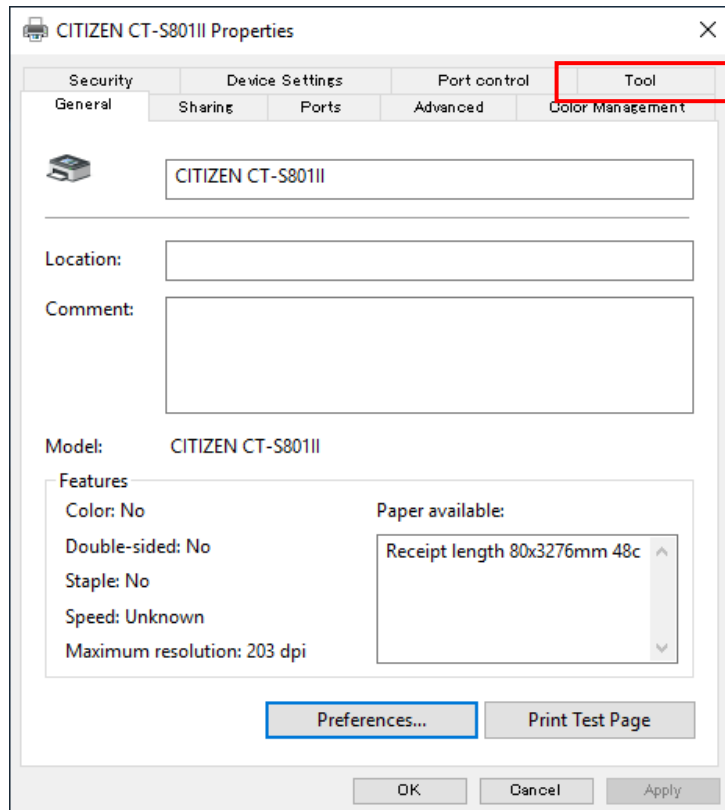
4.9 Reprint

Two methods of reprinting are available.

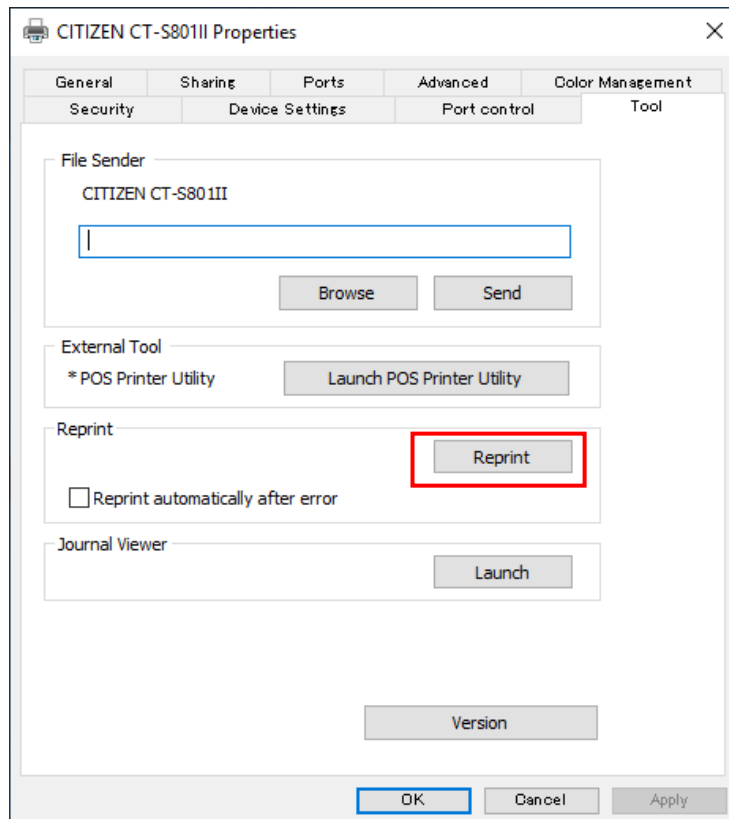
A) Manual reprinting

The last print job can be re-printed manually by this function.

From the Properties of printer driver, choose "Tool" tab.



Press "Reprint" of "Reprint".



- * If printing is done before PC reboot, the last data before the boot can be reprinted.
- * Target of reprint function is 1 print job. If the print data covers more than 1 page, the reprinted data is not the last page but whole print data of last print job.
- * Upside down printing is affected by the setting of upside down at reprint.
- * Reprint data is not handled as Electronic journal data.
- * The print data sent by File Sender cannot be reprinted.

To use this function, journal viewer must be installed.

B) Automatic reprinting on error (Added in 3.6.0.0)

If an error is detected during printing, the driver automatically reprints the data after recovering from the error.

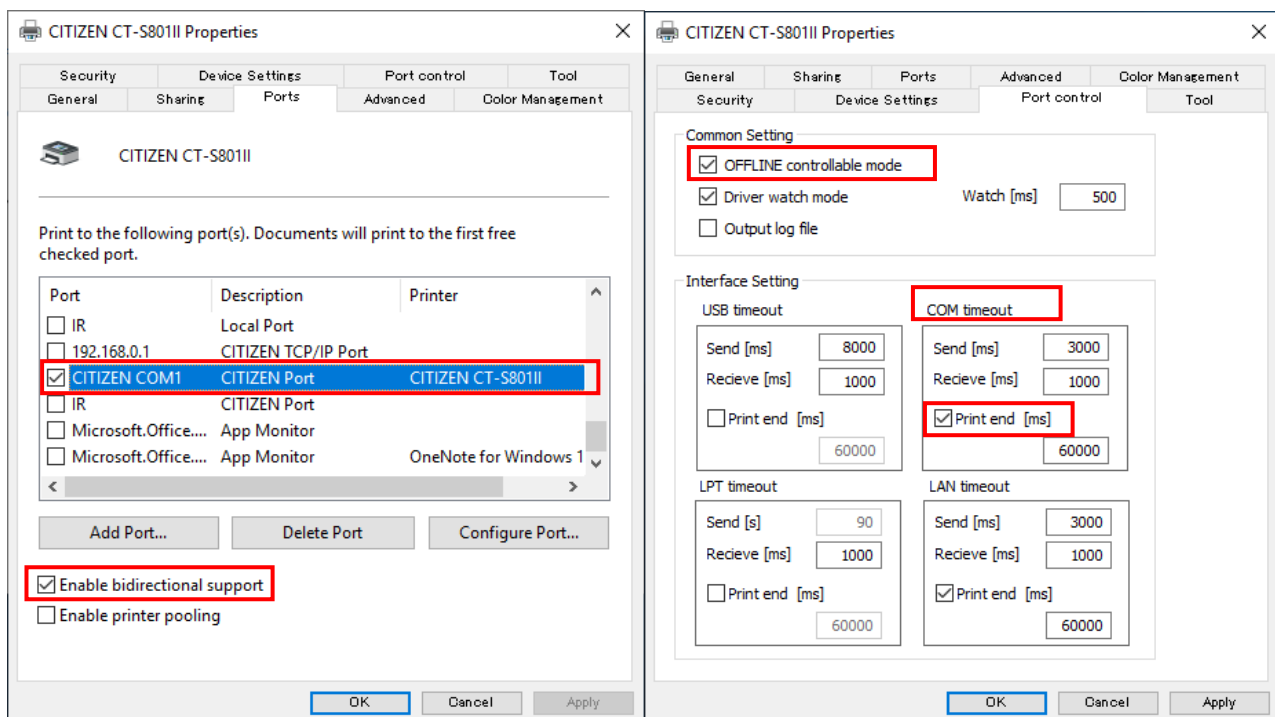
Even if printing is halfway through when the error is detected, the driver will print the same data from the beginning after recovering from the error.

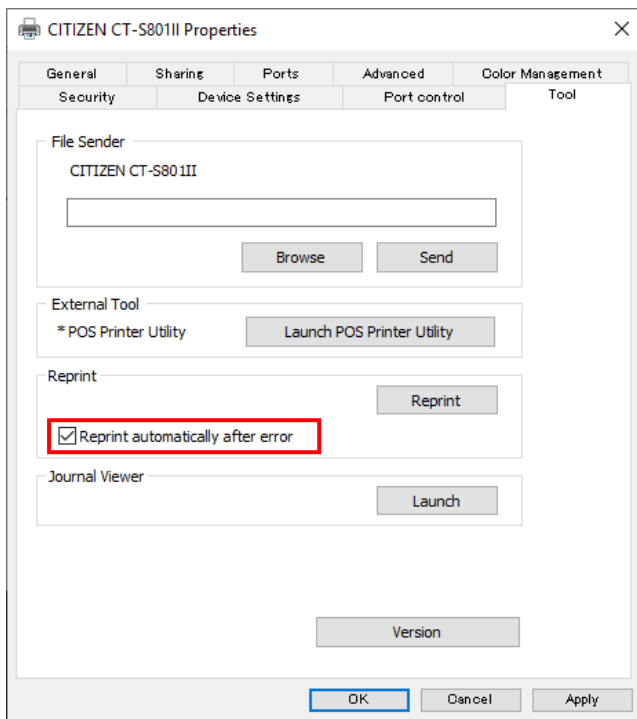
Errors include running out of paper during printing, open cover, and communication cable disconnection.

The conditions under which the automatic reprinting function works are as follows.

- * Port tab: "Enable bidirectional support" is selected.
- * Port control tab: "OFFLINE controllable mode" is selected.
- * Port control tab: "Print end [ms]" of the used port is selected.
- * Tool tab: "Reprint automatically after error" is selected.

When the error is cleared, the time it takes to reprint varies depending on the port and the type of error.





*Because it relies on printer's feature called "automatic buffer clearing on error", drivers for older models are made not to allow selecting "Reprint automatically after error".

*When the error is cleared, the time it takes to reprint varies depending on the port and the type of error.

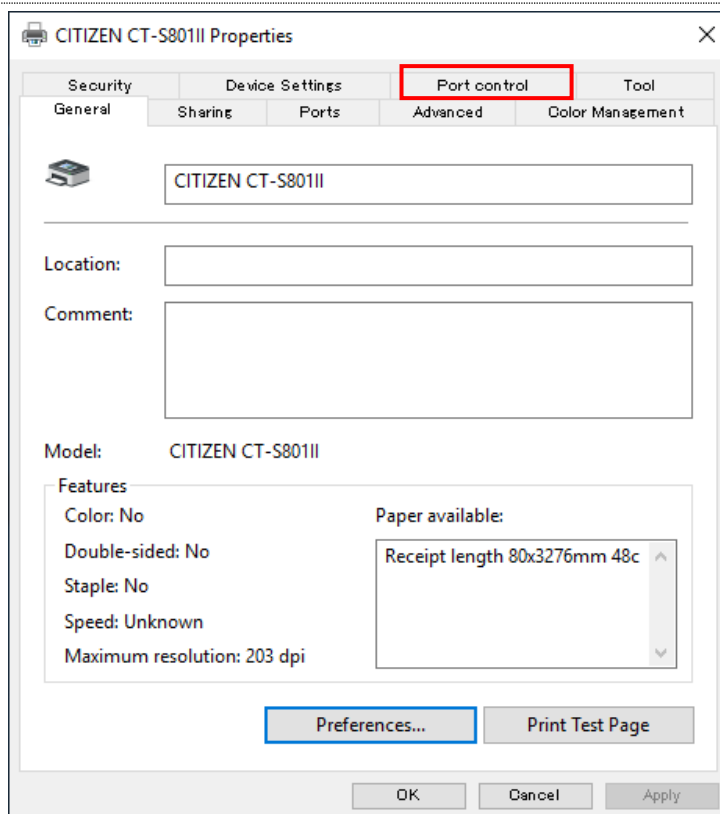
*Depending on the type and timing of the error, the same print job may be executed twice.

*Automatic reprinting will be attempted up to three times, and the print job will be deleted on the fourth failure.

4.10 Driver Port Setting

This is to change the time-out setting etc. for the status monitoring function, when necessary.

From the "Printer properties", choose "Port control" tab.



Change the setting of necessary items.

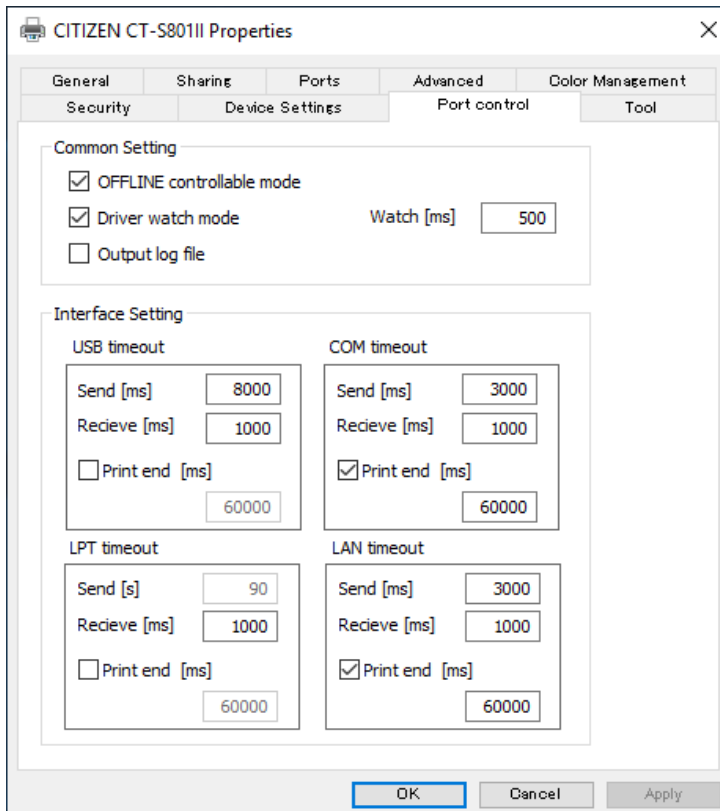
Explanation for each

setting item is in next page.

When the changes are

done, press "OK" or "Apply"

button.



Resetting print spooler is necessary to make the changes effective.

Resetting print spooler can be done as follows.

Older Windows

Start => All Programs =>

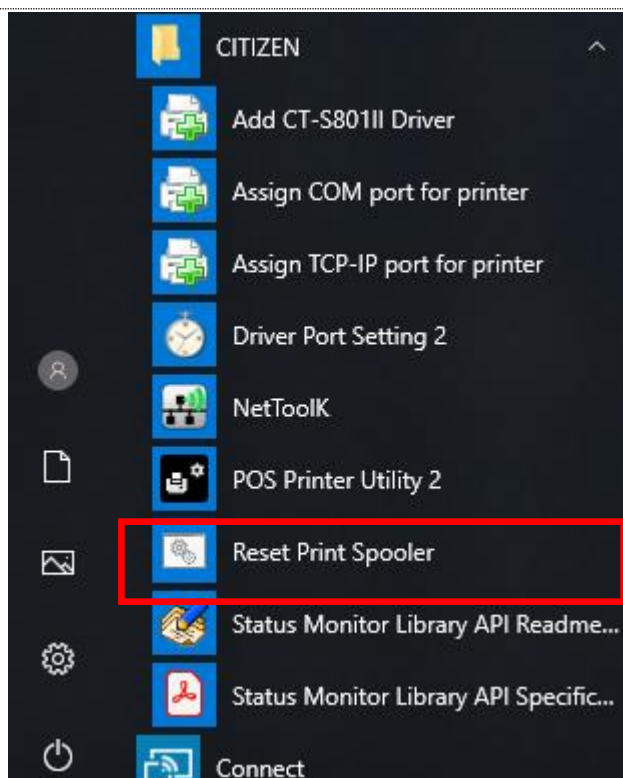
CITIZEN => Driver Port =>

Reset Print Spooler

Windows10

Start =>CITIZEN => Reset

Print Spooler

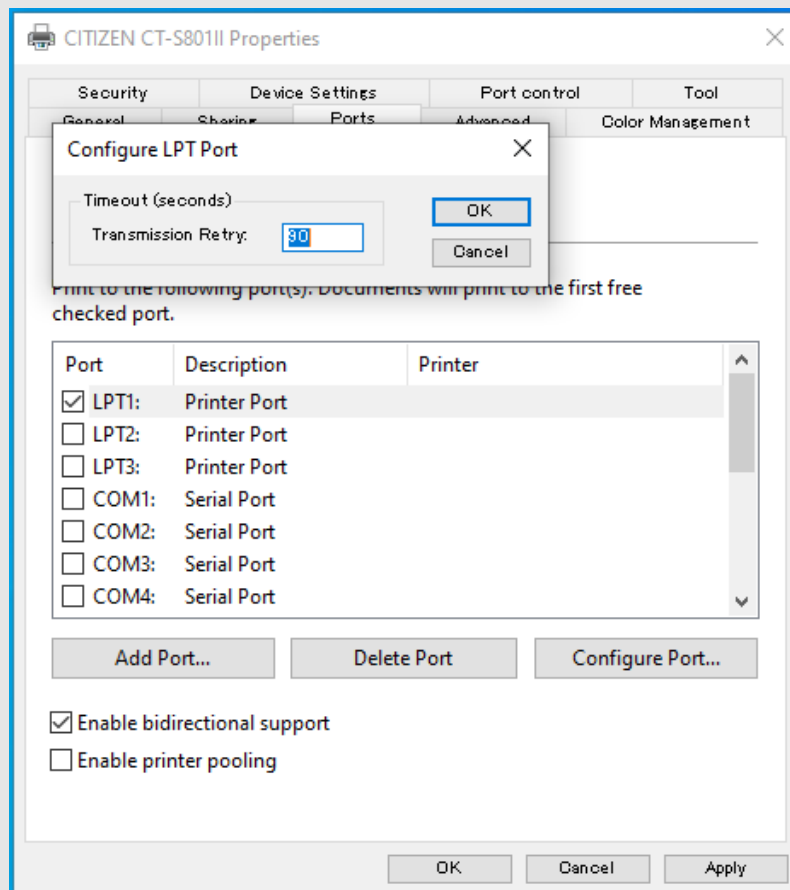


Common Setting

- "OFFLINE controllable mode" is the function to avoid/follow the offline condition when printer error happens. If it is not check-marked, offline condition is avoided.
 - If "Driver Watch Mode" is check-marked, printer status is always monitored and the interval to check the status is fixed by "Watch xxx [ms]". If "Driver Watch Mode" is not check-marked, printer status is monitored only when printer status monitoring API is called by user application. In order to make the change effective, press "OK" button and reset the print spooler as explained above.
- It is recommended to check-mark the "Driver Watch Mode".

Interface Setting

- It is possible to set time-out duration for sending/receiving data through each interface (USB, COM, LPT, LAN)
 - Change the timeout time of each interface arbitrarily and press "OK" button. Then, as described above, in order to reflect the setting change, please reset the print spooler as described above after pressing "OK" button.
 - If you check Print End, print completion check will be done. You can also set the timeout.
- Default values of each interface are set for optimum ones and usually do not need to change. However, the time-out value of LPT is set for 90sec as default of OS and 90 seconds is too long for time-out. When you use LPT, change the value to 5 sec which is recommended value.
 - To set the transmission timeout value of LPT, move to the "Ports" tab, select the LPT port from the list, press the "Configure Port" button, the timeout setting dialog will be displayed, so set the value to 5 seconds.



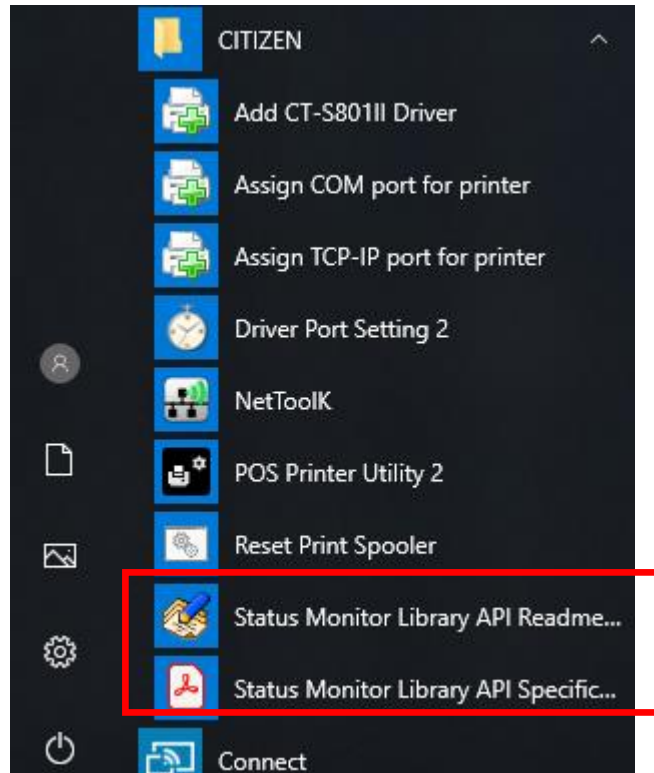
- If you see the difficulty to get printer status, set the sending time-out value larger. Usually, this will make it possible to get the status.

4.11 Status Monitor Library

Status monitoring function offers the own method to get the status from the printer. Using status monitor API from user program, it is possible to get more status information than the status information that OS supplies as standard way. Refer to the Status Monitor Library API specifications for the details. "Readme.txt" shows the place where the sample program is stored.

For older Windows, from Start menu, CITIZEN (=> Driver Port => Status Monitor Library)

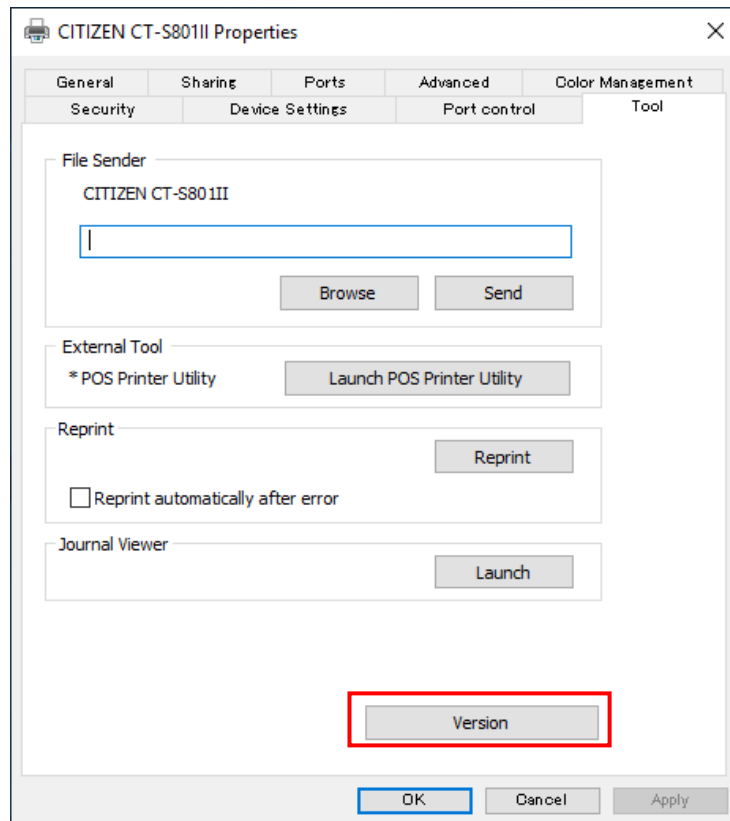
For Windows 10, from Start menu => open "CITIZEN" => it will appear as shown on the right.



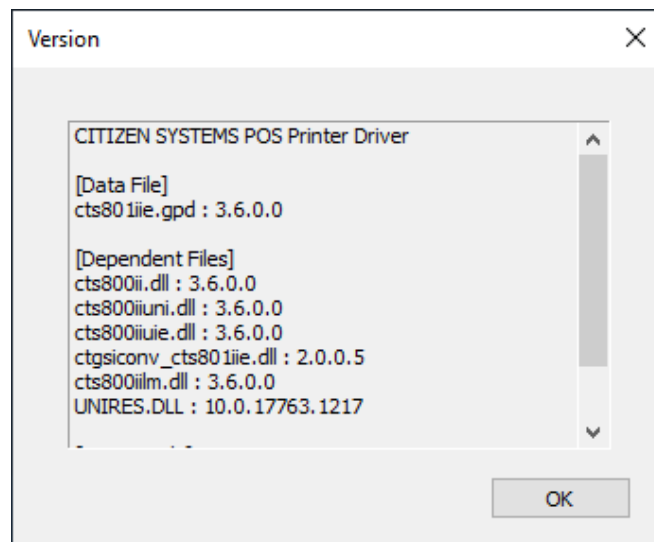
4.12 Version list

List of versions for driver files can be shown.

On "Tool" tab of the printer driver property page, press "Version" button.



Version information is shown for the each file which consists of printer driver.



5. Printer fonts

Printer font is the characters stored in the printer.

Printing by printer font is much faster than printing by TrueType font. Therefore, we recommend using these printer fonts for faster printing.

Following printer fonts can be selected by using Windows driver.

Driver	Font	Font size
CBM1000II	15 cpi	12 / 24 / 36 / 48 / 60 / 72 / 80
CT-D150	15 cpi [Euro]	
CT-D151	15 cpi [Ext.]	
CT-E351	15 cpi [RED Euro]	
CT-E651	15 cpi [RED Ext.]	
CT-S751	15 cpi (RED)	
CT-S280(II)	7.5 cpi	
CT-S281(II)	7.5 cpi [Euro]	
CT-S300	7.5 cpi [Ext.]	
CT-S310	7.5 cpi [RED Euro]	
CT-S310II	7.5 cpi [RED Ext.]	
CT-S601(II)	7.5 cpi (RED)	
CT-S651(II)	3.75 cpi	
CT-S801(III)	3.75 cpi [Euro]	
CT-S851(III)	3.75 cpi [Ext.]	
CT-S2000	3.75 cpi [RED Euro]	
CT-S4000	3.75 cpi [RED Ext.]	
CT-P29x	3.75 cpi (RED)	
PMU2xxx	1.8 cpi	
PMU2xxxIIIPresenter	1.8 cpi [Euro]	
PPU-700	1.8 cpi [Ext.]	
BD2-222x	1.8 cpi [RED Euro]	Font A
BD2-428x	1.8 cpi [RED Ext.]	
	1.8 cpi (RED)	
	20 cpi	
	20 cpi [Euro]	
	20 cpi [Ext.]	
	20 cpi [RED Euro]	
	20 cpi [RED Ext.]	
	20 cpi (RED)	
	10 cpi	
	10 cpi [Euro]	
	10 cpi [Ext.]	
	10 cpi [RED Euro]	
	10 cpi [RED Ext.]	
	10 cpi (RED)	
	5 cpi	
	5 cpi [Euro]	
	5 cpi [Ext.]	
	5 cpi [RED Euro]	
	5 cpi [RED Ext.]	
	5 cpi (RED)	
	2.5 cpi	Font B
	2.5 cpi [Euro]	
	2.5 cpi [Ext.]	
	2.5 cpi [RED Euro]	
	2.5 cpi [RED Ext.]	
	2.5 cpi (RED)	
	25 cpi	
	25 cpi [Euro]	
	25 cpi [Ext.]	
	25 cpi [RED Euro]	
	25 cpi [RED Ext.]	
	25 cpi (RED)	
	12.5 cpi	
	12.5 cpi [Euro]	

	12.5 cpi [Ext.] 12.5 cpi [RED Euro] 12.5 cpi [RED Ext.] 12.5 cpi (RED) 6.25 cpi 6.25 cpi [Euro] 6.25 cpi [Ext.] 6.25 cpi [RED Euro] 6.25 cpi [RED Ext.] 6.25 cpi (RED) 3 cpi 3 cpi [Euro] 3 cpi [Ext.] 3 cpi [RED Euro] 3 cpi [RED Ext.] 3 cpi (RED)		
CBM1000II CT-D150 CT-D151 CT-E351 CT-E651 CT-S751 CT-S280 CT-S281 CT-S300 CT-S310 CT-S310II CT-S601 CT-S651 CT-S801 CT-S851 CT-S2000 CT-S4000 CT-P29x PMU2xxx PMU2xxxIIIPresenter PPU-700 BD2-222x BD2-428x CT-S280II CT-S281II	FontA11 FontA11 [255] FontA11 [Ext.]	Font A	9.5
	FontA12 FontA12 [255] FontA12 [Ext.]		19
	FontA21 FontA21 [255] FontA21 [Ext.]		9.5
	FontA22 FontA22 [255] FontA22 [Ext.]		19
	FontA24 FontA24 [255] FontA24 [Ext.]		38.5
	FontA42 FontA42 [255] FontA42 [Ext.]		19
	FontA44 FontA44 [255] FontA44 [Ext.]		38.5
	FontA48 FontA48 [255] FontA48 [Ext.]		77
	FontA84 FontA84 [255] FontA84 [Ext.]		38.5
	FontA88 FontA88 [255] FontA88 [Ext.]		77
	FontB11 FontB11 [255] FontB11 [Ext.]	Font B	7 (CT-S3x0/6x1(II)/8x1(II)) 9.5 (Other models)
	FontB12 FontB12 [255] FontB12 [Ext.]		13.5 (CT-S3x0/6x1(II)/8x1(II)) 19 (Other models)
	FontB21 FontB21 [255] FontB21 [Ext.]		7 (CT-S3x0/6x1(II)/8x1(II)) 9.5 (Other models)
	FontB22 FontB22 [255] FontB22 [Ext.]		13.5 (CT-S3x0/6x1(II)/8x1(II)) 19 (Other models)
	FontB24 FontB24 [255] FontB24 [Ext.]		27 (CT-S3x0/6x1(II)/8x1(II)) 38.5 (Other models)
	FontB42 FontB42 [255] FontB42 [Ext.]		13.5 (CT-S3x0/6x1(II)/8x1(II)) 19 (Other models)
	FontB44		27 (CT-S3x0/6x1(II)/8x1(II))38.5

	FontB44 [255] FontB44 [Ext.]		(Other models)
	FontB48 FontB48 [255] FontB48 [Ext.]		54.5 (CT-S3x0/6x1(II)/8x1(II)) 77 (Other models)
	FontB84 FontB84 [255] FontB84 [Ext.]		27 (CT-S3x0/6x1(II)/8x1(II)) 38.5 (Other models)
	FontB88 FontB88 [255] FontB88 [Ext.]		54.5 (CT-S3x0/6x1(II)/8x1(II)) 77 (Other models)
	Control		12
CD-S500 series	16 cpi 16 cpi [Euro] 16 cpi [Ext.] 16 cpi [RED Euro] 16 cpi [RED Ext.] 16 cpi (RED) 8 cpi 8 cpi [Euro] 8 cpi [Ext.] 8 cpi [RED Euro] 8 cpi [RED Ext.] 8 cpi (RED)	7x9 dot	12 / 24 / 36 / 48 / 60 / 72 / 80
	12 cpi 12 cpi [Euro] 12 cpi [Ext.] 12 cpi [RED Euro] 12 cpi [RED Ext.] 12 cpi (RED) 6 cpi 6 cpi [Euro] 6 cpi [Ext.] 6 cpi [RED Euro] 6 cpi [RED Ext.] 6 cpi (RED)	9x9 dot	
	FontA11 FontA11 [255]	7x9 dot	9
	FontA12 FontA12 [255]		18
	FontA21 FontA21 [255]		9
	FontA22 FontA22 [255]		18
	FontB11 FontB11 [255]	9x9 dot	9
	FontB12 FontB12 [255]		18
	FontB21 FontB21 [255]		9
	FontB22 FontB22 [255]		18
	Control		12

- * The difference of "xx cpi", "xx cpi [Euro]" and "xx cpi [Ext.]" is characters/functions assigned to 80 ~ FF hex. The details of difference are as follows.

Font	80-9F(hex)	A0-FF(hex)
xxx cpi	Special function	WPC1252
xxx cpi [Euro]	WPC1252	
xxx cpi [Ext.]	Code Page 437	

Special function: Special functions are assigned. (Refer to section 9 for the special functions.)

Windows Code: Characters from Windows code table are assigned.

Code Page 437: Characters from code page 437 are assigned.

- * "xx cpi", "xx cpi(RED)" font: If the number is smaller, character width is larger. 4 different sizes (Standard size, x2/x4/x8 width) can be chosen from each font. For example, "7.5 cpi" is double width font of "15 cpi".
- * Standard font size of "xx cpi", "xx cpi(RED)" is 12. If the number is larger, character is taller.
- * "FontAxx (Bxx)" font: xx means size of height and width.
For example, FontA48 is based on font A and 4 times high and 8 times wide from standard size 11.
- * Line pitch by "xx cpi" and by "FontAxx (FontBxx)" are different because the font size is different.
- * Supported characters by the driver are based on WPC1252 codepage. The font with [255] uses characters (80h – FFh) defined by user.
- * The font with (RED) is to print in 2 colors (usually black and red). But it requires correct memory switch setting and paper for 2 color printing.
- * If printing direction is set for Landscape (Horizontal), printer font cannot be printed.
- * "Control" font is only for special functions and not for printing. Please refer to the section of "Special functions" for the details. (We do not guarantee the correct functioning of special functions.)
- * The function of centering or right aligning by application software does not work with the driver.
- * If the print data for printer font is longer than one line, extra part is basically ignored but in some case, one character may be printed in next line. Please do not send the longer data than one line.
- * Printer font name contains space. Please be careful.

Example ("· " mean the space.)

"15· cpi"

"15· cpi· [Euro]"

"15· cpi· [Ext.]"

"15· cpi· [RED· Euro]"

"15· cpi· [RED· Ext.]"

"15· cpi· (RED)"

"FontA11· [255]"

"FontA11· [Ext.]"

- * For Grayscale printing, printer font can't be used.

6. Barcode

Using following font, barcode can be printed on the printer.

Barcode font	Font size
Codabar	20 / 40 / 42 / 60 / 64 / 80 / 84
Code128	20 / 40 / 42 / 60 / 64 / 80 / 84
Code39	20 / 40 / 42 / 60 / 64 / 80 / 84
Code93	20 / 40 / 42 / 60 / 64 / 80 / 84
JAN13 (EAN)	20 / 40 / 42 / 60 / 64 / 80 / 84
JAN8 (EAN)	20 / 40 / 42 / 60 / 64 / 80 / 84
ITF	20 / 40 / 42 / 60 / 64 / 80 / 84
UPC-A	20 / 40 / 42 / 60 / 64 / 80 / 84
UPC-E	20 / 40 / 42 / 60 / 64 / 80 / 84

- *This barcode printing utilizes the printer function on the printer.
- * Size of barcode can be selected by choosing font size.
- * As mentioned in previous section, HRI character can be printed above, below or both.
- * The wider barcode than printing width cannot be printed.
- * Each barcode has limitation of characters to use. Please refer to Command reference.
- * The sub code set type A/B/C for Code128 should be specified as {A, {B, {C prior to the print data.
- * The data for sub code set C of Code128 is printed in decimal address of the input character.
For example, Input data "1" => Output 49 ("1" address = 31h = 49dec)
- * Printer font and barcode cannot be printed in the same line.
- * The function of centering or right aligning by application software does not work with the driver.
- * As this function utilizes the printer's internal function, barcode image cannot be shown on the Windows application software. The barcode data is shown instead.
- * If printing direction is set for Landscape (Horizontal), barcode cannot be printed.
- * In the font name of "JAN13 (EAN)" and "JAN8 (EAN)", a space is included before the "(".
Example (" " means a space)
"JAN13 (EAN)"
"JAN8 (EAN)"
- * For Grayscale printing, printer font can't be used.

7. 2D Barcode

7.1 Format of the 2D barcode font

2 dimensional barcode symbolizes (QR code and PDF417) can be printed by following printer fonts of this driver.

2D Barcode font	Font size	Function	Control character	Description
QR_CONTROL	9.5	QR code command setting	_M1	Specify QRCode for model 1.
			_M2	Specify QRCode for model 2.
			_W01 ~ _W16	Set the module width of QRCode. From 1 to 16 dots.
			_EL	Set error correction level L. Restoration ability 7%.
			_EM	Set error correction level M. Restoration ability 15%.
			_EQ	Set error correction level Q. Restoration ability 25%.
			_EH	Set error correction level H. Restoration ability 30%.
			_N****	Number of QRCode data. Specify the figure of four digits. From 0000 to 7089.
			_P	Print QRCode data.
QR_DATA	9.5	QR code data setting	None	Specify the encoded QR data.
PDF417_CONTROL	9.5	PDF417 command setting	_D00 ~ _D30	Set the number of digits of PDF417. 00 is processed automatically. Process by the number of specified digits excluding 00.
			_S00 ~ _S03 ~ _S90	Set the number of steps of PDF417. 00 is processed automatically. Process by the number of specified steps excluding 00.
			_W2 ~ _W8	Set the module width of PDF417.
			_H2 ~ _H8	Set the height of the step of PDF417
			_e0 ~ _e8	Specify the error correction level. From 0 to 8.
			_E01 ~ _E40	Specify the error correction level by the calculation.
			_T0 ~ _T1	Cancel simple PDF417. Specify simple PDF417.
			_N*****	Number of PDF417 data. Specify the figure of four digits. From 0000 to 7089.
			_P	Print PDF417 data.
PDF417_DATA	9.5	PDF417 data setting	None	Specify the encoded PDF417 data.

*The data number to use for 2D barcode is 7089 bytes for QR code and 65532 bytes for PDF417. However, if the size of symbolized 2D barcode is larger than print area of the printer, it will not be printed.

*Center alignment or left alignment function supported by the application software cannot work correctly

with 2D barcode font.

*As the 2D barcode font is the function of the driver, 2D barcode image cannot be shown on the application software or print preview on the Windows. Only print data is shown as text.

*If Orientation is set for Landscape on the printer, 2D barcode cannot be printed.

*Printer font cannot be used by Visual Basic.Net, Visual C.Net

* For Grayscale printing, printer font can't be used.

7.2 2D Barcode Font Usage

The steps to print 2D barcode are as follows.

a) 2D barcode format setting (Using QR_CONTROL, PDF417_CONTROL font)

b) 2D barcode data setting (Using QR_DATA, PDF417_DATA font)

c) 2D barcode print command (Using QR_CONTROL, PDF417_CONTROL font + "_P")

* 2D barcode data number setting (_N**** of QR_CONTROL, _N***** of PDF417_CONTROL) must be done before 2D barcode data setting (QR_DATA, PDF417_DATA).

Followings are sample program by Visual Basic to use 2D barcode font.

```
' Set the format of the QRCode.
'model2, module width 2, error level M, number 33 of QR data.
Printer.FontSize = 9.5
Printer.FontName = "QR_CONTROL"
Printer.Print "_M2_W02_EM_N0033";

' Specify the encoded QR data.
Printer.FontSize = 9.5
Printer.FontName = "QR_DATA"
Printer.Print "http://www.citizen-systems.co.jp/";

'Print QRCode data.
Printer.FontSize = 9.5
Printer.FontName = "QR_CONTROL"
Printer.Print "_P";

Printer.EndDoc


'Set the format of the PDF417.
'digit 3, step automatically, module width 3, step height 3, error level 01, number 22 of PDF417
data.
Printer.FontSize = 9.5
Printer.FontName = "PDF417_CONTROL"
Printer.Print "_D03_S00_W3_H3_E01_N00022";

' Specify the encoded PDF417 data.
Printer.FontSize = 9.5
Printer.FontName = "PDF417_DATA"
Printer.Print "PDF417-Code Test Print";

'Print PDF417 data.
Printer.FontSize = 9.5
Printer.FontName = "PDF417_CONTROL"
Printer.Print "_P"

Printer.EndDoc
```

8. Graphic printing function

Graphic printing is supported by this driver.

The resolution is as follows.

	Resolution (DPI)
Thermal Printers	203 x 203

TrueType font is printed as graphic by this driver.

- If the long size graphic data is printed with the horizontal paper orientation, a gap about 1mm may be generated.
- Print data size of graphic printing is large. Therefore serial interface is not adequate for graphic printing because of its slow communication speed.

9. Special functions

To use special function of printer, it is necessary to send specified character in "Control" font. If other font is used, it does not work for the special functions.

Model	Printer Function	"Control"		"xx cpi"
		ASCII	Hex	Hex
All drawer models	50ms pulse to drawer #1	A	41	81
All drawer models	100ms pulse to drawer #1	B	42	82
All drawer models	150ms pulse to drawer #1	C	43	83
All drawer models	200ms pulse to drawer #1	D	44	84
All drawer models	250ms pulse to drawer #1	E	45	85
All drawer models	50ms pulse to drawer #2	a	61	89
All drawer models	100ms pulse to drawer #2	b	62	8A
All drawer models	150ms pulse to drawer #2	c	63	8B
All drawer models	200ms pulse to drawer #2	d	64	8C
All drawer models	250ms pulse to drawer #2	e	65	8D
All models	Horizontal Tab (HT)	5	35	95
All models	Line Feed (LF)	6	36	96
All models	Carriage Return (CR)	7	37	97
All cutter models	Receipt paper Full Cut *	F	46	9D
All cutter models	Receipt paper Partial Cut *	P	50	9E
All models	NV Bitmap data ID:1 Normal printing	G	47	
All models	NV Bitmap data ID:2 Normal printing	H	48	
All models	NV Bitmap data ID:3 Normal printing	I	49	
All models	NV Bitmap data ID:4 Normal printing	J	4A	
All models	NV Bitmap data ID:5 Normal printing	K	4B	
All models	NV Bitmap data ID:1 Double Width printing	Q	51	
All models	NV Bitmap data ID:2 Double Width printing	R	52	
All models	NV Bitmap data ID:3 Double Width printing	S	53	
All models	NV Bitmap data ID:4 Double Width printing	T	54	
All models	NV Bitmap data ID:5 Double Width printing	U	55	
All models	NV Bitmap data ID:1 Double Height printing	V	56	
All models	NV Bitmap data ID:2 Double Height printing	W	57	
All models	NV Bitmap data ID:3 Double Height printing	X	58	
All models	NV Bitmap data ID:4 Double Height printing	Y	59	
All models	NV Bitmap data ID:5 Double Height printing	Z	5A	
All models	NV Bitmap data ID:1 Quadruple printing	[5B	
All models	NV Bitmap data ID:2 Quadruple printing]	5D	
All models	NV Bitmap data ID:3 Quadruple printing	^	5E	
All models	NV Bitmap data ID:4 Quadruple printing	_	5F	
All models	NV Bitmap data ID:5 Quadruple printing	`	60	

* Depending on the memory switch setting of the printer, cutting method may not follow as specified.

* The function not supported by printer does not work.

10. Paper sizes

By installing driver, paper sizes (combination of supported paper width and various paper lengths) are automatically added. The details of length and width are as follows.

10.1 Conventional models

A) Length

	Paper length
a)	A4 length (297mm)
b)	B5 length (257mm)
c)	6 in Page (6 in)
d)	Letter length (11 in)
e)	Executive length (10.5 in)
f)	Receipt (3276 mm)
g)	User-Defined size

B) Width

Model	Paper width
CT-S251	58mm (32Col.) 58mm (36Col.)
CT-S280(II)/281(II)	58mm (32Col.) 58mm (30Col.)
CT-P290/291	58mm (36Col.)
CT-S300/310 PMU2xxx PPU-700	80mm (48Col.) 80mm (42Col.) 58mm (32Col.) 58mm (30Col.)
CT-P292/293	80mm (48Col.) 58mm (36Col.)
CBM1000II BD2-xxxx	80mm (48Col.) 80mm (42Col.) 58mm (36Col.) 58mm (30Col.)
CT-S601(II) CT-S651(II) CT-S801(III) CT-S851(III) CT-S2000	83mm (53Col.) 80mm (48Col.) 80mm (42Col.) 58/60mm (36Col.) 58mm (30Col.)

CT-S4000	112mm (69Col.) 83mm (53Col.) 80mm (48Col.) 80mm (42Col.)
CD-S500 series	76mm 69.5mm 58.5mm

* As mentioned in previous section, if the "Paper Type" is set for "Receipt" and print data is shorter than paper size, printing is finished before reaching the specified paper size with cutting paper or just stopping printing. If the "Paper Type" is set for "Ticket", the printer continues paper feeding until reaching the chosen paper size.

* It is not possible to choose f) Receipt (3276 mm) size from software like MS-Word or MS-ACCESS.

10.2 New standard of paper size

Target CT-D150/151/E351/651/S751

Print width	CT-D101	80 (72)	The number is “mm” in the meaning of Paper Width (Print Width)
	CT-D150	80(64)	
	CT-D151	58 (48)	
	CT-E301	58 (45)	
	CT-E351		
	CT-E601		
	CT-E651		
	CT-S751		
	CT-S801III		
	CT-S851III		
	CT-S4500	4in(104mm) 4in(90mm) 3in(82.5mm) 3in(72mm) 3in(68.25mm) 3in(64mm) 2in(54.5mm) 2in(54mm) 2in(52.5mm) 2in(48mm) 2in(45mm)	"In" means Paper Width in inch Number in parentheses is Print Width
Max. Paper length		3276mm (Windows max. paper length) 550mm (MS-Office max. paper length) 297mm (A4 length) 279mm (Letter length)	

Supplement

Conventional paper sizes were based on the paper width, assuming the presence of margins that printer cannot print.

The paper size of the new standard is based on the printing width and assumes that the left and right margins are 0.

Even when the user defines the paper size, it is necessary to set it based on the printing width.

For example, when setting the printing margins in MS-Word for conventional paper sizes, the printing margins can be automatically adjusted to the minimum margin values. But with the new standard paper sizes, if you set the left and right margins to 0, you can print the full print width.

10.3 User defined paper sizes

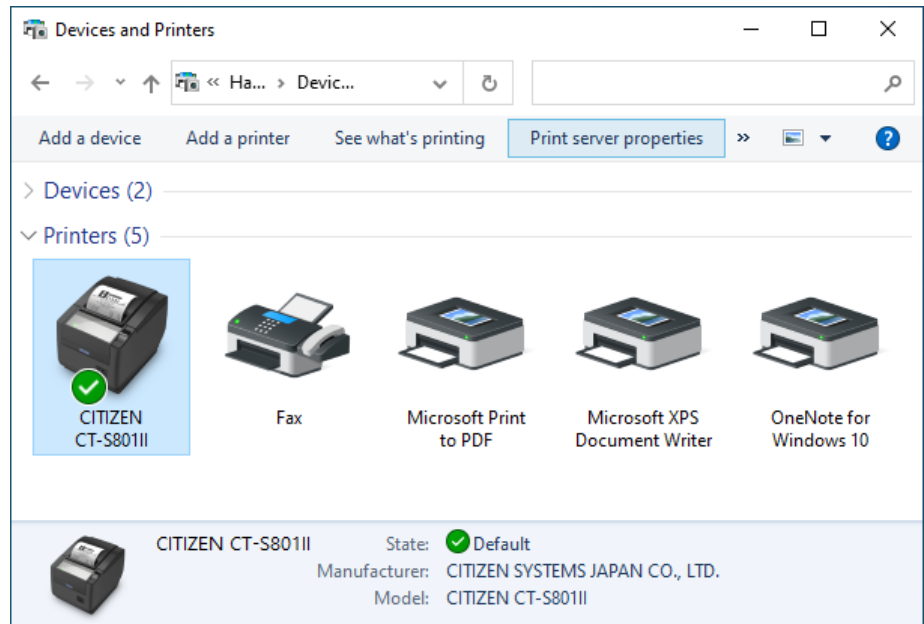
User defined paper can be set up by following way. The size that user can define depends on the printer driver.

Windows 7 or later

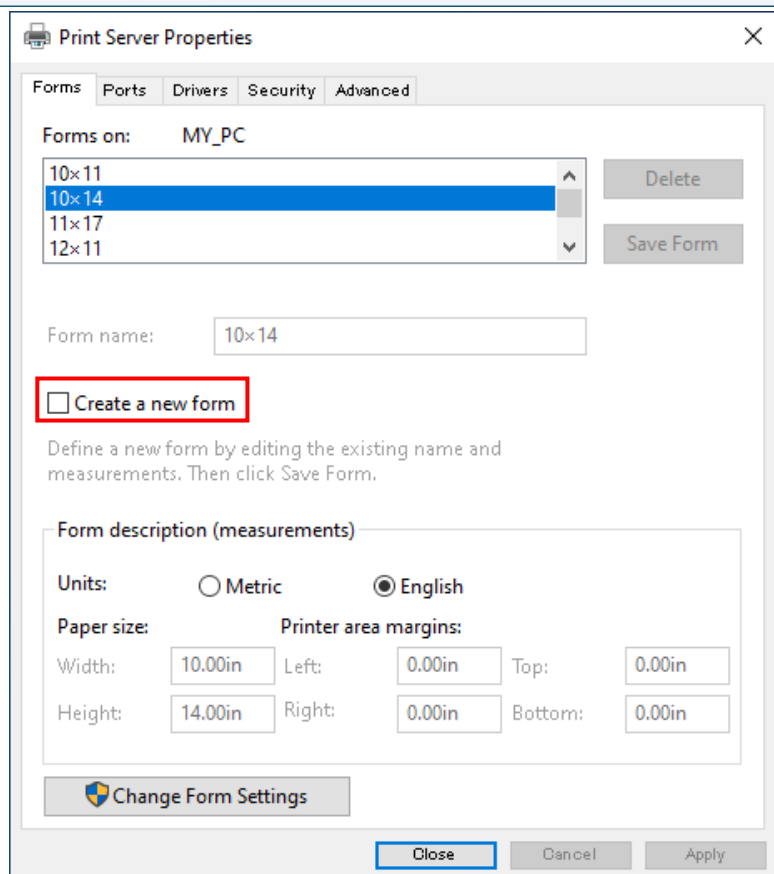
Open "Devices and Printers" and choose any printer. Then "Print server properties" button is shown on the top menu. Press the button.

Other OS

From menu of "Printer and Faxes" window,
File -> Server Properties



"Print Servers Properties" is shown like right picture. On "Forms" tab, put check mark in "Create a new form". Enter data in "Form name" and "Form description" and press "Save Form" to create a new form.



* The range of paper size that user can define is as follows.

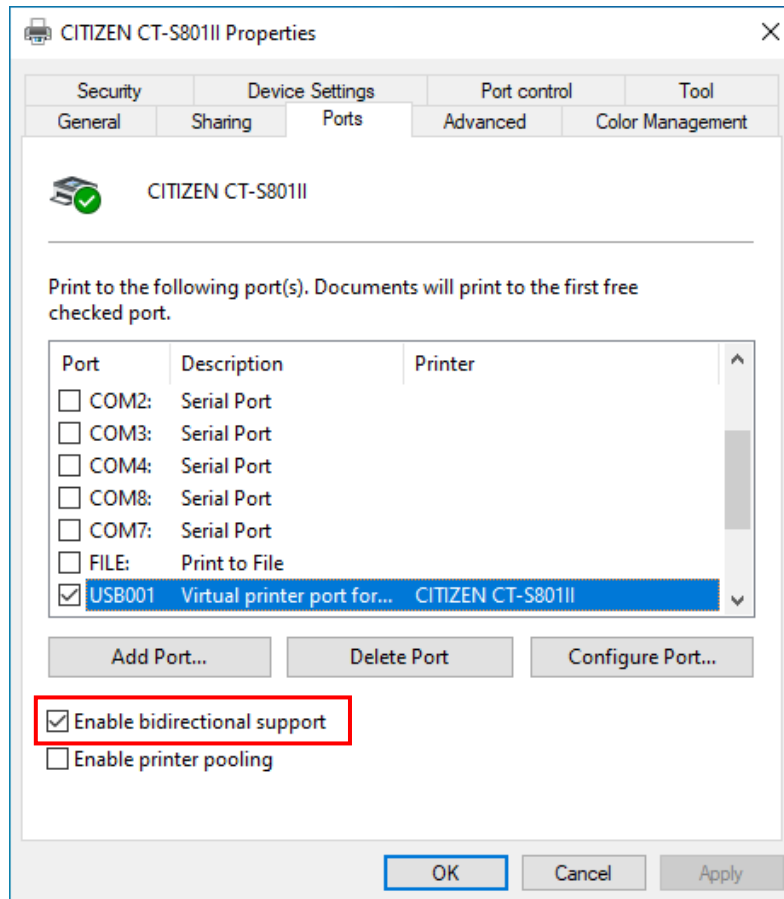
Driver name	User deign paper size range	
	Minimum	Minimum
CT-S280(II) CT-S281(II) BD2-428x	(20,20)	(464,26182):Max print width is 383
CT-S251	(203, 203)	(464,26182):Max print width is 431
CT-P290/291	(20, 20)	(480, 26182):Max print width is 407
CT-D150/151 CT-E351/651 CT-S751	(20, 20)	(576, 26182)
CBM1000II CT-S300 CT-S310 PMU2xxx BD2-222x	(20,20)	(640,26182):Max print width is 575
CT-S601(II) CT-S651(II) CT-S801(III) CT-S851(III) CT-S2000 CT-P292/293	(20,20)	(664,26182):Max print width is 640
CT-S4000	(20,20)	(896,26182):Max print width is 832
CT-S4500	(96, 20)	(832, 26182)
CT-S300 Black Mark CT-S310 Black Mark CBM1000II Label PMU23xxIII Presenter	(203, 203)	(640,26182):Max print width is 575
CT-S281(II) Label	(203, 203)	(464,26182):Max print width is 383
CT-S4000 Label	(203, 203)	(896,26182):Max print width is 832
CT-S651 Black Mark CT-S801 Label CT-S851 Black Mark CT-S2000 Label	(203, 203)	(664,26182):Max print width is 640
PPU-700	(203, 719)	(640,26182):Max print width is 575
CD-S50x	(144, 144)	(432, 18572)Max print width is 400

* Unit is dot. 1 dot is converted as 1/203 inch.

11. Printer Status

11.1 Getting Printer Status

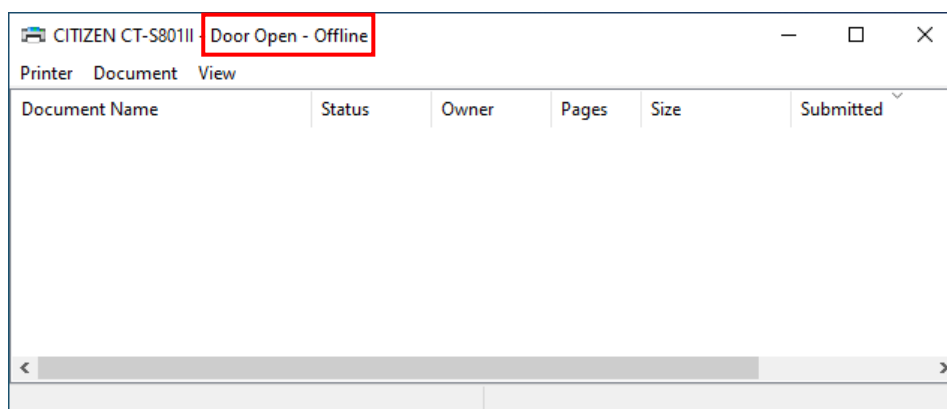
Uses own language monitor (Status monitor), bidirectional communication is enabled and it get possible to get the printer status through existing Windows driver. Please make sure that "Enable bidirectional support" is chosen.



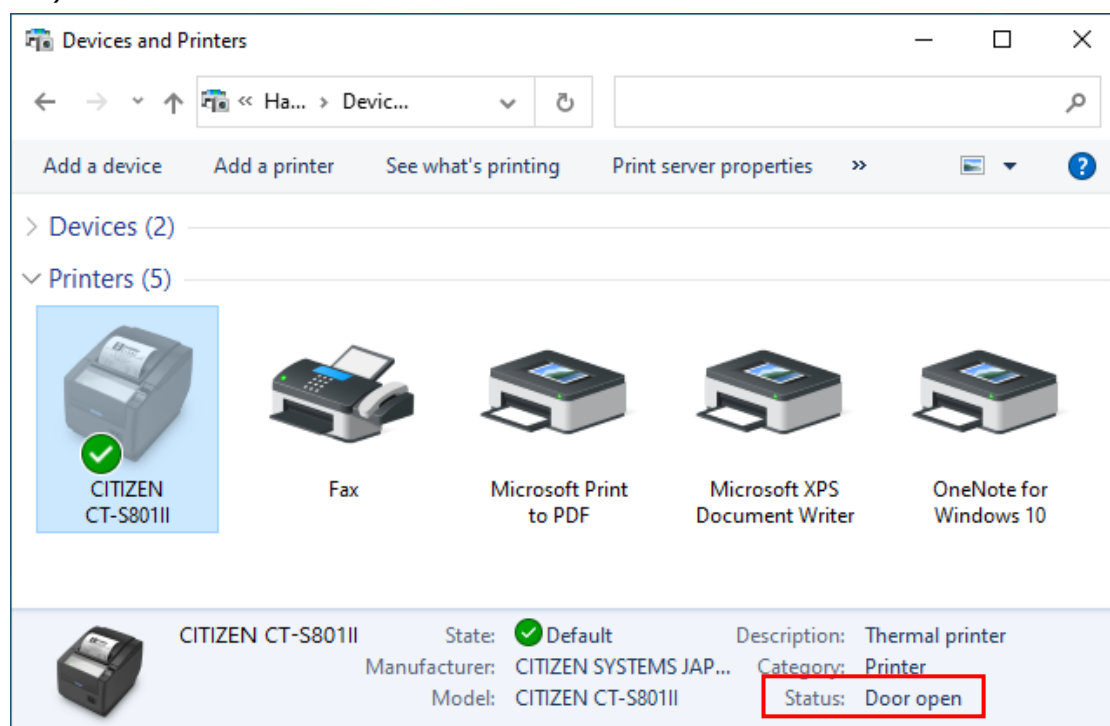
Set the printer memory switch 1-3 Busy condition ON (Full)

When printer status is changed, the message on the top of spooler window or status column of driver list is changed immediately.

(Spooler)



(Driver list)



Shown messages depend on the printer status as follows.

Status of printer	Message on spooler	Message on driver list
Cover open	Door Open	Door open
Paper end	Out of Paper	Paper out
Paper near end	Paper Problem	Paper problem
Paper Jam (CT-E601)	Paper Jam	Paper jam
Cutter error	User Intervention Required	User intervention
Head over-heat	User Intervention Required	User intervention
FEED key pressed	User Intervention Required	User intervention
Interface cable disconnected	Offline	Offline
Printer power off	Offline	Offline
Printer offline	Offline	Offline

When multiple statuses are detected simultaneously, combined message is shown.

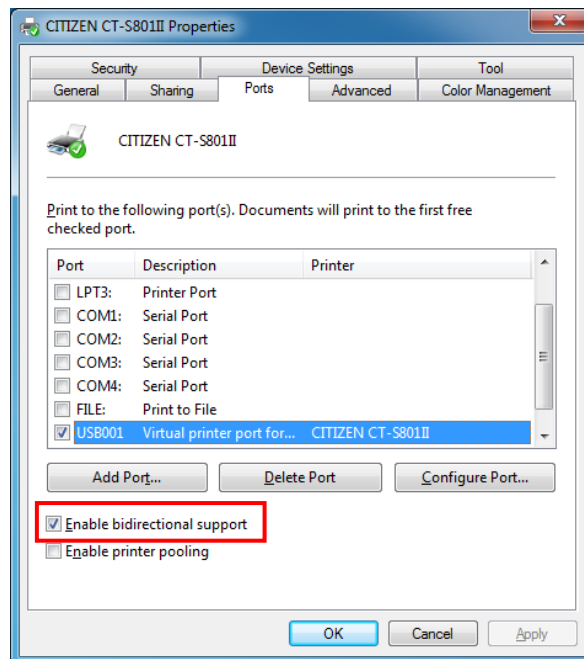
"Offline" is always shown together for "Cover open", "Paper end", "Cutter error", "Head overheat", "Feed key pressed" status.

Remarks: If SNMP is selected on SNMP Monitor Setting of TCP/IP Port, you can expect problems due to the conventional status acquisition method such as time-consuming printing and printing failure are solved. However, depending on the model of the printer, firmware version, interface board, etc., status acquisition by SNMP cannot be done or the type of printer status obtained may be reduced.

11.2 Enable/Disable Bi-directional Communication

Turn the printer on while printer and PC are connected.

If checkbox of "Enable bidirectional support" on property page of driver is ticked, bidirectional communication is enabled. If it is not ticked, bidirectional communication is disabled.

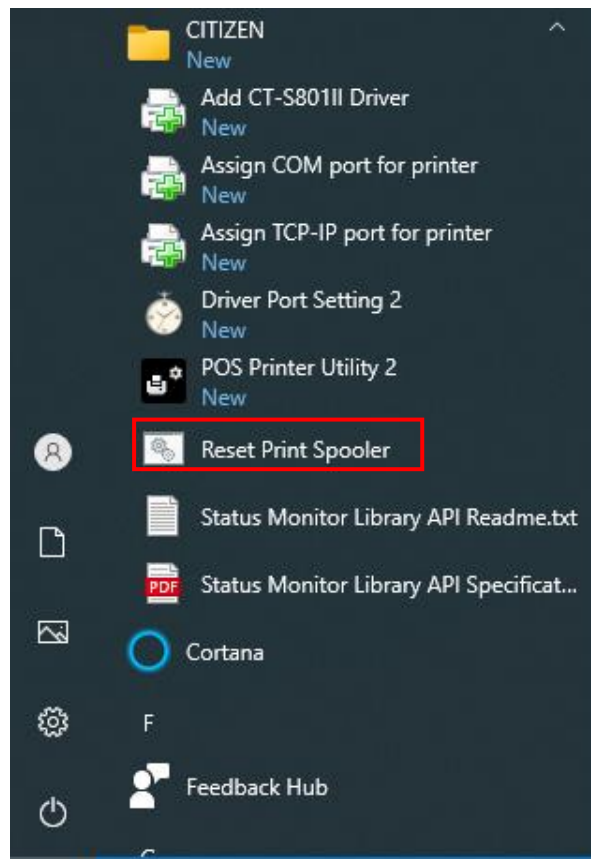


After changing this setting, it is necessary to restart (reset) printer spooler without fail.

To perform Printer Spooler Reset, you can follow as

(Older Windows) Start => (Program List) => CITIZEN => Driver Port => Reset Print Spooler

(Windows10) Start => CITIZEN => Reset Print Spooler



12. Example of Usage for specific software

12.1 Example of usage by Microsoft Word

Example to use printer font on MS-Word2003

A. From the menu, click

File--> Print --> Printer Name

Choose the printer to use then click Close button.

B. Then from menu

File --> Page setting --> Paper size

And choose the paper size to use.

C. Then move to **Margin** tab and Set the proper margins. (If you set the margins to zero, it will be corrected to minimum number automatically after the error message.)

D. Choose the printer font in the font list box (Refer to above printer font section)

E. Choose the printer font size in the font size list box. (Refer to above printer font section)

F. Enter the data to print on Word,

Step from here is important.

G. From menu

Tools --> Options --> Compatibility

Then choose "Microsoft Word 6.0/95" or "Use printer metrics to lay out document" in "Options"

H. Finally

File --> Print --> OK

Example to use special function to open drawer1

Step A to C is same as above.

D. Choose "Control" from font list box

E. Choose "12" in font size list box.

F. Enter "A" on Word screen. (Function to send 50ms pulse to drawer1 is assigned to "A".)

Follow step G and H mentioned above.

12.2 Example of program by Visual Basic

Following is the Visual Basic 6.0 program list for "CITIZEN CT-S2000" to utilize various printing and special functions.

```
' Set "CT-S2000" as default printer driver
Dim X As Printer
For Each X In Printers
    If X.DeviceName = "CITIZEN CT-S2000" Then
        Set Printer = X
        Exit For
    End If
Next

`Printing Windows font
Printer.FontSize=10
Printer.FontName="Arial"
Printer.Print "Font Arial / Size 10"

`Printing Printer font
Printer.FontSize=12
Printer.FontName="15 cpi"
Printer.Print "15 cpi / Size 12"

`Printing Barcode
Printer.FontSize=42
Printer.FontName="Code39"
Printer.Print "ABC123456"

`Opening cash drawer
Printer.FontSize=12
Printer.FontName="Control"
Printer.Print "A" `Drawer 1 at 50ms

`Cutting paper
Printer.FontSize=12
Printer.FontName="Control"
Printer.print "P" `Partial cut

`Printing graphic data from NV memory
Printer.FontSize=12
Printer.FontName="Control"
Printer.print "G" `Print #1 gaphic data in NV memory

Printer.EndDoc

Also you can send commands through driver but it is necessary to choose printer font first.
(Please use this way at your own risk. We do not recommend this usage.)
(ex)

Printer.FontSize=12
Printer.FontName="15 cpi"
Printer.Print CHR$(&H1B) + "V" + CHR$(1) `90 degrees right turned.
Printer.Print "15 cpi / Size 12"
Printer.EndDoc
```

12.3 Example of program by Visual C++

Following is the Visual C++ 6.0 program list using MFC library.

```
// Get the DEVMODE structure of printer to use
// lpdevmode is the pointer for got DEVMODE structure

// Generate device context of specified printer
HDC hdc;
hdc = CreateDC(_T("CITIZEN CT-S2000"), _T("CITIZEN CT-S2000"), NULL, lpdevmode);
if (!hdc) return;

// Attach the printer device context to CDC
CDC PrinterCDC;
PrinterCDC.Attach(hdc);

// Make Print-Job
DOCINFO docInfo;
memset(&docInfo, 0, sizeof(docInfo));
docInfo.cbSize = sizeof(docInfo);
docInfo.lpszDocName = _T("Driver Print Test");
docInfo.lpszOutput = NULL;
docInfo.lpszDatatype = NULL;
docInfo.fwType = NULL;

// Start printing
int ypos = 0;
PrinterCDC.StartDoc(&docInfo);
PrinterCDC.StartPage();

// Windows font
CFont setFont;
CFont* poldFont;
CSize setSize;
CString txtPrintData;
setFont.CreatePointFont(10*10, _T("Arial"), &PrinterCDC);
poldFont = PrinterCDC.SelectObject(&setFont);
txtPrintData = _T("Font Arial / Size 10");
setSize = PrinterCDC.GetTextExtent(txtPrintData);
PrinterCDC.TextOut(0, ypos, txtPrintData);
PrinterCDC.SelectObject(poldFont);
setFont.DeleteObject();
ypos += setSize.cy;

// Printer font
setFont.CreatePointFont(12*10, _T("15 cpi"), &PrinterCDC);
poldFont = PrinterCDC.SelectObject(&setFont);
txtPrintData = _T("15 cpi / Size 12");
setSize = PrinterCDC.GetTextExtent(txtPrintData);
PrinterCDC.TextOut(0, ypos, txtPrintData);
PrinterCDC.SelectObject(poldFont);
setFont.DeleteObject();
ypos += setSize.cy;

// Barcode
setFont.CreatePointFont(42*10, _T("Code39"), &PrinterCDC);
poldFont = PrinterCDC.SelectObject(&setFont);
txtPrintData = _T("ABC123456");
setSize = PrinterCDC.GetTextExtent(txtPrintData);
PrinterCDC.TextOut(0, ypos, txtPrintData);
```



```

PrinterCDC.SelectObject(poldFont);
setFont.DeleteObject();
ypos += setSize.cy;

// Cash drawer
setFont.CreatePointFont(12*10, _T("Control"), &PrinterCDC);
poldFont = PrinterCDC.SelectObject(&setFont);
txtPrintData = _T("A");
setSize = PrinterCDC.GetTextExtent(txtPrintData);
PrinterCDC.TextOut(0, ypos, txtPrintData);
PrinterCDC.SelectObject(poldFont);
setFont.DeleteObject();
ypos += setSize.cy;

// Cut paper
setFont.CreatePointFont(12*10, _T("Control"), &PrinterCDC);
poldFont = PrinterCDC.SelectObject(&setFont);
txtPrintData = _T("P");
setSize = PrinterCDC.GetTextExtent(txtPrintData);
PrinterCDC.TextOut(0, ypos, txtPrintData);
PrinterCDC.SelectObject(poldFont);
setFont.DeleteObject();
ypos += setSize.cy;

// Graphic data from NV memory
setFont.CreatePointFont(12*10, _T("Control"), &PrinterCDC);
poldFont = PrinterCDC.SelectObject(&setFont);
txtPrintData = _T("G");
setSize = PrinterCDC.GetTextExtent(txtPrintData);
PrinterCDC.TextOut(0, ypos, txtPrintData);
PrinterCDC.SelectObject(poldFont);
setFont.DeleteObject();
ypos += setSize.cy;

// End Printing
PrinterCDC.EndPage();
PrinterCDC.EndDoc();

// Release Printer Device Context
PrinterCDC.Detach();
DeleteDC(PrinterHDC);

```

12.4 Example of program by Visual Basic.Net

Following is the Visual Basic .Net program list using Win32API.

```
Imports System.Runtime.InteropServices

Public Class PrinterControl
    <StructLayout(LayoutKind.Sequential)> _
    Public Structure DOCINFO
        Public cbSize As Integer
        Public lpszDocName As String
        Public lpszOutput As String
        Public lpszDatatype As String
        Public fwType As Integer
    End Structure

    <DllImport("winspool.drv", CharSet:=CharSet.Ansi, ExactSpelling:=False,
CallingConvention:=CallingConvention.StdCall)> _
    Public Shared Function OpenPrinter(pPrinterName As [String], ByRef phPrinter As IntPtr,
pDefault As IntPtr) As Long
        End Function

    <DllImport("winspool.drv", CharSet:=CharSet.Ansi, ExactSpelling:=False,
CallingConvention:=CallingConvention.StdCall)> _
    Public Shared Function ClosePrinter(hPrinter As IntPtr) As Long
        End Function

    <DllImport("winspool.drv", CharSet:=CharSet.Ansi, ExactSpelling:=False,
CallingConvention:=CallingConvention.StdCall)> _
    Public Shared Function DocumentProperties(hwnd As IntPtr, hPrinter As IntPtr,
<MarshalAs(UnmanagedType.LPWStr)> pDeviceName As String, pDevModeOutput As IntPtr,
pDevModeInput As IntPtr, fMode As Integer) As Integer
        End Function

    Private Const DM_OUT_BUFFER As Integer = &H2
    Private Const DM_PROMPT As Integer = &H4
    Private Const DM_IN_PROMPT As Integer = DM_PROMPT
    Private Const DM_IN_BUFFER As Integer = &H8

    <DllImport("gdi32.dll", CharSet:=CharSet.Ansi, ExactSpelling:=False,
CallingConvention:=CallingConvention.StdCall)> _
    Public Shared Function CreateDC(lpszDriver As String, lpszDevice As String, lpszOutput As
String, lpInitData As IntPtr) As IntPtr
        End Function

    <DllImport("gdi32.dll", CharSet:=CharSet.Ansi, ExactSpelling:=False,
CallingConvention:=CallingConvention.StdCall)> _
    Public Shared Function DeleteDC(hdc As IntPtr) As Boolean
        End Function

    <DllImport("gdi32.dll", CharSet:=CharSet.Ansi, ExactSpelling:=False,
CallingConvention:=CallingConvention.StdCall)> _
    Public Shared Function StartDoc(hdc As IntPtr, <MarshalAs(UnmanagedType.Struct)> ByRef
lpdi As DOCINFO) As Int32
        End Function

    <DllImport("gdi32.dll", CharSet:=CharSet.Ansi, ExactSpelling:=False,
CallingConvention:=CallingConvention.StdCall)> _
    Public Shared Function EndDoc(hdc As IntPtr) As Int32
```

```

End Function

<DllImport("gdi32.dll", CharSet:=CharSet.Ansi, ExactSpelling:=False,
CallingConvention:=CallingConvention.StdCall)> _
Public Shared Function StartPage(hdc As IntPtr) As Int32
End Function

<DllImport("gdi32.dll", CharSet:=CharSet.Ansi, ExactSpelling:=False,
CallingConvention:=CallingConvention.StdCall)> _
Public Shared Function EndPage(hdc As IntPtr) As Int32
End Function

<StructLayout(LayoutKind.Sequential)> _
Public Class LOGFONT
    Public Const LF_FACESIZE As Integer = 32
    Public lfHeight As Integer
    Public lfWidth As Integer
    Public lfEscapement As Integer
    Public lfOrientation As Integer
    Public lfWeight As Integer
    Public lfItalic As Byte
    Public lfUnderline As Byte
    Public lfStrikeOut As Byte
    Public lfCharSet As Byte
    Public lfOutPrecision As Byte
    Public lfClipPrecision As Byte
    Public lfQuality As Byte
    Public lfPitchAndFamily As Byte
    <MarshalAs(UnmanagedType.ByValTStr, SizeConst:=LF_FACESIZE)> _
    Public lfFaceName As String
End Class

<DllImport("gdi32.dll", CharSet:=CharSet.Ansi, ExactSpelling:=False,
CallingConvention:=CallingConvention.StdCall)> _
Public Shared Function CreateFontIndirect(<[In]()>, MarshalAs(UnmanagedType.LPStruct)> lpIf
As LOGFONT) As IntPtr
End Function

<DllImport("gdi32.dll", CharSet:=CharSet.Ansi, ExactSpelling:=False,
CallingConvention:=CallingConvention.StdCall)> _
Public Shared Function SelectObject(hdc As IntPtr, handle As IntPtr) As IntPtr
End Function

<DllImport("gdi32.dll", CharSet:=CharSet.Ansi, ExactSpelling:=False,
CallingConvention:=CallingConvention.StdCall)> _
Public Shared Function DeleteObject(handle As IntPtr) As Boolean
End Function

<DllImport("gdi32.dll", CharSet:=CharSet.Ansi, ExactSpelling:=False,
CallingConvention:=CallingConvention.StdCall)> _
Public Shared Function TextOut(hdc As IntPtr, nXStart As Integer, nYStart As Integer, lpString As
String, cbString As Integer) As Integer
End Function

<DllImport("gdi32.dll", CharSet:=CharSet.Ansi, ExactSpelling:=False,
CallingConvention:=CallingConvention.StdCall)> _
Public Shared Function GetDeviceCaps(hdc As IntPtr, nIndex As Integer) As Integer
End Function

```

```
Private Const LOGPIXELSY As Integer = 90
```

```
Public Shared Sub PrinterFontTest(printerName As [String])
    Dim hPrinter As IntPtr = IntPtr.Zero
    OpenPrinter(printerName, hPrinter, IntPtr.Zero)

    ' Create Printer Device Context
    Dim hwnd As IntPtr = IntPtr.Zero
    Dim size As Integer = DocumentProperties(hwnd, hPrinter, printerName, IntPtr.Zero,
IntPtr.Zero, 0)
    Dim pDevmode As IntPtr = Marshal.AllocHGlobal(size)
    Dim ret As Integer = DocumentProperties(hwnd, hPrinter, printerName, pDevmode,
IntPtr.Zero, DM_OUT_BUFFER)
    Dim hDC As IntPtr = CreateDC(Nothing, printerName, Nothing, pDevmode)

    ' Make Print-Job
    Dim di As New DOCINFO()
    di.cbSize = Marshal.SizeOf(di)
    di.lpszDocName = "Driver Test Print"

    ' Start printing
    StartDoc(hDC, di)
    StartPage(hDC)

    Dim lf As New LOGFONT()
    Dim hFont As IntPtr = IntPtr.Zero
    Dim oldFont As IntPtr = IntPtr.Zero
    Dim str As String
    Dim fontsize As Integer, pointsize As Integer

    ' Windows font
    pointsize = 15
    fontsize = CInt((pointsize * 10) * GetDeviceCaps(hDC, LOGPIXELSY) / 720)
    lf.lfHeight = -fontsize
    lf.lfFaceName = "Arial"
    hFont = CreateFontIndirect(lf)
    oldFont = SelectObject(hDC, hFont)
    str = "Font Arial / Size 15"
    TextOut(hDC, 10, 10, str, str.Length)
    SelectObject(hDC, oldFont)
    DeleteObject(hFont)

    ' Printer font
    pointsize = 12
    fontsize = CInt((pointsize * 10) * GetDeviceCaps(hDC, LOGPIXELSY) / 720)
    lf.lfHeight = -fontsize
    lf.lfFaceName = "15 cpi"
    hFont = CreateFontIndirect(lf)
    oldFont = SelectObject(hDC, hFont)
    str = "15 cpi / Size 12"
    TextOut(hDC, 10, 50, str, str.Length)
    SelectObject(hDC, oldFont)
    DeleteObject(hFont)

    ' Barcode
    pointsize = 42
    fontsize = CInt((pointsize * 10) * GetDeviceCaps(hDC, LOGPIXELSY) / 720)
    lf.lfHeight = -fontsize
```

```

lf.lfFaceName = "Code39"
hFont = CreateFontIndirect(lf)
oldFont = SelectObject(hDC, hFont)
str = "ABC123456"
TextOut(hDC, 10, 90, str, str.Length)
SelectObject(hDC, oldFont)
DeleteObject(hFont)

' Cash drawer
pointsize = 12
fontsize = CInt((pointsize * 10) * GetDeviceCaps(hDC, LOGPIXELSY) \ 720)
lf.lfHeight = -fontsize
lf.lfFaceName = "Control"
hFont = CreateFontIndirect(lf)
oldFont = SelectObject(hDC, hFont)
str = "A"
TextOut(hDC, 10, 130, str, str.Length)
SelectObject(hDC, oldFont)
DeleteObject(hFont)

' Cut paper
pointsize = 12
fontsize = CInt((pointsize * 10) * GetDeviceCaps(hDC, LOGPIXELSY) \ 720)
lf.lfHeight = -fontsize
lf.lfFaceName = "Control"
hFont = CreateFontIndirect(lf)
oldFont = SelectObject(hDC, hFont)
str = "P"
TextOut(hDC, 10, 170, str, str.Length)
SelectObject(hDC, oldFont)
DeleteObject(hFont)

' Graphic data from NV memory
pointsize = 12
fontsize = CInt((pointsize * 10) * GetDeviceCaps(hDC, LOGPIXELSY) \ 720)
lf.lfHeight = -fontsize
lf.lfFaceName = "Control"
hFont = CreateFontIndirect(lf)
oldFont = SelectObject(hDC, hFont)
str = "G"
TextOut(hDC, 10, 210, str, str.Length)
SelectObject(hDC, oldFont)
DeleteObject(hFont)

' End Printing
EndPage(hDC)
EndDoc(hDC)

' Release Printer Device Context
DeleteDC(hDC)
Marshal.FreeHGlobal(pDevmode)
ClosePrinter(hPrinter)
End Sub
End Class

```

12.5 Example of program by Visual C#.Net

Following is the Visual Basic C#.Net program list using Win32API.

```
using System.Runtime.InteropServices;

public class PrinterControl
{
    [StructLayout(LayoutKind.Sequential)]
    public struct DOCINFO
    {
        public int cbSize;
        public string lpszDocName;
        public string lpszOutput;
        public string lpszDatatype;
        public int fwType;
    }

    [DllImport("winspool.drv", CharSet = CharSet.Ansi, ExactSpelling = false,
    CallingConvention = CallingConvention.StdCall)]
    public static extern long OpenPrinter(String pPrinterName, ref IntPtr phPrinter, IntPtr
    pDefault);

    [DllImport("winspool.drv", CharSet = CharSet.Ansi, ExactSpelling = false,
    CallingConvention = CallingConvention.StdCall)]
    public static extern long ClosePrinter(IntPtr hPrinter);

    [DllImport("winspool.drv", CharSet = CharSet.Ansi, ExactSpelling = false,
    CallingConvention = CallingConvention.StdCall)]
    public static extern int DocumentProperties(IntPtr hwnd, IntPtr hPrinter,
    [MarshalAs(UnmanagedType.LPWStr)] string pDeviceName, IntPtr pDevModeOutput, IntPtr
    pDevModeInput, int fMode);

    private const int DM_OUT_BUFFER = 0x2;
    private const int DM_PROMPT = 0x4;
    private const int DM_IN_PROMPT = DM_PROMPT;
    private const int DM_IN_BUFFER = 0x8;

    [DllImport("gdi32.dll", CharSet = CharSet.Ansi, ExactSpelling = false, CallingConvention =
    CallingConvention.StdCall)]
    public static extern IntPtr Createdc(string lpszDriver, string lpszDevice, string lpszOutput,
    IntPtr lpInitData);

    [DllImport("gdi32.dll", CharSet = CharSet.Ansi, ExactSpelling = false, CallingConvention =
    CallingConvention.StdCall)]
    public static extern bool DeleteDC(IntPtr hdc);

    [DllImport("gdi32.dll", CharSet = CharSet.Ansi, ExactSpelling = false, CallingConvention =
    CallingConvention.StdCall)]
    public static extern Int32 StartDoc(IntPtr hdc, [MarshalAs(UnmanagedType.Struct)] ref
    DOCINFO lpdi);

    [DllImport("gdi32.dll", CharSet = CharSet.Ansi, ExactSpelling = false, CallingConvention =
    CallingConvention.StdCall)]
    public static extern Int32 EndDoc(IntPtr hdc);

    [DllImport("gdi32.dll", CharSet = CharSet.Ansi, ExactSpelling = false, CallingConvention =
    CallingConvention.StdCall)]
    public static extern Int32 StartPage(IntPtr hdc);
```

```

[DllImport("gdi32.dll", CharSet = CharSet.Ansi, ExactSpelling = false, CallingConvention =
CallingConvention.StdCall)]
public static extern Int32 EndPage(IntPtr hdc);

[StructLayout(LayoutKind.Sequential)]
public class LOGFONT
{
    public const int LF_FACESIZE = 32;
    public int lfHeight;
    public int lfWidth;
    public int lfEscapement;
    public int lfOrientation;
    public int lfWeight;
    public byte lfItalic;
    public byte lfUnderline;
    public byte lfStrikeOut;
    public byte lfCharSet;
    public byte lfOutPrecision;
    public byte lfClipPrecision;
    public byte lfQuality;
    public byte lfPitchAndFamily;
    [MarshalAs(UnmanagedType.ByValTStr, SizeConst = LF_FACESIZE)]
    public string lfFaceName;
}

[DllImport("gdi32.dll", CharSet = CharSet.Ansi, ExactSpelling = false, CallingConvention =
CallingConvention.StdCall)]
public static extern IntPtr CreateFontIndirect([In, MarshalAs(UnmanagedType.LPStruct)]
LOGFONT lpf);

[DllImport("gdi32.dll", CharSet = CharSet.Ansi, ExactSpelling = false, CallingConvention =
CallingConvention.StdCall)]
public static extern IntPtr SelectObject(IntPtr hdc, IntPtr handle);

[DllImport("gdi32.dll", CharSet = CharSet.Ansi, ExactSpelling = false, CallingConvention =
CallingConvention.StdCall)]
public static extern bool DeleteObject(IntPtr handle);

[DllImport("gdi32.dll", CharSet = CharSet.Ansi, ExactSpelling = false, CallingConvention =
CallingConvention.StdCall)]
public static extern int TextOut(IntPtr hdc, int nXStart, int nYStart, string lpString, int
cbString);

[DllImport("gdi32.dll", CharSet = CharSet.Ansi, ExactSpelling = false, CallingConvention =
CallingConvention.StdCall)]
public static extern int GetDeviceCaps(IntPtr hdc, int nIndex);

private const int LOGPIXELSY = 90;

public static void PrinterFontTest(String printerName)
{
    IntPtr hPrinter = IntPtr.Zero;
    OpenPrinter(printerName, ref hPrinter, IntPtr.Zero);

    // Create Printer Device Context
    IntPtr hwnd = IntPtr.Zero;
    int size = DocumentProperties(hwnd, hPrinter, printerName, IntPtr.Zero, IntPtr.Zero,

```

```

0);
    IntPtr pDevmode = Marshal.AllocHGlobal(size);
    int ret = DocumentProperties(hwnd, hPrinter, printerName, pDevmode, IntPtr.Zero,
DM_OUT_BUFFER);
    IntPtr hDC = CreateDC(null, printerName, null, pDevmode);

    // Make Print-Job
    DOCINFO di = new DOCINFO();
    di.cbSize = Marshal.SizeOf(di);
    di.lpszDocName = "Driver Test Print";

    // Start printing
    StartDoc(hDC, ref di);
    StartPage(hDC);

    LOGFONT lf = new LOGFONT();
    IntPtr hFont = IntPtr.Zero;
    IntPtr oldFont = IntPtr.Zero;
    string str;
    int fontsize, pointsize;

    // Windows font
    pointsize = 15;
    fontsize = (int)((pointsize * 10) * GetDeviceCaps(hDC, LOGPIXELSY) / 720);
    lf.lfHeight = -fontsize;
    lf.lfFaceName = "Arial";
    hFont = CreateFontIndirect(lf);
    oldFont = SelectObject(hDC, hFont);
    str = "Font Arial / Size 15";
    TextOut(hDC, 10, 10, str, str.Length);
    SelectObject(hDC, oldFont);
    DeleteObject(hFont);

    // Printer font
    pointsize = 12;
    fontsize = (int)((pointsize * 10) * GetDeviceCaps(hDC, LOGPIXELSY) / 720);
    lf.lfHeight = -fontsize;
    lf.lfFaceName = "15 cpi";
    hFont = CreateFontIndirect(lf);
    oldFont = SelectObject(hDC, hFont);
    str = "15 cpi / Size 12";
    TextOut(hDC, 10, 50, str, str.Length);
    SelectObject(hDC, oldFont);
    DeleteObject(hFont);

    // Barcode
    pointsize = 42;
    fontsize = (int)((pointsize * 10) * GetDeviceCaps(hDC, LOGPIXELSY) / 720);
    lf.lfHeight = -fontsize;
    lf.lfFaceName = "Code39";
    hFont = CreateFontIndirect(lf);
    oldFont = SelectObject(hDC, hFont);
    str = "ABC123456";
    TextOut(hDC, 10, 90, str, str.Length);
    SelectObject(hDC, oldFont);
    DeleteObject(hFont);

    // Cash drawer
    pointsize = 12;

```



```

        fontsize = (int)((pointsize * 10) * GetDeviceCaps(hDC, LOGPIXELSY) / 720);
        lf.lfHeight = -fontsize;
        lf.lfFaceName = "Control";
        hFont = CreateFontIndirect(lf);
        oldFont = SelectObject(hDC, hFont);
        str = "A";
        TextOut(hDC, 10, 130, str, str.Length);
        SelectObject(hDC, oldFont);
        DeleteObject(hFont);

        // Cut paper
        pointsize = 12;
        fontsize = (int)((pointsize * 10) * GetDeviceCaps(hDC, LOGPIXELSY) / 720);
        lf.lfHeight = -fontsize;
        lf.lfFaceName = "Control";
        hFont = CreateFontIndirect(lf);
        oldFont = SelectObject(hDC, hFont);
        str = "P";
        TextOut(hDC, 10, 170, str, str.Length);
        SelectObject(hDC, oldFont);
        DeleteObject(hFont);

        // Graphic data from NV memory
        pointsize = 12;
        fontsize = (int)((pointsize * 10) * GetDeviceCaps(hDC, LOGPIXELSY) / 720);
        lf.lfHeight = -fontsize;
        lf.lfFaceName = "Control";
        hFont = CreateFontIndirect(lf);
        oldFont = SelectObject(hDC, hFont);
        str = "G";
        TextOut(hDC, 10, 210, str, str.Length);
        SelectObject(hDC, oldFont);
        DeleteObject(hFont);

        // End Printing
        EndPage(hDC);
        EndDoc(hDC);

        // Release Printer Device Context
        DeleteDC(hDC);
        Marshal.FreeHGlobal(pDevmode);
        ClosePrinter(hPrinter);
    }
}

```