

CITIZEN

Label Printer Utility2

User's Manual

Version 1.0.2.0

CITIZEN SYSTEMS JAPAN CO., LTD.

Copyrights

CITIZEN is a registered trademark of Citizen Watch Co., Ltd.

Windows® is a registered trade mark of Microsoft Corporation.

All other trademarks are the property of their respective owners.

Specifications subject to change without notice.

Copyright © 2024, CITIZEN SYSTEMS JAPAN CO., LTD. All rights reserved.

Revision History

| Date | Note |
|----------|-----------------------------------------------------|
| Apr 2023 | First publication |
| Jul 2023 | 'Receiving behavior on [Information] tab' is added. |
| Aug 2024 | Periodic update |
| | |
| | |
| | |
| | |
| | |
| | |
| | |
| | |
| | |
| | |
| | |
| | |
| | |
| | |
| | |
| | |
| | |
| | |
| | |

CONTENTS

| | |
|-----------------------------------------------------------------|-----------|
| 1. Getting Started | 5 |
| Utility Features Overview | 5 |
| System Requirements and Languages | 6 |
| Installing the Utility | 7 |
| Quick Start..... | 7 |
| 2. Interface | 8 |
| Printer Driver | 8 |
| Serial (COM/VCOM) | 9 |
| Parallel (LPT)..... | 9 |
| USB | 9 |
| LAN | 9 |
| 3. Sending Configuration | 10 |
| Send Configuration feature..... | 10 |
| [Standard] tab..... | 10 |
| [Easy] tab | 11 |
| 4. Receiving Configuration and printer information | 12 |
| Receiving Configuration | 12 |
| Receiving behavior on [Information] tab | 13 |
| 5. Exporting and Importing settings | 14 |
| Export..... | 14 |
| Import | 15 |
| Configuration File | 16 |
| 6. Media sensor adjustment..... | 17 |
| Sensor adjustment feature | 17 |
| Exporting a configuration file..... | 17 |
| 7. Print Test | 18 |
| Print test feature | 18 |
| 8. Restoring Default Settings & Exiting..... | 19 |
| [Restore Defaults] Button..... | 19 |
| Exiting | 19 |

1. Getting Started

Utility Features Overview

This utility is to configure the Citizen CL-S/CL-E/CL-H* printer series on Windows computer. Main features are: "Send Configuration" is to send new settings to a printer, "Receive" is to inquire the current settings from the printer, "Sensor Adjustment" is to adjust the media sensor of the printer, "Export..." is to save settings into a local file, "Import..." is to read settings from a local file.

The exporting/importing features allow you to keep certain settings in a local file and utilize them anytime.

*Version 1.0.1.1 supports CL-S70xIII series only.

LabelPrinterUtility2 1.0.1.0

Printer Model: CL-S700III English

Easy Standard Information Sensor Adjustment Print Test ☐ TAB Check All/Uncheck All

Global Config
 Config Set ☐ CONFIG SET 1

Page Setup
 Print Speed ☐ 7 IPS Auto Side Shift ☐ DOTS
 Print Darkness ☐ 12 Horizontal Shift ☐ 0.00 INCH
 Darkness Adjust ☐ 0 Vertical Image Shift ☐ 0.00 INCH
 Print Preference ☐ Darkness Vertical Image Shift ☐ DOTS
 Print Method ☐ TT Small Media Adjustment ☐ OFF
 Ribbon Winding Direction ☐ OUTSIDE Small Media Length ☐ 1.00 INCH
 Continuous Media Length ☐ 4.00 INCH Top Form Sensing ☐ ON
 Vertical Position ☐ 0.00 INCH Double Heat ☐ OFF

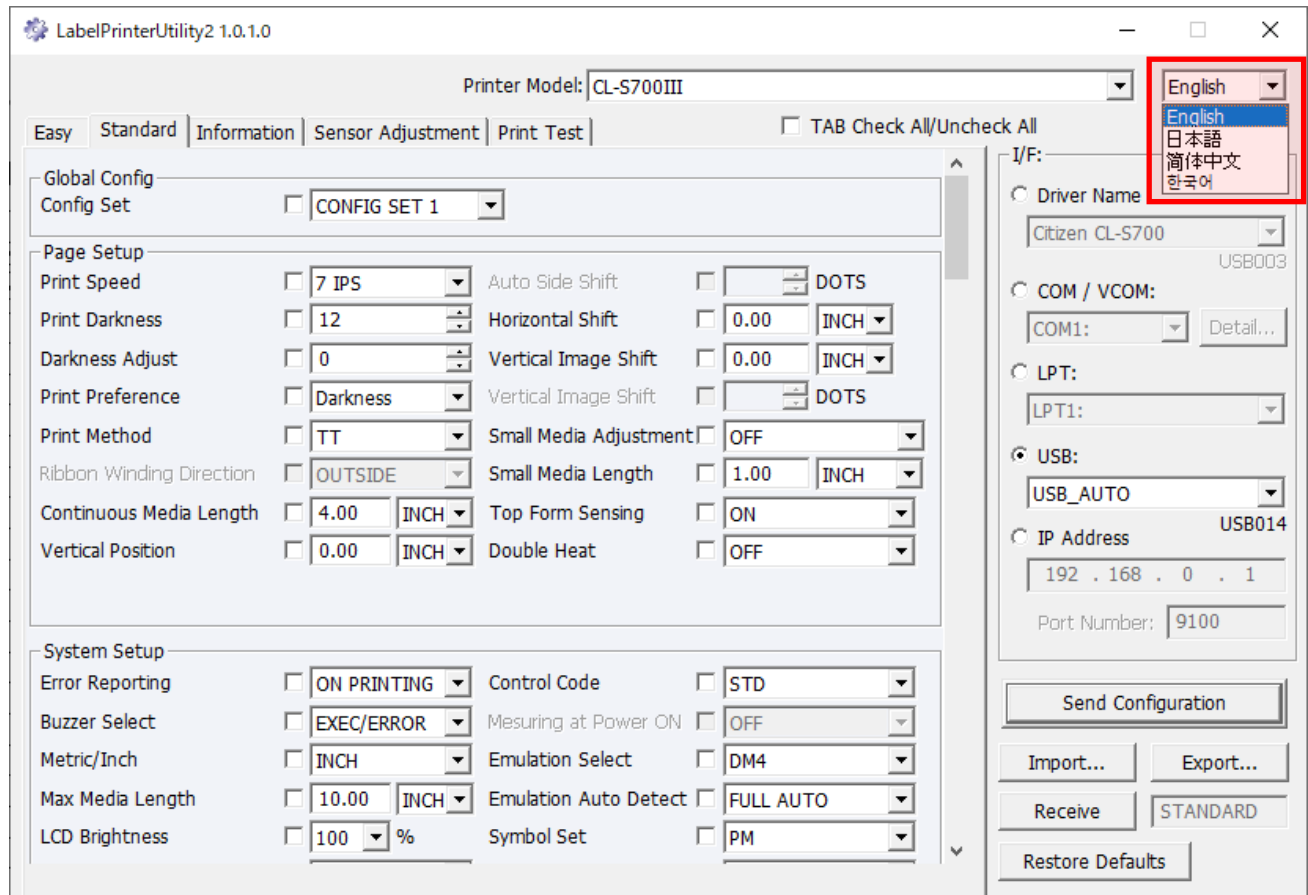
System Setup
 Error Reporting ☐ ON PRINTING Control Code ☐ STD
 Buzzer Select ☐ EXEC/ERROR Mesuring at Power ON ☐ OFF
 Metric/Inch ☐ INCH Emulation Select ☐ DM4
 Max Media Length ☐ 10.00 INCH Emulation Auto Detect ☐ FULL AUTO
 LCD Brightness ☐ 100 % Symbol Set ☐ PM

I/F:
☐ Driver Name
 Citizen CL-S700 USB003
☐ COM / VCOM:
 COM1: Detail...
☐ LPT:
 LPT1:
☒ USB:
 USB_AUTO USB014
☐ IP Address
 192 . 168 . 0 . 1
 Port Number: 9100

Send Configuration
 Import... Export...
 Receive STANDARD
 Restore Defaults

System Requirements and Languages

Windows 7 Professional SP1 or greater operating systems are required. This utility checks the current operation language of your computer and starts up either with Japanese, Simplified Chinese, Korean or English. You can also change the language manually.



This utility was tested with,

- Windows 11 x64
- Windows 10 x64
- Windows 8.1 x64
- Windows 8 x86
- Windows 7 Professional SP1 x64 English

Installing the Utility



This utility is provided as exe file format('BarcodePrinterUtility2.exe'). Simply place the exe file into your computer and run it. This utility generates two files when exiting: "LabelPrinterUtility.ini" which keeps the selected printer model name and interface, "Recent.dat" which keeps all setting values.

If the files exist when starting up, the saved values will be reflected to the utility's user interface. If the files don't exist, default values will be used. This means that the utility always starts up with default values when it is started up on a non-writable media.

Quick Start

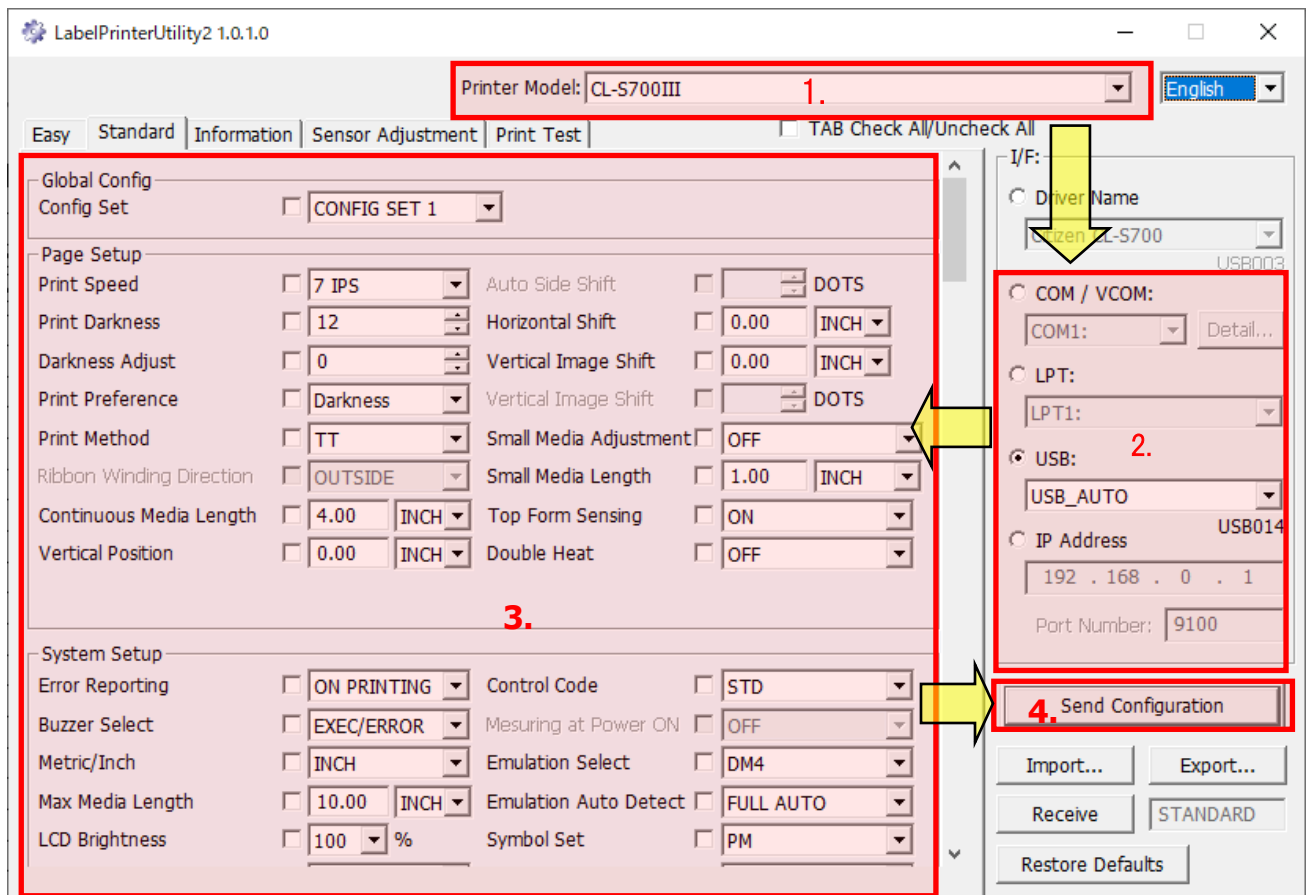
Run the "LabelPrinterUtility2.exe", then,

1. Select a printer model to configure.
2. Select an interface which you are using with the printer.
3. Select setting items you wish to configure.

Note that the utility only configures the items with "checked" checkbox.

4. Click [Send Configuration].

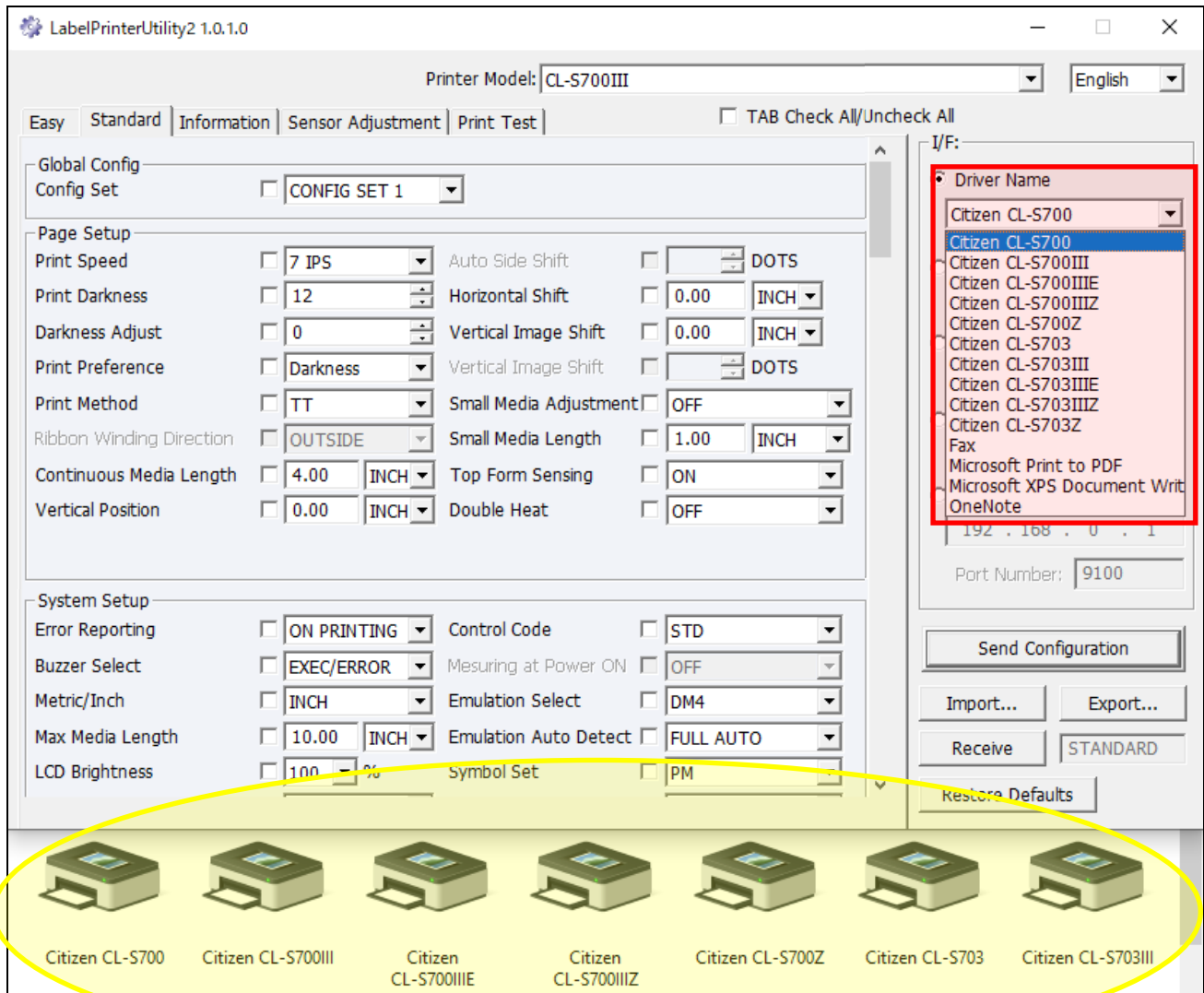
In most cases, the printer beeps and automatically restarts when the configuration is successfully set.



2. Interface

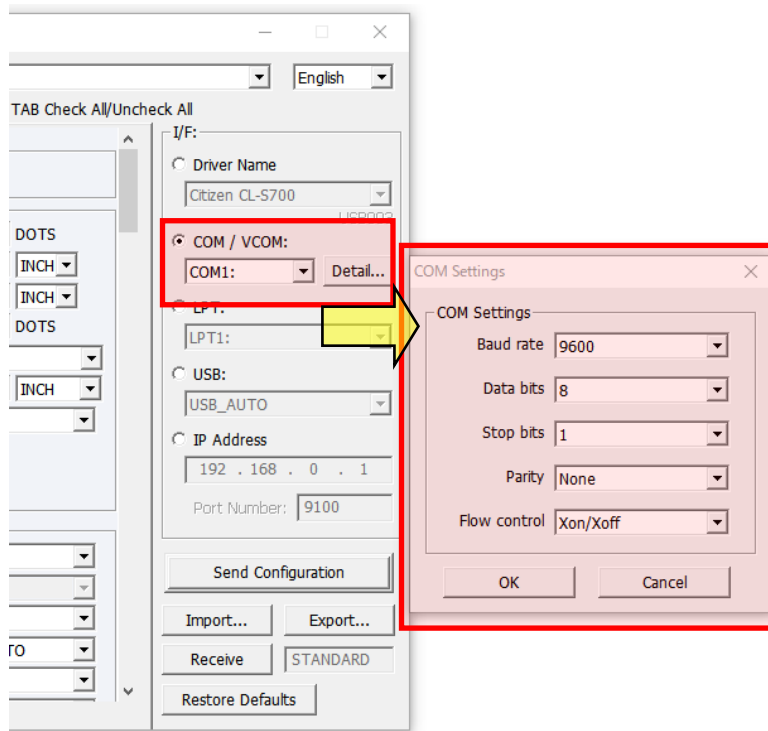
Printer Driver

If you select [Driver Name] as interface, the utility uses the printer port of the printer's Windows driver. The drop-down list shows the printer drivers you have in your Windows computer.



Serial (COM/VCOM)

When you use Serial interface, select a correct COM port number, and press [Detail...] to set up a correct COM port setting. The current COM port setting should be shown in the printer's self-test print. Please refer to the printer's user's manual for details. If you are using the VCOM (Virtual COM) driver, the COM port number for the VCOM (e.g. COM8) should be shown in the drop-down list.



Parallel (LPT)

When you use Parallel interface, select a correct LPT port.

USB

In most cases, a printer driver is installed with the use of USB connection. This selection also gives you an option to select a specific USB port. If USB_AUTO is selected, the utility automatically detects a USB printer which is connected to the Windows computer.

*When USB_AUTO is selected, please don't connect multiple USB printers to the Windows computer.

LAN

When you use LAN connection, please enter a correct 'IP address' and 'Port Number'. Citizen Barcode printers mostly use the port 9100.

3. Sending Configuration

Send Configuration feature

The configuration item area shows the setting items which you can configure with the selected printer model. Select an interface, tick items you wish to configure, select or adjust values and send values by pressing the Send Configuration button. 'TAB Check/Uncheck All' button helps you to check all items on the active tab or uncheck all items including non-active tabs collectively.

LabelPrinterUtility2 1.0.1.0

Printer Model: CL-S700III English

Easy Standard Information Sensor Adjustment Print Test ☐ TAB Check All/Uncheck All

Configuration item area

Global Config
 Config Set ☐ CONFIG SET 1

Page Setup
 Print Speed ☐ 7 IPS Auto Side Shift ☐ DOTS
 Print Darkness ☒ 12 Horizontal Shift ☐ 0.00 INCH
 Darkness Adjust ☐ 0 Vertical Image Shift ☐ 0.00 INCH
 Print Preference ☐ Darkness Vertical Image Shift ☐ DOTS
 Print Method ☒ TT Small Media Adjustment ☐ OFF
 Ribbon Winding Direction ☐ OUTSIDE Small Media Length ☐ 1.00 INCH
 Continuous Media Length ☐ 4.00 INCH Top Form Sensing ☐ ON
 Vertical Position ☐ 0.00 INCH Double Heat ☐ OFF

System Setup
 Error Reporting ☒ ON PRINTING Control Code ☐ STD
 Buzzer Select ☐ EXEC/ERROR Measuring at Power ON ☐ OFF
 Metric/Inch ☐ INCH Emulation Select ☐ DM4
 Max Media Length ☐ 10.00 INCH Emulation Auto Detect ☐ FULL AUTO
 LCD Brightness ☐ 100 % Symbol Set ☐ PM

I/F:
 Driver Name: Citizen CL-S700 USB003
 COM / VCOM: COM1: Detail...
 LPT: LPT1:
 USB: USB_AUTO
 IP Address: 192 . 168 . 0 . 1
 Port Number: 9100

Send Configuration
 Import... Export...
 Receive STANDARD
 Restore Defaults

Selectable items, settable values and initial values could be different depending on your region and printer model. Please refer to the user's manual or consult with your vendor.

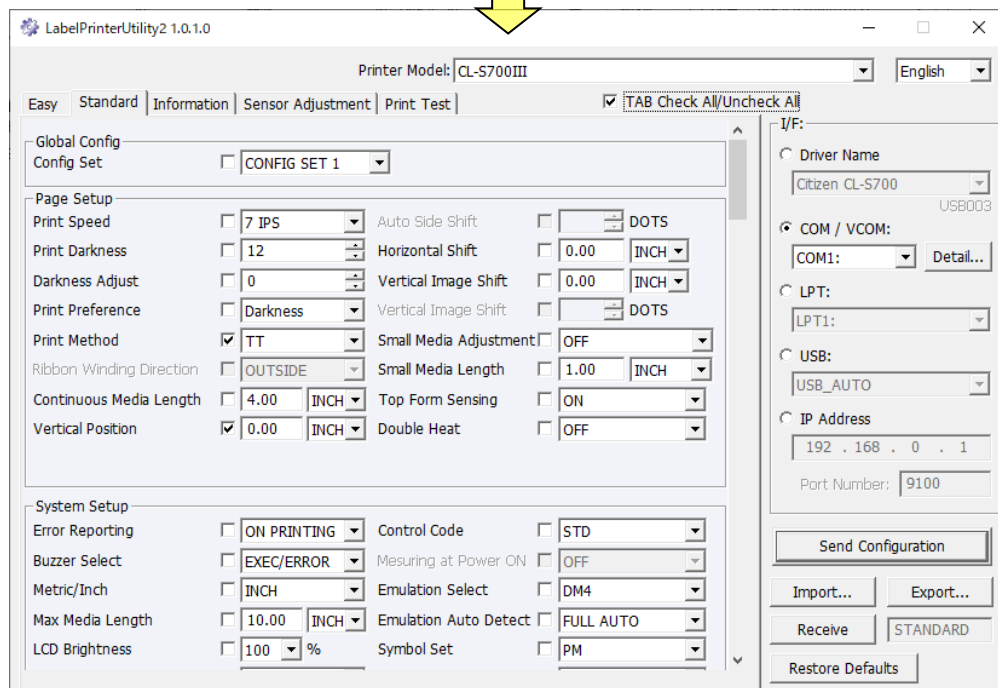
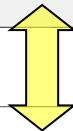
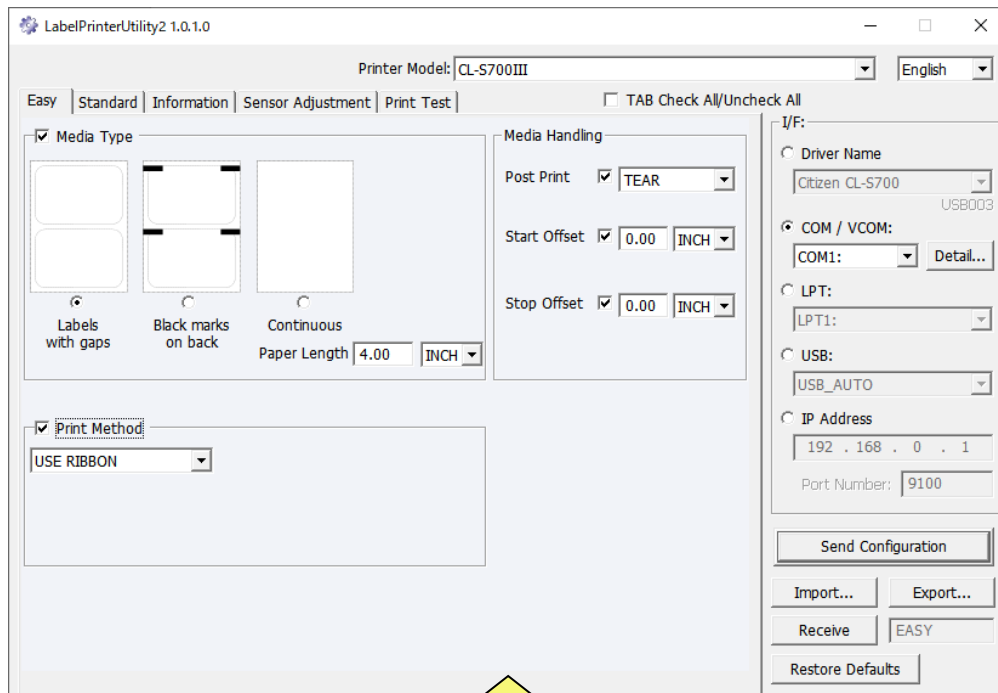
[Standard] tab

This tab is for editing all of setting items. Although bottom part of the tab is invisible in the initial state, they could become visible by controlling the scroll bar on the right.

[Easy] tab

This tab shows frequently used setting items only.

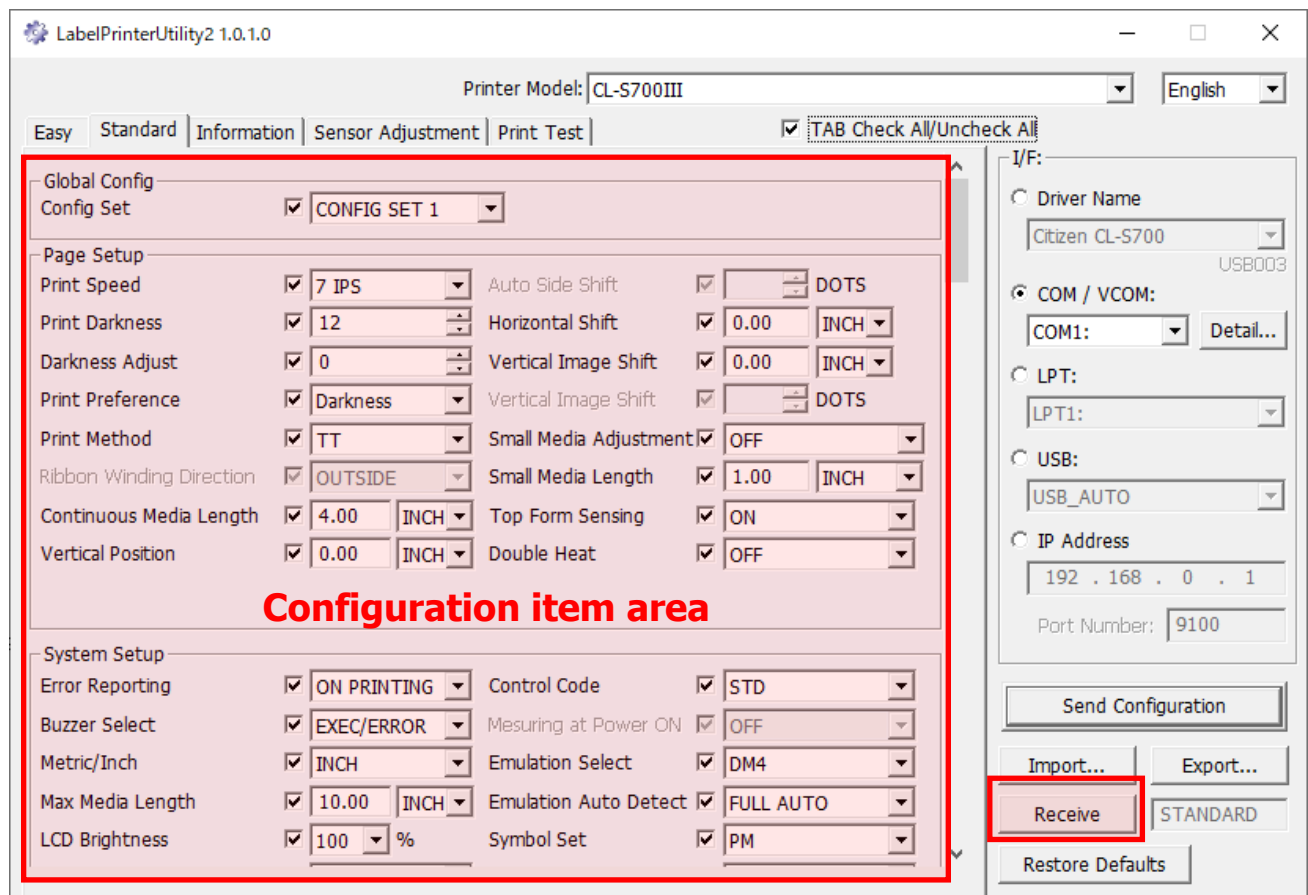
Using the Easy tab is a nice way to set up the printer quickly. Each item is tied to equivalent items in the Standard tab. Your setting in Easy tab is reflected to Standard tab, and vice versa.



4. Receiving Configuration and printer information

Receiving Configuration

The Receive button is to inquire the current settings or other information from the printer. Items which are corresponding to active tab are inquired. When current settings are inquired from a printer, checkboxes of inquired setting items are checked.



Receiving behavior on [Information] tab

If "Receive" is executed on Information tab, Printer Information and Printer Status are displayed on the tab. Printer Information consists of Serial Number, Print Counter, Service Counter and Cut Counter. Printer Status indicates printer's current condition such as error information and so on.

When current Printer Model is Datamax or ZPL compatible, "DMX/ZPL Printer status" is enabled. And When current Printer Model is EPL compatible, "EPL Printer status" is enabled. If "Receive Printer Status only" checkbox is checked, only Printer Status is received when "Receive" is executed.

< When a Datamax or ZPL compatible Printer model is selected >

The screenshot shows the LabelPrinterUtility2 1.0.1.0 window. The 'Printer Model' dropdown is set to 'CL-S700III'. The 'Information' tab is selected. The 'Printer Information' section displays: Serial Number (blurred), Print Counter: 0000.2Km, Service Counter: 0000.0Km, and Cut Counter: 79. The 'DMX/ZPL Printer Status' section shows: Paper Error: Yes, Ribbon Error: No, Printing: No, Pause: No, and Waiting for peeling: No. The 'Receive Printer Status only' checkbox is unchecked. The 'EPL Printer Status' section is empty. The right sidebar shows the 'I/F:' section with 'USB' selected, 'USB_AUTO' chosen, and 'Port Number' set to 9100. At the bottom, there are buttons for 'Send Configuration', 'Import...', 'Export...', 'Receive', 'INFORMATION', and 'Restore Defaults'.

< When a EPL compatible Printer model is selected >

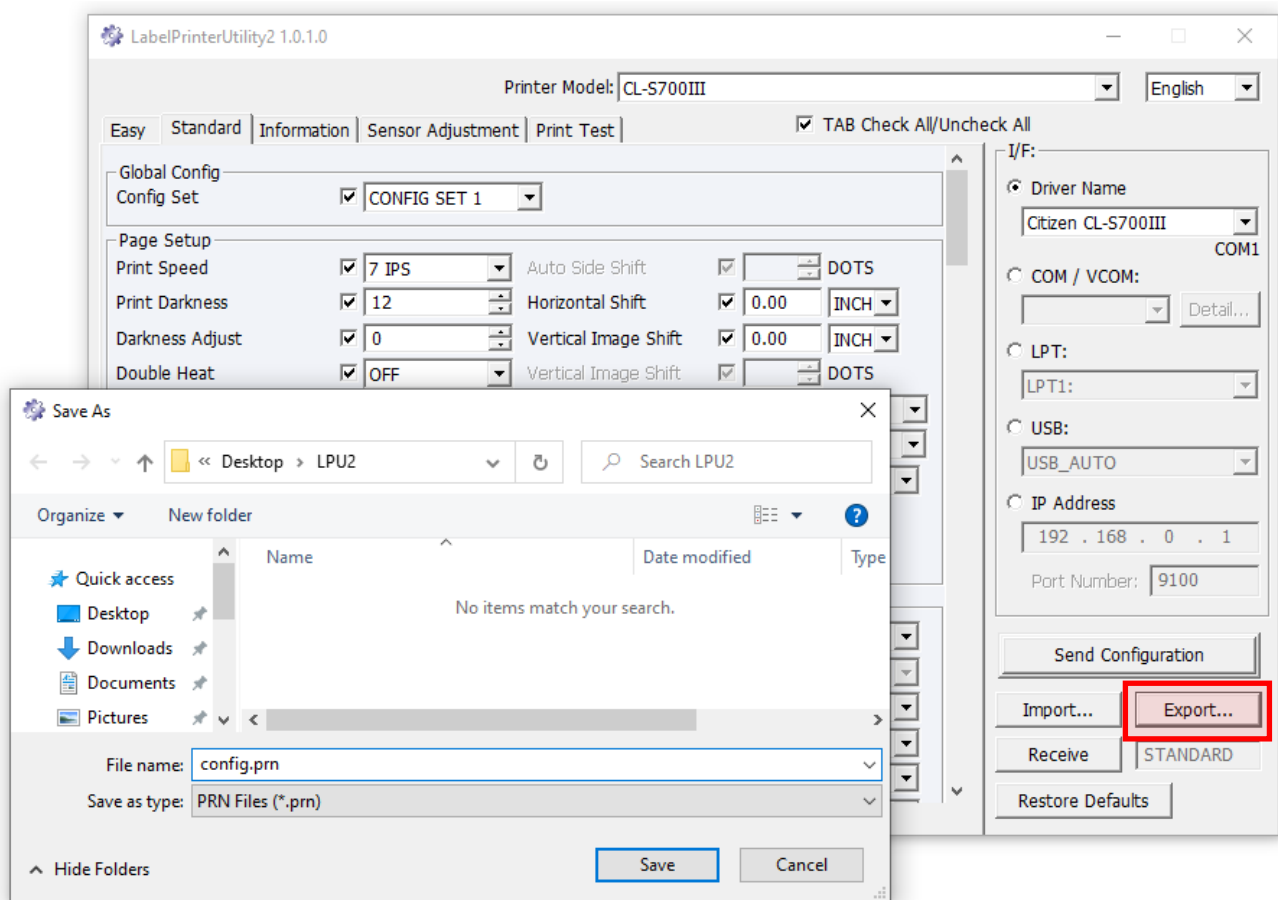
This screenshot is a cropped view of the 'EPL Printer Status' section from the previous image. It shows the 'Error code' as '11 Head up'. The 'Receive' and 'INFORMATION' buttons are highlighted with dashed borders.

5. Exporting and Importing settings

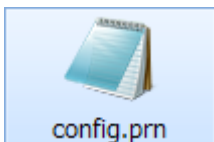
Export and Import features allow you to keep certain settings and utilize them later. This also helps you to set up multiple printers with the same settings easily.

Export

Tick items you wish to save and click Export, enter a file name and save a file. By checking 'TAB Check/Uncheck All Items', you can select all items on active tab collectively.

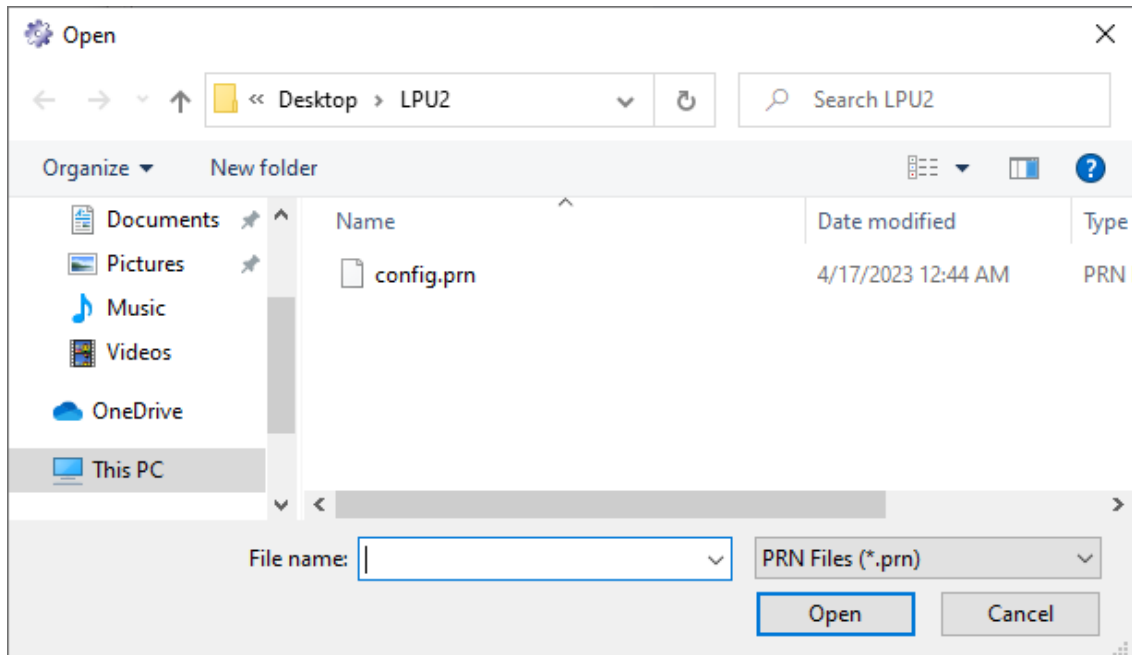


The configuration file will be saved as '.prn' file.



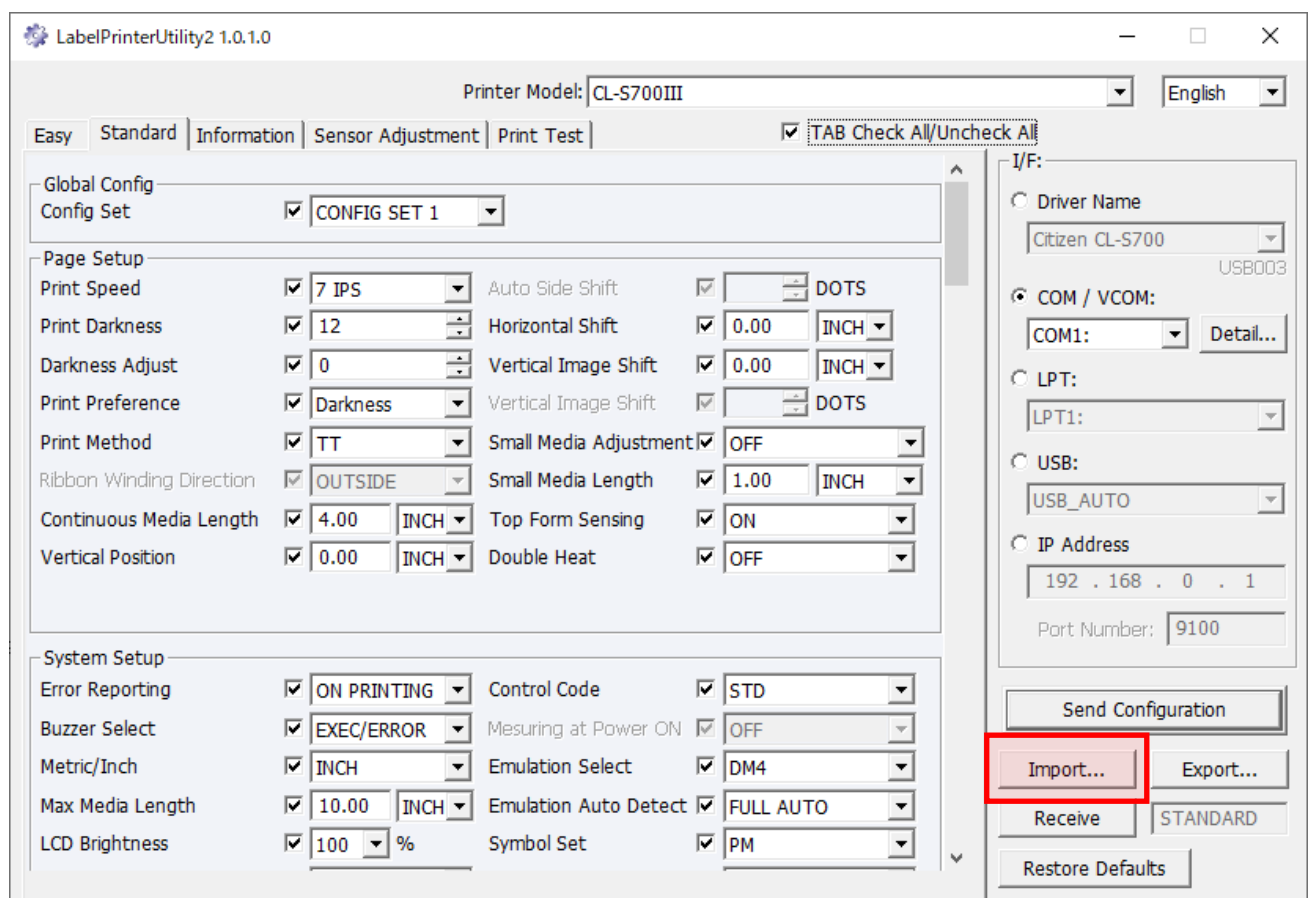
Import

Press Import, and then select a configuration file stored in your local computer.



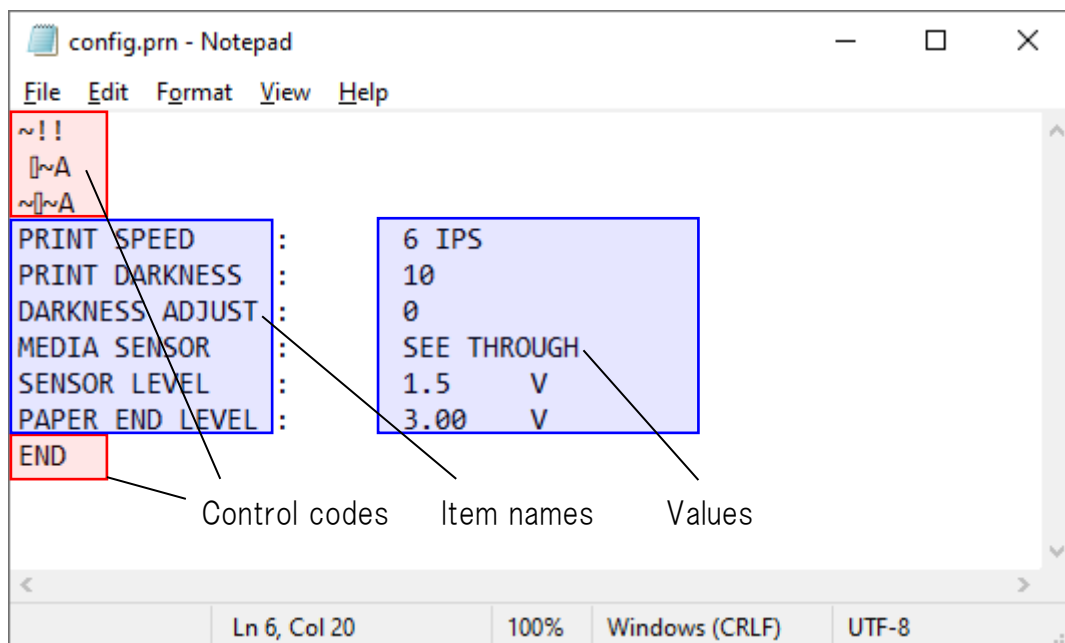
The settings in the configuration file will be imported to the configuration item area.

*If the file includes invalid setting values, applicable setting items are shown in red.

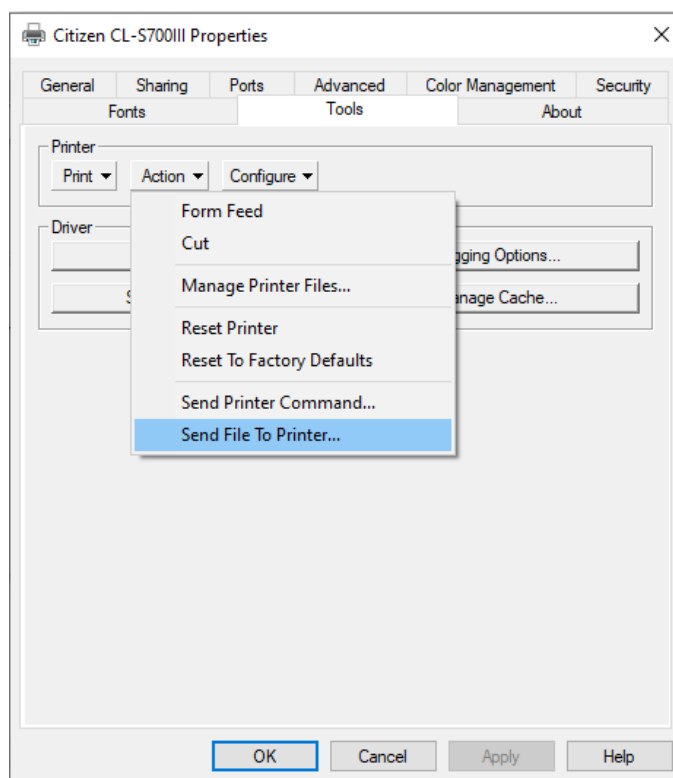


Configuration File

The configuration file can be opened and edited by e.g. 'Notepad'. Please don't edit control codes in the file, otherwise the configuration file could be corrupted.



The configuration file can be sent to the printer directly without importing to the utility by using '[Print Test](#)' tab. Or open printer properties and go to [Tools>Action>Send File To Printer] and select a configuration file.



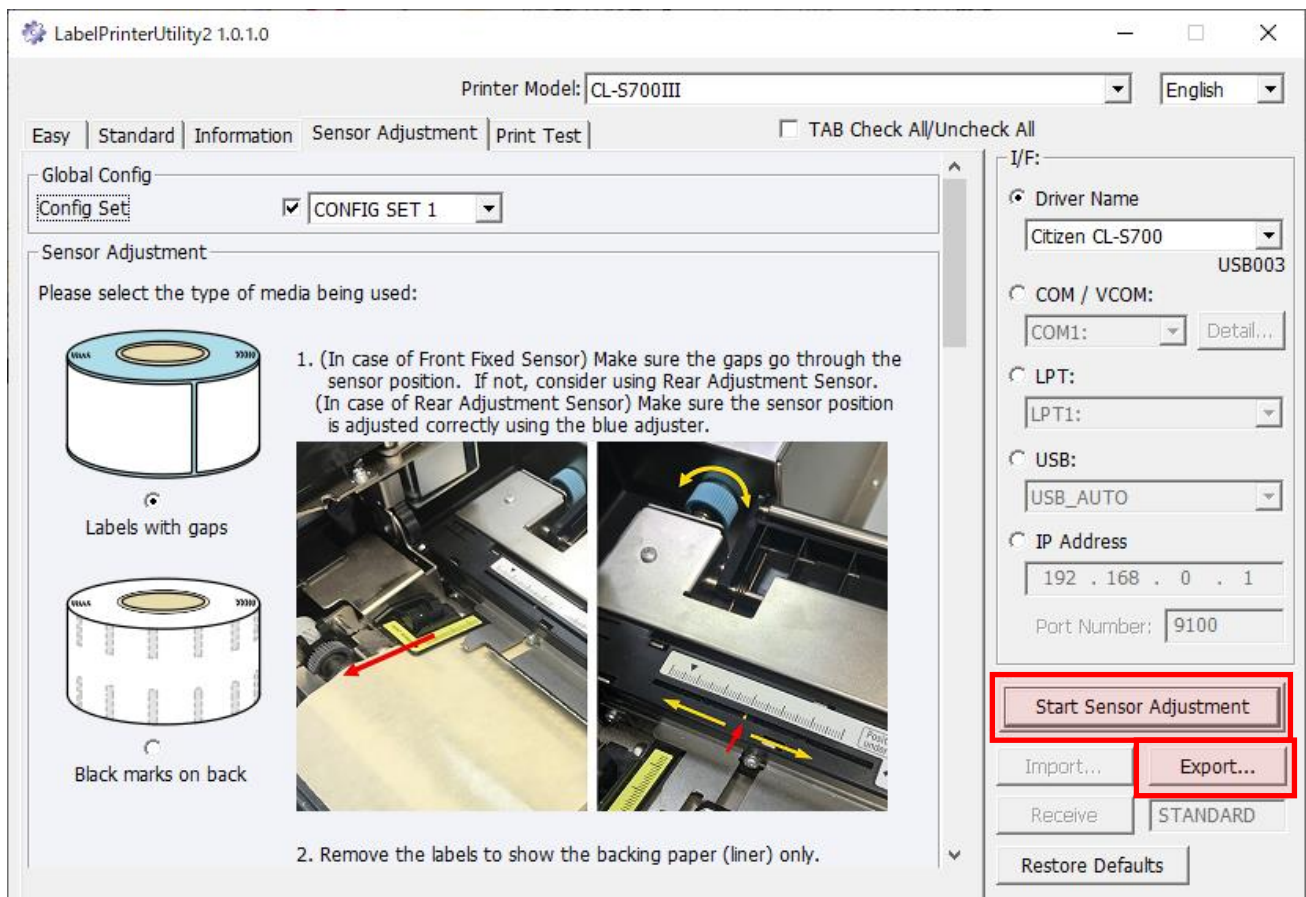
6. Media sensor adjustment

Sensor adjustment feature

The Sensor Adjustment tab helps you to let connected printer do the media sensor adjustment. Select "Config Set" (This operation is optional. The adjusted setting will be saved as the current setting when "Config Set" is not specified) and "type of media" and prepare the printer by following the instruction on the tab. After printer is prepared, click "Start Sensor Adjustment" button and start the adjustment.

Exporting a configuration file

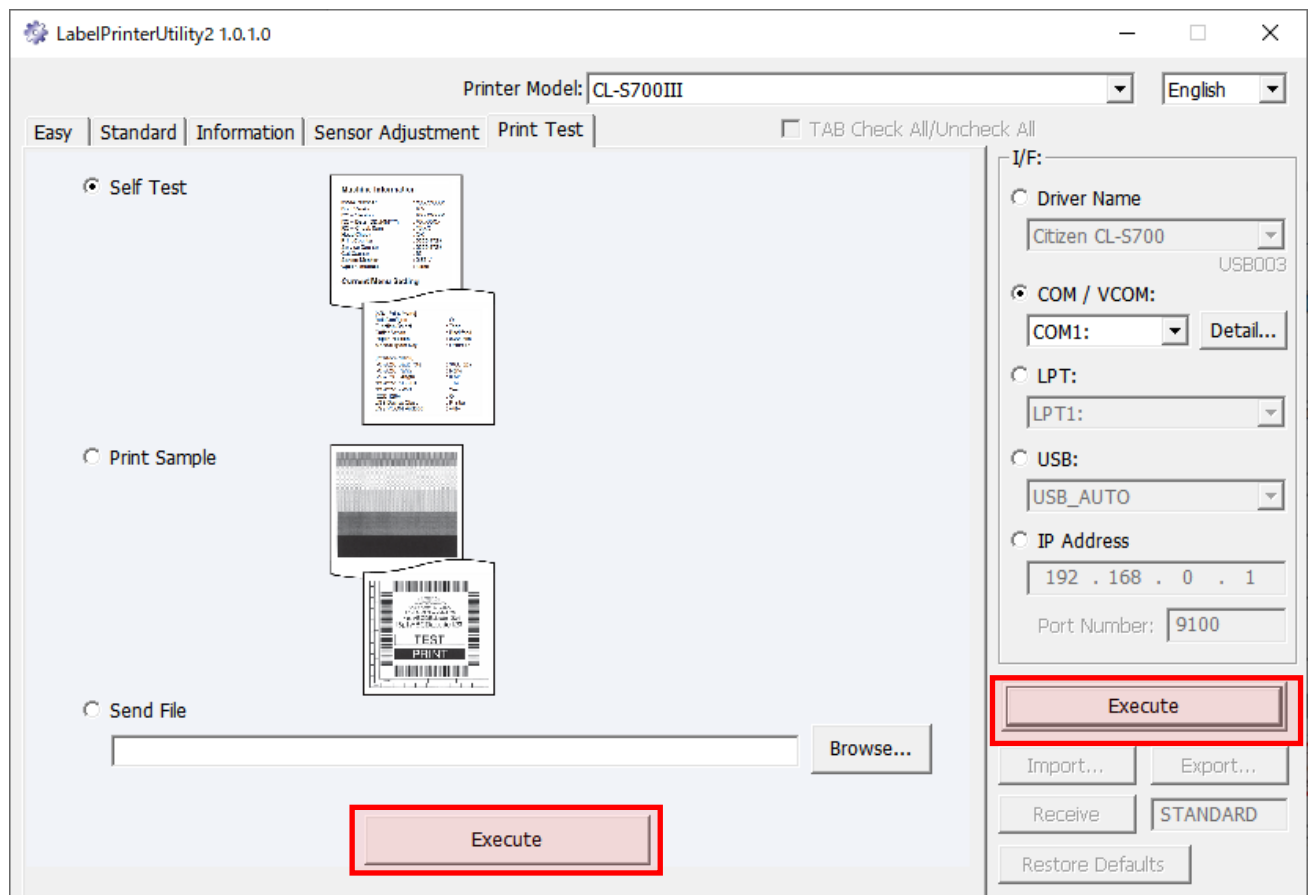
"Export" button saves the sensor adjustment command as a configuration file. By sending the file directly to printer, you can let the printer do the sensor adjustment. For how to send the file to the printer, please refer to "[Configuration File](#)".



7. Print Test

Print test feature

The Print Test tab let you to perform self-test print, sample pattern print, and send any print files to printer. Select "Print Type" and press the [Execute] button to perform a test print.



8. Restoring Default Settings & Exiting

[Restore Defaults] Button

The initial values for the selected printer model will be set to the configuration item area. This button doesn't initialize the printer directly but restore utility's UI to initial state for currently selected printer model.

Exiting

For closing the utility, please click "X" button on the top right corner of the window.

Label Printer Utility2 – User's Manual
Aug 29, 2024 Version 1.0.2.0
CITIZEN SYSTEMS JAPAN CO., LTD.
<http://www.citizen-systems.co.jp/>