

Printer Driver Instruction Manual

~ For Windows 7, 8, 10 ~

CX-02/CX-02 (s)

August 30, 2024 Ver. 1.0.2.2

CITIZEN SYSTEMS JAPAN CO., LTD.

- **Safety precautions**

Before you use the printer, carefully read the User Guide to ensure that you use the printer correctly. Be aware that the content complies with the standards at the time the User Guide section related to safety, including usage and safety precautions, was created.

- **Modifications**

To ensure product safety, modification of the CX-02/CX-02 (S) printer and CX-02/CX-02 (S) printer driver is prohibited.

- **Copyright**

The copyrights, trademark rights, and other intellectual property rights related to documents and programs included with this product are the property of CITIZEN SYSTEMS JAPAN CO., LTD. and other rights holders.

You cannot copy and use these items without the permission of CITIZEN SYSTEMS JAPAN CO., LTD. except where permitted by applicable laws.

Microsoft and Windows are trademarks or registered trademarks of Microsoft Corporation in the United States and in other countries.

- **About the country of delivery**

Not for resale/use in the U.S.

Table of Contents

Chapter 1 Installation..... 1

1.1 Prepare the printer and computer	2
1.2 Install the driver package.....	2
1.3 Install the printer driver	6
1.4 Install drivers for unspecified devices.....	10

Chapter 2 Properties..... 14

2.1 Open the printer properties	14
2.2 Print settings functions.....	16
2.2.1 Layout	16
2.2.2 Advanced options.....	17
2.2.3 Paper/Quality	23
2.2.4 Option	23
2.2.5 Color Adjustment	25
2.2.6 Printer information	26
2.3 Default values for settings	28
2.4 Color management	29
2.5 Print Area	30
2.6 Orientation.....	31

Chapter 3 Update the driver.....32

Chapter 4 Delete the driver 35

4.1 Automatic deletion of printer drivers	35
4.2 Manual deletion of printer drivers.....	36

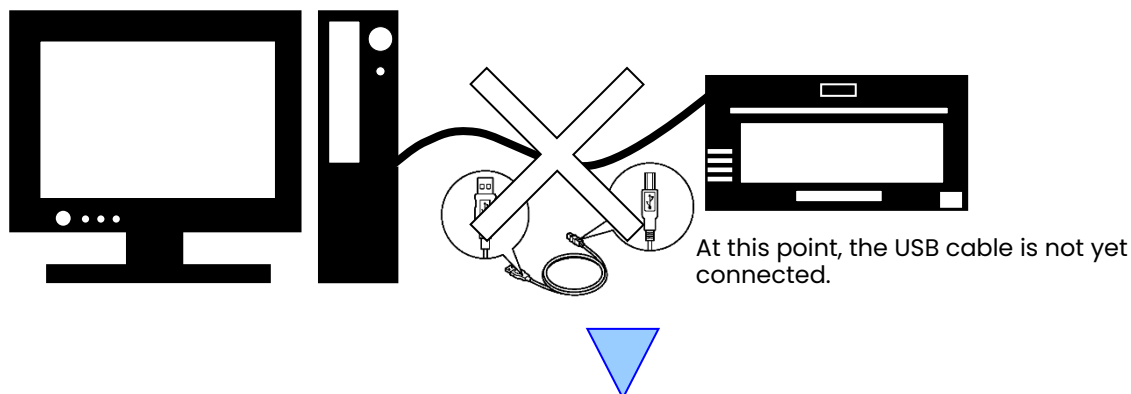
Chapter 1 Installation

Installation procedure

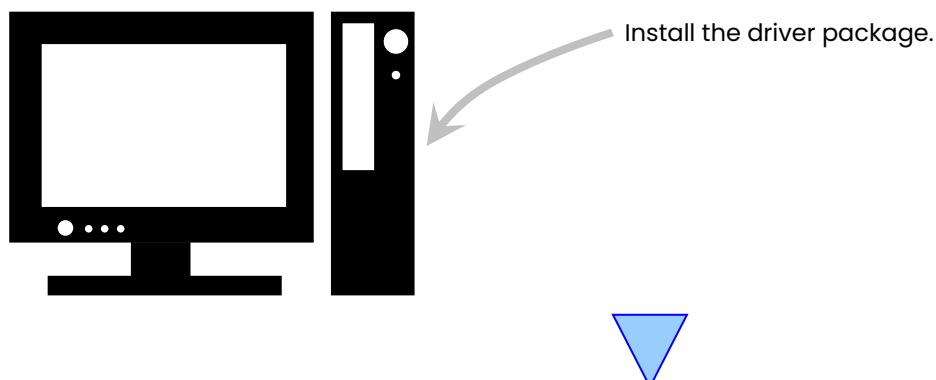
The installation procedure is made up of three steps.

The details of each step are explained below.

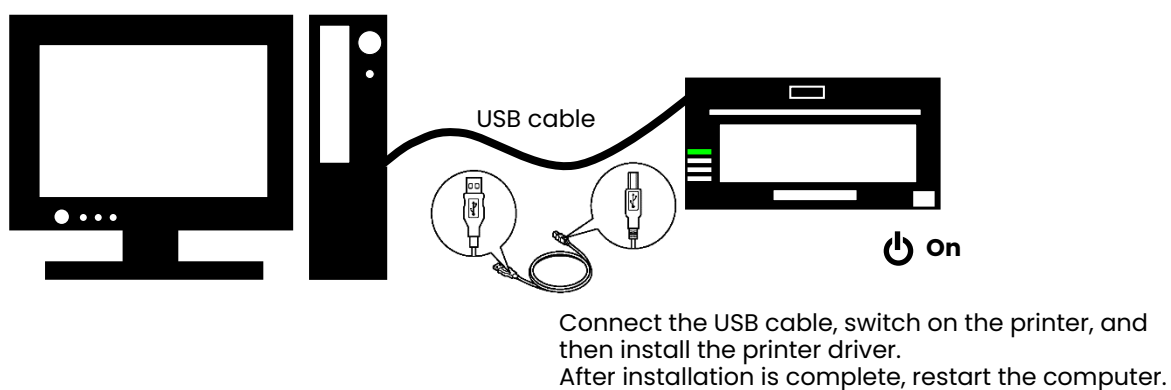
Step 1 Prepare the printer and computer → "1.1 Prepare the printer and computer"



Step 2 Install the driver package → "1.2 Install the driver package"



Step 3 Install the printer driver → "1.3 Install the printer driver"



1.1 Prepare the printer and computer

Make sure that the printer power is off.

Prepare a USB cable. However, do not use the USB cable to connect the printer and computer at this time.

Log in to Windows as an administrator. The following explanation presumes that the operations are carried out with administrator privileges.

CAUTION:

The display settings of the computer must be set as follows. If the settings differ from the following, the printing preferences screen and other items may not fit in the display area.

Resolution: At least 1280x800

Size of text and other items (DPI): 100%

1.2 Install the driver package

Open Windows Explorer, and then click the corresponding drive.

Select one of the following driver package folder.

[Driver package folder]\CX-02_Driver

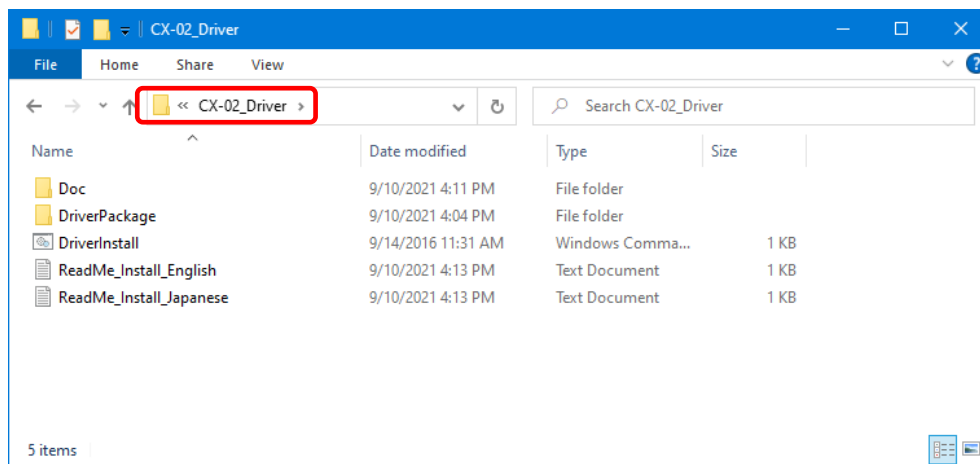


Figure 1.2.1 Driver Package folder

In the selected folder, double click the following file: DriverInstall.CMD. (Depending on your usage environment, the .CMD extension may not be displayed.)

The driver package installer appropriate for your operating system (32-bit or 64-bit) is selected automatically.

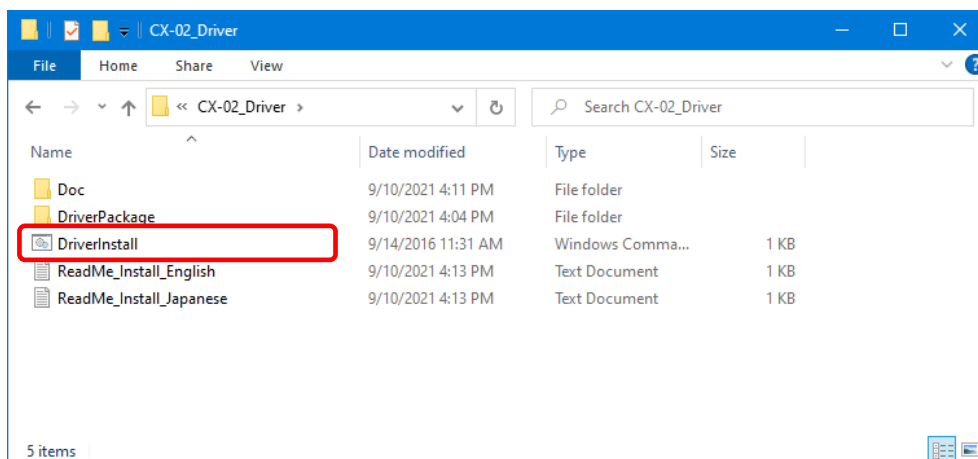


Figure 1.2.2 Installation file

When you start the installer, a window appears for selecting the language that will be used during the installation. After you select the language to use, click "OK".

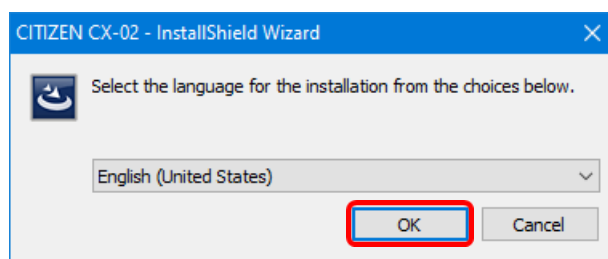


Figure 1.2.3 Language selection screen

Click "Next >" when the Installation Wizard screen appears.

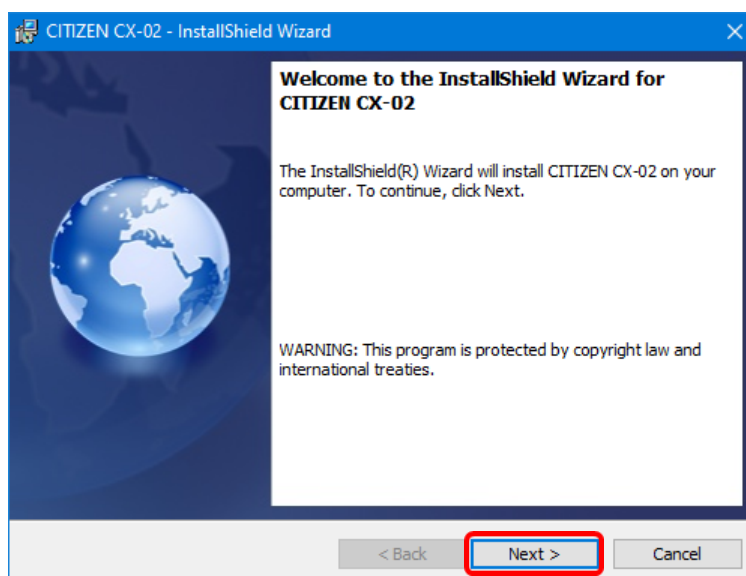


Figure 1.2.4 Installation Wizard start screen

Click "Install" when the installation is ready.

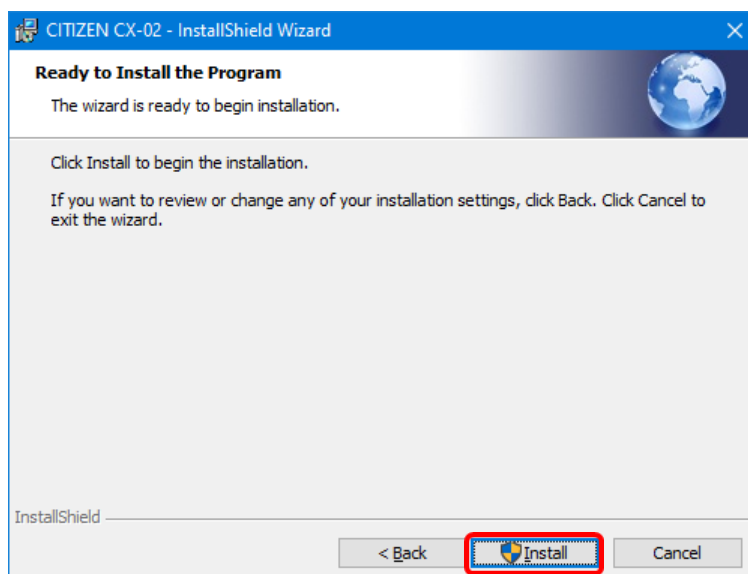


Figure 1.2.5 Installation start confirmation screen

When the installation starts, a screen appears that shows the installation status.

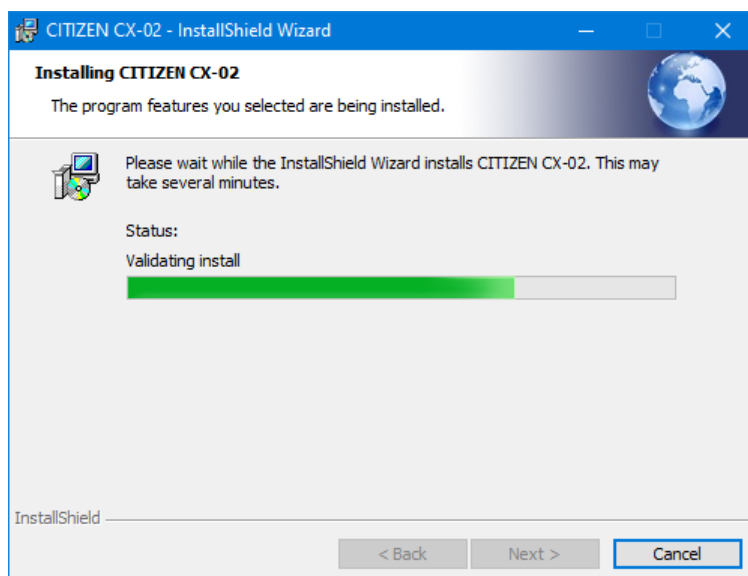


Figure 1.2.6 Installation status screen

When a User Account Control dialog box appears, click "Yes".

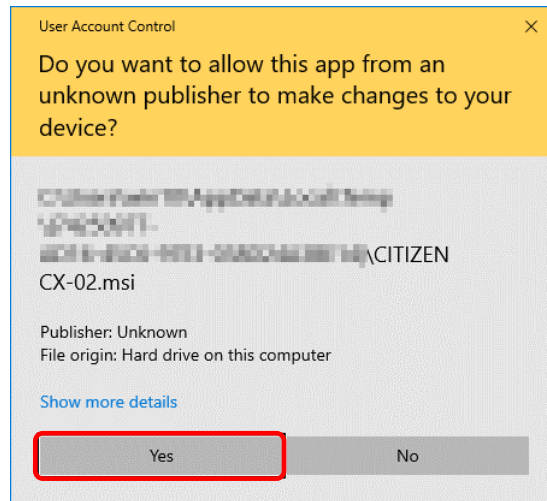


Figure 1.2.7 User Account Control

Click "Install" when the Windows Security confirmation display appears.

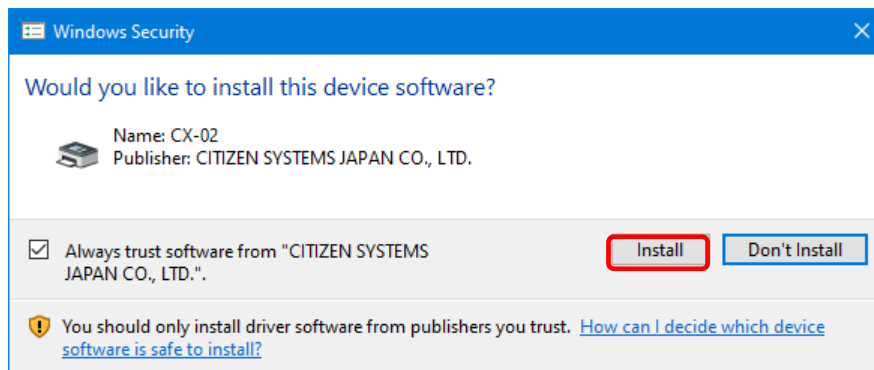


Figure 1.2.8 Windows Security confirmation

Installation of the driver package starts. Wait until installation finishes. Click "Finish" when the Installation Wizard completion screen appears.

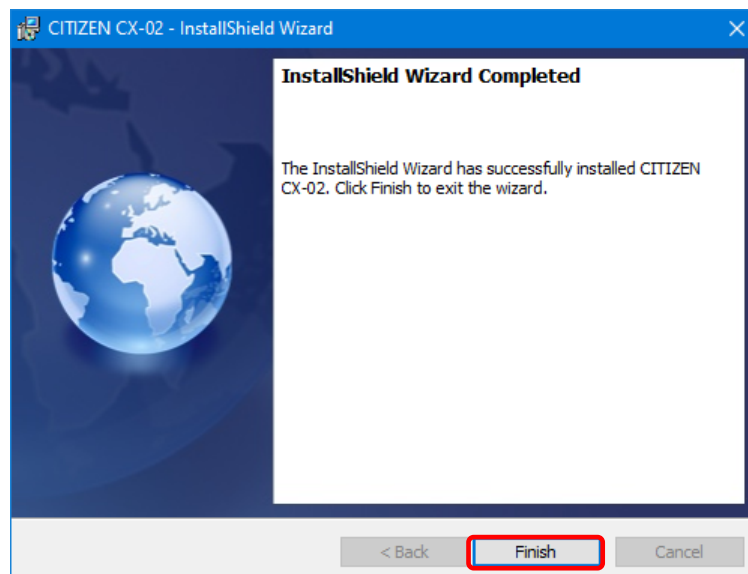


Figure 1.2.9 Finish of Installation Wizard

1.3 Install the printer driver

Use the USB cable to connect the printer and computer, and then switch on the power of the printer. After the printer is recognized, installation of the driver starts.

*For the connection, see the User's manual of the printer.

In Windows 7, if driver installation starts, the following message appears in the taskbar: "Installing device driver software".

In Windows 8 and 10, this message does not appear. Proceed to page 8.

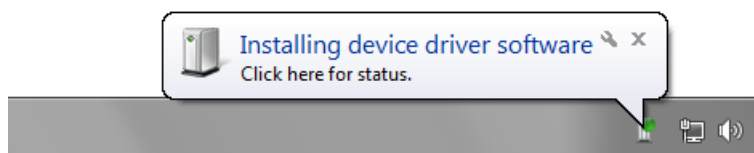


Figure 1.3.1 Driver installation message

If you click on this message, the Driver Software Installation screen appears and displays the installation status of the driver. If "Close" is clicked, this screen closes.

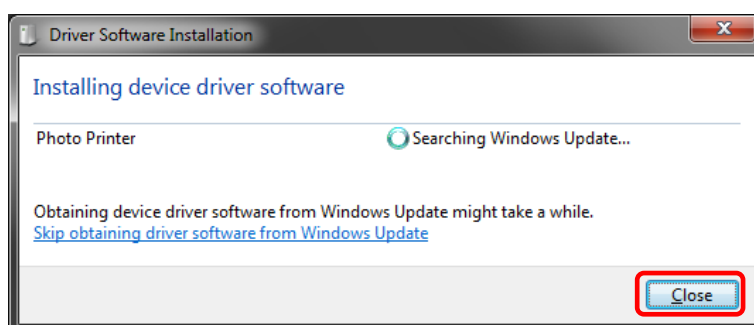


Figure 1.3.2 Installing the driver software

*About the "Skip obtaining driver software from Windows Update" option

If your operating system is configured to obtain driver software from Windows Update, it may take time for installation to complete because the process searches for drivers from Windows Update first. You can reduce the time until the completion of installation by choosing to skip obtaining driver software from Windows Update. (Depending on your operating system, it may take some time until installation is complete.)

From the Driver Software Installation dialog box, click "Skip obtaining driver software from Windows Update".

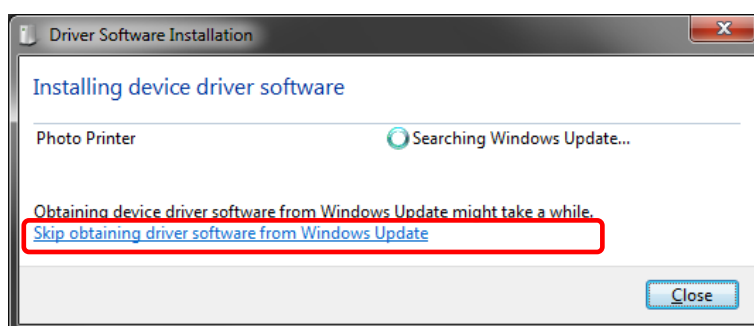


Figure 1.3.3 Option to skip obtaining driver software from Windows Update

A confirmation dialog box appears. Click "Yes".

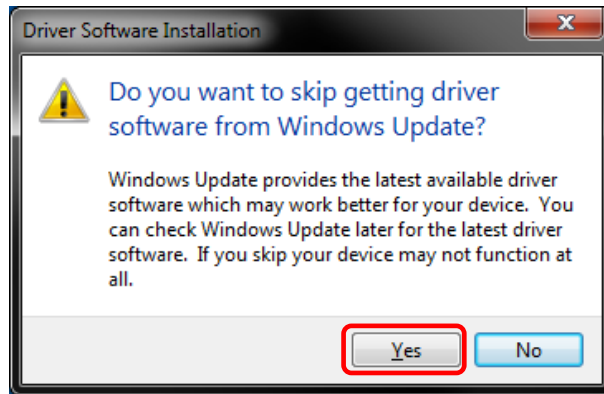


Figure 1.3.4 Confirmation to skip getting driver software from Windows Update

Soon after installation starts, a message appears in the taskbar stating "Your device is ready to use", and then printer driver installation finishes.

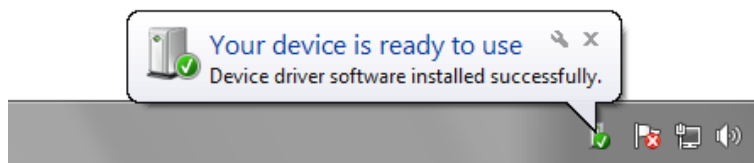


Figure 1.3.5 Installation complete message

If you click on the message, the Driver Software Installation dialog appears, and the "Your device is ready to use" message appears. Click "Close".

(If the Driver Software Installation screen is open when installation starts, the abovementioned taskbar message is not displayed.)

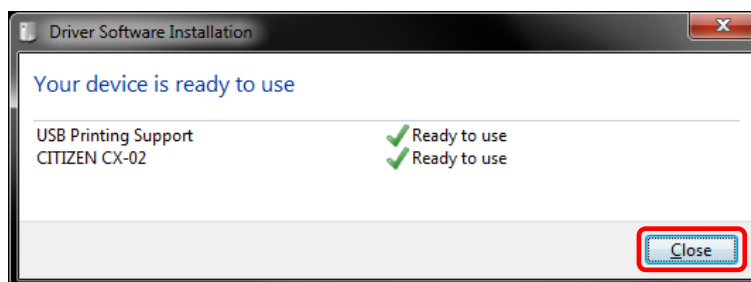


Figure 1.3.6 Completion of driver software installation

Click "Start", and then click "Windows System" -> "Control Panel" to open the Control Panel.

In Windows 7, click "Start", and then click "Control Panel" to open the Control Panel.

In Windows 8, right click the "Start" screen. In the bottom right area, select "All Apps", and then select "Control Panel".

In Control Panel, click "View devices and printers".

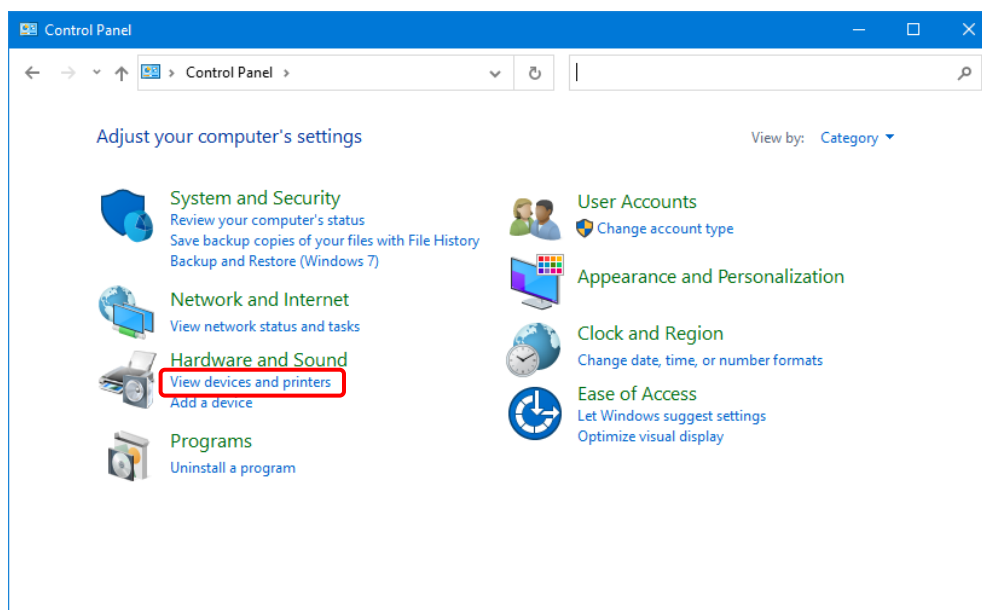


Figure 1.3.7 Control Panel

In Devices and Printers, make sure that "CITIZEN CX-02" is present.

Note: In Windows 8 and 10, when the printer is offline (the printer is not on and connected), "CITIZEN CX-02" icon is not displayed.

This completes installation of the CITIZEN CX-02 printer driver.

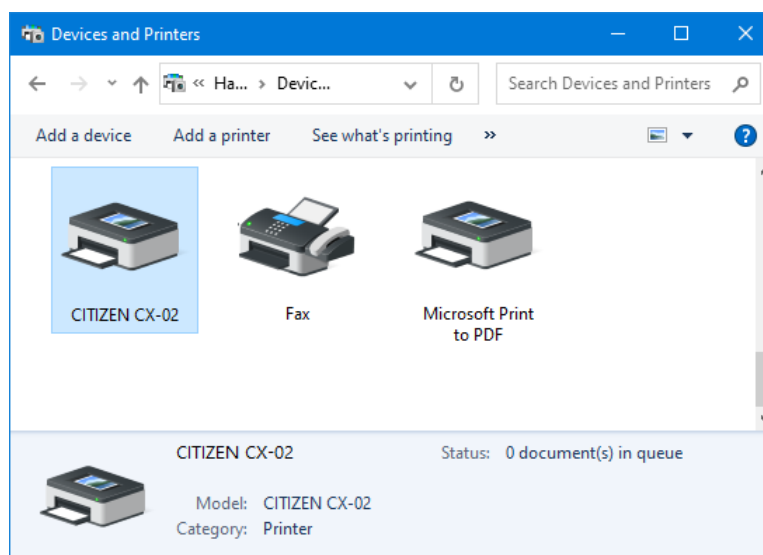


Figure 1.3.8 Devices and Printers screen

After the installation of the printer driver is complete, always restart the computer.

In Windows 7, when it was not possible to install the printer driver correctly, the following message appears in the taskbar: "Device driver software was not successfully installed".

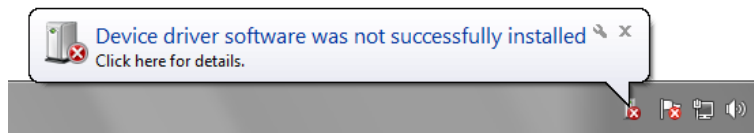


Figure 1.3.9 Message indicating that the driver was not installed

If you click on this message, the Install driver software screen appears and displays the message "Device driver software was not successfully installed". Click "Close".

(If the Driver Software Installation screen is open when installation starts, the abovementioned taskbar message is not displayed.)

When the driver could not be installed correctly, see the next section, "1.4 Install drivers for unspecified devices", and then install the printer driver.

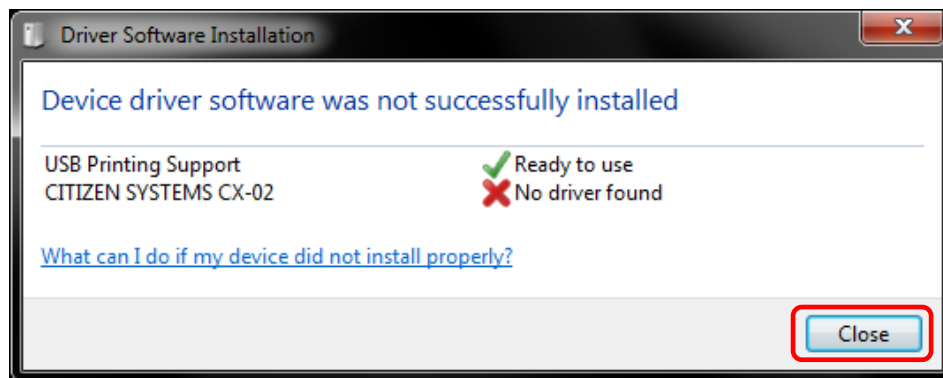


Figure 1.3.10 When the driver was not installed correctly

1.4 Install drivers for unspecified devices

If you connect a printer that is on to the computer before installing the driver package, a device is created under “Unspecified” in Devices and Printers.

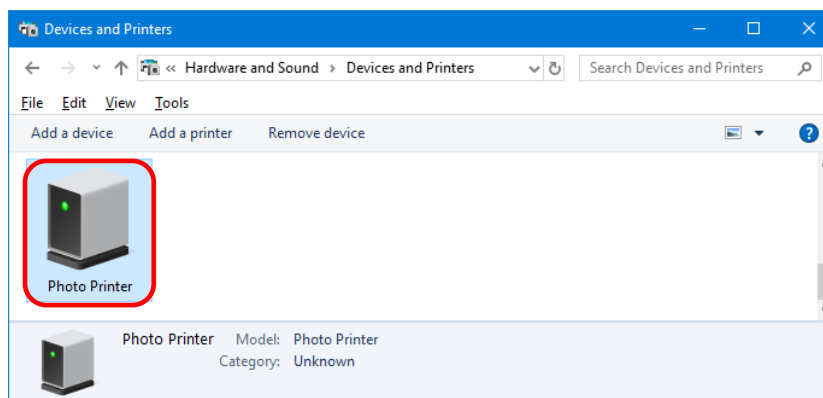


Figure 1.4.1 Photo Printer under Unspecified

In such a case, use the following method to install the printer driver.

Furthermore, use the following method to install the printer driver if you use the standard installation procedure (install the driver package, connect the printer, and then install the printer driver), but the driver is not installed correctly, and a device is created under “Unspecified”.

1. Install the driver package

When the driver package has not yet been installed, install it by following the procedure in “1.2 Install the driver package”.

If you install the driver package, installation of the printer driver for the unspecified device completes it automatically.

2. Installing a driver for an unspecified device

After installing the driver package, the driver installation procedure for an “Unspecified” device is different for Windows 7 and Windows 8,10.

For Windows 8, 10, refer to page 11.

For Windows 7, refer to page 12.

In Windows 8,10:

- 1) Right-click "Photo Printer" of the "Unspecified" device in "Devices and Printers", and click "Remove device" from the pull-down menu.

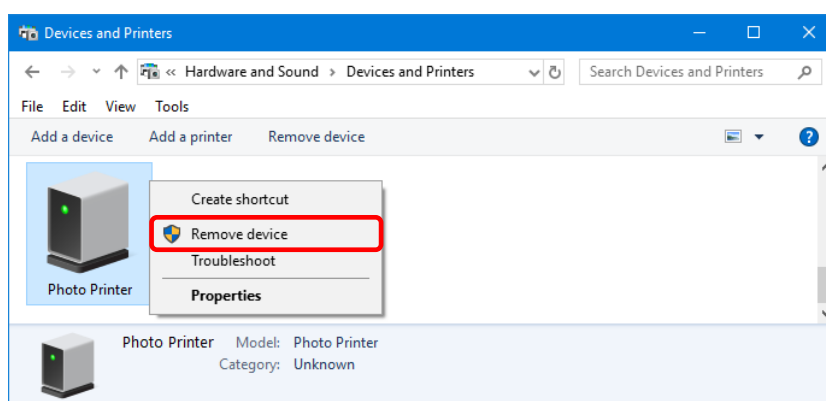


Figure 1.4.2 Delete "Photo Printer"

- 2) Disconnect the USB cable connected to the printer.
- 3) Restart your computer.
- 4) After starting up the computer, connect the USB cable again and turn on the printer.

In Devices and Printers, make sure that "CITIZEN CX-02" is present.

Note: When the printer is offline (the printer is not on and connected), the "CITIZEN CX-02" icon is not displayed.

This completes installation of the printer driver.

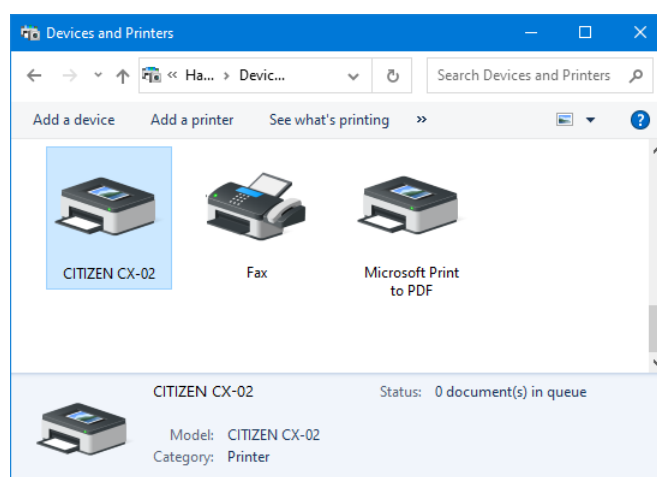


Figure 1.4.3 Devices and Printers screen

After the installation of the printer driver is complete, always restart the computer.

In Windows 7:

In “Devices and Printers”, under “Unspecified”, right click on “Photo Printer”. From the menu, click “Troubleshoot”.

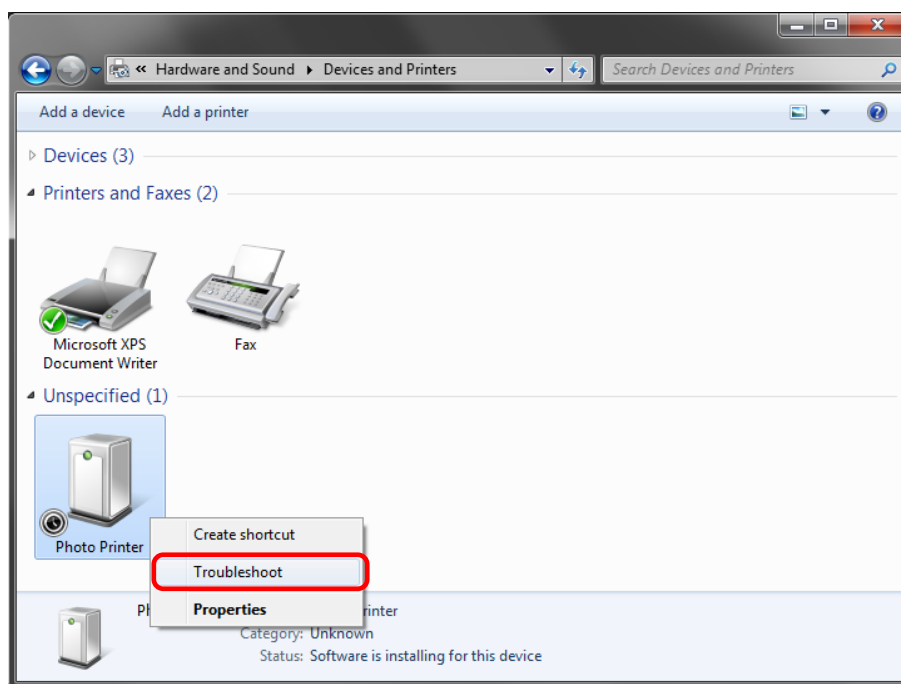


Figure 1.4.4 Photo Printer under Unspecified

The Install a driver for this device screen appears. Click “Apply this fix”. The computer searches for a driver automatically, and then installs it.

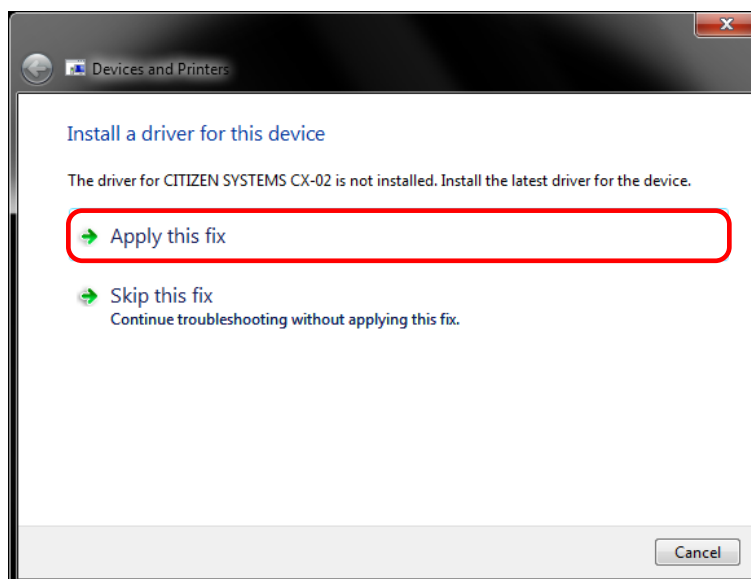


Figure 1.4.5 Applying a fix

If the driver is installed, the message "Troubleshooting has completed" appears. Click "Close the troubleshooter" to close the troubleshooting window.

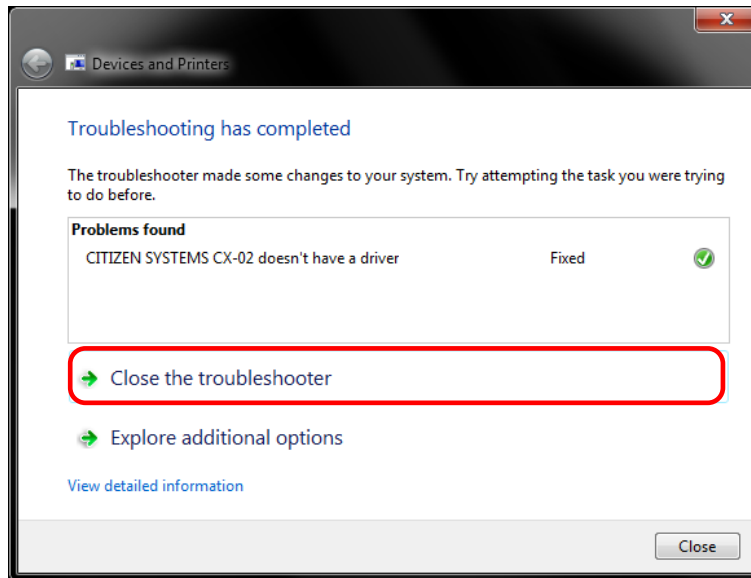


Figure 1.4.6 Completing troubleshooting

In Devices and Printers, make sure that "CITIZEN CX-02" is present. This completes installation of the printer driver.

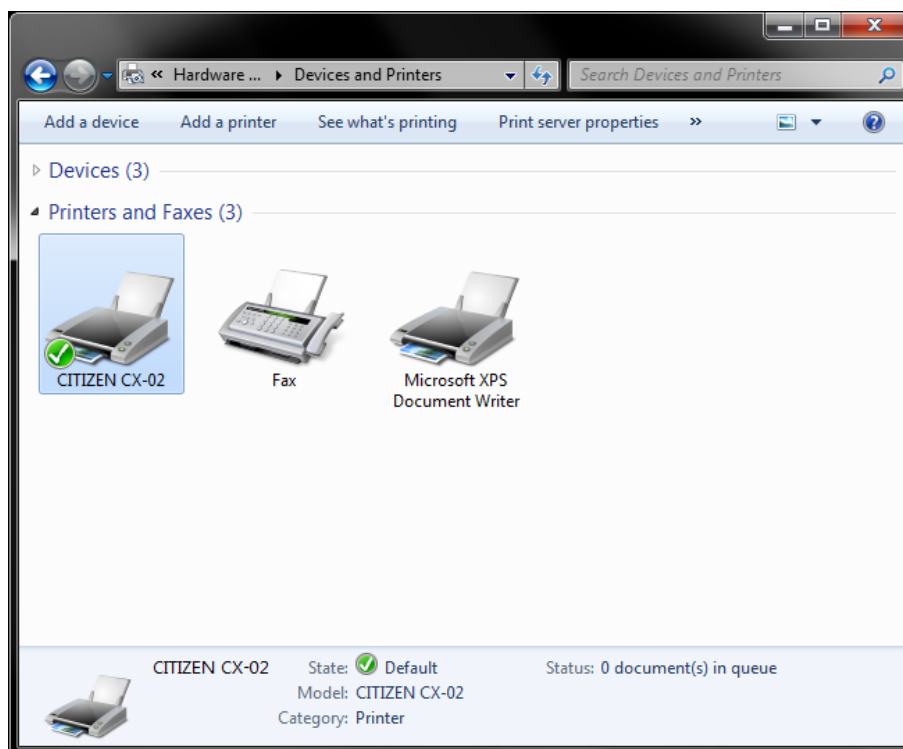


Figure 1.4.7 Devices and Printers screen

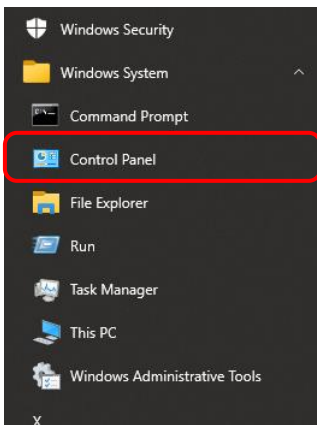
After the installation of the printer driver is complete, always restart the computer.

Chapter 2 Properties

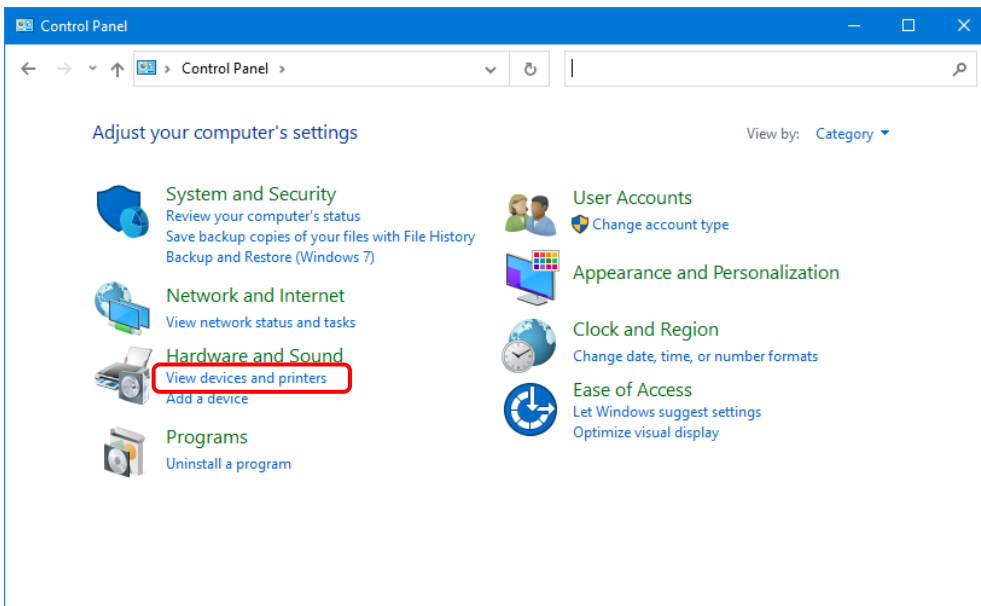
You can configure various printer settings from the Properties of the driver. Make sure you understand the contents well before changing settings. To use the properties, log in as an administrator. Depending on the application you are using, you must perform this operation from the print settings of the application.

2.1 Open the printer properties

1. Click the "Start", click "Windows System", and then click "Control Panel" to open the Control Panel.
In Windows 7, Click "Start", and then click "Control Panel" to open the Control Panel.
In Windows 8, right click the "Start" screen, click "All Apps", and then click "Control Panel" to open the "Control Panel".

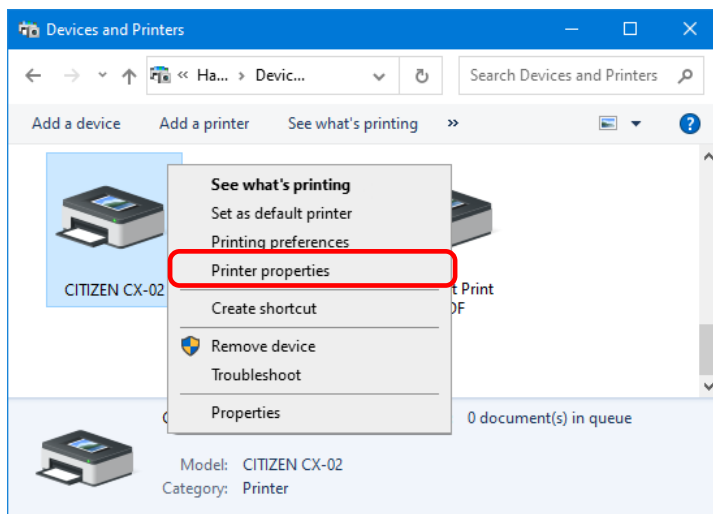


2. From the Control Panel, click "View devices and printers" to open the Devices and Printers screen.

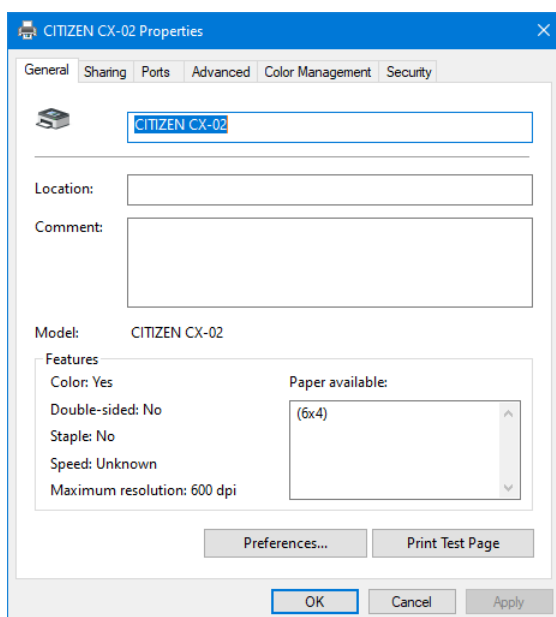


3. Right click "CITIZEN CX-02" icon. From the menu, click "Printer Properties" to open the Properties dialog box.

Note: In Windows 8 and 10, when the printer is offline (the printer is not on and connected), "CITIZEN CX-02" icon is not displayed.



4. CITIZEN CX-02 Properties screen appears.



2.2 Print settings functions

If you select the basic settings from the Properties screen, you can change various print settings.

2.2.1 Layout

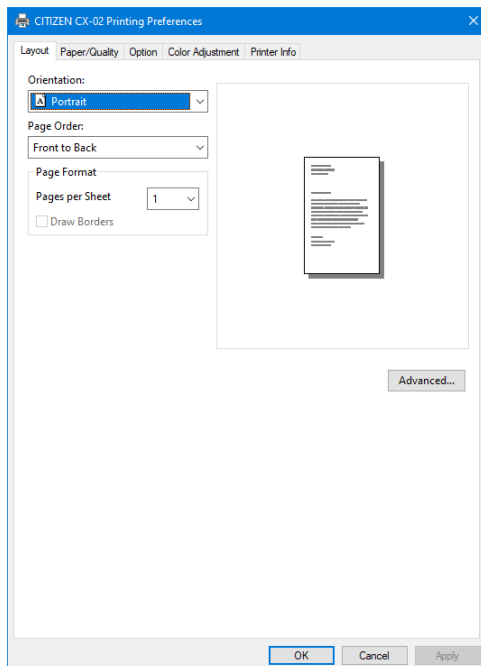


Figure 2.2.1 Layout tab

Orientation

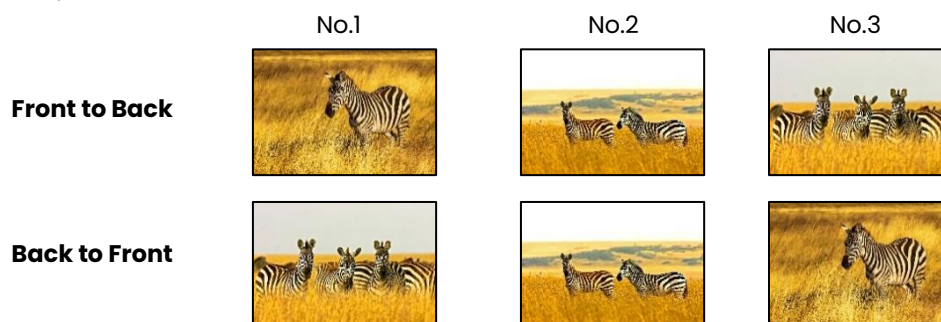
Set the print orientation to "Portrait" or "Landscape".

For details, refer to "2.6 Orientation".

Page Order

In the application, specify the order when multiple copies of an image are printed.

Example) Print order



Page Format

Pages per Sheet

Set printing of the specified division size. In most situations, set "1".

Example) Division size



2.2.2 Advanced options

If you select "Advanced..." on the Layout tab, you can configure various advanced options.

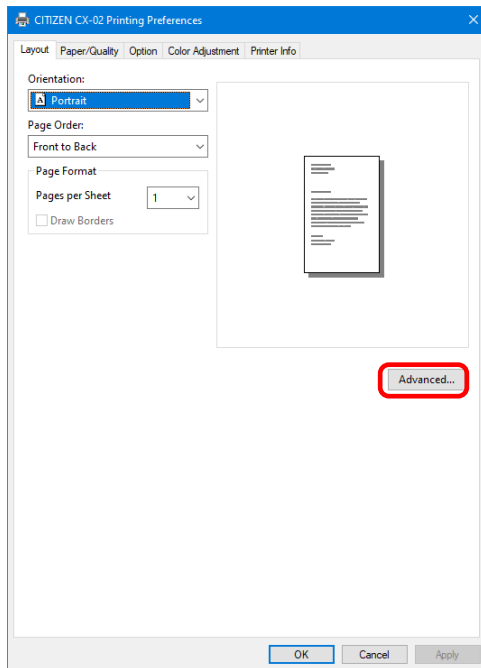


Figure 2.2.2.1 Advanced settings

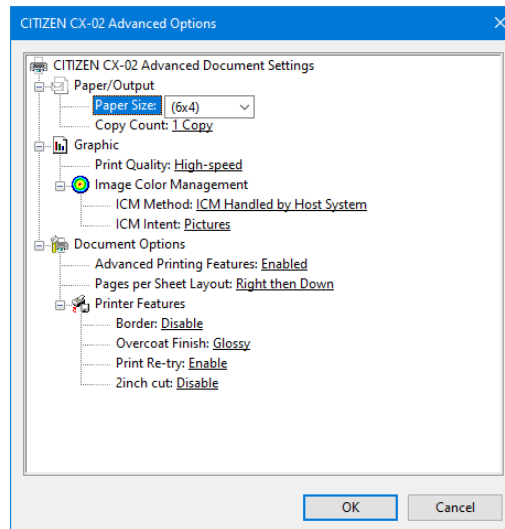


Figure 2.2.2.2 Advanced options tab

Paper/Output

Paper Size

Specify the paper size. Match the paper size with the size of the media set in the printer.

You can enable multiple layout settings by setting the paper size. See later sections for details.

Copy Count

You can specify the number of copies to be published for images.

Graphic**Print Quality**

Specify the resolution.

Print quality	Function
High-speed	Print using high speed mode
High-quality	Print using high quality mode

ICM Method

ICM Method	Function
ICM Disabled	Synchronized with "Color Adjustment Disabled" in the 2.2.4 Option.
ICM Handled by Host System	Synchronized with "Color Adjustment ICM" in the 2.2.4 Option. Manage colors using the driver.
ICM Handled by Printer	When this item has been selected, operation is the same as "ICM Handled by Host System".

ICM Intent

Set the rendering method when using ICM. For the ICC profile, always set to "Pictures".

Do not use other settings.

Document Options**Advanced Printing Features**

Always set "Enabled". Do not use other settings.

Pages per Sheet Layout

Set the layout direction of an image when the Pages per Sheet setting is set for multiple divisions.

Printer Features**Border**

Synchronized with Border in the Option.

Overcoat Finish

Set the overcoat finish method for the surface of printed items from the following four types.

Overcoat Finish	Function
Glossy	Create an item with a glossy finish.
Matte	Create an item with a matte finish.
Luster	Create printouts with rough surface and semi-gloss finish that has less glare.
Fine Matte	Create printouts with fine grain and strong matte finish. (*1)

*1: Supported by version 01.01 and later.

*CX-02 (S) can only print with a glossy finish. Even if settings are set to an overcoat finish other than glossy, these settings will not be applied.

Print Re-try

Specify whether to print data in the printer buffer after a printer error has been cleared.

Print Re-try	Function
Disable	Clear the print data in the printer buffer when a printer error occurs. You must send the cleared print data again after the error is cleared. When you use an application with an error recovery function, select this option.
Enable	Save print data in the printer buffer when an error occurs. The printing process is restarted from the saved data after the error is cleared. Note that if the power is switched off, the data is not saved.

Depending on the content of the printer error, it may be necessary to restart the printer to clear the error. In such cases, the print data in the printer buffer is cleared regardless of the Print Re-try setting.

The following section shows the operation for each Print Re-try setting by error.

Error content	When Print Re-try is disabled	When Print Re-try is enabled
Paper end	You must send the unprinted image data again after the error is cleared.	The printing process is restarted from the data saved in the printer buffer after the error is cleared. When the paper initialization operation is to be carried out, printing occurs afterwards.
Ribbon end		
Cover open		
Paper jam (*1)		
Ribbon error (*1)		
Paper setting error		
Data error	Because the printer must be switched on and off to clear the error, the print data in the printer buffer is cleared regardless of the Print Re-try setting. After the printer has restarted, you must send the unprinted image data again.	Because the printer must be switched on and off to clear the error, the print data in the printer buffer is cleared by switching the printer off, even when the Print Re-try setting is Enabled. After the printer has restarted, you must send the unprinted image data again.
Head voltage error		
Head position error		
Power supply fan stopped		
Cutter error		
Head temperature error		
Media temperature error		
RFID module error		
System error		

*1: After the printer stops due to an error, follow the User Guide of the printer to eliminate the cause of the paper or ribbon error.

2inch cut

Specify whether to cut paper into multiple sheets with a 2-inch length when you use a specified paper size.

2inch cut	Function
Disable	Cut at the normal size.
Enable	Cut at 2-inch lengths so that the 6 x 4 size becomes two sheets and the 6 x 8 size becomes four sheets.

◀Multiple layout▶

When 5 x 7, 6 x 8 or 6 x 9 media is used, you can use a two-picture layout. You can enable multiple layout settings by setting the paper size of the printer driver. If it sends multiple images from the application, the printer driver allocate them automatically as the multiple layout.

The following section shows the image sizes.

Layout settings

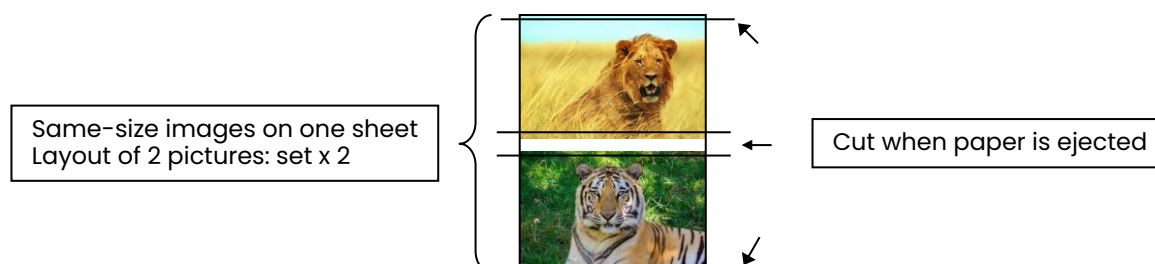
Driver paper size setting	Paper direction	Paper size length x height (mm)	Media used
(5x3.5)	Portrait	131.1x 92.1	5x7, 6x8, 6x9
	Landscape	92.1x131.1	
PR (3.5x5)	Portrait	92.1x131.1	
	Landscape	131.1x 92.1	
(6x4)	Portrait	156.1x105.0	6x8, 6x9
	Landscape	105.0x156.1	
PR (4x6)	Portrait	105.0x156.1	
	Landscape	156.1x105.0	
(6x4.5)	Portrait	156.1x117.3	6x9
	Landscape	117.3x156.1	
PR (4.5x6)	Portrait	117.3x156.1	
	Landscape	156.1x117.3	

Note) Depending used conditions, the rewinding print might be carried out instead of the multiple layout.

Because they are carried out by the print job, multiple layout are carried out when there are multiple images in a single job.

If you want to layout the same image, send the same number of images as the umber-of-sheets setting.

The printer handles two pictures at one time and cuts the paper after it is ejected.


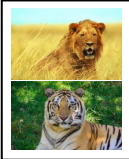
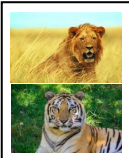



<Rewind Print function>

If you set the paper size setting to (6 x 4) when printing 6 x 4 size to 6 x 8 size media, printing is optimized to reduce consumption of the ribbon.

Furthermore, if you set the paper size setting to (5x3.5) or (6x4.5) when printing 5 x 3.5 size to 5 x 7 size media or when printing 6 x 4.5 size to 6 x 9 size media, printing is similarly optimized to reduce consumption of the ribbon.

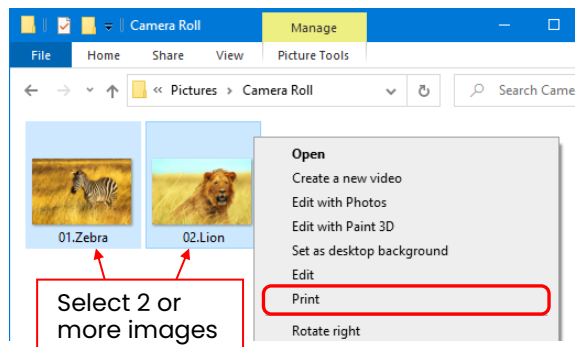
The following shows the difference in ribbon consumption when the paper size is set to (6x4) for 6x8-sized media.

	CX-02/CX-02 (S)
When printing one sheet at 6 x 4 size once	 <p>Used for the next printing</p> <p>*After printing, the ribbon is rewound and adjusted to the next print position.</p>
When printing one sheet at 6 x 4 size twice	 <p>*After the first sheet is printed, the ribbon is rewound, and the second sheet is printed.</p>
When printing two sheets at 6 x 4 size once	 <p>*Two sheets are printed at the same time in a multiple layout.</p>
When printing one 6 x 4 size sheet once, and then printing two 6 x 4 size sheets once	 <p>Used for the next printing</p> <p>*After the first sheet is printed, the ribbon is rewound, and the second and following sheets are printed. Furthermore, after the third sheet is printed, the ribbon is rewound and adjusted to the next print position.</p>

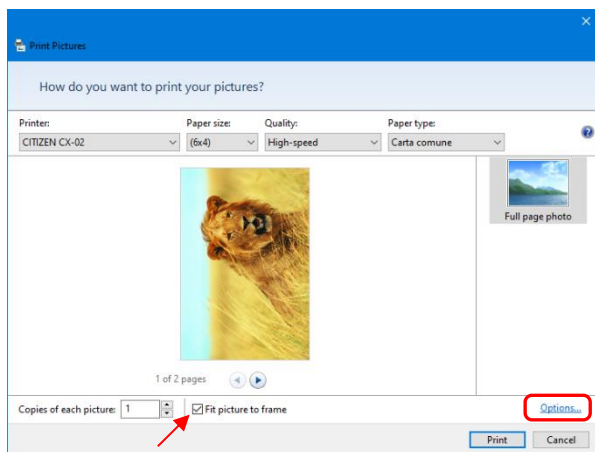
◀Application usage example▶

This usage example uses Windows Explorer.

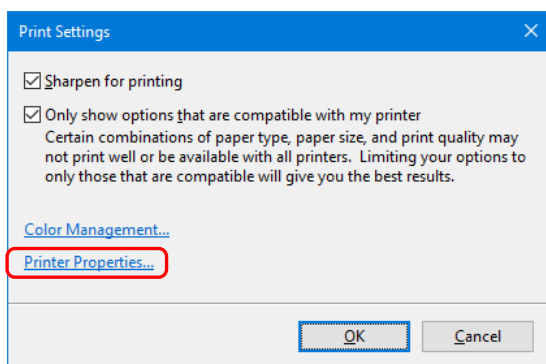
Step 1. In Windows Explorer, select two or more pictures.
Next, click "Print".



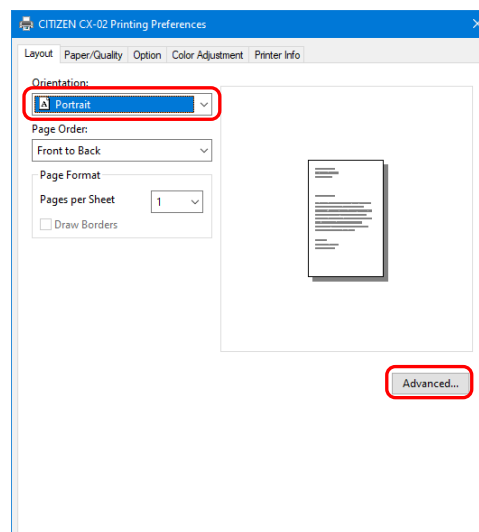
Step 2. Select "Fit picture to frame" check box, and then click "Options...".



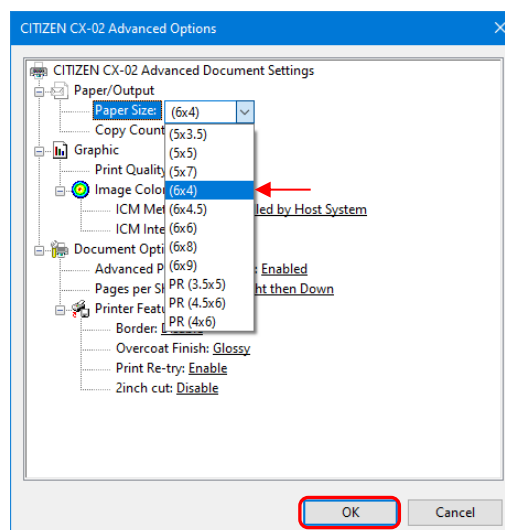
Step 3. Click "Printer Properties...".



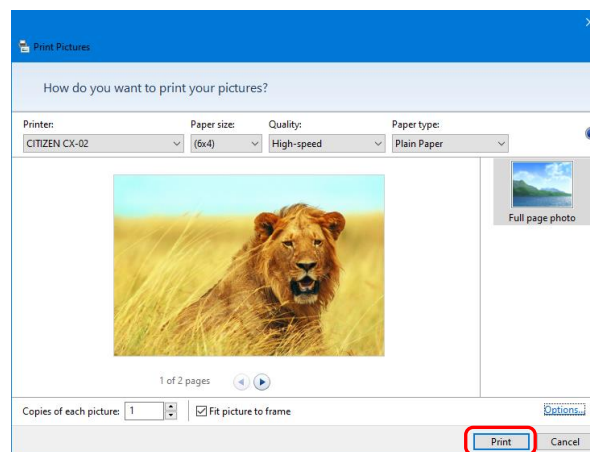
Step 4. Set the Orientation to "Portrait", and click "Advanced...".



Step 5. Set the paper size to the setting of the multiple layout.
Click "OK" twice to close the dialog boxes in Step 5 and 4.



Step 6. Click the "Print" button.



2.2.3 Paper/Quality

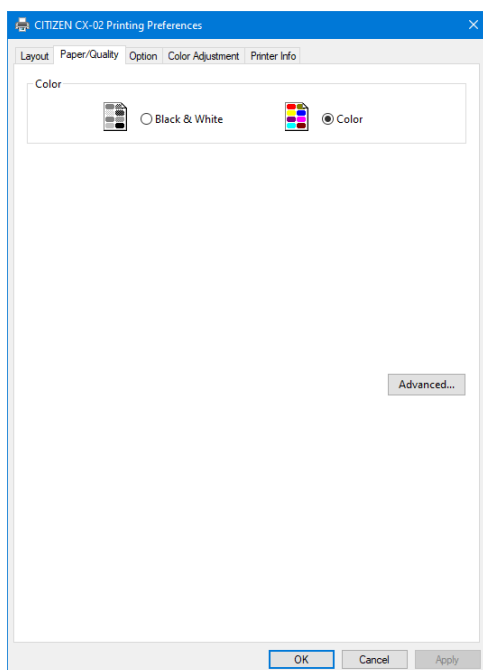


Figure 2.2.3 Paper/Quality tab

Color

Set Color. Do not use black and white.

2.2.4 Option

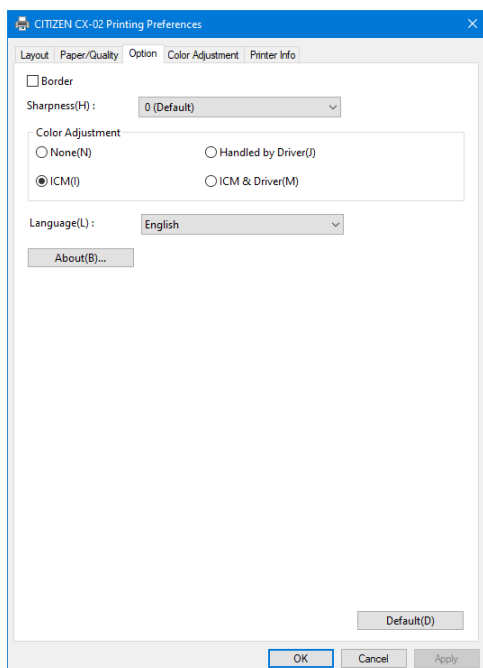


Figure 2.2.4.1 Option tab

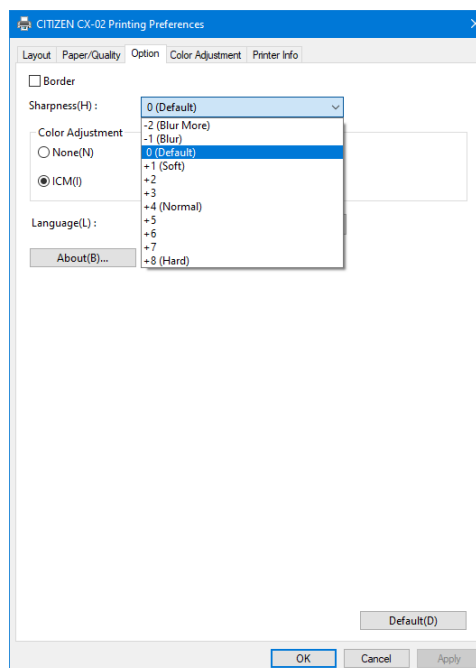


Figure 2.2.4.2 Sharpness setting

Border

Specify a border for printing. (Select the check box for a border.) Synchronized with Border Enable / Disable in the Advanced settings.

Sharpness

Process sharpness using one of the 11 stages (Figure 2.2.4.2). If the setting is "0 (Default)", sharpness is not processed.

Moving to the minus (-) side blurs the image and moving to the plus (+) side sharpens the image.

Color Adjustment

None

Synchronized with the ICM Method in the Advanced settings. If this check box is selected, ICM is disabled, the Color adjustment tab is also disabled, and the printer driver does not carry out color adjustment.

Handled by Driver

If this check box is selected, ICM is disabled, and the 2.2.5 Color Adjustment is enabled.

The result is applied to the adjustment values of the following items: Gamma, Brightness, Contrast, and Chroma.

ICM

Synchronized with the ICM Method of the Advanced settings (ICM Handled by Host System).

If this check box is selected, the driver manages colors.

ICM & Driver

If this check box is selected, ICM (color management) and the 2.2.5 Color Adjustment are enabled.

Language

Change the display language for the following items: "Option", "Color Adjustment", and "Printer Info".

The selected language is enabled the next time the print settings are displayed.

[Available languages]

- Japanese
- English (US)
- French (France)
- German (Germany)
- Russian (Russia)
- Spanish (Spain)
- Italian (Italy)
- Korean
- Chinese (People's Republic of China)
- Chinese (Taiwan)

When your operating system environment corresponds with one of the above settings, the default display language is the language of the corresponding country. Furthermore, when your operating system environment does not correspond with one of the above settings, the default display language is English.

To use a language different from that of your operating system, you must install the following font for the corresponding language.

Language	Font
Japanese	Meiryo / Yu Gothic UI <Windows 10>
English (US)	Segoe UI
French (France)	Segoe UI
German (Germany)	Segoe UI
Russian (Russia)	Segoe UI
Spanish (Spain)	Segoe UI
Italian (Italy)	Segoe UI
Korean	Malgun Gothic
Chinese (People's Republic of China)	Microsoft YaHei
Chinese (Taiwan)	Microsoft JhengHei

About

Show the driver version.

2.2.5 Color Adjustment

If the Handled by Driver check box is selected in the 2.2.4 Option, the adjustment values of the Color Adjustment tab are applied to the image.

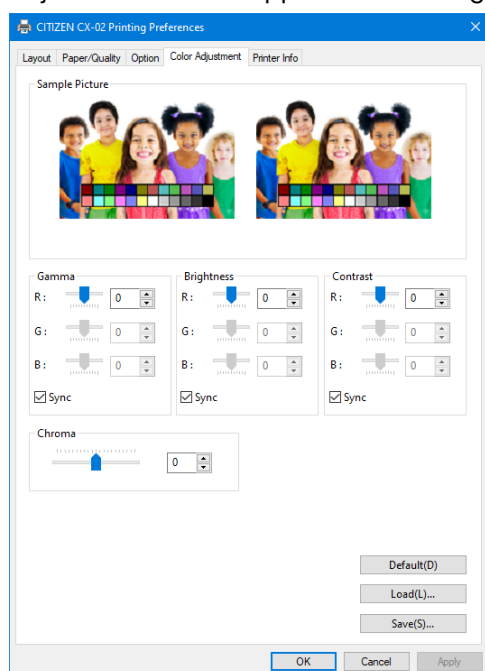


Figure 2.2.5 Color Adjustment tab

The following section shows the setting ranges on the Color Adjustment tab.

Adjustment item	Adjustment value
Gamma	-100 (dark) to 100 (bright) ("0" results in no adjustment, $\sqrt{2.0}$ to 0.5) Adjust the density of the half-tone section of the image. Increasing the gamma value brightens the half-tone section. Sync check box ON: Set RGB to same value. OFF: Set RGB to different value.
Brightness	-100 (dark) to 100 (bright) ("0" results in no adjustment) Adjust the brightness of the image. Increasing the brightness value brightens the entire image. Sync check box ON: Set RGB to same value. OFF: Set RGB to different value.
Contrast	-100 (weak) to 100 (strong) ("0" results in no adjustment) Adjust the contrast of the image. Increasing the contrast value increases the difference of brightness and darkness. Sync check box ON: Set RGB to same value. OFF: Set RGB to different value.
Chroma	-100 (weak) to 100 (strong) ("0" results in no adjustment) Adjust the chroma of the image.

2.2.6 Printer information

View the printer information.

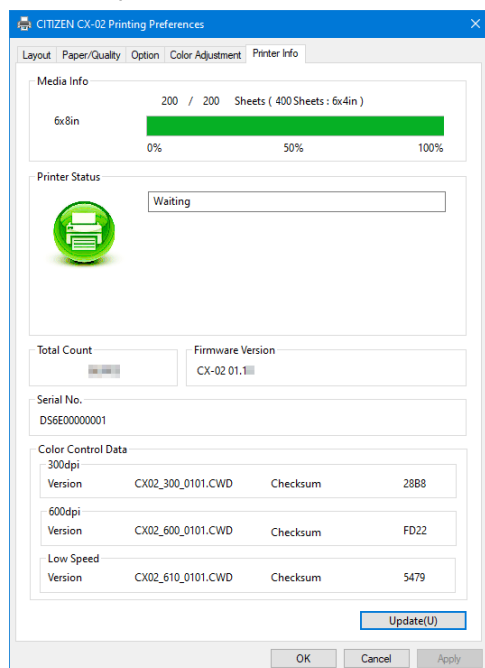


Figure 2.2.6.1 Printer Information tab

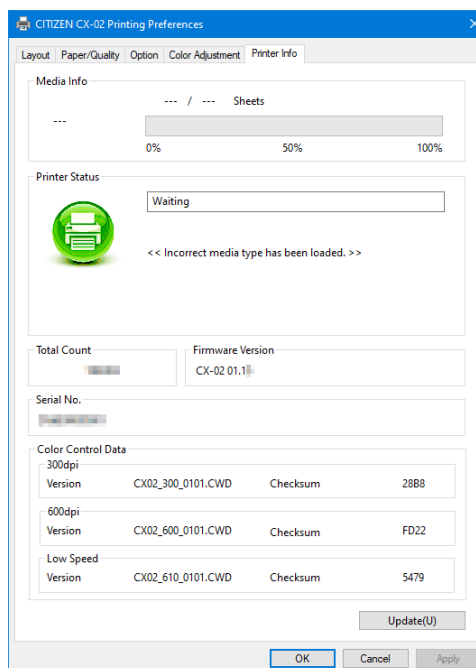













Figure 2.2.6.2 Display when incorrect media is loaded

The following section shows the information displayed in the Printer Info tab.

Display item	Display details		
Media Info	This area shows, for example, the size and remaining number of printable sheets for the ribbon media in the printer. *Media information is not displayed when a media type not supported by the printer has been loaded. (Figure 2.2.6.2)		
Printer Status	Displays the status of the printer using icons and characters.		
	Display icon (Color)	Display characters	Status/Response
	 (Green)	Waiting	Printing is possible.
	 (Blue)	Printing	The printer is printing.
	 (Yellow)	Door open	Front door is open. Close the front door.
	 (Yellow)	Ribbon end	No ribbon remains. Load new media. (Replace the paper and ribbon as a set.)
	 (Yellow)	Paper end	No paper remains. Load new media. (Replace the paper and ribbon as a set.)

Display item	Display details		
Printer Status	Display icon (Color)	Display characters	Status/Response
	 (Gray)	Offline	The printer cannot be recognized. Connect the printer and computer, and then turn on the power.
	 (Purple)	Cooling head	The head is being cooled. Please wait a while. Printing will resume automatically.
	 (Orange)	Ribbon error	The ribbon is not set correctly. Reload the ribbon properly.
	 (Orange)	Paper size setting error	The printer settings and size of the installed ribbon do not match. Check the paper size setting and ribbon size.
	 (Orange)	Paper jam	A paper jam was detected. Remove the paper and reload it properly.
	 (Red)	System error	System error. Restart the printer and computer. If the printer does not recover after the restart, contact the service center.
	*A warning message is displayed when a media type not supported by the printer has been loaded.(Figure 2.2.6.2)		
Total Count	Total count of printed sheets (printing other than 6x4.5, 6x4 or 5x3.5 size will count as two sheets).		
Firmware Version	Version of the control program of the printer. xx.xx indicates the version. •CX-02 xx.xx		
Serial No.	Serial number of the printer.		
Color Control Data	Printer color control data.		

2.3 Default values for settings

The following section shows the default values of the settings (at installation). If the settings have been changed, and the printer driver no longer operates normally, return to the default values shown below.

Note) Depending on the service pack of your operating system or your usage environment, the default values at installation may differ from those in the chart below.

Chart 2.3 Default print settings

Tab	Setting			Value
Layout	Orientation			Portrait
	Page Order			Front to Back
	Pages Per Sheet			1
Paper/Quality	Color			Color
Option	Border			Disable
	Sharpness			0 (Default)
	Color Adjustment			ICM
	Language setting			English
Color Adjustment	Gamma			0
	Brightness			0
	Contrast			0
	Chroma			0
Advanced settings (In the Layout tab, click "Advanced...")	Paper/Output	Paper Size		(6x4)
		Copy Count		1 Copy
	Graphic	Print Quality		High-speed
		Image Color Management	ICM Method	ICM Handled by Host System
			ICM Intent	Pictures
	Document options	Advanced Printing Features		Enabled
		Pages per Sheet Layout		Right then Down
		Printer function	Border	Disable
			Overcoat Finish	Glossy
			Print Re-try	Enable
			2inch cut	Disable

2.4 Color management

Use Color management to specify the color profile. The installer associates "CX2_XXXX.icc" by default.

- Step 1.** From the Printer Properties, select the Color Management tab, and then click "Color Management..."

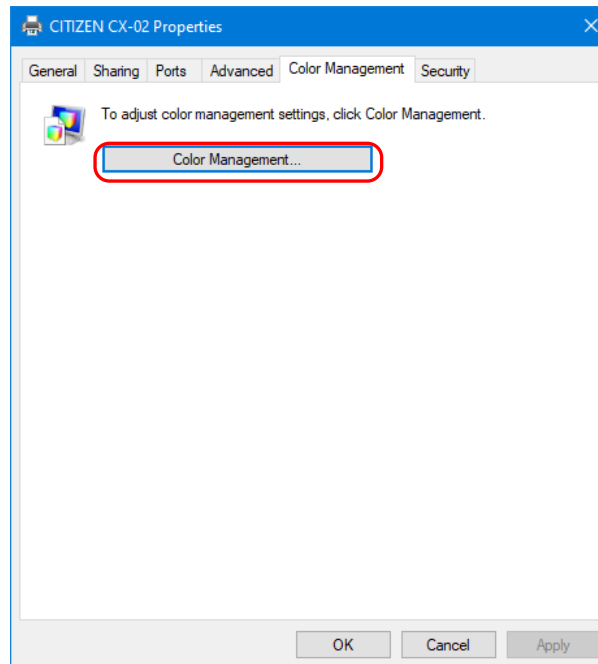


Figure 2.4.1 Color Management

- Step 2.** From Device, select "Printer: CITIZEN CX-02".

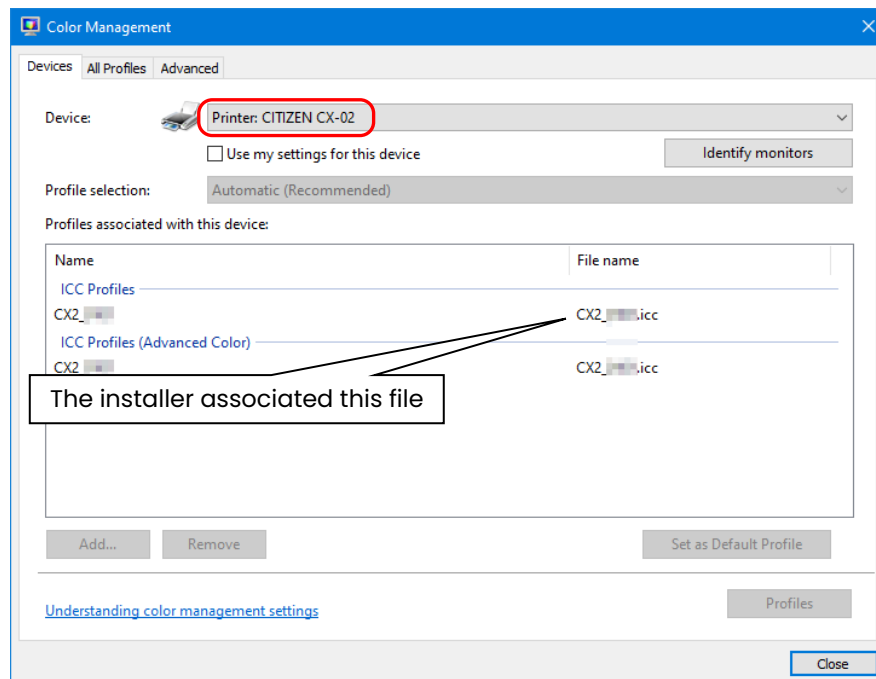


Figure 2.4.2 Color Management Window

2.5 Print Area

The following section shows the image sizes and numbers of dots generated by the paper size setting of the driver.

Paper size	Orientation	Image size (width x height)		Number of image dots (width x height)	
		(inch)	(mm)	High-speed (300x300 dpi)	High-quality (600x600 dpi) ^{*1}
(5x3.5)	Portrait	5" x 3.5"	131.1 x 92.1	1548 x 1088	3096 x 2176
	Landscape	3.5" x 5"	92.1 x 131.1	1088 x 1548	2176 x 3096
(5x5)	Portrait	5" x 5"	131.1 x 130.4	1548 x 1540	3096 x 3080
	Landscape	5" x 5"	130.4 x 131.1	1540 x 1548	3080 x 3096
(5x7)	Portrait	5" x 7"	131.1 x 181.0	1548 x 2138	3096 x 4276
	Landscape	7" x 5"	181.0 x 131.1	2138 x 1548	4276 x 3096
(6x4)	Portrait	6" x 4"	156.1 x 105.0	1844 x 1240	3688 x 2480
	Landscape	4" x 6"	105.0 x 156.1	1240 x 1844	2480 x 3688
(6x4.5)	Portrait	6" x 4.5"	156.1 x 117.3	1844 x 1386	3688 x 2772
	Landscape	4.5" x 6"	117.3 x 156.1	1386 x 1844	2772 x 3688
(6x6)	Portrait	6" x 6"	156.1 x 155.4	1844 x 1836	3688 x 3672
	Landscape	6" x 6"	155.4 x 156.1	1836 x 1844	3672 x 3688
(6x8)	Portrait	6" x 8"	156.1 x 206.2	1844 x 2436	3688 x 4872
	Landscape	8" x 6"	206.2 x 156.1	2436 x 1844	4872 x 3688
(6x9)	Portrait	6" x 9"	156.1 x 232.0	1844 x 2740	3688 x 5480
	Landscape	9" x 6"	232.0 x 156.1	2740 x 1844	5480 x 3688
PR (3.5x5)	Portrait	3.5" x 5"	92.1 x 131.1	1088 x 1548	2176 x 3096
	Landscape	5" x 3.5"	131.1 x 92.1	1548 x 1088	3096 x 2176
PR (4x6)	Portrait	4" x 6"	105.0 x 156.1	1240 x 1844	2480 x 3688
	Landscape	6" x 4"	156.1 x 105.0	1844 x 1240	3688 x 2480
PR (4.5x6)	Portrait	4.5" x 6"	117.3 x 156.1	1386 x 1844	2772 x 3688
	Landscape	6" x 4.5"	156.1 x 117.3	1844 x 1386	3688 x 2772

*1: Convert to 300 x 600 dpi size within the driver, and then send to the printer.

2.6 Orientation

The following chart shows the relationship of images generated by an application and printed items (output direction) according to the orientation setting.

Hint: The PR print size (center column) is prepared for applications that are not able to change from landscape to portrait and back using the orientation setting on the layout tab. Normally it is recommended to use the non-PR print sizes and use the orientation settings for landscape and portrait on the layout tab.

Original image	Orientation	Driver setting					
		Paper setting					
		(5x3.5) (5x5) (6x4) (6x4.5) (6x6)		PR (3.5x5) PR (4x6) PR (4.5x6)		(5x7) (6x8) (6x9)	
		Generated image	Printed item (Output orientation ↓)	Generated image	Printed item (Output orientation ↓)	Generated image	Printed item (Output orientation ↓)
	Portrait						
	Landscape						
	Portrait						
	Landscape						

Chapter 3 Update the driver

As when performing the installation, log in as an administrator before carrying out this operation.

1. Check the job

Before deleting the printer driver, close all applications. Furthermore, click on the icon of the printer to be deleted in the Devices and Printers screen. At the bottom area of the screen, confirm that there are no documents in the queue, and then start deletion of the driver.

Note: In Windows 8 and 10, when the printer is offline (the printer is not on and connected), the "CITIZEN CX-02" icon is not displayed.

Always connect the printer with the power turned on and check that there are no documents in the queue.

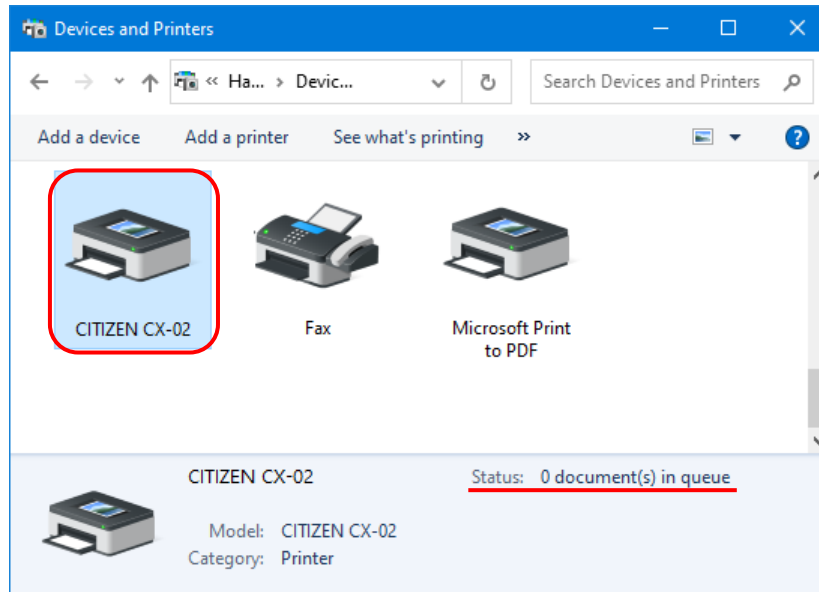


Figure 3.1 Clicking the "CITIZEN CX-02" icon at the Devices and Printers screen

2. Uninstall the driver package

- 1) Click "Start", and then click "Windows System" -> "Control Panel". In the Control Panel, click "Uninstall a program".
 In Windows 7, click "Start", and then click "Control Panel". In the Control Panel, click "Uninstall a program".
 In Windows 8, right click the "Start" screen. In the bottom right area, select "All Apps", and then select "Control Panel". In the Control Panel, click "Uninstall a program".

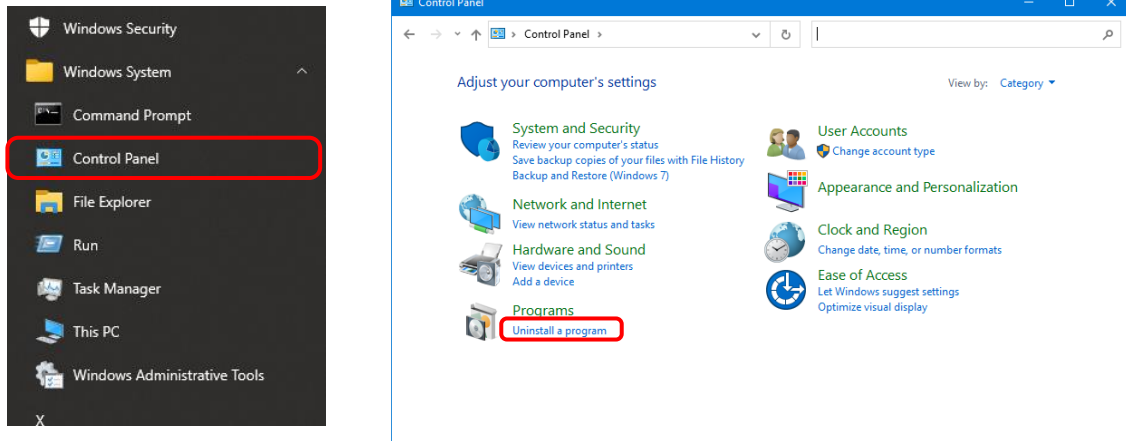


Figure 3.2 Control Panel

- 2) The Uninstall or change a program screen appears. In the list, double click "CITIZEN CX-02".

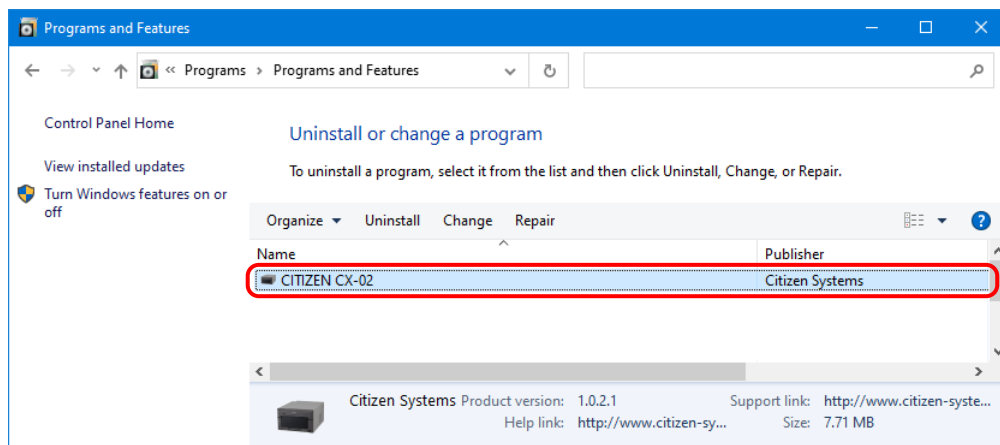


Figure 3.3 Uninstall a program

- 3) Click "Yes" when the CITIZEN CX-02 uninstall confirmation windows appears.
 Uninstalling the driver is complete.
 After uninstalling the printer package, restart the computer.

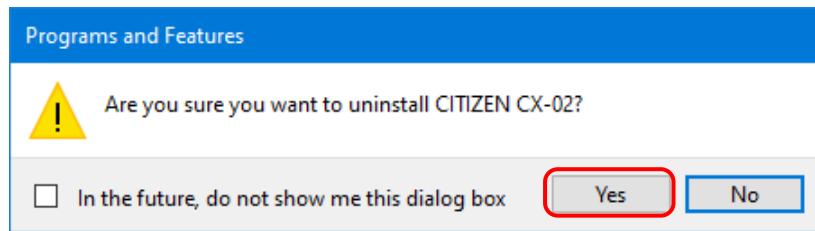


Figure 3.4 Uninstallation confirmation

When a User Account Control dialog box appears, click "Yes".

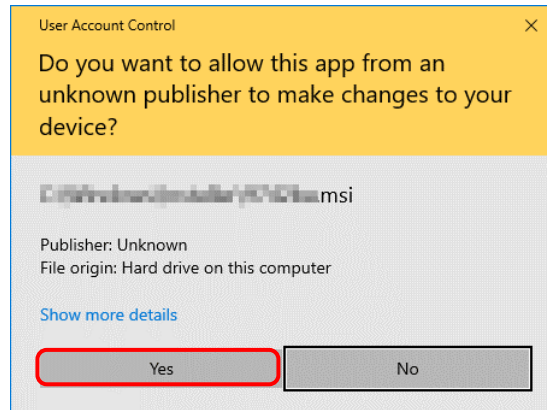


Figure 3.5 User Account Control

3. Install an upgrade for the printer driver

After deleting the printer and the printer driver, install the new printer driver. For the installation procedure, see "Chapter 1 Installation".

4. Restart the computer

After the installation of the printer driver is complete, always restart the computer.
 (Do not print just after installation. Always restart the computer once.)

Chapter 4 Delete the driver

4.1 Automatic deletion of printer drivers

The printer driver is automatically deleted when uninstalling the driver package.

For the steps to uninstall the driver package, see "2. Uninstall the driver package" in Chapter 3.

Note that uninstalling the driver package when the printer driver is in use will display the following message, and the printer driver will not be deleted.

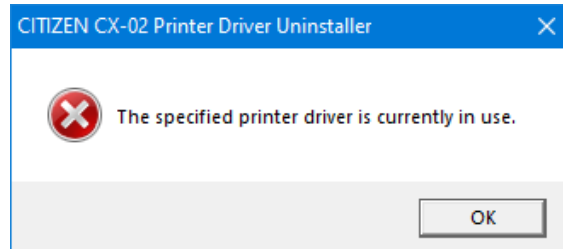


Figure 4.1 Message displayed when the driver is in use

When the above message is displayed, restart the computer and then delete the printer driver using the procedure described in "4.2 Manual deletion of printer drivers".

4.2 Manual deletion of printer drivers

- 1) Click "Start", and then click "Windows System" -> "Control Panel". In the Control Panel, click "View devices and printers".
 In Windows 7, Click "Start", and then click "Control Panel". In the Control Panel, click "View devices and printers".
 In Windows 8, right click the "Start" screen. In the bottom right area, select "All Apps", and then select "Control Panel". In the Control Panel, click "Devices and Printers".
 From the Devices and Printers screen, right click "CITIZEN CX-02". From the menu, click "Remove device".

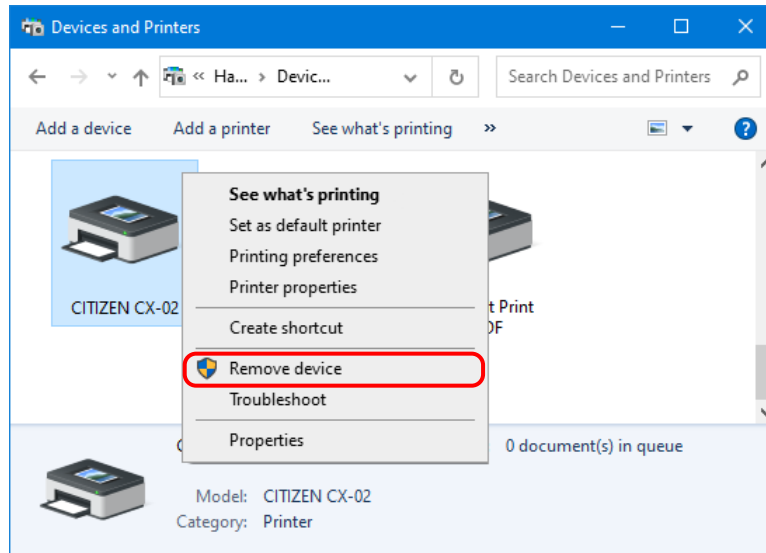


Figure 4.2.1 Right clicking "CITIZEN CX-02" in the Devices and Printers screen

In Windows 8 and 10, when the printer is offline (the printer is not on and connected), "CITIZEN CX-02" icon is not displayed. In such cases, use the following procedure to delete the device.

- (i) On an empty area in the Devices and Printers screen, right click, and then select "Device Manager".

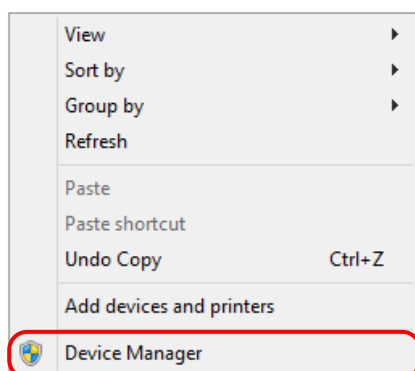


Figure 4.2.2.i Right clicking on an empty area in the Devices and Printers screen

- (ii) Click "View", and then select "Show hidden devices".

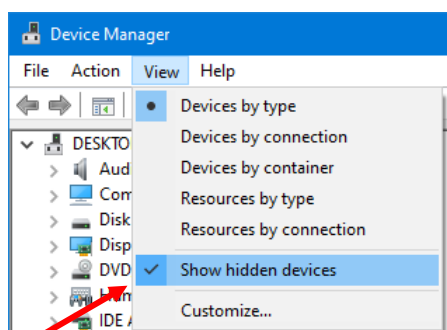


Figure 4.2.2.ii Displaying the View menu for hidden devices

- (iii) Under "Printers", right click "CITIZEN CX-02", and then select "Uninstall device".

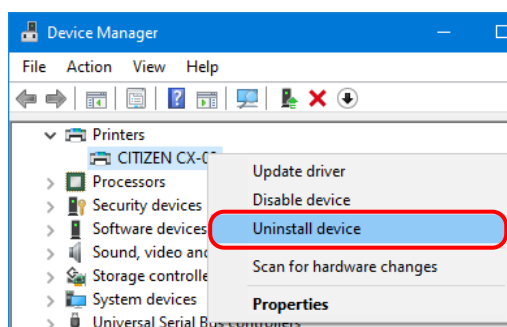


Figure 4.2.2.iii Displaying the menu to delete CITIZEN CX-02

- (iv) At the Uninstall Device screen, click "Uninstall".

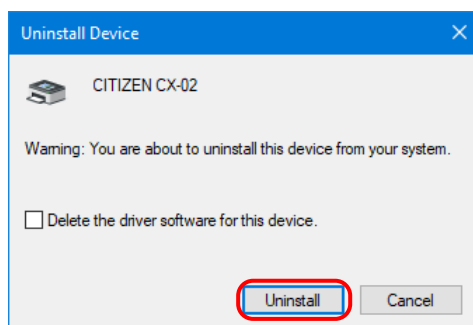


Figure 4.2.2.iv Uninstall Device screen

- 2) The printer deletion confirmation dialog box appears. Click "Yes".

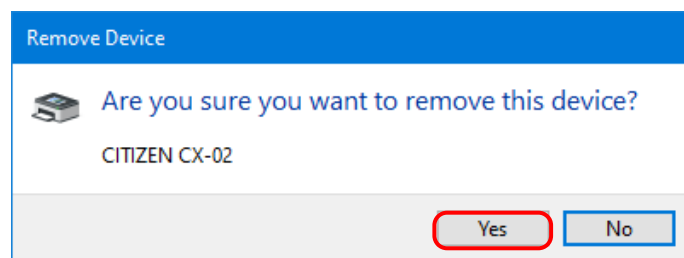


Figure 4.2.3 Printer deletion confirmation dialog box

- 3) After deleting "CITIZEN CX-02", select another printer (for example, Fax), and then click "Print Server Properties" in the menu bar.

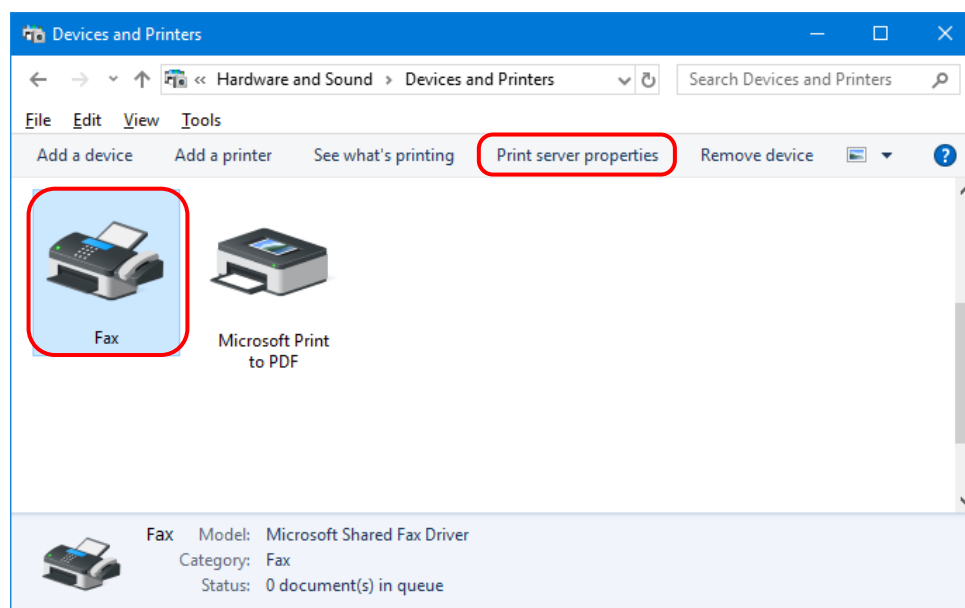


Figure 4.2.4 Displaying the Print Server Properties menu in the Devices and Printers screen

- 4) The Print Server Properties dialog box appears. Click the "Drivers" tab. From the installed printer driver list, select "CITIZEN CX-02", and then click "Remove...".

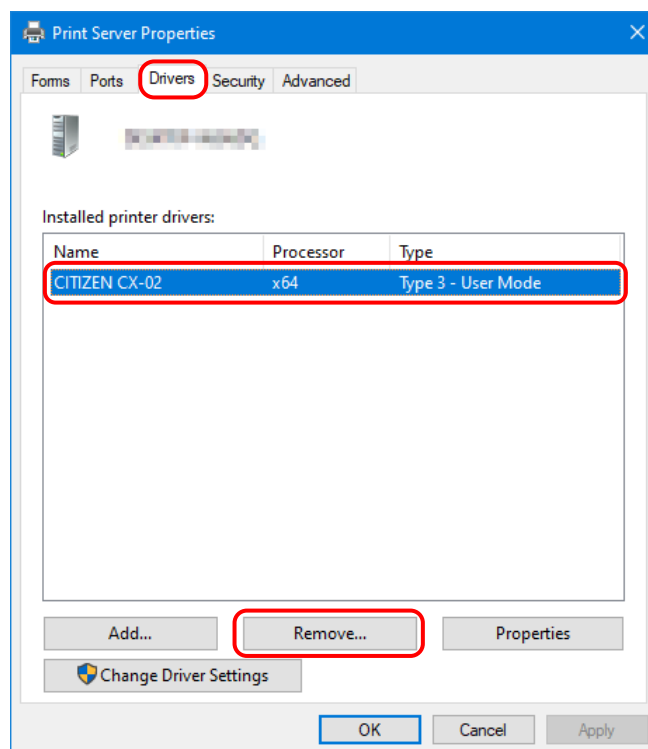


Figure 4.2.5 Printer Server Properties dialog box

- 5) The Remove Driver and Package dialog box appears. Select "Remove driver only", and then click "OK".

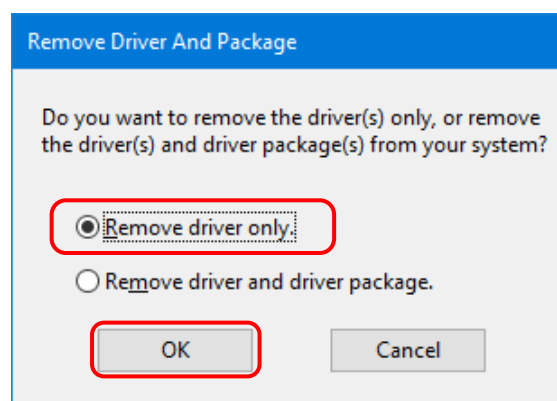


Figure 4.2.6 Remove Driver And Package dialog box

- 6) The Print Server Properties confirmation dialog box appears. Click "Yes".

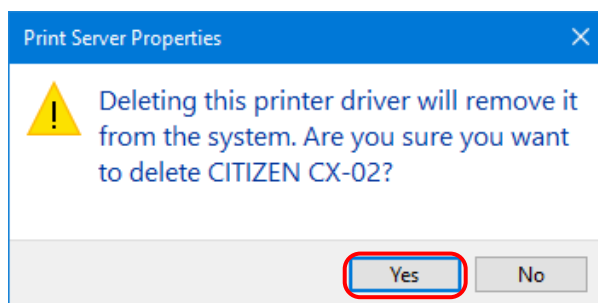


Figure 4.2.7 Driver deletion confirmation dialog box

If the following message appears, the operating system may be using the driver (Print Spooler service) in the background. Disconnect the USB cable and then restart your computer and try deleting the printer driver again.

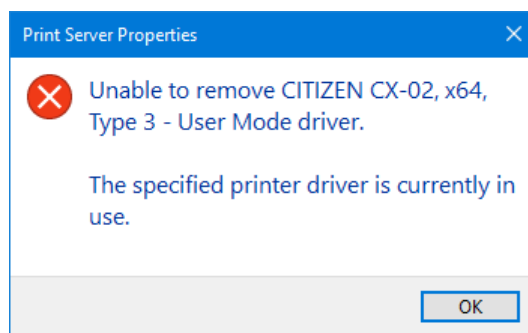


Figure 4.2.7.i Driver in use

- 7) In the Print Server Properties dialog box, confirm that "CITIZEN CX-02" was deleted, and then click "Close".

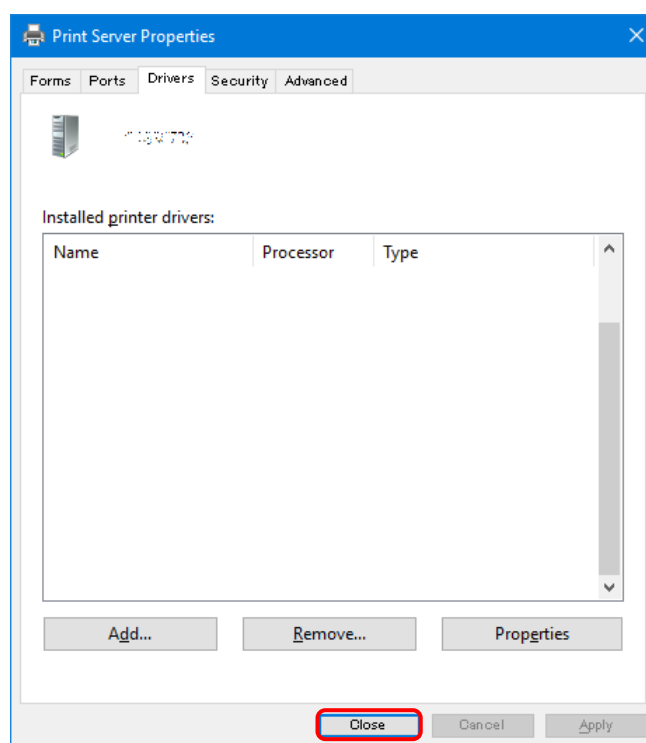


Figure 4.2.8 Print Server Properties

CITIZEN SYSTEMS JAPAN CO., LTD.